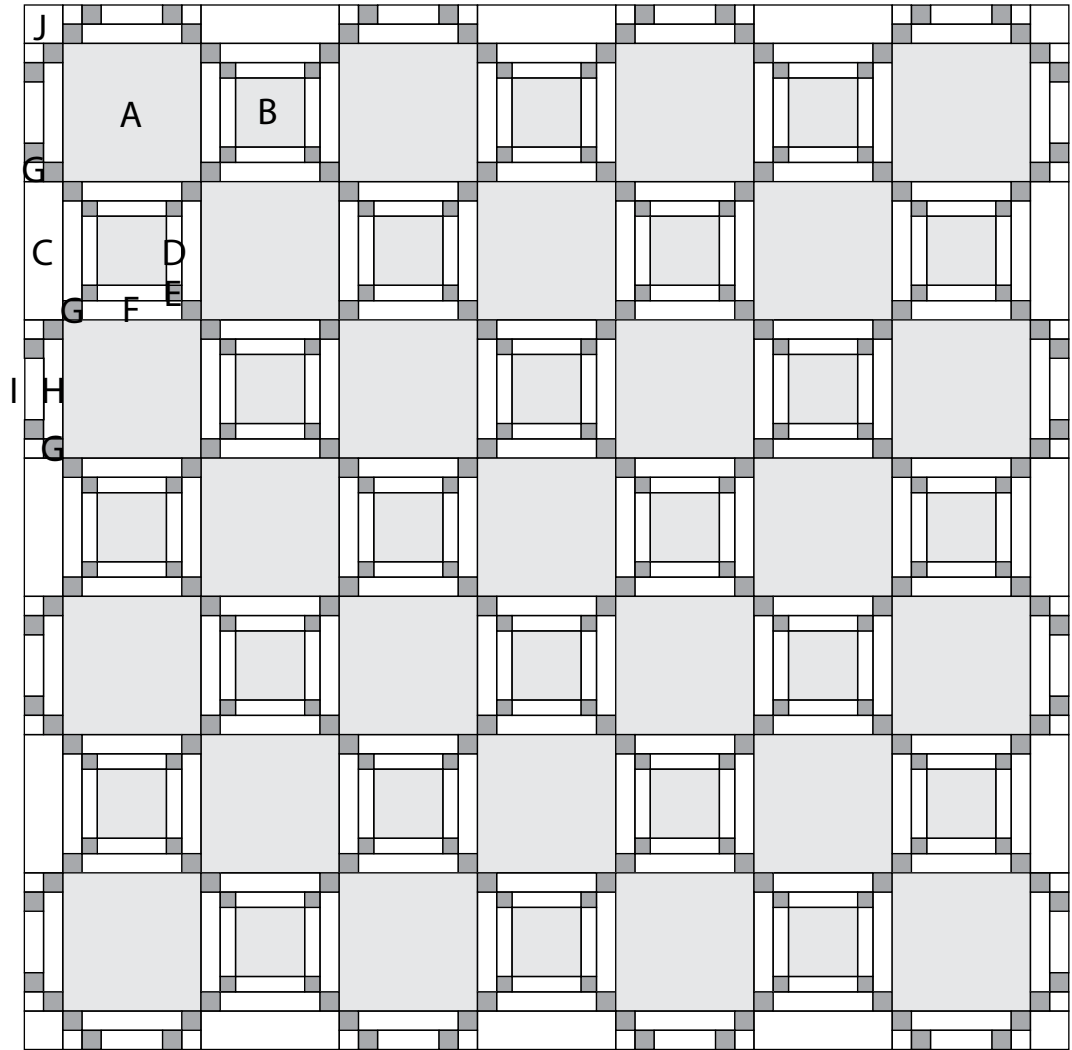


BH4 Setting Layout 3

Finished Size - 68" x 68".



This layout uses (25) 9" x 9" blocks and (24) 4½" x 4½" blocks.

Yardage Requirements:

- Background for Alternating Blocks & Border: 2⅜ yards
- Accent for Alternating Blocks & Border: ¾ yard or 6 fat quarters or 8 fat eighths or scraps to total ¾ yard
- This does not include the yardage for the blocks.

Size of pieces:

- A - Large Block: 9" x 9" block / 9½" x 9½" unfinished.
- B - Small Block: 4½" x 4½" / 5" x 5" unfinished.
- C - Outer Border Rectangle: 2½" x 9" / 3" x 9½" unfinished.
- D - Small Block Row 1: 1" x 4½" / 1½" x 5" unfinished.
- E - Small Block Corner Square 1: 1" x 1" / 1½" x 1½" unfinished.
- F - Small Block Row 2: 1¼" x 6½" / 1¾" x 7" unfinished.
- G - Small Block Corner Square 2 & Border Squares: 1¼" x 1¼" / 1¾" x 1¾" unfinished
- H - Pieced Border Rectangle - Inside Strip: 1¼" x 6½" / 1¾" x 7" unfinished.
- I - Pieced Border Rectangle - Inside Strip: 1¼" x 4½" / 1¾" x 5" unfinished.
- J - Outer Border Corner Square - 2½" x 2½" / 3" x 3" unfinished.

Join the Moda
Block Heads
Facebook group
for more info
and updates!

BLOCK HEADS 4

Cutting Requirements:

Background for Alternating Blocks & Border.

- Cut 1 strip - 9½" x 42" wof. From the strip, cut 12 rectangles - 3" x 9½".
 - From the remainder, cut 4 squares - 3" x 3".
- Cut 4 strips - 5" x 42" wof.
 - From 2 strips, cut a total of (48) strips - 1½" x 5".
 - Cut the two remaining strips in half to make (4) strips - 5" x 21" wof. Set these strips aside for now.
- Cut 5 strips - 7" x 42" wof.
 - From 2 strips, cut a total of (48) strips - 1¾" x 7".
 - Cut the three remaining strips in half to make (6) strips - 7" x 21" wof. Set these strips aside for now.
- Cut 2 strips - 4½" x 42" wof. Cut the strips in half to yield (4) strips - 4½" x 21".
- Cut 2 strips - 1¾" x 42" wof. Cut the strips in half to yield (4) strips - 1¾" x 21".

Accent for Alternating Blocks & Border - 1 fabric or from assorted fabrics:

- Cut 8 strips - 1½" x 21" wof.
- Cut 16 strips - 1¾" x 21" wof.

All seams are a scant ¼" unless specified otherwise.

Assembly

1. **Row 1 - Alternating Block.** Select (2) accent strips - 1½" x 21" and (1) background strip - 5" x 21".

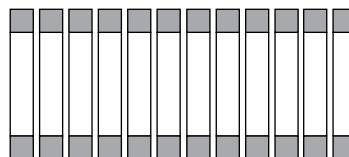
Join the strips as shown. Press the seams to the background strip - away from the accent strip.

The strip set will measure 7" x 21" wof.

Repeat to make a total of (4) strips.



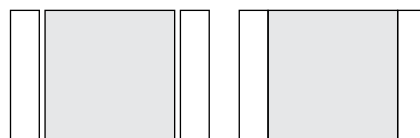
2. Cross-cut the strips into 1½" segments.
Cut a total of (48) segments - 1½" x 7".



3. Select (1) 4½" block - measures 5" - and (2) strips - 1½" x 5".

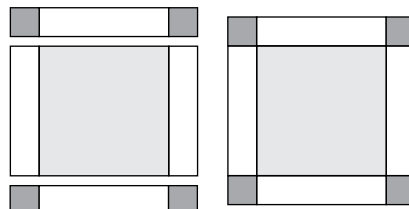
Join the strips to the sides of the block as shown.

Press the seams to the strips - away from the block.



4. Select (2) strips pieced in Steps 1 and 2, and attach them to the top and bottom edges of the block as shown.

Press the seams to the strips - away from the block.



Join the Moda Block Heads Facebook group for more info and updates!

MODA BLOCK HEADS 4

Join the Moda Block Heads Facebook group for more info and updates!

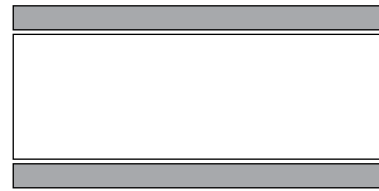
Assembly cont.

- 5. **Row 2 - Alternating Block.** Select (2) accent strips - $1\frac{3}{4}'' \times 21''$ and (1) background strip - $7'' \times 21''$.

Join the strips as shown. Press the seams to the background strip - away from the accent strip.

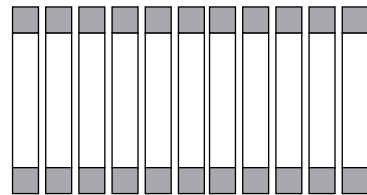
The strip set will measure $9\frac{1}{2}'' \times 21''$ wof.

Repeat to make a total of (6) strips.



- 6. **Cross-cut the strips into $1\frac{3}{4}''$ segments - $1\frac{3}{4}''$.**

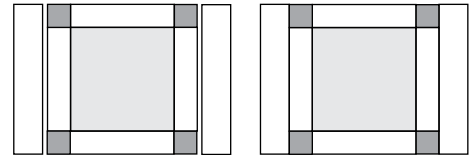
Cut a total of (64) segments - $1\frac{3}{4}'' \times 9\frac{1}{2}''$.



- 7. **Select (2) strips - $1\frac{3}{4}'' \times 7''$.**

Join the strips to the sides of the block as shown.

Press the seams to the strips - away from the block.



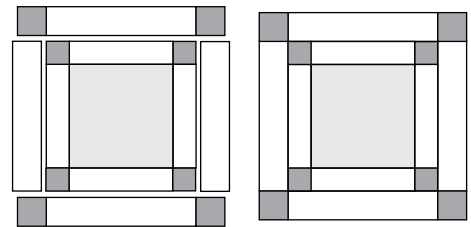
- 8. **Select (2) strips pieced in Steps 5 and 6, and attach them to the top and bottom edges of the block as shown.**

Press the seams to the strips - away from the block.

The block will measure $9\frac{1}{2}'' \times 9\frac{1}{2}''$.

Repeat to make a total of 24 blocks.

The (16) remaining segments will be used for the Pieced Border Blocks.

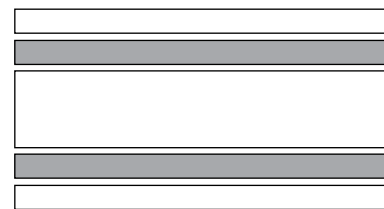


- 9. **Pieced Border Blocks.** Select (2) accent strips - $1\frac{3}{4}'' \times 21''$, (2) background strips - $1\frac{3}{4}'' \times 21''$, and (1) background strip - $4\frac{1}{2}'' \times 21''$.

Join the strips as shown. Press the seams to the background strip - away from the accent strip.

The strip set will measure $9\frac{1}{2}'' \times 21''$ wof.

Repeat to make (2) strips.

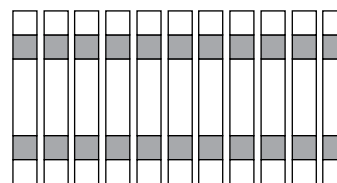


B
L
O
C
K
H
E
A
D
S
4

Assembly cont.

10. Cross-cut the strips into 1 3/4" segments - 1 3/4".

Cut a total of (16) segments - 1 3/4" x 9 1/2".

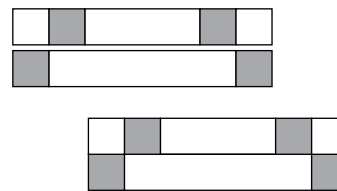


11. Using (1) strip from Step 6 and (1) strip from Step 10, join the two strips as shown.

Press the seam in one direction - or press it open.

The unit will measure 3" x 9 1/2".

Repeat to make (16) pieced border blocks.



Assembling the Quilt Top

1. Lay out the blocks, alternating blocks, pieced border blocks, border rectangles, and border corner squares as shown on the next page.
2. Join the parts in each horizontal row - including the border blocks/rectangles. Press the seams to the border blocks/rectangles and alternating blocks - or press them open.
3. Join the rows to complete the quilt top. Press the seams in one direction - or press them open.

The quilt top will measure 68" x 68".

Note: When there is a pieced edge to the quilt top, we recommend stay-stitching the outer edge of the quilt top approx. 1/8" from the edge. This stabilizes the edge during machine quilting, and prevents any seams from separating.

Quilt and bind as desired.

For a bigger quilt... Here are a few options:

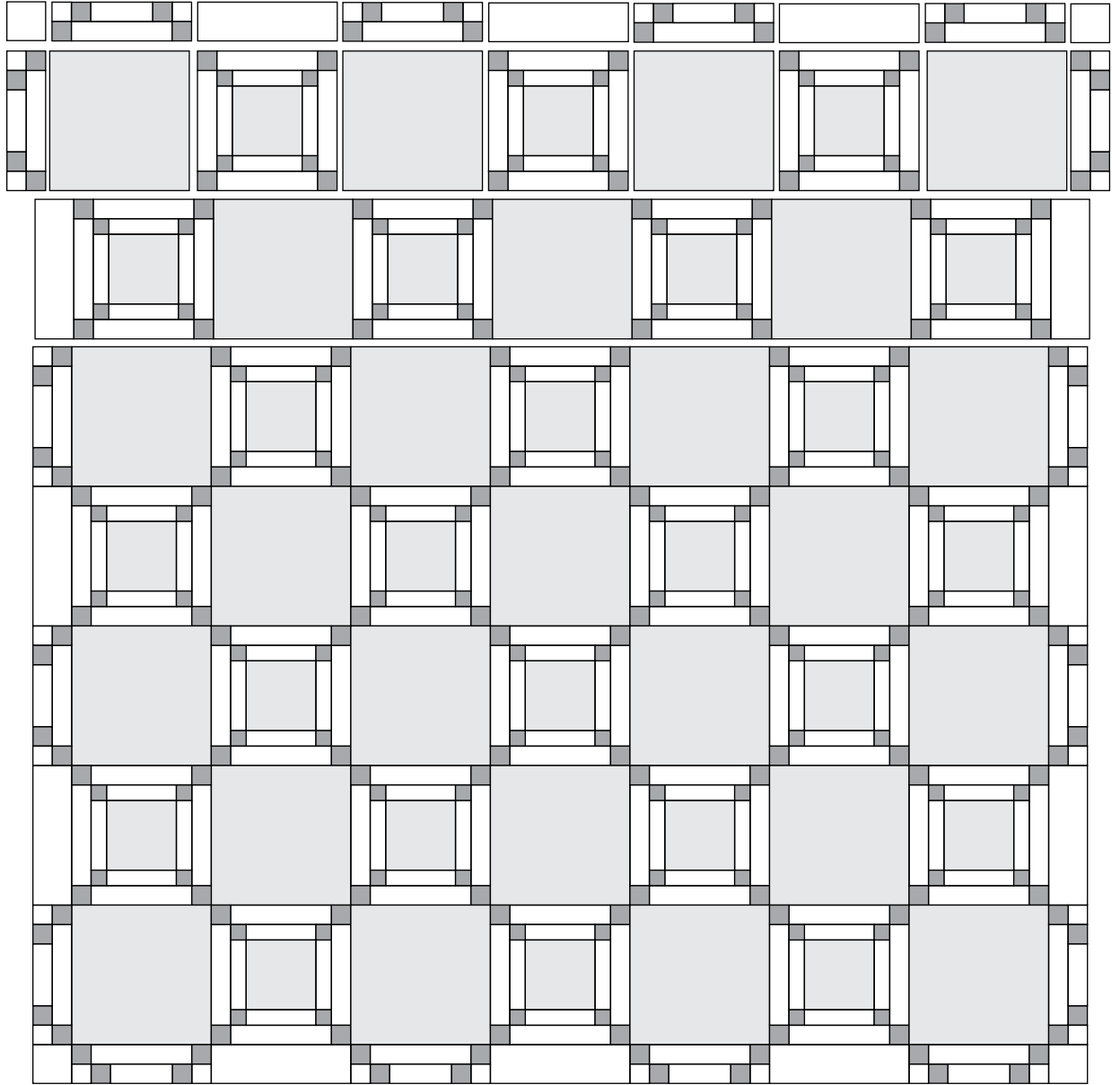
- 68" x 86" - Nine rows of seven blocks each.
 - Make (32) 9" x 9" blocks and (32) 4 1/2" x 4 1/2" blocks.
 - Use the small blocks to make (32) alternating blocks, and make 18 pieced border blocks.
 - Cut (14) background border rectangles.
- 86" x 86" - Nine rows of nine blocks each.
 - Make (41) 9" x 9" blocks and (40) 4 1/2" x 4 1/2" blocks.
 - Use the small blocks to make (40) alternating blocks, and make 20 pieced border blocks.
 - Cut (16) background border rectangles.

Join the Moda Block Heads Facebook group for more info and updates!



Final Layout

BLOCK HEADS 4



Join the Moda Block Heads Facebook group for more info and updates!

