

TIMELESS
TREASURES

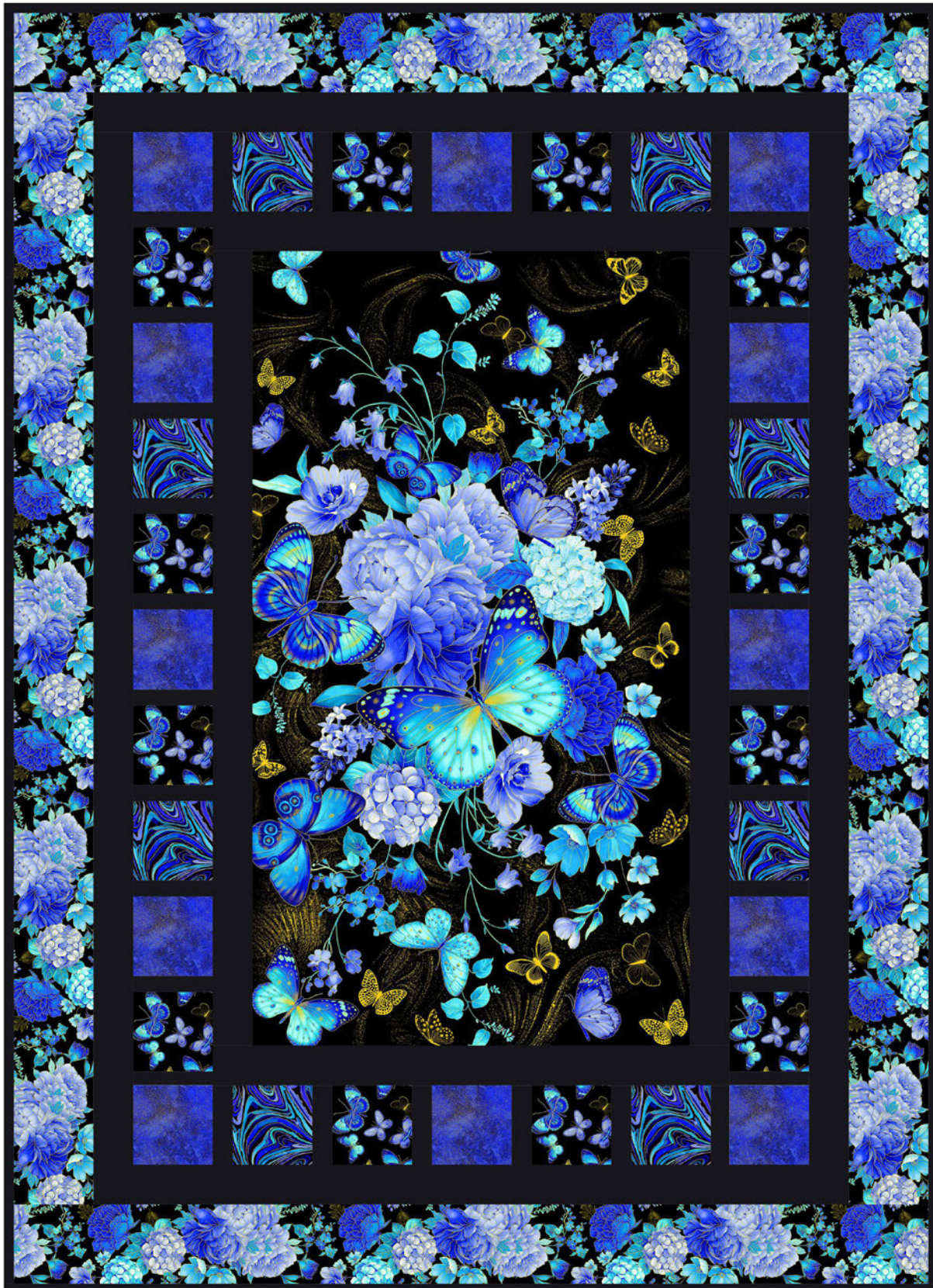
BROOME STREET PATTERNS



ESCAPADE

Bento

Designed by Laureen Smith



Finished quilt size: 46½" x 64½"

Fabric Requirements

1 panel ($\frac{2}{3}$ yard) Panel-CM3790 Black
 $1\frac{1}{3}$ yards Soho-Black (includes $\frac{1}{2}$ yard for binding)
 $\frac{1}{3}$ yard Shimmer Royal
 $\frac{1}{3}$ yard Escapade-CM3796 Black
 $\frac{1}{4}$ yard Escapade-CM3799 Indigo
 $\frac{3}{4}$ yard Escapade-CM3793 Black
 $3\frac{1}{4}$ yards backing fabric your choice
55" \times 73" batting

Cutting

From Panel-CM3790 Black:

- Trim panel to $22\frac{1}{2}" \times 40\frac{1}{2}"$

From Soho-Black:

- Cut eight $2\frac{1}{2}" \times$ width-of-fabric (WOF) strips. Sub-cut two $2\frac{1}{2}" \times 40\frac{1}{2}"$ strips, two $2\frac{1}{2}" \times 26\frac{1}{2}"$ strips, two $2\frac{1}{2}" \times 52\frac{1}{2}"$ strips and two $2\frac{1}{2}" \times 38\frac{1}{2}"$ strips.
- Cut two $4\frac{1}{2}" \times$ WOF strips. Sub-cut sixteen $1\frac{1}{4}" \times 4\frac{1}{2}"$ strips and sixteen $1\frac{1}{2}" \times 4\frac{1}{2}"$ strips.
- Cut six $2\frac{1}{2}" \times$ WOF binding strips.

From both Shimmer Royal and Escapade-CM3796 Black:

- Cut two $4\frac{1}{2}" \times$ WOF strips. Sub-cut twelve $4\frac{1}{2}"$ squares.

From Escapade-CM3799 Indigo:

- Cut one $4\frac{1}{2}" \times$ WOF strip. Sub-cut eight $4\frac{1}{2}"$ squares.

From Escapade-CM3793 Black:

- Cut five $4\frac{1}{2}" \times$ WOF strips. Sew the strips together end to end. Sub-cut two $4\frac{1}{2}" \times 56\frac{1}{2}"$ strips and two $4\frac{1}{2}" \times 46\frac{1}{2}"$ strips.

Quilt Top Assembly

All seam allowances are $\frac{1}{4}"$ and pieces are sewn right sides together.

1. Sew a $2\frac{1}{2}" \times 40\frac{1}{2}"$ Soho-Black strip to each side of the CM3790 Black panel. Sew a $2\frac{1}{2}" \times 26\frac{1}{2}"$ Soho-Black strip to the top and another to the bottom the CM3790 Black panel.

2. Following the quilt photo for fabric placement, alternately sew together eight $1\frac{1}{4}" \times 4\frac{1}{2}"$ Soho-Black strips and nine $4\frac{1}{2}"$ squares. Then, sew a $1\frac{1}{2}" \times 4\frac{1}{2}"$ Soho-Black strip to each end. Make two side borders, each measuring $4\frac{1}{2}" \times 44\frac{1}{2}"$. Sew a side border to each long edge of the quilt top.
3. Following the quilt photo for fabric placement, alternately sew together six $1\frac{1}{2}" \times 4\frac{1}{2}"$ Soho-Black strips and seven $4\frac{1}{2}"$ squares. Make two top/bottom borders, each measuring $4\frac{1}{2}" \times 34\frac{1}{2}"$. Sew one border to the top and the other to the bottom of the quilt top.
4. Sew a $2\frac{1}{2}" \times 52\frac{1}{2}"$ Soho-Black strip to each long edge of the quilt top. Sew a $2\frac{1}{2}" \times 38\frac{1}{2}"$ Soho-Black strip to the top and another to the bottom.
5. Sew a $4\frac{1}{2}" \times 56\frac{1}{2}"$ CM3793 Black strip to each side of the quilt top. Sew a $4\frac{1}{2}" \times 46\frac{1}{2}"$ CM3793 Black strip to the top and the other to the bottom.

Finishing

6. Layer the quilt top, batting, and backing, and quilt as desired.
7. Stitch the binding strips together end to end using diagonal seams. Fold and press the resulting long strip in half lengthwise with wrong sides together. Stitch to the quilt front, matching raw edges and mitering the corners.
8. Fold the binding to the quilt underside and hand-stitch the folded edge to the quilt back.

Laureen Smith

www.tourmalinethymequilts.com

@tandtquilts (Facebook), ttquilts (Instagram)

©2025 Timeless Treasures www.ttfabrics.com

This pattern is for individual home use only. This pattern may not be reproduced for commercial purposes (i.e., may not be sold).



Imagination... Passion... Creativity