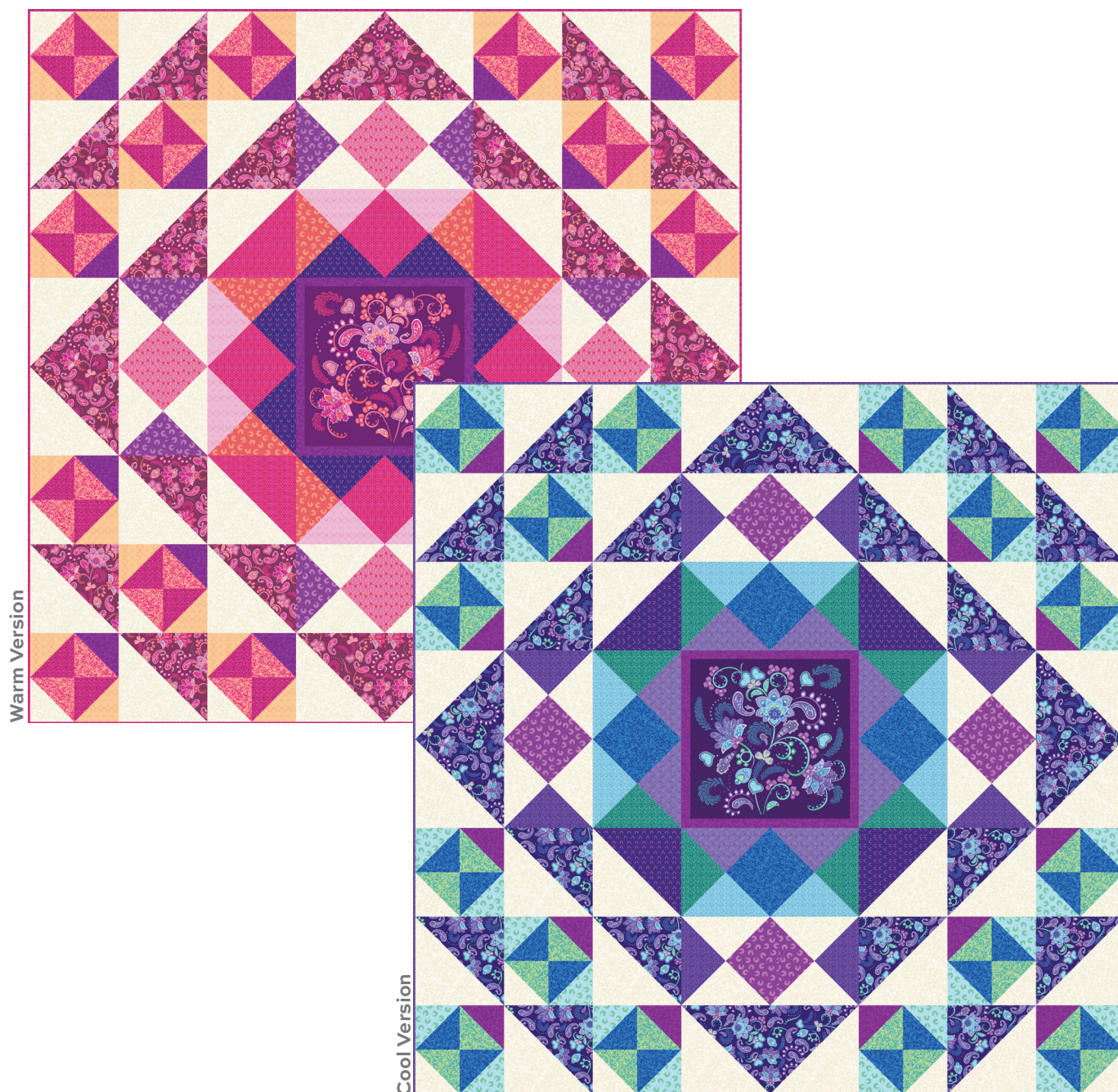


Molly's Magic & Fantasy Garden

Sarah Maxwell



Midnight Magic Quilt designed by: **Sarah Maxwell**

Quilt Size: **80" x 80"** • Skill Level: **Confident Beginner**

andover • makower uk

Free Pattern Download Available

1384 Broadway New York, NY 10018

Tel. (800) 223-5678 • andoverfabrics.com

Midnight Magic

Featuring Andover Fabrics new Collections: Molly's Magic & Fantasy Garden

Quilt designed by Sarah Maxwell



Quilt finished 80" x 80"

Cool Quilt Cutting Directions

Note: Read assembly directions before cutting patches. Borders are cut to exact length required plus 1/4" seam allowance. WOF designates the width of fabric from selvedge to selvedge (approximately 42" wide).

Fabric A Cut (4) 10 7/8" x WOF strips. Sub-cut the strips into (12) 10 7/8" squares.

Fabric B Cut (1) 11 1/4" x WOF strip. Sub-cut the strip into (2) 11 1/4" squares. Cut each square across both diagonals to make (8) 11 1/4" triangles.

Fabric C Cut (3) 5 7/8" x WOF strips. Sub-cut the strips into (16) 5 7/8" squares.

Fabric D Cut (1) 11 1/4" x WOF strip. Sub-cut the strip into (2) 11 1/4" squares. Cut each square across both diagonals to make (8) 11 1/4" triangles.

Fabric E Cut (1) 10 7/8" x WOF strip. Sub-cut the strip into (2) 10 7/8" squares.

Fabric F Cut (1) 11 1/4" x WOF strip. Sub-cut the strip into (2) 11 1/4" squares. Cut each square across both diagonals to make (8) 11 1/4" triangles.

Fabric G Cut (1) 11 1/4" x WOF strip. Sub-cut the strip into (2) 11 1/4" squares. Cut each square across both diagonals to make (8) 11 1/4" triangles.

Fabric H Cut (1) 11 1/4" x WOF strip. Sub-cut the strip into (2) 11 1/4" squares. Cut each square across both diagonals to make (8) 11 1/4" triangles.

Fabric Requirements (Cool Version)

Quilt		Yardage	Fabric
Fabric A	blocks	1 3/8 yards	1500-B
Fabric B	blocks	3/8 yard	1501-P
Fabric C	blocks	5/8 yard	1502-B
Fabric D	blocks	3/8 yard	1502-P
Fabric E	blocks	3/8 yard	1503-P
Fabric F	blocks	3/8 yard	1504-B
Fabric G	blocks	3/8 yard	1504-G
Fabric H	blocks	3/8 yard	1504-P
Fabric I	blocks	7/8 yard	1505-B
Fabric J	blocks	5/8 yard	1505-G
Fabric K	blocks	1/2 yard	1505-P
Fabric L	blocks	2 1/4 yards	1505-L
Fabric M	blocks	1 panel	1553-X*
Binding		3/4 yard	1504-P
Backing		7 1/2 yards	1501-P

* Fantasy Garden Collection

Fabric Requirements (Warm Version)

Quilt		Yardage	Fabric
Fabric A	blocks	1 3/8 yards	1500-E
Fabric B	blocks	3/8 yard	1501-E
Fabric C	blocks	5/8 yard	1503-O
Fabric D	blocks	3/8 yard	1502-O
Fabric E	blocks	3/8 yard	1502-P
Fabric F	blocks	3/4 yard	1503-E
Fabric G	blocks	3/8 yard	1503-LE
Fabric H	blocks	3/8 yard	1503-P
Fabric I	blocks	5/8 yard	1504-E
Fabric J	blocks	5/8 yard	1505-E
Fabric K	blocks	1/2 yard	1505-P
Fabric L	blocks	2 1/4 yards	1505-L
Fabric M	blocks	1 panel	1553-X*
Binding		3/4 yard	1504-E
Backing		7 1/2 yards	1501-E

* Fantasy Garden Collection

Fabric I Cut (1) 11 1/4" x WOF strip. Sub-cut the strip into (2) 11 1/4" squares. Cut each square across both diagonals to make (8) 11 1/4" triangles.
From the remaining fabric cut (16) 5 7/8" squares.

Midnight Magic

Cool Quilt Cutting Directions - Continued

Fabric J	Cut (3) 5 $\frac{7}{8}$ " x WOF strips. Sub-cut the strips into (16) 5 $\frac{7}{8}$ " squares.
Fabric K	Cut (2) 5 $\frac{7}{8}$ " x WOF strips. Sub-cut the strips into (8) 5 $\frac{7}{8}$ " squares.
Fabric L	Cut (2) 11 $\frac{1}{4}$ " x WOF strips. Sub-cut the strips into (4) 11 $\frac{1}{4}$ " squares. Cut each square across both diagonals to make (16) 11 $\frac{1}{4}$ " triangles. Cut (5) 10 $\frac{7}{8}$ " x WOF strips. Sub-cut the strips into (14) 10 $\frac{7}{8}$ " squares. From the remaining fabric cut (8) 5 $\frac{7}{8}$ " squares.
Fabric M	Fussy cut (1) 20 $\frac{1}{2}$ " square centered on the purple/blue block.
Binding	Cut (9) 2 $\frac{1}{2}$ " x WOF strips for the binding.
Backing	Cut (3) 88" x WOF strips. Sew the strips together and trim to make (1) 88" x 88" backing.

Warm Quilt Cutting Directions

Note: Read assembly directions before cutting patches. Borders are cut to exact length required plus $\frac{1}{4}$ " seam allowance. WOF designates the width of fabric from selvedge to selvedge (approximately 42" wide).

Fabric A	Cut (4) 10 $\frac{7}{8}$ " x WOF strips. Sub-cut the strips into (12) 10 $\frac{7}{8}$ " squares.
Fabric B	Cut (1) 11 $\frac{1}{4}$ " x WOF strip. Sub-cut the strip into (2) 11 $\frac{1}{4}$ " squares. Cut each square across both diagonals to make (8) 11 $\frac{1}{4}$ " triangles.
Fabric C	Cut (3) 5 $\frac{7}{8}$ " x WOF strips. Sub-cut the strips into (16) 5 $\frac{7}{8}$ " squares.
Fabric D	Cut (1) 11 $\frac{1}{4}$ " x WOF strip. Sub-cut the strip into (2) 11 $\frac{1}{4}$ " squares. Cut each square across both diagonals to make (8) 11 $\frac{1}{4}$ " triangles.

Warm Quilt Cutting Directions - Continued

Fabric E	Cut (1) 11 $\frac{1}{4}$ " x WOF strip. Sub-cut the strip into (2) 11 $\frac{1}{4}$ " squares. Cut each square across both diagonals to make (8) 11 $\frac{1}{4}$ " triangles.
Fabric F	Cut (1) 11 $\frac{1}{4}$ " x WOF strip. Sub-cut the strip into (2) 11 $\frac{1}{4}$ " squares. Cut each square across both diagonals to make (8) 11 $\frac{1}{4}$ " triangles. Cut (1) 10 $\frac{7}{8}$ " x WOF strip. Sub-cut the strip into (2) 10 $\frac{7}{8}$ " squares.
Fabric G	Cut (1) 11 $\frac{1}{4}$ " x WOF strip. Sub-cut the strip into (2) 11 $\frac{1}{4}$ " squares. Cut each square across both diagonals to make (8) 11 $\frac{1}{4}$ " triangles.
Fabric H	Cut (1) 11 $\frac{1}{4}$ " x WOF strip. Sub-cut the strip into (2) 11 $\frac{1}{4}$ " squares. Cut each square across both diagonals to make (8) 11 $\frac{1}{4}$ " triangles.
Fabric I	Cut (3) 5 $\frac{7}{8}$ " x WOF strips. Sub-cut the strips into (16) 5 $\frac{7}{8}$ " squares.
Fabric J	Cut (3) 5 $\frac{7}{8}$ " x WOF strips. Sub-cut the strips into (16) 5 $\frac{7}{8}$ " squares.
Fabric K	Cut (2) 5 $\frac{7}{8}$ " x WOF strips. Sub-cut the strips into (8) 5 $\frac{7}{8}$ " squares.
Fabric L	Cut (2) 11 $\frac{1}{4}$ " x WOF strips. Sub-cut the strips into (4) 11 $\frac{1}{4}$ " squares. Cut each square across both diagonals to make (16) 11 $\frac{1}{4}$ " triangles. Cut (5) 10 $\frac{7}{8}$ " x WOF strips. Sub-cut the strips into (14) 10 $\frac{7}{8}$ " squares. From the remaining fabric cut (8) 5 $\frac{7}{8}$ " squares.
Fabric M	Fussy cut (1) 20 $\frac{1}{2}$ " square centered on the orange/purple block.
Binding	Cut (9) 2 $\frac{1}{2}$ " x WOF strips for the binding.
Backing	Cut (3) 88" x WOF strips. Sew the strips together and trim to make (1) 88" x 88" backing.

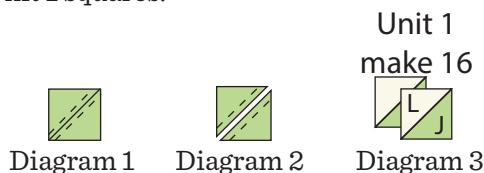
Midnight Magic

Making the Cool Quilt

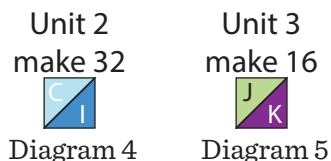
Note: Pay attention to the unit orientations when assembling the various components.

1. Cool Block Assembly

Place (1) 5 7/8" Fabric J square on top of (1) 5 7/8" Fabric L square, right sides together. Draw a line across the diagonal of the top square (Diagram 1). Sew 1/4" away from each side of the drawn diagonal line (Diagram 1). Cut the (2) squares apart on the drawn diagonal line (Diagram 2) to make (2) half-square triangles. Trim the half-square triangles to measure 5 1/2" square to make (2) Unit 1 squares (Diagram 3). Repeat to make (16) Unit 1 squares.



2. Repeat Step 1 and refer to Diagrams 4-5 for fabric identification, placement and seam direction to make (32) Unit 2 squares and (16) Unit 3 squares.



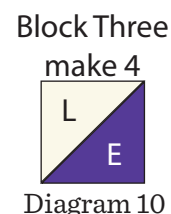
3. Sew (1) Unit 1 square to the left side of (1) Unit 2 square to make the top row. Sew (1) Unit 2 square to the left side of (1) Unit 3 square to make the bottom row. Sew the two rows together lengthwise to make (1) 10 1/2" Block One square (Diagram 6). Repeat to make (16) Block One squares.



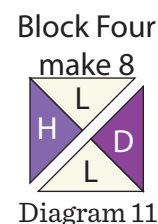
4. Place (1) 10 7/8" Fabric A square on top of (1) 10 7/8" Fabric L square, right sides together. Draw a line across the diagonal of the top square (Diagram 7). Sew 1/4" away from each side of the drawn diagonal line (Diagram 7). Cut the (2) squares apart on the drawn diagonal line (Diagram 8) to make (2) half-square triangles. Trim the half-square triangles to measure 10 1/2" square to make (2) Block Two squares (Diagram 9). Repeat to make (24) Block two squares.



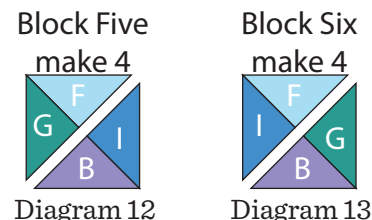
5. Repeat Step 4 and refer to Diagram 10 for fabric identification, placement and seam direction to make (4) Block Three squares.



6. Sew together (1) 11 1/4" Fabric H triangle, (2) 11 1/4" Fabric L triangles and (1) 11 1/4" Fabric D triangle as shown to make (1) Block Four square (Diagram 11). Trim the block to measure 10 1/2". Repeat to make (8) Block Four squares.



7. Repeat Step 6 and refer to Diagrams 12-13 for fabric identification and placement to make (4) Block Five squares and (4) Block Six squares.



Midnight Magic

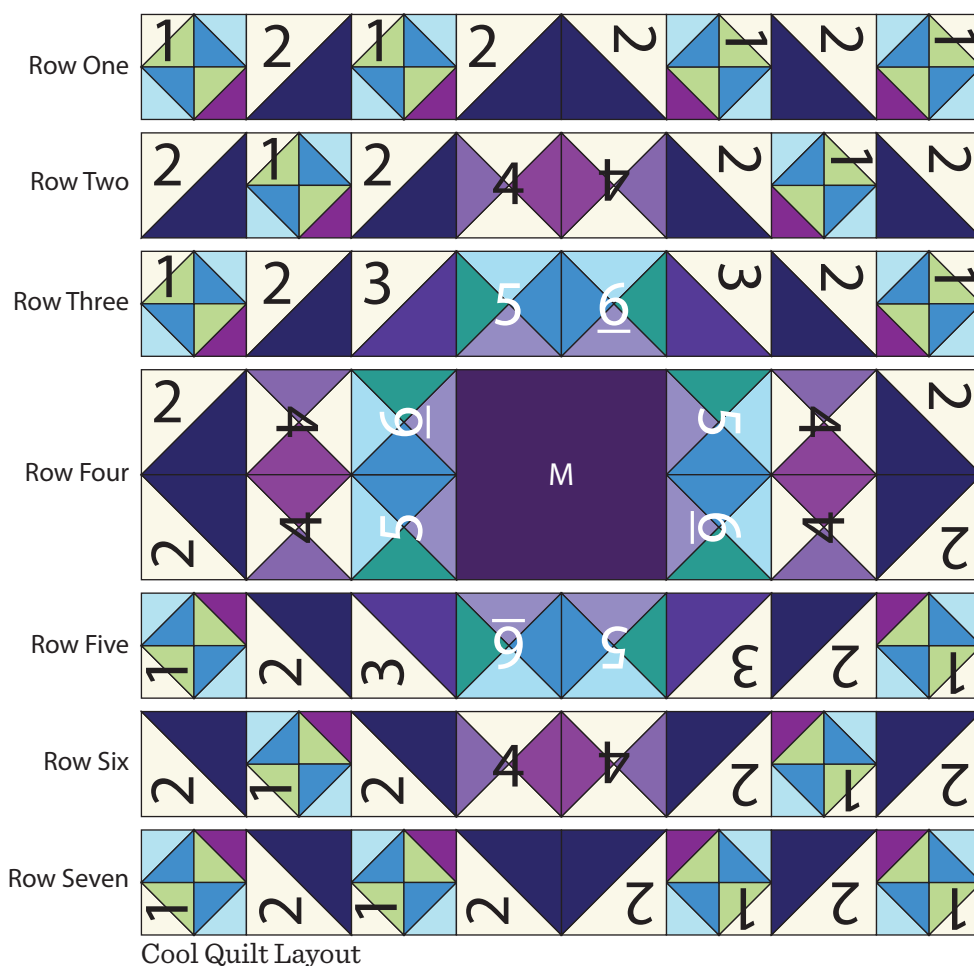
Cool Quilt Top Assembly

(Refer to the Cool Quilt Layout when assembling the quilt top.)

8. Sew together (4) Block One squares and (4) Block Two squares as shown to make Row One
9. Repeat Step 8 and refer to Cool Quilt Layout to make Row Two through Row Seven.
10. Sew together the (7) pieced Rows, lengthwise and in numerical order from top to bottom, to make the cool quilt top.

Finishing the Cool Quilt

11. Layer and quilt as desired.
12. Sew the (9) Fabric H binding strips together, end to end with a 45-degree seams, to make the binding. Fold this long strip in half lengthwise with wrong sides together and press.
13. Bind as desired.



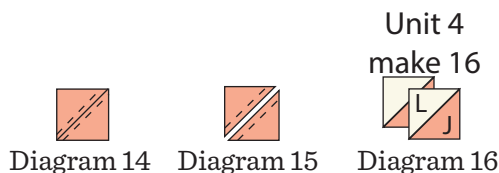
Midnight Magic

Making the Warm Quilt

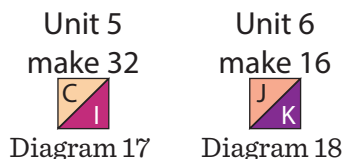
Note: Pay attention to the unit orientations when assembling the various components.

14. Warm Block Assembly

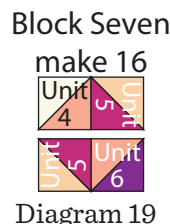
Place (1) 5 7/8" Fabric J square on top of (1) 5 7/8" Fabric L square, right sides together. Draw a line across the diagonal of the top square (Diagram 14). Sew 1/4" away from each side of the drawn diagonal line (Diagram 14). Cut the (2) squares apart on the drawn diagonal line (Diagram 15). Trim the half-square triangles to measure 5 1/2" square to make (2) Unit 4 squares (Diagram 16). Repeat to make (16) Unit 4 squares.



15. Repeat Step 14 and refer to Diagrams 17-18 for fabric identification, placement and seam direction to make (32) Unit 5 squares and (16) Unit 6 squares.



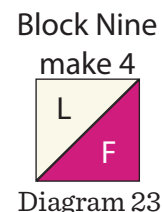
16. Sew (1) Unit 4 square to the left side of (1) Unit 5 square to make the top row. Sew (1) Unit 5 square to the left side of (1) Unit 6 square to make the bottom row. Sew the two rows together lengthwise to make (1) 10 1/2" Block Seven square (Diagram 19). Repeat to make (16) Block Seven squares.



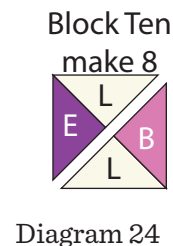
17. Place (1) 10 7/8" Fabric A square on top of (1) 10 7/8" Fabric L square, right sides together. Draw a line across the diagonal of the top square (Diagram 20). Sew 1/4" away from each side of the drawn diagonal line (Diagram 20). Cut the (2) squares apart on the drawn diagonal line (Diagram 21) to make (2) half-square triangles. Trim the half-square triangles to measure 10 1/2" square to make (2) Block Eight squares (Diagram 22). Repeat to make (24) Block Eight squares.



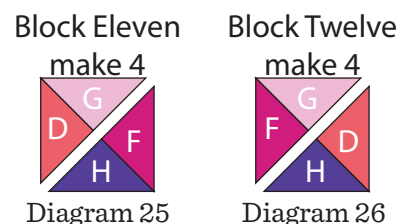
18. Repeat Step 17 and refer to Diagram 23 for fabric identification, placement and seam direction to make (4) Block Nine squares.



19. Sew together (1) 11 1/4" Fabric E triangle, (2) 11 1/4" Fabric L triangles and (1) 11 1/4" Fabric B triangle as shown to make (1) Block Ten square (Diagram 24). Trim the block to measure 10 1/2". Repeat to make (8) Block Ten squares.



20. Repeat Step 19 and refer to Diagrams 25-26 for fabric identification and placement to make (4) Block Eleven squares and (4) Block Twelve squares.



Midnight Magic

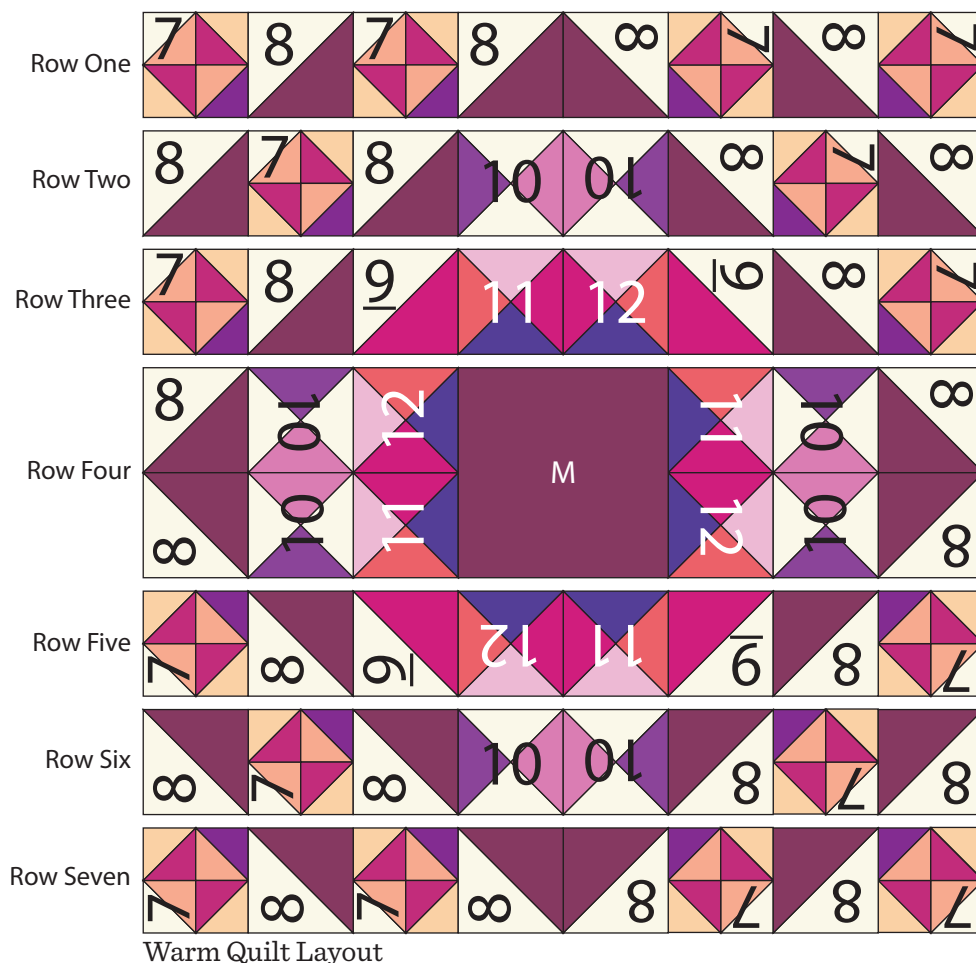
Warm Quilt Top Assembly

(Refer to the Warm Quilt Layout when assembling the quilt top.)

21. Sew together (4) Block Seven squares and (4) Block Eight squares as shown to make Row One
22. Repeat Step 21 and refer to Warm Quilt Layout to make Row Two through Row Seven.
23. Sew together the (7) pieced Rows, lengthwise and in numerical order from top to bottom, to make the warm quilt top.

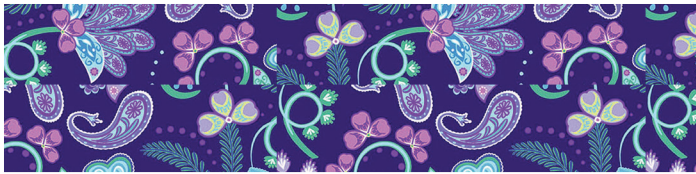
Finishing the Warm Quilt

24. Layer and quilt as desired.
25. Sew the (9) Fabric I binding strips together, end to end with a 45-degree seams, to make the binding. Fold this long strip in half lengthwise with wrong sides together and press.
26. Bind as desired.



Molly's Magic & Fantasy Garden

Sarah Maxwell



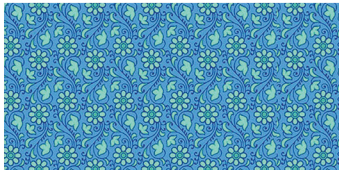
1500-B

1 $\frac{3}{8}$ yds
(cool version)



1500-E

1 $\frac{3}{8}$ yds
(warm version)

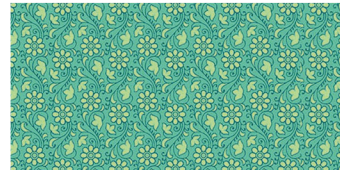


1501-B



1501-E
(includes warm backing)

7 $\frac{7}{8}$ yds
(warm version)



1501-G



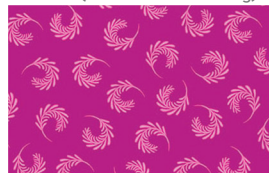
1501-P
(includes cool backing)

7 $\frac{7}{8}$ yds
(cool version)



1502-B

$\frac{5}{8}$ yd
(cool version)



1502-E



1502-G



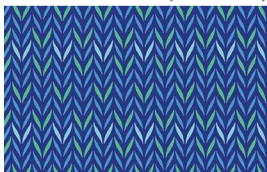
1502-O

$\frac{3}{8}$ yd
(warm version)

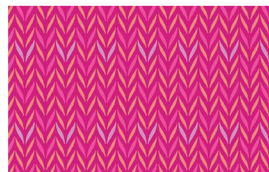


1502-P

$\frac{3}{8}$ yd
(both versions)



1503-B



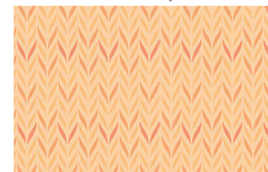
1503-E

$\frac{3}{4}$ yd
(warm version)



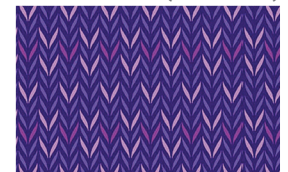
1503-LE

$\frac{3}{8}$ yd
(warm version)



1503-O

$\frac{5}{8}$ yd
(warm version)



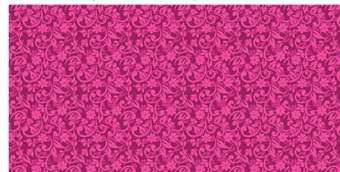
1503-P

$\frac{3}{8}$ yd
(both versions)



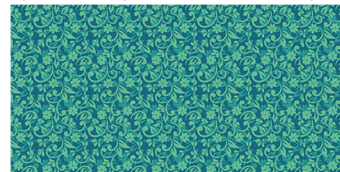
1504-B

$\frac{3}{8}$ yd
(cool version)



1504-E
(includes warm binding)

1 $\frac{3}{8}$ yds
(warm version)



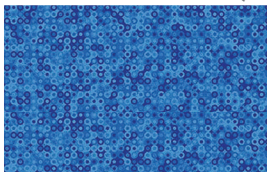
1504-G

$\frac{3}{8}$ yd
(cool version)



1504-P
(includes cool binding)

1 $\frac{1}{8}$ yd
(cool version)



1505-B

$\frac{7}{8}$ yd
(cool version)



1505-E

$\frac{5}{8}$ yd
(warm version)



1505-G

$\frac{5}{8}$ yd
(cool version)



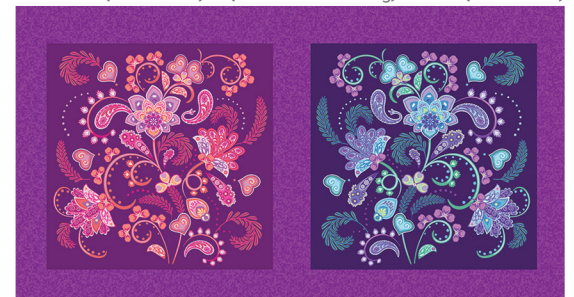
1505-L

2 $\frac{1}{4}$ yds
(both versions)



1505-P

$\frac{1}{2}$ yd
(both versions)



1553-X

1 panel
(both versions)

Bolts needed to cut project kits: 15 yds = 1 bolt

andover : makower uk

Free Pattern Download Available

1384 Broadway New York, NY 10018
Tel. (800) 223-5678 • andoverfabrics.com