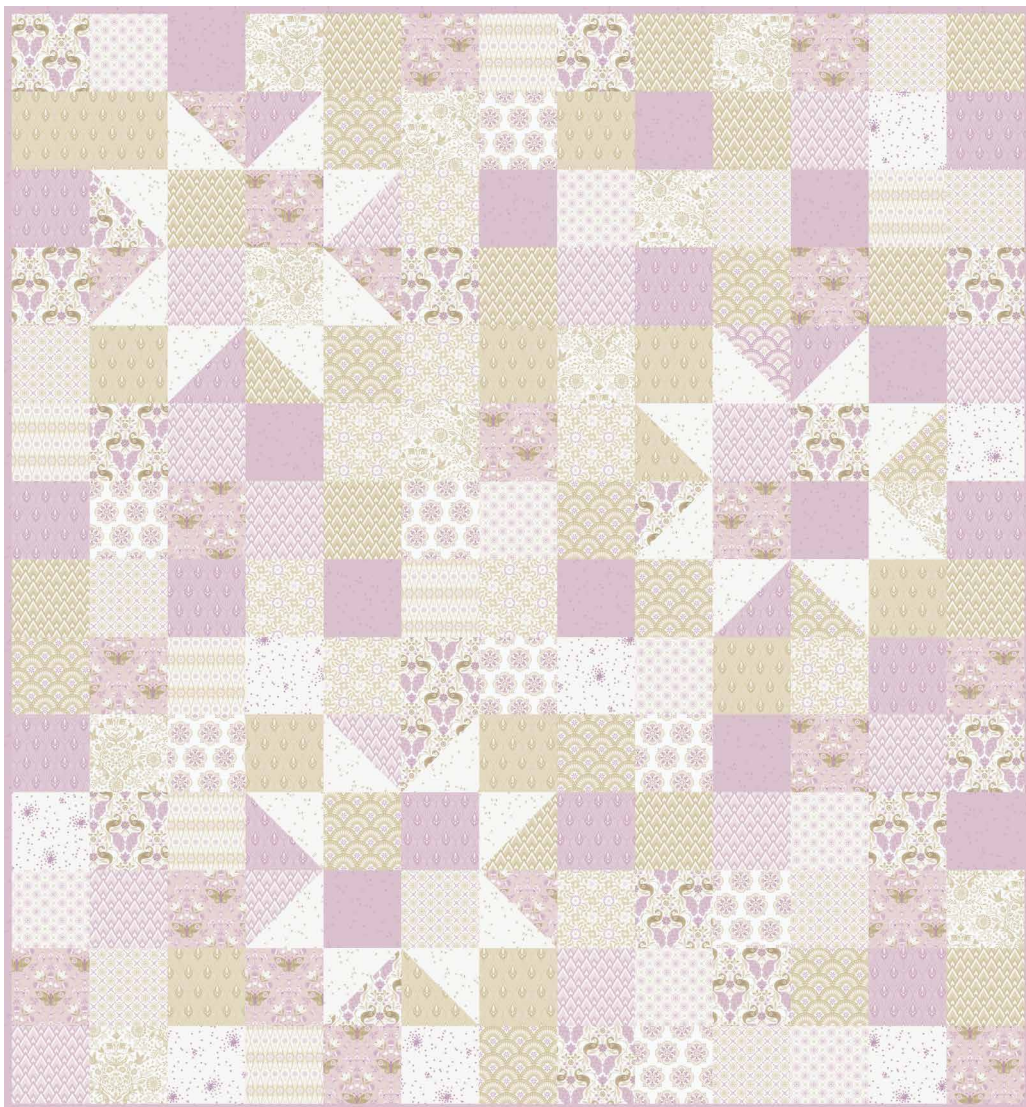


# STARSHINE QUILT PROJECT

*Beginner friendly!*

*Featuring* **BOHEMIAN SPIRIT** | *Dots & Glory*



**CLOUD9**  
FABRICS

organic cotton. happy you. happy earth.

© CLOUD9 FABRICS 2025 | ALL RIGHTS RESERVED | CLOUD9FABRICS.COM | FOR PERSONAL USE ONLY

## INFO & MATERIALS

### STARSHINE QUILT

SIZE: 59" x 63½"

DESIGNER: Amy Lollis

TECHNICAL EDITOR: Linda Spiridon

This project uses 5 packs of 5" squares

See chart below for fabric quantities

⅝ yd background fabric

½ yd binding

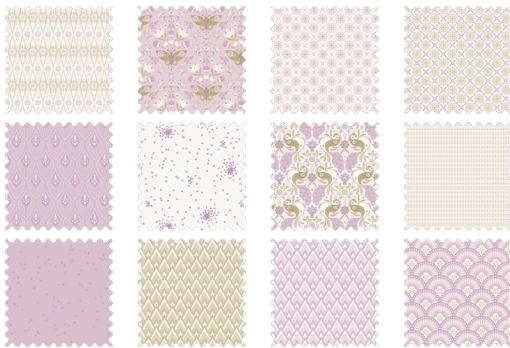
4 yd backing

Note: All possible care has been taken to assure the accuracy of this pattern. We are not responsible for printing errors or the manner in which individual work varies. Please read instructions carefully before starting the construction of this quilt. If desired, wash and iron your fabrics before starting to cut.

## QUILT FACE MATERIALS

*Cutting dimensions include ¼" seam allowances.*

5 - packs of 5" squares for a total of 182 squares



⅝ yd background fabric

Cut 24- 5" squares

BACKGROUND  
FABRIC



## DIAGRAMS

fig 1

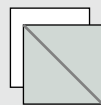


fig 2

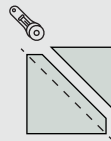


fig 3



## ASSEMBLY DIRECTIONS

1. Place background square and print square together with Right Sides Together (RST). Mark a diagonal line (*fig1*). Sew on the marked line. Trim ¼" seam allowance (*fig2*) and press the seam to one side. Trim HSTs to 5" (*fig3*). Make 24 HSTs.
2. Layout pieced squares in rows referring to the **QUILT LAYOUT DIAGRAM** for placement. Sew squares into rows. Sew horizontal rows together, pressing seams as you go.
3. Layer the backing, batting and quilt top. Baste, quilt and bind.

# QUILT LAYOUT DIAGRAM

