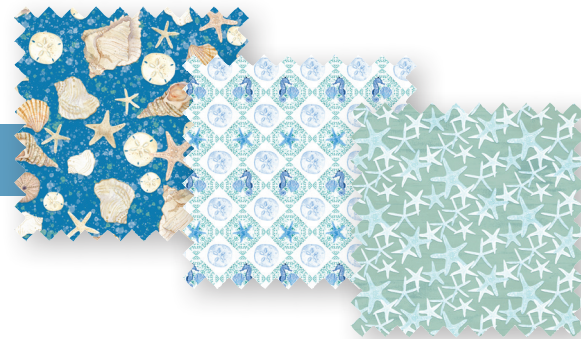


# Sea Whispers

Sea Whispers Quilt designed by Wendy Sheppard



Approximate size: 68" x 68"



*Featuring fabrics from the Sea Whispers fabric collection  
by Audrey Jeanne Roberts*

P&B Textiles • pbtex.com • p800-351-9087 • 208 Clock Tower Square, Portsmouth, RI 02871



# Sea Whispers

Fabric collection by Audrey Jeanne Roberts  
Sea Whispers Quilt designed by Wendy Sheppard  
Finished size approximately: 68" x 68"

## Yardage:

<b>Fabric A</b>	SWHI5778-MU .....	1 1/4 yards
<b>Fabric B</b>	SWHI5780-W.....	5/8 yard
<b>Fabric C</b>	SWHI5781-WMU .....	7/8 yard
<b>Fabric D</b>	SWHI5782-EB .....	3/4 yard
<b>Fabric E</b>	SWHI5783-B.....	1/4 yard
<b>Fabric F</b>	SWHI5783-G .....	1/4 yard
<b>Fabric G</b>	SWHI5784-W.....	5/8 yard
<b>Fabric H</b>	SUE7303-EW .....	1 1/4 yards
<b>Backing</b>	.....	4 1/4 yards
<b>Batting</b>	.....	74" x 74"

## Cutting Instructions:

Please read all instructions carefully before beginning. Strips are cut across the width of fabric **WOF** (perpendicular to selvages) unless otherwise stated. All seams are sewn with 1/4" seam unless otherwise stated. Label all pieces.

### Fabric A:

- Fussy cut sixteen 9 1/2" x 9 1/2" squares each centered on a block. (**Blocks**)

### Fabric B:

- Cut eight 2 1/2" x WOF strips; sub-cut thirty-two 2 1/2" x 9 1/2" rectangles. (**Blocks**)

### Fabric C:

- Cut one 2" x WOF strip; sub-cut nine 2" x 2" squares. (**Cornerstones**)
- Cut seven 1" x WOF strips. Sew the strips together end to end with diagonal seams and cut two 1" x 60" strips and two 1" x 61" strips. (**Inner Border #2**)
- Cut eight 2 1/4" x WOF strips. (**Binding**)

### Fabric D:

- Cut seven 3 1/4" x WOF strips. Sew the strips together end to end and cut two 3 1/4" x 63" strips and two 3 1/4" x 68 1/2" strips. (**Outer Border**)

### Fabric E:

- Cut two 2 1/2" x WOF strips; sub-cut thirty-two 2 1/2" x 2 1/2" squares. (**Blocks**)

### Fabric F:

- Cut two 2 1/2" x WOF strips; sub-cut thirty-two 2 1/2" x 2 1/2" squares. (**Blocks**)

### Fabric G:

- Cut eight 2 1/2" x WOF strips; sub-cut thirty-two 2 1/2" x 9 1/2" rectangles. (**Blocks**)

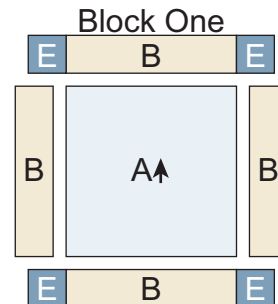
### Fabric H:

- Cut one 13 1/2" x WOF strip; sub-cut twenty 2" x 13 1/2" rectangles. (**Sashing**)
- Cut two 2" x WOF strips; sub-cut four 2" x 13 1/2" rectangles. (**Sashing**)
- Cut six 2" x WOF strips. Sew the strips together end to end with diagonal seams and cut two 2" x 57" strips and two 2" x 60" strips. (**Inner Border #1**)
- Cut seven 1 1/2" x WOF strips. Sew the strips together end to end with diagonal seams and cut two 1 1/2" x 61" strips and two 1 1/2" x 63" strips. (**Inner Border #3**)

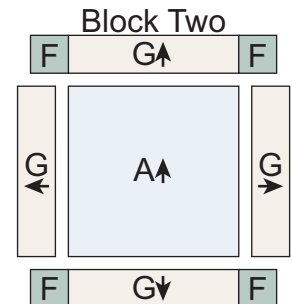
## Piecing Instructions:

Note: Pay attention to the unit orientations while assembling the various components.

- Sew one 2 1/2" x 9 1/2" **Fabric B** rectangle to each side of one 9 1/2" **Fabric A** square. Sew one 2 1/2" **Fabric E** square to each end of one 2 1/2" x 9 1/2" **Fabric B** rectangle. Repeat to make a second rectangle. Sew one newly sewn rectangle to the top and bottom of the **Fabric A** square to make one 13 1/2" Block One square. (Diagram 1) Repeat to make eight Block One squares total.
- Sew one 2 1/2" x 9 1/2" **Fabric G** rectangle to each side of one 9 1/2" **Fabric A** square. Sew one 2 1/2" **Fabric F** square to each end of one 2 1/2" x 9 1/2" **Fabric G** rectangle. Repeat to make a second rectangle. Sew one newly sewn rectangle to the top and bottom of the **Fabric A** square to make one 13 1/2" Block Two square. (Diagram 2) Repeat to make eight Block Two squares total.

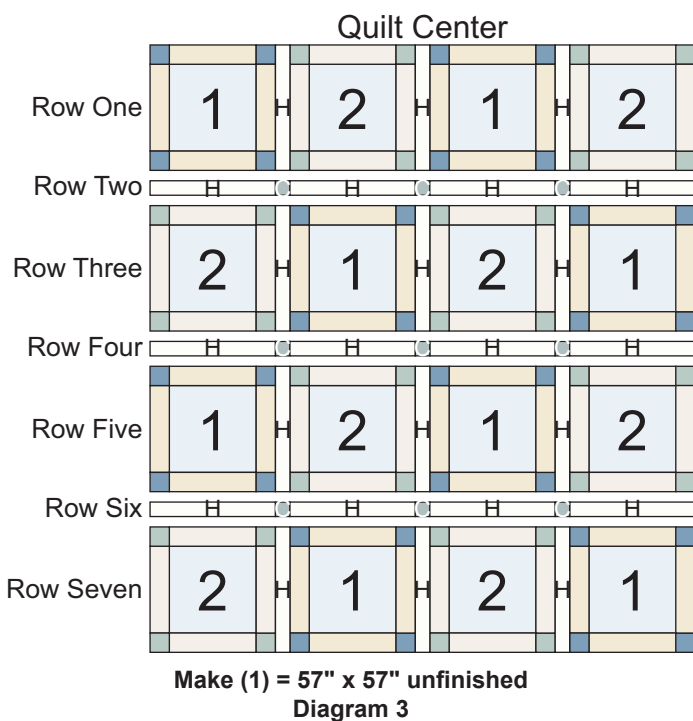


Make (8) = 13 1/2" x 13 1/2"  
unfinished  
Diagram 1



Make (8) = 13 1/2" x 13 1/2"  
unfinished  
Diagram 2

3. Sew together one Block One square, one 2" x 13 1/2" **Fabric H** rectangle, one Block Two square, 2" x 13 1/2" **Fabric H** rectangle, one Block One square, 2" x 13 1/2" **Fabric H** rectangle and one Block Two square, in that order from left to right, to make Row One. (Diagram 3) Repeat to make Row Five.
4. Sew together four 2" x 13 1/2" **Fabric H** rectangles and three 2" **Fabric C** squares, alternating them from left to right, to make Row Two. (Diagram 3) Repeat to make Row Four and Row Six.
5. Sew together one Block Two square, one 2" x 13 1/2" **Fabric H** rectangle, one Block One square, 2" x 13 1/2" **Fabric H** rectangle, one Block Two square, 2" x 13 1/2" **Fabric H** rectangle and one Block One square, in that order from left to right, to make Row Three. (Diagram 3) Repeat to make Row Seven.
6. Sew together the seven pieced Rows, lengthwise and in numerical order from top to bottom, to make the 57" x 57" Quilt Center.

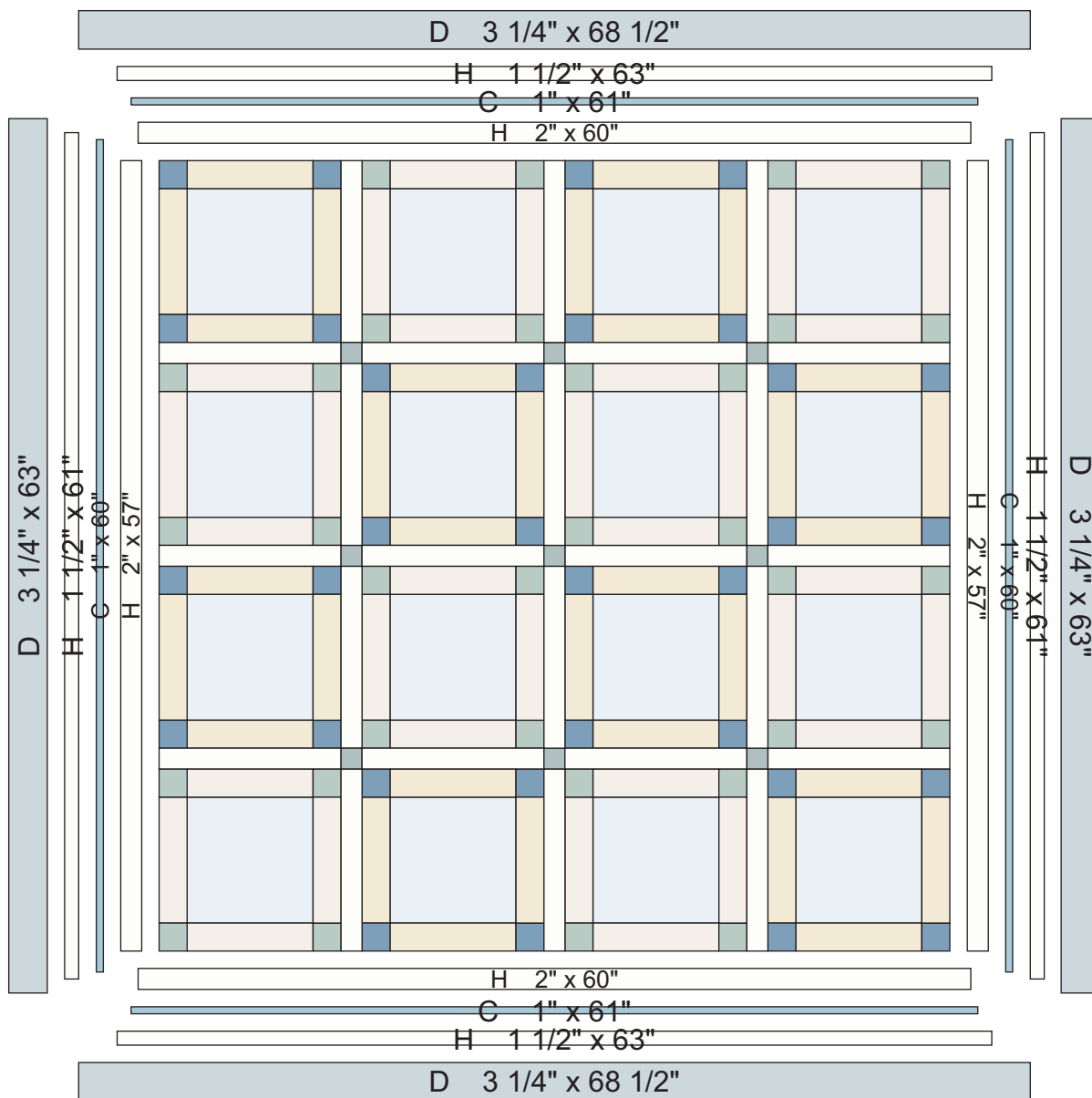


## Quilt Assembly:

7. Sew one 2" x 57" **Fabric H** strip to each side of the Quilt Center. Sew one 2" x 60" **Fabric H** strip to the top and bottom of the Quilt Center.
8. Sew one 1" x 60" **Fabric C** strip to each side of the Quilt Center. Sew one 1" x 61" **Fabric C** strip to the top and bottom of the Quilt Center.
9. Sew one 1 1/2" x 61" **Fabric H** strip to each side of the Quilt Center. Sew one 1 1/2" x 63" **Fabric H** strip to the top and bottom of the Quilt Center.
10. Sew one 3 1/4" x 63" **Fabric D** strip to each side of the Quilt Center. Sew one 3 1/4" x 68 1/2" **Fabric D** strip to the top and bottom of the Quilt Center to make the quilt top.

## Finishing:

11. Prepare backing using two widths of fabric with vertical seam. Press seams open. Trim to 74" x 74".
12. Layer the quilt, batting and backing. Baste layers together.
13. Quilt as desired.
14. Trim layers even with quilt top, squaring corners.
15. Attach 2 1/4" **Fabric C** binding strips using your favorite method.



Quilt Diagram

# Sea Whispers

Fabric Collection by  
Audrey Jeanne Roberts



**SWHI5778-MU**  
*Fabric A*



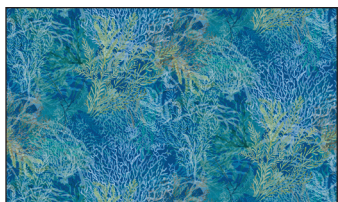
**SWHI5779-LBG**



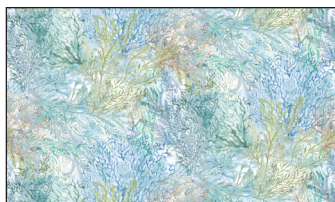
**SWHI5780-B**



**SWHI5780-W**  
*Fabric B*



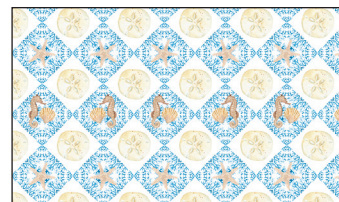
**SWHI5781-BMU**



**SWHI5781-WMU\***  
*Fabric C*



**SWHI5782-BG**



**SWHI5782-EB**  
*Fabric D*



**SWHI5783-B**  
*Fabric E*



**SWHI5783-G**  
*Fabric F*



**SWHI5783-LB**



**SWHI5784-W**  
*Fabric G*



**SUE7303-EW**  
*Fabric H*

**Quilt Fabrics in Bold**

\* Binding

† Backing

P&B Textiles • pbtex.com • p800-351-9087 • 208 Clock Tower Square, Portsmouth, RI 02871

