

Hocus Pocus

Hocus Pocus Apron designed by Stacey Day



Approximate size: One size fits most

*Featuring fabrics from Hocus Pocus fabric collection
by Deane Beesley*

P&B Textiles • pbtex.com • p800-351-9087 • 208 Clock Tower Square, Portsmouth, RI 02871



Hocus Pocus

Fabric collection by Deane Beesley
Hocus Pocus Apron designed by Stacey Day
Finished size approximately: One Size Fits Most

Yardage:

Fabric A	HPOC5824-MU	2 yards
Fabric B	HPOC5826-KE	1/3 yard
Fabric C	HPOC5832-MU	3/8 yard
Lightweight Fusible Interfacing	5/8 yard

Cutting Instructions:

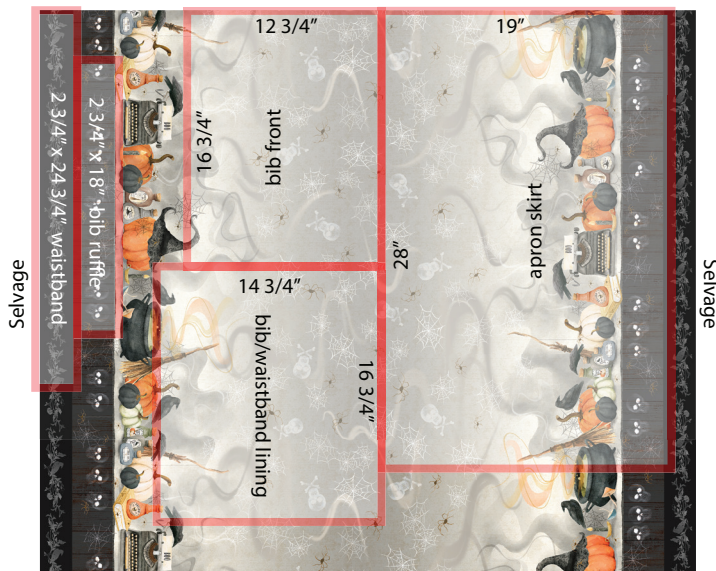
Please read all instructions carefully before beginning. Strips are cut across the width of fabric **WOF** (perpendicular to selvages) unless otherwise stated. All seams are sewn with 1/4" seam unless otherwise stated. Label all pieces.

Fabric A: (see cutting diagram below)

- Fussy cut one 2 3/4" x 24 3/4" Length of Fabric (LOF) rectangle centered on the birds/branches. **(Waistband)**

Note: You may need to cut partially into the selvedge in order to center the motif.

- Fussy cut one 2 3/4" x 18" LOF rectangle centered on the skulls. **(Bib Ruffle)**
- Fussy cut one 19" x 28" LOF rectangle. **(Apron Skirt)**
- Fussy cut one 12 3/4" x 16 3/4" LOF rectangle. **(Bib Front)**
- Fussy cut one 14 3/4" x 16 3/4" LOF rectangle. **(Apron Bib & Waistband Lining)**



Fabric A Cutting Diagram

Fabric B:

- Cut two 4 1/2" x 18 1/2" rectangles. **(Waist Ties)**
- Cut two 3 1/2" x 14 1/2" rectangles. **(Neck Ties)**

Fabric C:

- Cut four Pocket templates. **(Pockets)**

Lightweight Fusible Interfacing:

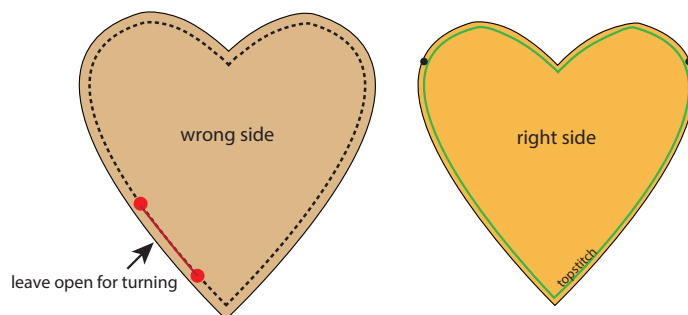
- Cut two 4 1/2" x 18 1/2" rectangles. **(Waist Ties)**
- Cut two 3 1/2" x 14 1/2" rectangles. **(Neck Ties)**
- Cut one 2 3/4" x 24 3/4" rectangle. **(Waistband)**

Assembly Instructions:

Note: Seam allowances are stated in each step.

Topstitching is 1/8" from the edge, and is shown in green in the diagrams.

- Following the manufacturer's instructions, fuse the interfacing to the wrong side of the corresponding fabric piece.
- Pin the **Fabric C** pockets right sides together in pairs. Sew a 1/4" seam around the perimeter, leaving a small opening. Clip the seam allowance to, but not through, the point of the heart and turn right side out. Press well, smoothing out the curves, and then topstitch around the heart to close the gap. Mark the stitching start/stop lines using a removable fabric marking pen and set aside. (Diagram 1)



Make (2)
Diagram 1

- Fold the **Fabric A** bib front and bib lining in half lengthwise to find the center. Mark the center, and 6 3/8" from either side along the top raw edge of each. On the bib lining **ONLY**, mark 2 3/8" up from the bottom. Trim the corners as shown from each to shape the bib. (Diagram 2-3) Set aside.

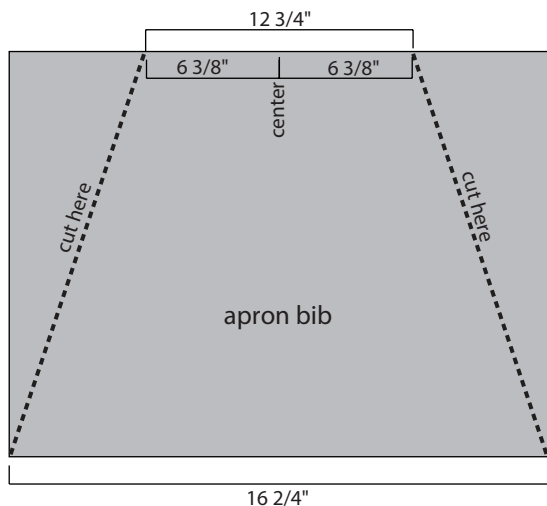


Diagram 2

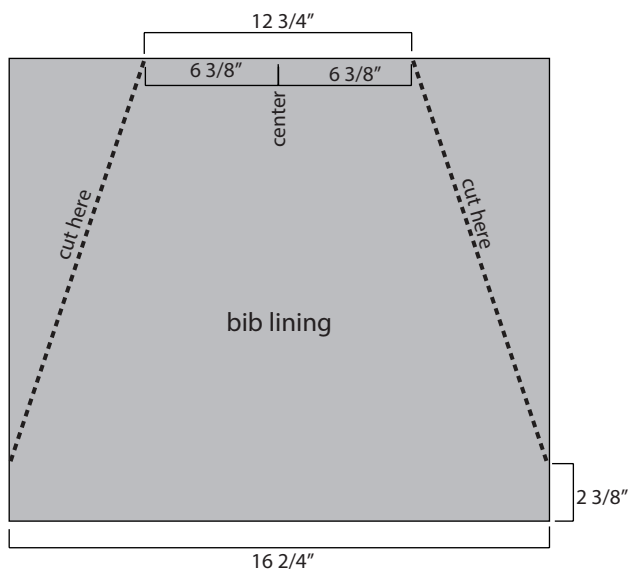


Diagram 3

4. Fold the waist ties in half widthwise and sew around one end and the length, leaving the other end open for turning. Turn the waist ties right side out, press well, and topstitch. Repeat for the neck ties.

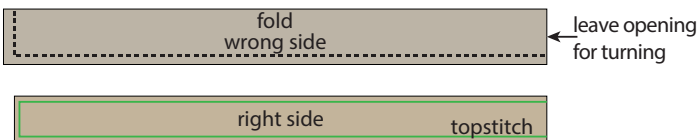


Diagram 4

5. Fold the bottom of the bib ruffle 1/4" to the wrong side, then fold again to enclose the raw edge. Topstitch to finish the bottom edge.

6. Sew two lines of basting 1/4" and 1/2" from the top edge of the ruffle. Gather the ruffle to 12 1/2" long, making sure the gathers are evenly dispersed along the piece. Pin the ruffle to the right side top of the bib; baste using a 3/8" seam. Leave all basting for now.

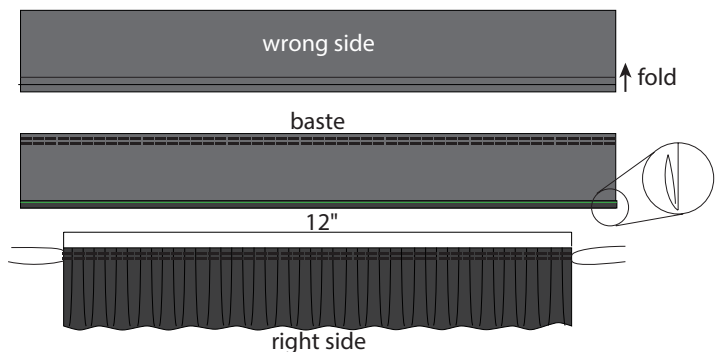


Diagram 5

7. Sew the waistband to the bottom of the bib using a 1/4" seam. (Diagram 6) Press towards the waistband.

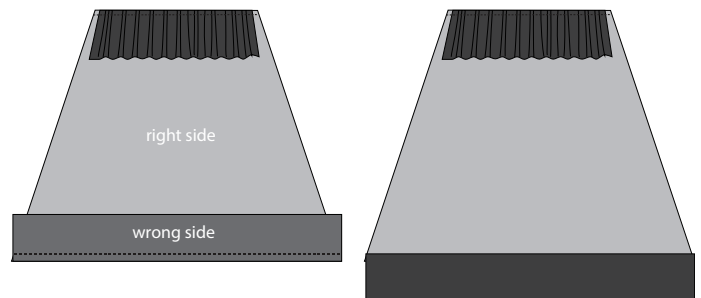


Diagram 6

8. Fold the sides of the apron skirt 1/4" to the wrong side, then fold again to enclose the raw edge. Topstitch to finish the sides. Repeat with the bottom.
9. Pin the pockets to the apron skirt as shown. (Diagram 7) Topstitch around the sides and bottom starting and stopping at the marked dots, overlapping the original line of topstitching. Topstitch again 1/4" from the previous line, joining the two lines of stitching with a small straight line at the dots.

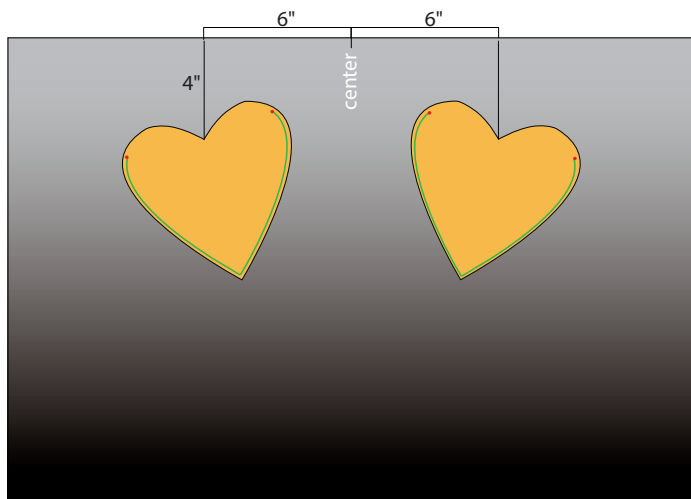


Diagram 7

10. Sew two lines of basting $\frac{1}{4}$ " and $\frac{1}{2}$ " from the top edge of the apron skirt. Gather the apron skirt to 16 $\frac{1}{2}$ " long, making sure the gathers are evenly dispersed along the piece. Pin the waistband/bib to the skirt right sides together and sew using a $\frac{3}{8}$ " seam. Press towards the waistband. Remove the basting from the skirt. (Diagram 8)

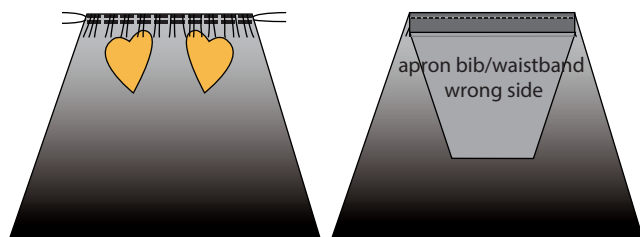


Diagram 8

11. Pin the neck ties to the bib $\frac{1}{2}$ " from the sides; baste. (Diagram 9)
12. Pin the waist ties to the waistband; baste. (Diagram 9)

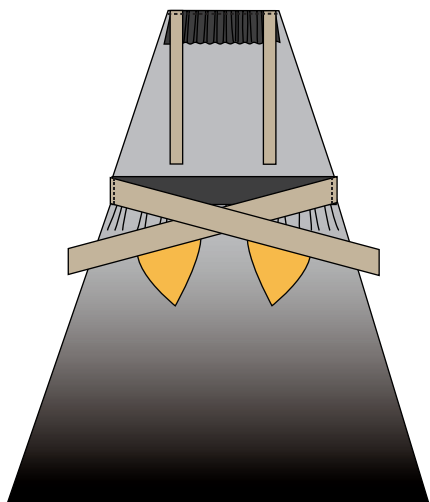


Diagram 9

13. Arrange the skirt, waist ties, neck ties, and ruffle so they are right sides together with the bib/waistband, making sure that all of the pieces are within the seam allowances of the bib/waistband piece. Pin the bib lining right sides together on the bib/waistband, enclosing all of the pieces between the lining and bib/waistband. Sew the pieces together using a $\frac{3}{8}$ " seam allowance, leaving an opening on the bottom of the bib lining for turning. (Diagram 10)
14. Turn the apron right sides out through the opening. Press flat. Push the top ruffle and waist/neck bands out, topstitch the sides of the bib and on either side of the bib and waistband. Push the ruffle back down over top of the bib then topstitch across the top. (Diagram 10)

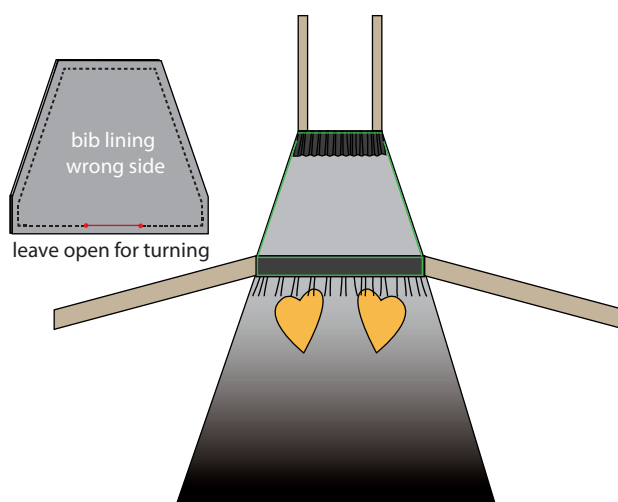
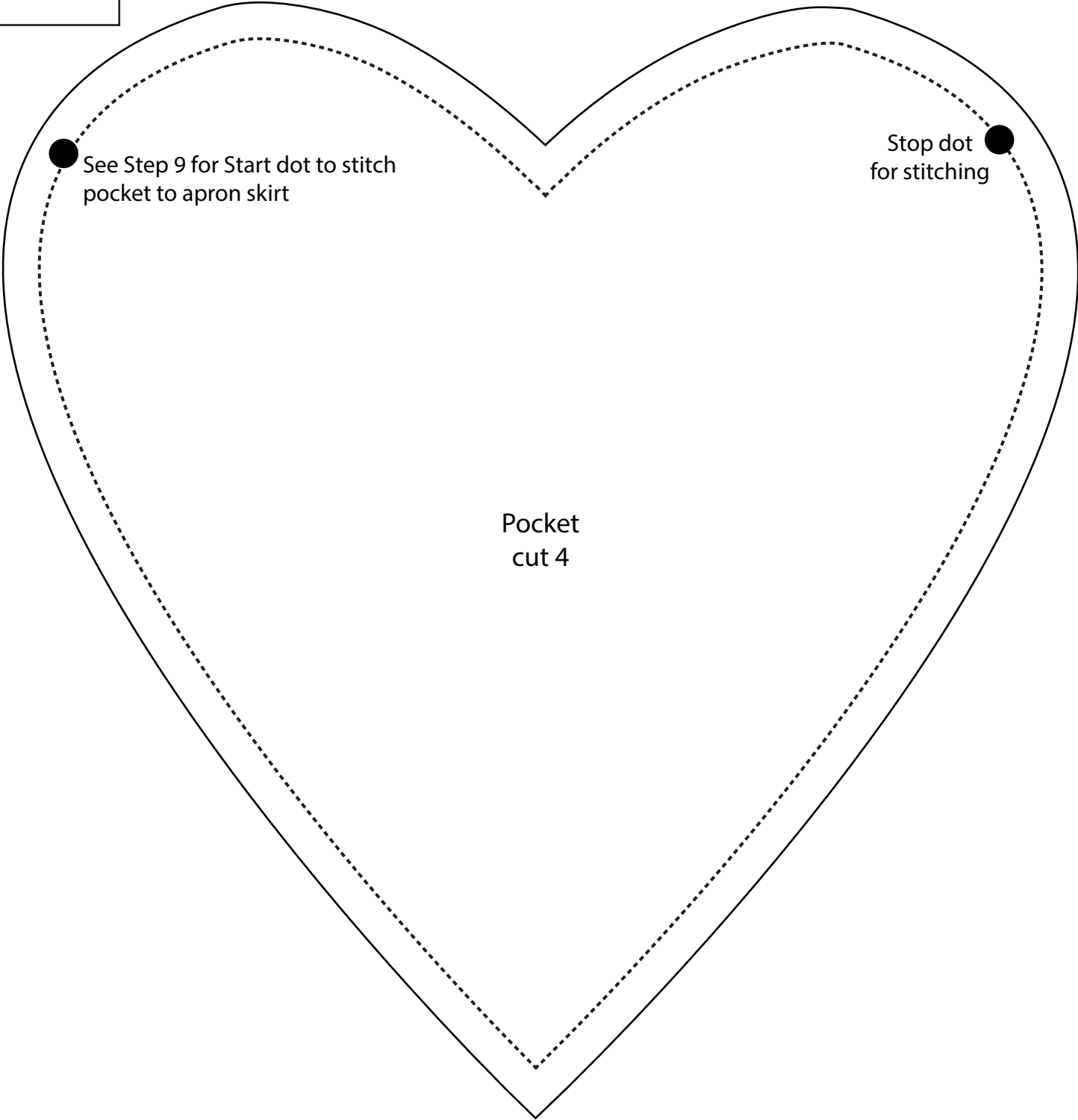


Diagram 10

100% Template

1" square
for scale



Hocus Pocus

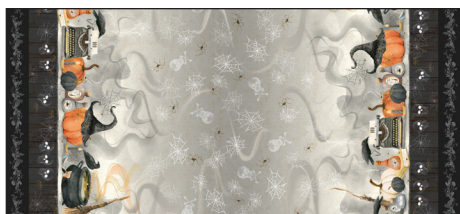
Fabric Collection by
Deane Beesley



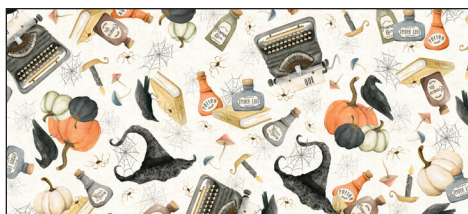
HPOC5822-PA



HPOC5823-MU



HPOC5824-MU
Fabric A



HPOC5825-E



HPOC5826-KE
Fabric B



HPOC5827-S



HPOC5828-G



HPOC5828-O



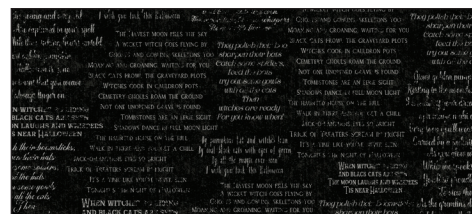
HPOC5828-S



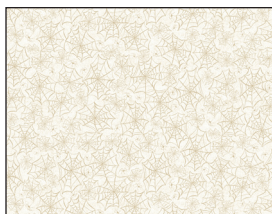
HPOC5829-EO



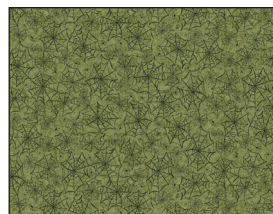
HPOC5829-S



HPOC5830-K



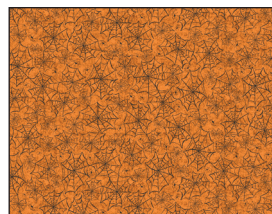
HPOC5831-E



HPOC5831-G



HPOC5831-K



HPOC5831-O



HPOC5832-MU*
Fabric C

You will Also need:

Lightweight fusible interfacing

Quilt Fabrics in Bold

P&B Textiles • pbtex.com • 800-351-9087 • 208 Clock Tower Square, Portsmouth, RI 02871

