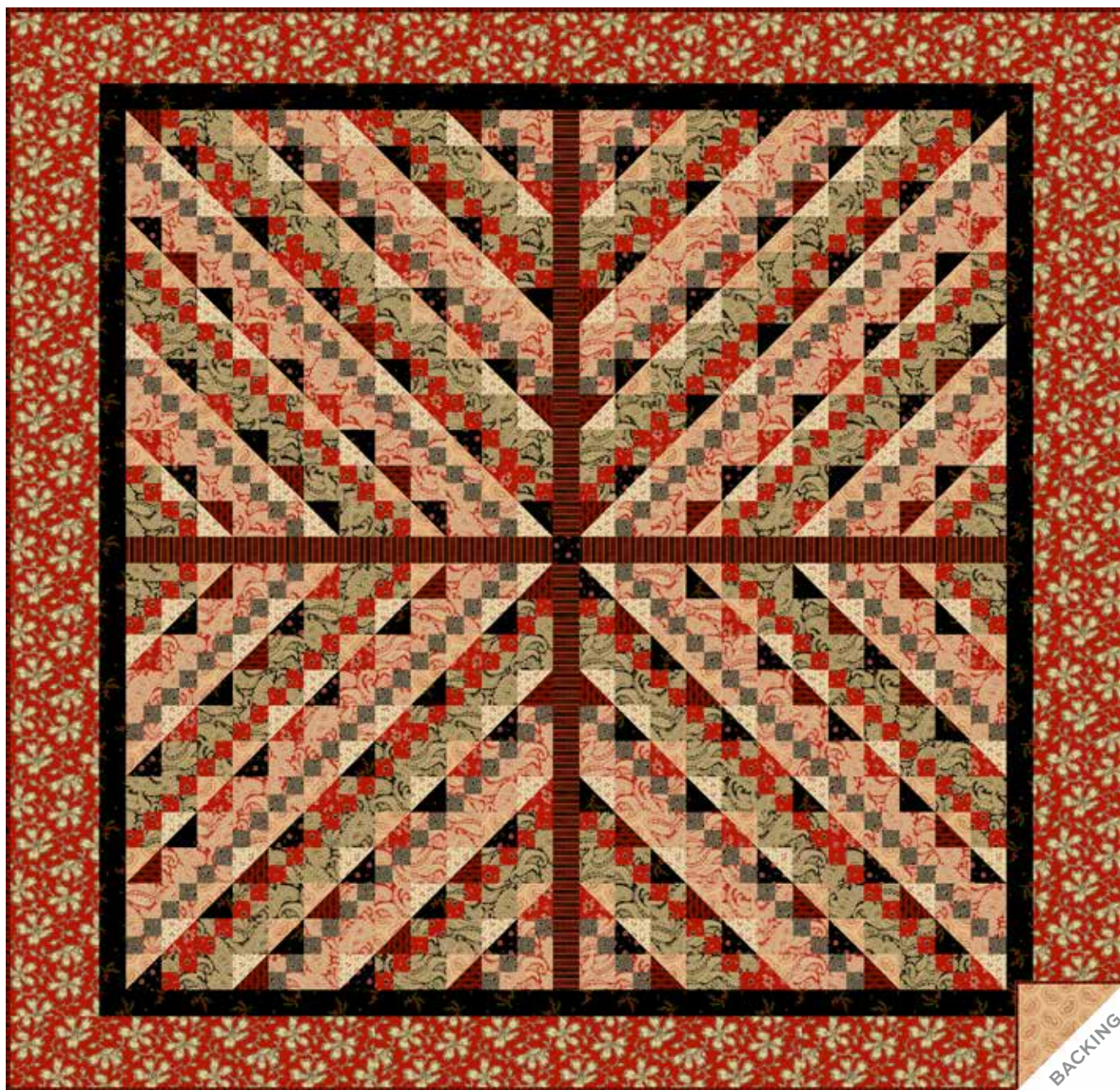


# Carolina

JO MORTON



Carolina Crossing Quilt designed by: **Candy Hargrove**

Quilt Size: **62½" x 62½"** • Skill Level: **Confident Beginner**

# Carolina Crossing Quilt

Introducing Andover Fabrics new collection: CAROLINA by Jo Morton

Quilt designed by Candy Hargrove

Quilt finishes 62½" x 62½"  
208 4-Patch Blocks: 2" x 2"

*As interesting as an inlaid puzzle, this wall quilt is made with quick techniques that result in easy-to-piece patchwork. Follow the Quilt Diagram for precise placement of the half-square triangles (HST), 4-Patch blocks, and little paisley squares to obtain the graphic diagonal design. The Civil War era prints — a mix of medium and small-scale paisleys, florals, and stripes — impart richness to the piece.*

Fabric Requirements	Yardage	Fabric
<b>Fabric A</b> border 2	2 yards	5311-R
<b>Fabric B</b> blocks	1 yard	5312-K
<b>Fabric C</b> blocks	1 yard	5312-R
<b>Fabric D</b> HST	¼ yard	5313-R
<b>Fabric E</b> HST	⅜ yard	5314-R
<b>Fabric F</b> border 1, HST	⅝ yard	5315-KR
<b>Fabric G</b> HST, center	¼ yard	5316-K
<b>Fabric H</b> blocks	⅜ yard	5316-R
<b>Fabric I</b> blocks	⅜ yard	5317-K
<b>Fabric J</b> HST	⅜ yard	5318-R
<b>Fabric K</b> HST	¼ yard	5319-R
<b>Fabric L</b> sashes	⅜ yard	5181-R
<b>Binding</b>	⅝ yard	5319-R
<b>Backing</b>	4 yards	5314-R

## Cutting Directions

**Note:** Read assembly directions before cutting patches. All measurements are cut sizes and include ¼" seam allowances. Borders are cut the exact lengths required plus ¼" seam allowances. WOF designates the width of fabric from selvedge to selvedge (approximately 42" wide).

**Hint:** Use your favorite method to make HST that *finish* 2" square or follow the directions here. If you prefer, cut the 2⅞" squares for HST 3", and trim the HST after piecing.

**Fabric A** Cut 2 borders 5½" x 63", cut lengthwise  
Cut 2 borders 5½" x 53", cut lengthwise

**Fabric B** Cut 88 squares 2½" x 2½"  
Cut 8 strips 1½" x WOF for 4-Patch blocks

**Fabric C** Cut 88 squares 2½" x 2½"  
Cut 8 strips 1½" x WOF for 4-Patch blocks

**Fabric D** Cut 26 squares 2⅞" x 2⅞" for HST

**Fabric E** Cut 48 squares 2⅞" x 2⅞" for HST

**Fabric F** Cut 2 borders 2" x 53", cut crosswise and pieced  
Cut 2 borders 2" x 50", cut crosswise and pieced  
Cut 23 squares 2⅞" x 2⅞" for HST

**Fabric G** Cut 22 squares 2⅞" x 2⅞" for HST  
Cut 1 square 2" x 2" for center

**Fabric H** Cut 8 strips 1½" x WOF for 4-Patch blocks

**Fabric I** Cut 8 strips 1½" x WOF for 4-Patch blocks

**Fabric J** Cut 48 squares 2⅞" x 2⅞" for HST

**Fabric K** Cut 25 squares 2⅞" x 2⅞" for HST

**Fabric L** Cut 4 sashes 2" x 24½", cut crosswise

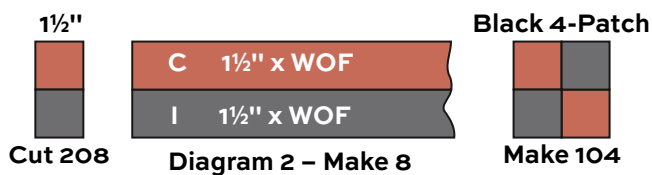
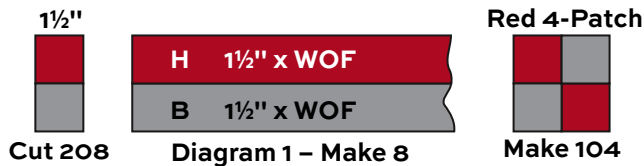
**Binding** Cut (7) strips 2½" x WOF for binding

**Backing** Cut (2) lengths 36" x 71", pieced to fit quilt top with overlap on all sides

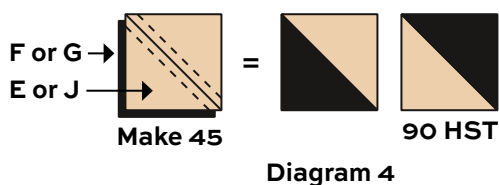
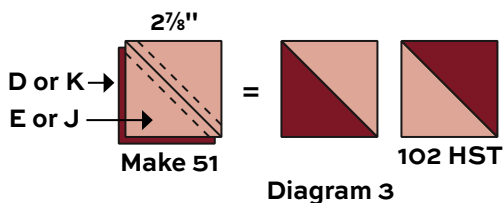
# Carolina Crossing Quilt

## Making the Quilt

1. Sew  $1\frac{1}{2}$ " x WOF strips in the combinations shown (Diagrams 1 and 2). Press the seam allowances toward the black print strips. Make 8 pieced bands of each combination. From each band, cut 26 segments each  $1\frac{1}{2}$ " wide. Cut a total of 208 segments of each color combination. Join 2 like segments to make a 4-Patch block. It should measure  $2\frac{1}{2}$ " square from edge to edge, including seam allowances. Make 104 blocks in each color.



2. To make the half-square triangles (HST), draw a diagonal line on the wrong side of the Fabric E and Fabric J  $2\frac{7}{8}$ " squares (Diagram 3). Place a marked square on a Fabric D  $2\frac{7}{8}$ " square, right sides together. Sew a  $\frac{1}{4}$ " seam on each side of the marked line (Diagram 3); cut apart on marked line. Press open to make 2 pieced squares. They should measure  $2\frac{1}{2}$ " x  $2\frac{1}{2}$ " from edge to edge. Make a total of 102 red HST using Fabrics D and K combined with Fabrics E and J. Likewise, make 90 black HST using Fabrics F and G with Fabrics E and J (Diagram 4).



3. Refer to the Quilt Diagram throughout the assembly. Note that the top left quarter of the quilt is pieced the same as the bottom right quarter (which is rotated  $180^\circ$ ). Likewise, the top right quarter is pieced the same as the bottom left quarter.

Layout one quarter of the quilt on a large flat surface. Beginning in a corner, arrange (11) 4-Patch blocks (all alike) in a diagonal row. Position 12 HST (alternating 6 red and 6 black) beside the 4-Patch row. Continue adding the correct number of 4-Patch blocks, plain  $2\frac{1}{2}$ " squares, and HST in diagonal rows until you have completed the quarter. The red and black HST always alternate within the row.

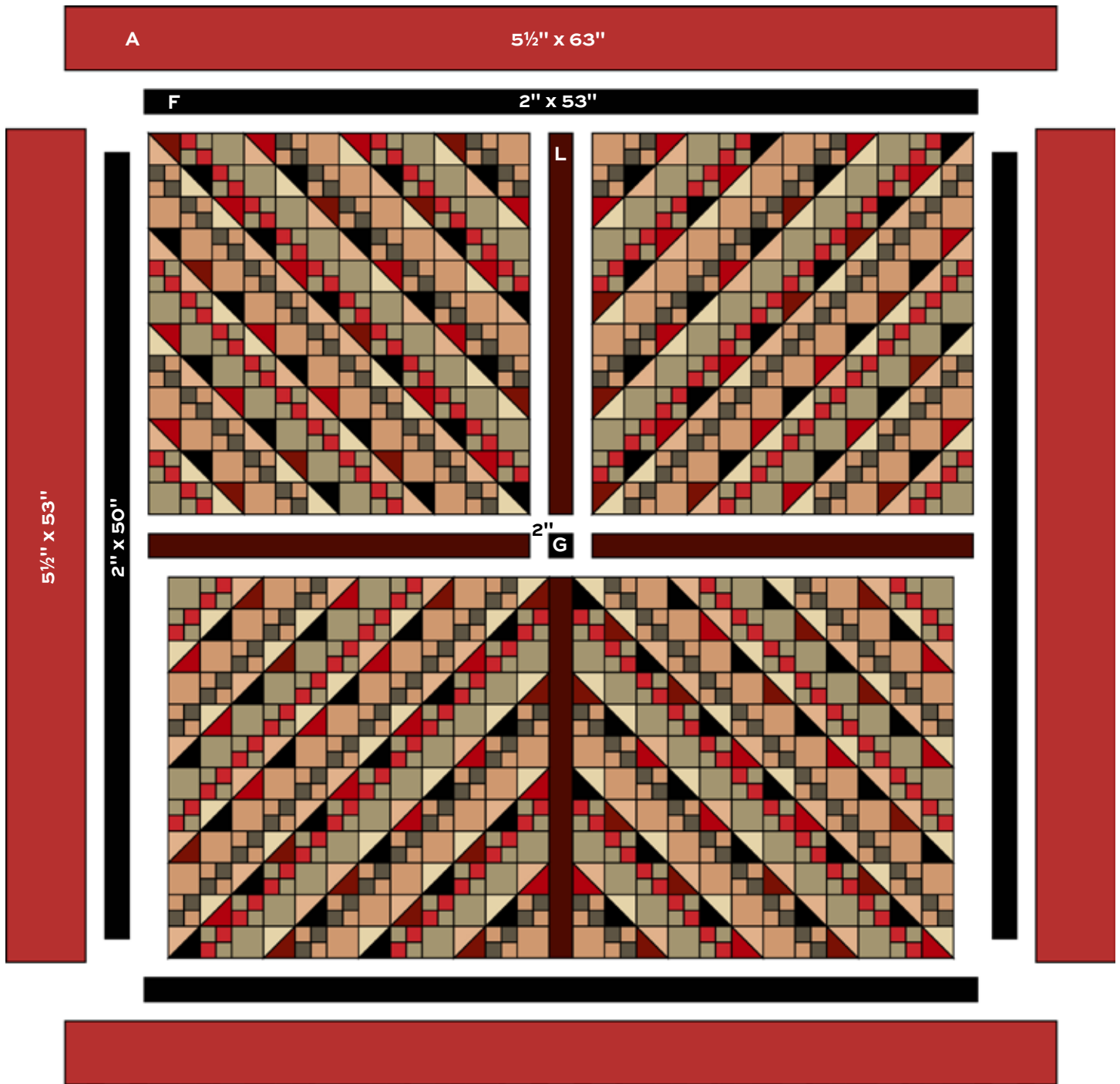
Once a quarter of the quilt is laid out, stand back to be certain that all patches are in the correct order and are turned correctly. There should be 12 units or squares in each of 12 horizontal rows. Sew the units and squares into horizontal rows. As you finish each row, put it back in place to be sure that the diagonal pattern is consistent. Join the rows.

4. Repeat Step 3 to make a second quarter like the one you just made. Make the 2 remaining quarters, noting that block placement is slightly different from the first 2 quarters.
5. Sew a Fabric L sash between the top left and top right quarters. Repeat for the bottom quarters. Sew the Fabric G  $2$ " square between 2 sashes. Sew the pieced sash in between the top and bottom halves of the quilt.
6. Sew the short Fabric F borders to sides. Sew long black borders to the top and bottom. Stitch Fabric A borders to the quilt in the same order.

## Finishing the Quilt

7. Layer the quilt with batting and backing and baste. Quilt in the ditch around borders, sashes, and block patches. Bind with Fabric K to finish the quilt.

# Carolina Crossing Quilt



Quilt Assembly

# Carolina JO MORTON



5311-B



5311-K



5311-R\*



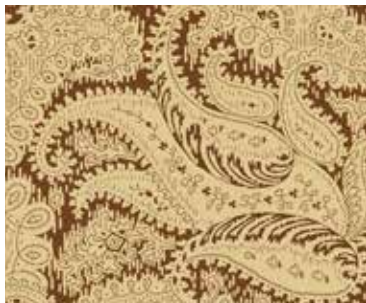
5313-B



5313-K



5312-K\*



5312-N



5312-R\*



5313-R\*



5314-B



5314-K



5314-R\*



5181-B



5181-O



5181-R\*



5316-B



5316-K\*



5316-N



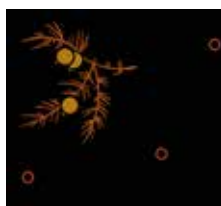
5316-O



5316-R\*



5315-B



5315-K



5315-KR\*



5317-B



5317-K\*



5317-O



5318-B



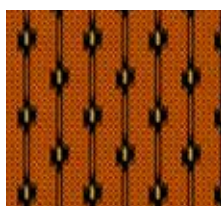
5318-K



5318-R\*



5319-N



5319-O



5319-R\*

\*Indicates fabrics used in quilt pattern. Fabrics shown are 50% of actual size.

Free Pattern Download Available

1384 Broadway, 24th Floor, New York, NY 10018

Tel. (800) 223-5678 • [andoverfabrics.com](http://andoverfabrics.com)