

FUSSY CUT STARS

**Riley Blake**
DESIGNS[®]



80 ½" × 80 ½"



= Confident Beginner



01/01/2025

FUSSY CUT STARS

FINISHED QUILT SIZE 80 ½" × 80 ½"

Please read all instructions before beginning this project. Yardage calculated using a 42" usable width of fabric.

Pattern designed by The RBD Designers.

GENERAL INSTRUCTIONS

Please check www.rileyblakedesigns.com/pattern-updates or scan the QR Code for any revisions before starting this project. This pattern requires a basic knowledge of quilting techniques and terminology. The quilt and block diagrams portrayed are virtual images. The layout and look of your project may differ when using actual fabric. It is not recommended to prewash fabric before cutting and assembling.



Always verify your panel size before beginning. If your panel measurements differ from those given in the pattern, trim to the desired size or use coping strips to alter the size of your panel. If coping strips are needed, add oversized, coordinating strips of fabric to the necessary edges of the panel, then trim to the size specified in the pattern.

WOF = Width of Fabric
RST = Right Sides Together
HST = Half Square Triangle

FABRIC REQUIREMENTS

All fabrics from the Peter Rabbit & Friends collection unless stated otherwise.

- (1) PD15868-PANEL Peter Rabbit and Friends Panel
- (1) 10-15860-42 10" Stacker

Additional Fabric:

- ⅞ yard C15863-CLOUD Toile
- 1 ⅓ yards CD15860-BLUE Main
- 2 ¼ yards C120-LECREME Confetti Cotton
- 1 ¼ yards C15865-BLUE Plaid (includes binding)

OTHER SUPPLIES

- Basic Sewing Supplies
- 2 ½ yards WB200-CHAMBRAY Shades (wide back backing)
- Batting

CUTTING INSTRUCTIONS

When cutting fabrics, use a straight edge ruler and rotary cutter. Measurements include ¼" seam allowance. Label, allocate, and organize all cuts as noted.

To make the quilt exactly as shown, refer to the cover and the Quilt Layout Diagram on page 4 to plan your placement of the Panel and 10" Stacker squares.



Peter Rabbit and Friends Panel

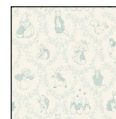
Fussy cut (16) Panel 8" × 8" squares of your choice centered over the motifs.* The excess white around each square will be hidden within the seam allowance.

**Note: If the panel motifs do not reach the edge of the required cuts, add coping strips first and then trim to the required sizes once the strips are added.*



10" Stacker

Choose (16) 10" squares for star points. Label as A and set aside. From (1) 10" square, cut (9) 2 ½" × 2 ½" squares for setting. Label as B.



Cloud Toile

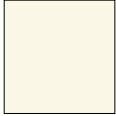
Cut (12) 2 ½" × WOF strips. Subcut:
(24) 2 ½" × 15 ½" rectangles. Label as C.



Blue Main

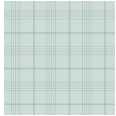
Cut (8) 5 ½" × WOF strips. Piece together end-to-end; subcut:
(2) 5 ½" × 80 ½" strips. Label as D.
(2) 5 ½" × 70 ½" strips. Label as E.

FUSSY CUT STARS



Le Creme Confetti Cotton

Cut (4) 10" x WOF strips. Subcut:
 (16) 10" x 10" squares. Label as F.
 Cut (8) 4 1/4" x WOF strips. Subcut:
 (64) 4 1/4" x 4 1/4" squares. Label as G.



Blue Plaid

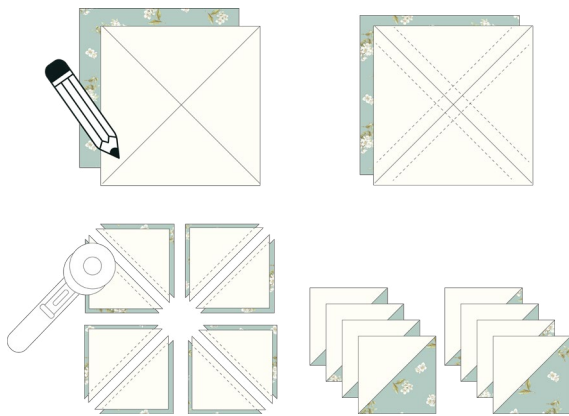
Cut (16) 2 1/2" x WOF strips. Set (9) aside for binding.
 Piece remaining strips together end-to-end; subcut:
 (2) 2 1/2" x 70 1/2" strips. Label as H.
 (2) 2 1/2" x 66 1/2" strips. Label as I.

SEWING TECHNIQUES

Sew all seams RST and with a 1/4" seam allowance unless stated otherwise. Refer to the quilt layout diagram for placement of the prints. Press seams as desired unless stated otherwise. Dimensions listed in steps are unfinished sizes. Please refer to the following general sewing technique as this method is referenced throughout the pattern in its abbreviated form.

8-AT-A-TIME HALF SQUARE TRIANGLE METHOD (HST)

Place (2) squares RST. Draw a diagonal line in both directions on the wrong side of one square. Sew 1/4" from both sides of each drawn line. Cut on the drawn lines and through the vertical and horizontal center to create (8) HSTs. Press toward the darker fabric. Trim HSTs to the indicated size.



BLOCK ASSEMBLY

1. Gather (1) Panel square, (1) **A**-square, (1) **F**-square, and (4) **G**-squares.
2. Use the 8-at-a-time HST method and (1) **A**-square (1) **F**-square to make (8) matching HST units. Trim each unit to measure 4 1/4" x 4 1/4".

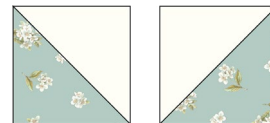
Make (8)



4 1/4" x 4 1/4"

3. Sew (2) HST units together as shown below to make (1) Star Point Unit. Repeat to make (4) total units.

Make (4)

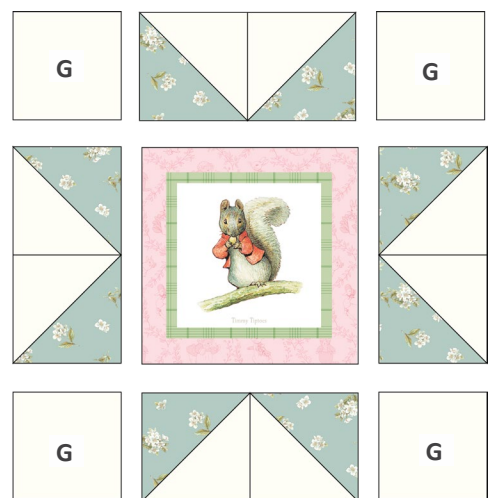


4 1/4" x 8"

4. Arrange (4) **G**-squares, (4) Star Point Units, and (1) Panel square as shown below. Sew the pieces and units together into rows. Next, sew the rows together to make (1) Star Block.

5. Repeat steps 1-4 to make (16) total blocks.

Make (16)

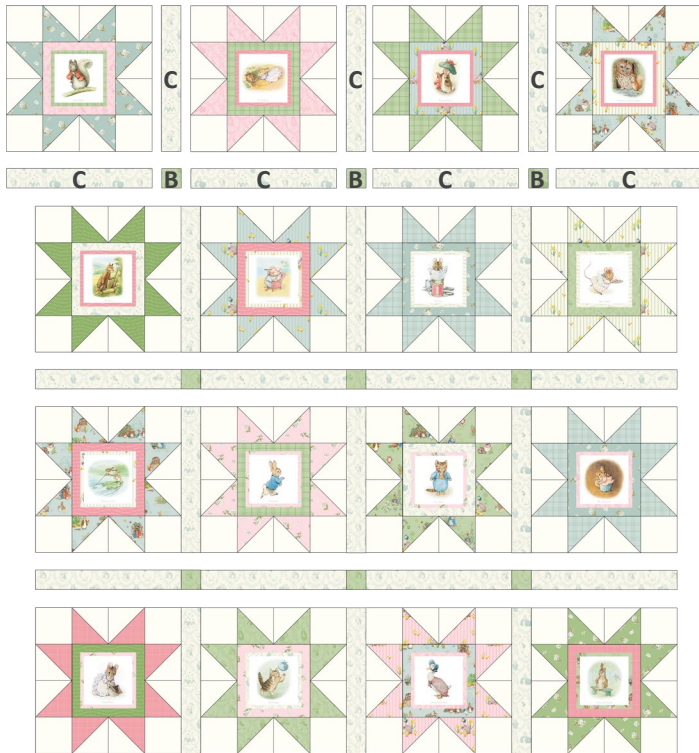


15 1/2" x 15 1/2"

FUSSY CUT STARS

QUILT ASSEMBLY

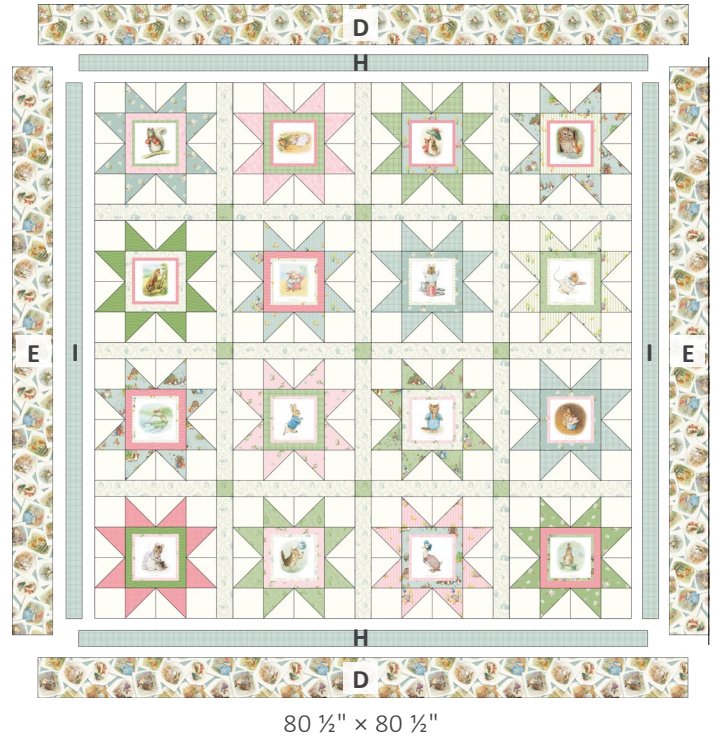
6. Arrange (16) Star Blocks, (24) **C**-rectangles, and (9) **B**-squares as shown below. Sew the blocks and pieces together into rows. Next, sew the rows together to make the quilt center.



66 ½" × 66 ½"

7. Sew (1) **I**-strip to each side of the quilt center. Next, sew (1) **H**-strip to the top and bottom. In the same manner, sew **E**-strips to the sides and **D**-strips to the top and bottom to complete the quilt top.

QUILT LAYOUT DIAGRAM



80 ½" × 80 ½"

FINISHING INSTRUCTIONS

8. Layer the quilt top, batting, and backing. Baste the quilt layers together and quilt as desired. Sew the Blue Plaid binding strips together end-to-end. Then bind the trimmed, finished quilt using your favorite binding method.

Enjoy and share your quilt using the hashtags:

[#peterrabbitandfriendsfabric](#), [#fussycutstarsquilt](#),
[#rileyblakedesigns](#), and [#iloverileyblake](#).