

Floral Chic

Floral Chic Table Runner designed by Wendy Sheppard



Approximate size: 75" x 21"



*Featuring fabrics from the Floral Chic fabric collection
by Dina June*

P&B Textiles • pbtex.com • p800-351-9087 • 208 Clock Tower Square, Portsmouth, RI 02871



Floral Chic

Fabric collection by Dina June
 Floral Chic Table Runner designed by Wendy Sheppard
 Finished size approximately: 75" x 21"

Yardage:

Fabric A	FCHI 5597 PA	1 panel
Fabric B	FCHI 5599 MU.....	1/4 yard
Fabric C	FCHI 5601 MU.....	1/4 yard
Fabric D	FCHI 5603 A.....	5/8 yard
Fabric E	FCHI 5603 E.....	1/4 yard
Fabric F	FCHI 5603 J	1/4 yard
Fabric G	FCHI 5603 NE	1/8 yard
Backing	FCHW 5605 MU 108"	3/4 yard
Batting	26" x 80"

Cutting Instructions:

Please read all instructions carefully before beginning. Strips are cut across the width of fabric **WOF** (perpendicular to selvages) unless otherwise stated. All seams are sewn with 1/4" seam unless otherwise stated. Label all pieces.

Fabric A:

a. Patch blocks

- Cut (4) 15 1/2" x 15 1/2" panel squares, centering designs.

Fabric B, C, E, F:

a. Sashing and border

- Cut (2) 3 1/2" x WOF strips. Subcut (13) 3 1/2" x 3 1/2" squares.

Fabric D:

a. Sashing and border

- Cut (2) 3 1/2" x WOF strips. Subcut (13) 3 1/2" x 3 1/2" squares.

b. Binding

- Cut (6) 2 1/4" x WOF strips. Piece strips to make a binding strip

Fabric G:

a. Sashing and Border

- Cut (1) 3 1/2" x WOF strip. Subcut (10) 3 1/2" x 3 1/2" squares.

Piecing Instructions:

1. Arrange and sew together (5) 3 1/2" x 3 1/2" squares to make a row unit in the order of the following **Fabrics: B, D, E, C, F**.



Make a total of (13) row units.
 Diagram 1

2. Sew together (4) 15 1/2" x 15 1/2" **Fabric A** patch blocks, alternating with step 1 units to make a pieced section.



Diagram 2

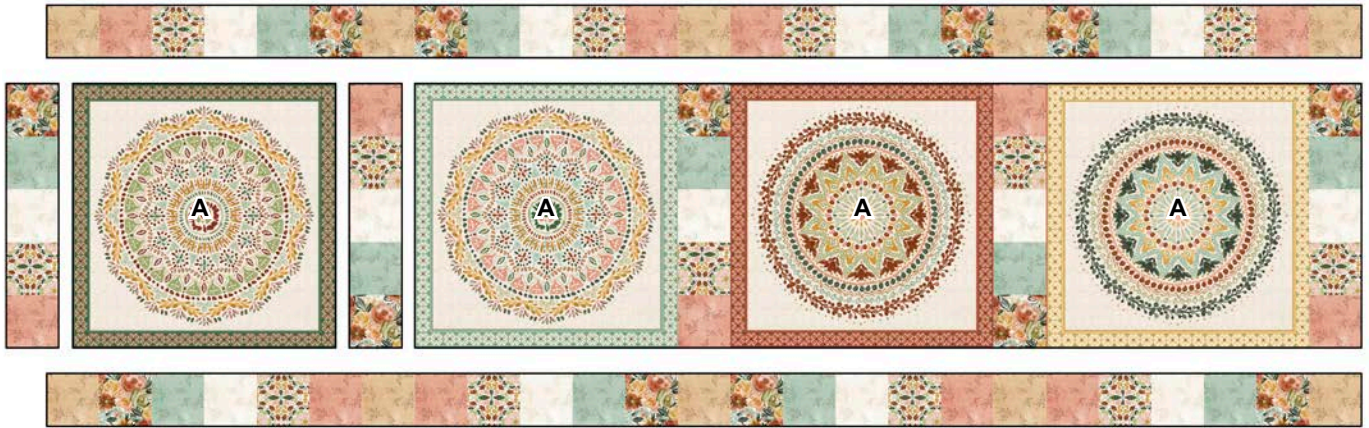
3. Sew together (4) step 1 units, alternating with (5) 3 1/2" x 3 1/2" **Fabric G** squares to make a row unit. Make a total of (2) row units and sew to the opposite long side of step 2 section to complete runner top.



Diagram 3

Finishing:

1. With the backing fabric laying taut, place batting and runner top to form quilt sandwich. Baste sandwich.
2. Quilt as desired.
3. Bind to finish runner.



Quilt Diagram

Floral Chic

Fabric Collection by
Dina June



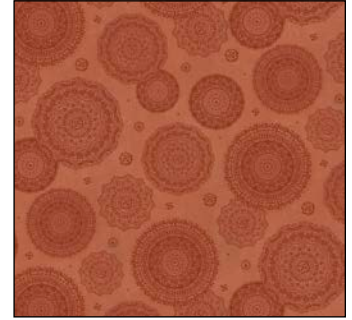
FCHI 5597 PA
Fabric A



FCHI 5598 MU



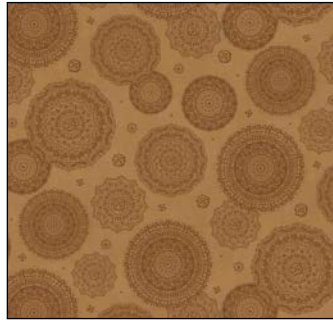
FCHI 5599 MU
Fabric B



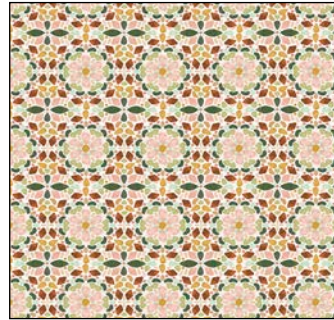
FCHI 5600 JJ



FCHI 5600 MU



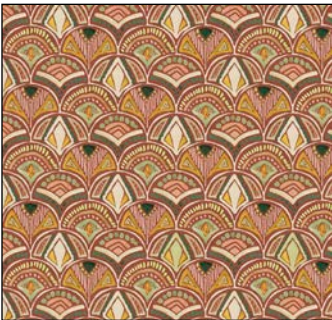
FCHI 5600 Z



FCHI 5601 MU
Fabric C



FCHI 5602 E



FCHI 5602 Z



FCHI 5603 A *
Fabric D



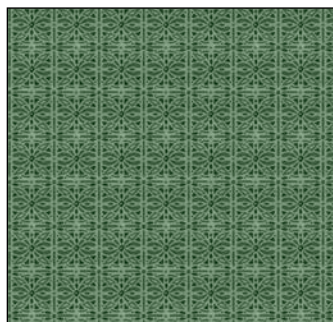
FCHI 5603 E
Fabric E



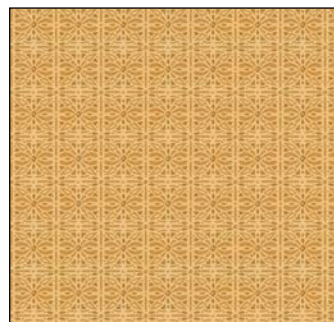
FCHI 5603 J
Fabric F



FCHI 5603 NE



FCHI 5604 A



FCHI 5604 AU



FCHW 5605 MU108 †
Backing

Quilt Fabrics in Bold

* Binding

† Backing

P&B Textiles • pbtex.com • p800-351-9087 • 208 Clock Tower Square, Portsmouth, RI 02871

