

HOLIDAY RIBBONS RED/GREEN


Riley Blake
DESIGNS®



67" x 95 3/8"

STITCHER'S
Flannel

BY VICKI MCCARTY



= Intermediate

10/01/2024

HOLIDAY RIBBONS RED/GREEN

FINISHED QUILT SIZE 67" × 95 ⅜"

Please read all instructions before beginning this project. Yardage calculated using a 42" usable width of fabric.

GENERAL INSTRUCTIONS

Please check www.rileyblakedesigns.com/pattern-updates or scan the QR code for any revisions before starting this project. This pattern requires a basic knowledge of quilting techniques and terminology. The quilt and block diagrams portrayed are virtual images. The layout and look of your project may differ when using actual fabric. It is not recommended to prewash fabric before cutting and assembling.



WOF = Width of Fabric
RST = Right Sides Together
HST = Half Square Triangle

FABRIC REQUIREMENTS

All fabrics from the Stitcher's Flannel collection unless stated otherwise.

10" square F15550-CREAM Dots
⅓ yard F15550-OLIVE Dots
¼ yard F15554-RED Railroad Stripe
⅓ yard F15550-RED Dots
½ yard F15553-GREEN Plaid
1 yard F15551-OLIVE Shadow Stripe
1 ⅓ yards F15555-CREAM Houndstooth
1 ½ yards F15555-RED Houndstooth
1 ⅓ yards F15551-RED Shadow Stripe
1 ⅓ yard F15552-BERRY Ticking (includes binding)

OTHER SUPPLIES

Basic Sewing Supplies
2 ⅓ yards Wide Back backing fabric of your choice
Batting

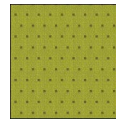
CUTTING INSTRUCTIONS

When cutting fabrics, use a straight edge ruler and rotary cutter. Measurements include ¼" seam allowance. Label, allocate, and organize all cuts as noted.



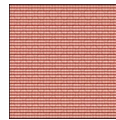
Cream Dots

Cut (4) 3" × 3" squares. Label as A.



Olive Dots

Cut (1) 3" × WOF strip; subcut:
(12) 3" × 3" squares. Label as B.



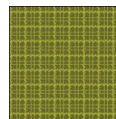
Red Railroad Stripe

Cut (1) 4 ½" × WOF strip; subcut:
(8) 4 ½" × 4 ½" squares. Label as C.



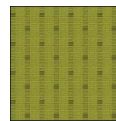
Red Dots

Cut (1) 5" × WOF strip; subcut:
(8) 5" × 5" squares. Label as D.
Cut (1) 4 ½" × WOF strip; subcut:
(8) 4 ½" × 4 ½" squares. Label as E.



Green Plaid

Cut (8) 2" × WOF strips. Piece together end-to-end; subcut:
(2) 2" × 85 ⅜" strips. Label as F.
(2) 2" × 60" strips. Label as G.



Olive Shadow Stripe

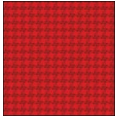
Cut (3) 5" × WOF strips; subcut:
(24) 5" × 5" squares. Label as H.
Cut (4) 4 ½" × WOF strips; subcut:
(32) 4 ½" × 4 ½" squares. Label as I.



Cream Houndstooth

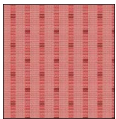
Cut (4) 5" × WOF strips; subcut:
(32) 5" × 5" squares. Label as J.
Cut (4) 4 ½" × WOF strips; subcut:
(32) 4 ½" × 4 ½" squares. Label as K.

HOLIDAY RIBBONS RED/GREEN



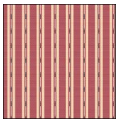
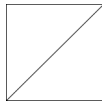
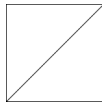
Red Houndstooth

- Cut (3) 4 1/2" x WOF strips; subcut:
 (24) 4 1/2" x 4 1/2" squares. Label as L.
 Cut (8) 4" x WOF strips. Piece together
 end-to-end; subcut:
 (2) 4" x 88 3/8" strips. Label as M.
 (2) 4" x 67" strips. Label as N.
 Cut (2) 3" x WOF strips; subcut:
 (16) 3" x 3" squares. Label as O.



Red Shadow Stripe

- Cut (2) 20 7/8" x WOF strips; subcut:
 (3) 20 7/8" x 20 7/8" squares. Cut
 each square in half once
 diagonally. Label as P.
 Cut (1) 15" x WOF strip; subcut:
 (2) 15" x 15" squares. Cut each
 square in half once
 diagonally. Label as Q.



Berry Ticking

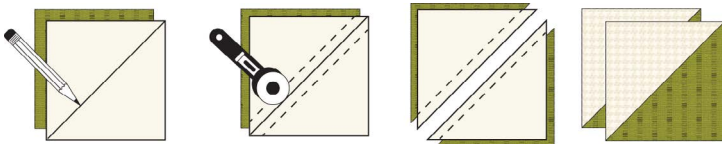
- Cut (3) 4 1/2" x WOF strips; subcut:
 (24) 4 1/2" x 4 1/2" squares. Label as L.
 Cut (9) 2 1/2" x WOF strips. Set aside for binding.

SEWING TECHNIQUES

Sew all seams RST and with a 1/4" seam allowance unless stated otherwise. Refer to the quilt layout diagram for placement of the prints. Press seams as desired unless stated otherwise. Dimensions listed in steps are unfinished sizes. Please refer to the following general sewing technique as this method is referenced throughout the pattern in its abbreviated form.

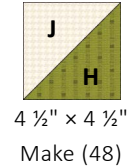
2-AT-A-TIME HALF SQUARE TRIANGLE METHOD (HST)

Place (2) squares RST. Draw a diagonal line on the wrong side of (1) square. Stitch 1/4" on each side of the drawn line. Cut on the drawn line to create (2) HSTs. Press toward the darker fabric. Trim HSTs to the indicated size.

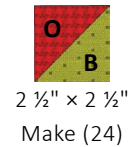


BLOCK ASSEMBLY

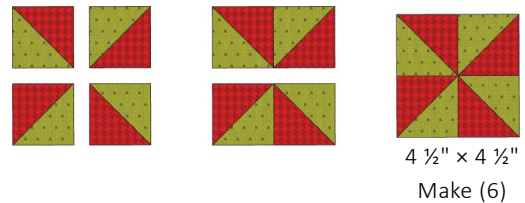
- Gather (24) **H**-squares and (24) **J**-squares and use the HST method to create the unit shown below. Trim to 4 1/2" x 4 1/2". Make (48) total large HST units.



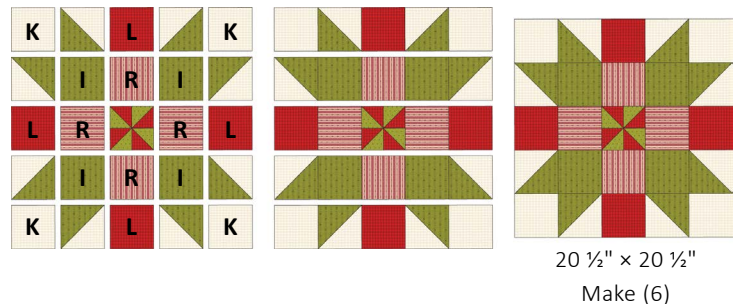
- Gather (12) **B**-squares and (12) **O**-squares and use the HST method to create the unit shown below. Trim to 2 1/2" x 2 1/2". Make (24) total small HST units.



- Arrange and sew (4) small HST units as shown. Make (6) total Pinwheel Units that each measure 4 1/2" x 4 1/2".

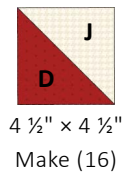


- Arrange (1) Pinwheel Unit, (8) large HST units, (4) **I**-squares, (4) **R**-squares, (4) **K**-squares, and (4) **L**-squares as shown, paying close attention to the orientation of the **R**-squares. Sew the units together in rows, then sew the rows together. Repeat to make (6) total A-blocks that each measure 20 1/2" x 20 1/2".

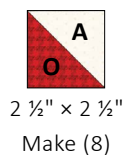


HOLIDAY RIBBONS RED/GREEN

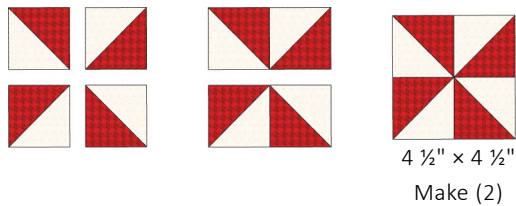
5. Gather (8) **D**-squares and (8) **J**-squares and use the HST method to create the unit shown below. Trim to $4\frac{1}{2}'' \times 4\frac{1}{2}''$. Make (16) total large HST units.



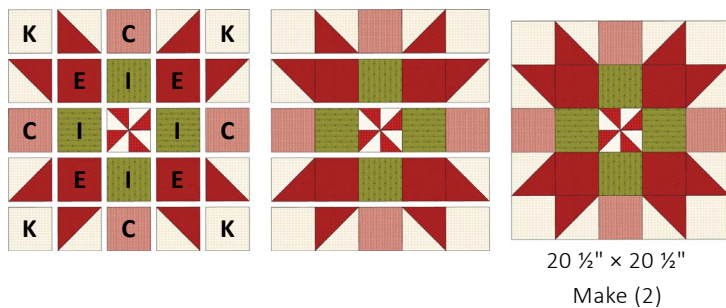
6. Gather (4) **A**-squares and (4) **O**-squares and use the HST method to create the unit shown below. Trim to $2\frac{1}{2}'' \times 2\frac{1}{2}''$. Make (8) total small HST units.



7. Arrange and sew (4) small HST units as shown. Make (2) total Pinwheel Units that each measure $4\frac{1}{2}'' \times 4\frac{1}{2}''$.

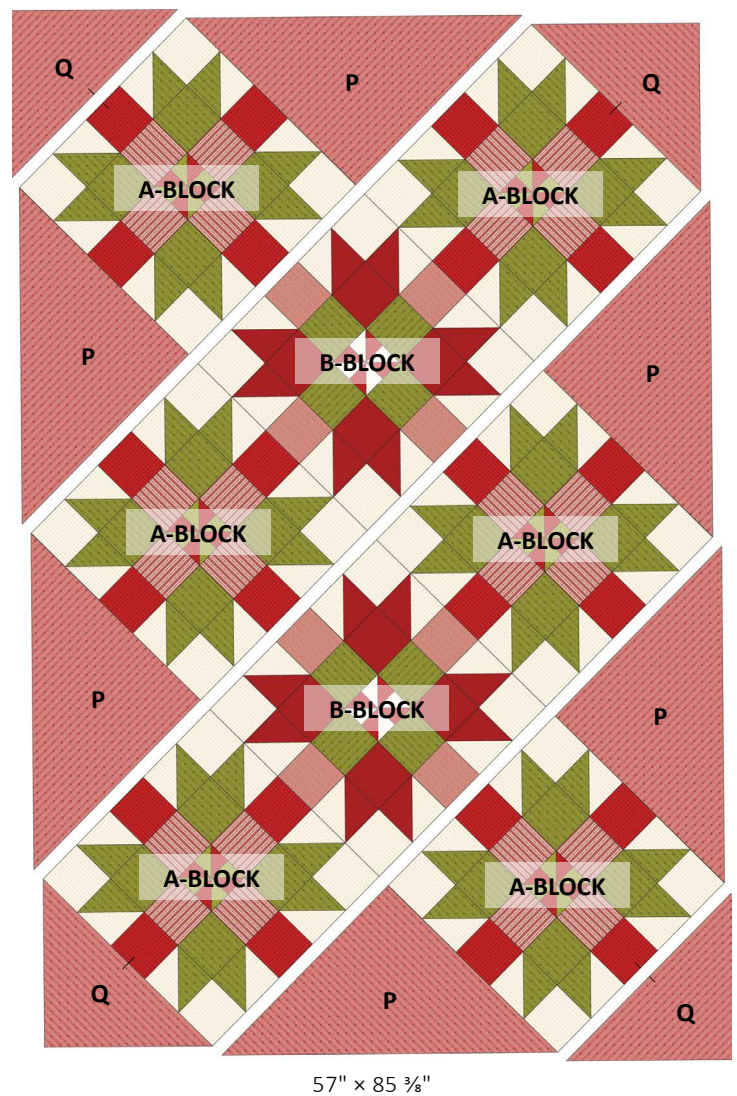


8. Arrange (1) Pinwheel Unit, (8) large HST units, (4) **C**-squares, (4) **E**-squares, (4) **I**-squares, and (4) **K**-squares as shown, paying close attention to the orientation of the **I**-squares. Sew the units together in rows, then sew the rows together. Repeat to make (2) total B-blocks that each measure $20\frac{1}{2}'' \times 20\frac{1}{2}''$.



QUILT ASSEMBLY

9. Arrange the blocks as shown in the diagram below. Fold each **Q**-triangle in half along the longest edge and press to mark the center. Fold the **A**-blocks next to the **Q**-triangles in half along the edge meeting the **Q**-triangles and press to mark the center. When sewing into rows, match the center marks of the **Q**-triangles with the blocks and the straight edges of the **P**-triangles with the block edges. Sew the units into diagonal rows, then sew the rows together to form the quilt top which should measure $57'' \times 85\frac{3}{8}''$. Trim any dog ears as needed.



HOLIDAY RIBBONS RED/GREEN

10. Sew the **F**-strips to the sides of the quilt center. Sew the **G**-strips to the top and bottom of the quilt center.

11. Sew the **M**-strips to the sides. Sew the **N**-strips to the top and bottom. The quilt top should measure 67" x 95 ³/₈".

QUILT LAYOUT DIAGRAM



FINISHING INSTRUCTIONS

12. Finish the quilt by layering the quilt top, batting, and backing. Baste the quilt layers together and quilt as desired. Sew the Berry Ticking binding strips together end-to-end. Then bind the trimmed, finished quilt using your favorite binding method.

Enjoy and share your quilt using the hashtags [#stitchersflannelfabric](#), [#holidayribbonsquilt](#), [#rileyblakedesigns](#), and [#iloverileyblake](#).