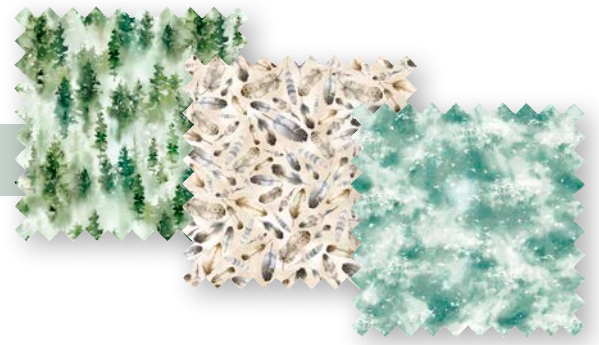


# Misty Vistas

Misty Vistas Quilt design by Matthew Pridemore



Quilt size: approximately 51" x 59"



*Featuring fabrics from Misty Vistas  
by Katrina Pete*

P&B Textiles • pbtex.com • p800-351-9087 • 208 Clock Tower Square, Portsmouth, RI 02871



# Misty Vistas

Fabric Collection by Katrina Pete for P&B Textiles  
Quilt designed by Matthew Pridemore of The Whimsical Workshop  
Finished Quilt Size: approx. 51" x 59"

## Quilt Yardages:

Fabric A:	MVIS 5540 PA	.....1 panel
Fabric B:	COSM 5130 NE	..... 7/8 yard
Fabric C:	SUE5 301 HG	..... 7/8 yard
Fabric D:	MVIS 5546 LT	..... 1/2 yard
Fabric E:	MVIS 5543 DG	..... 1 yard
Fabric F:	MVIS 5547 WZ	..... 1/2 yard
Fabric G:	MVIS 5541 MU	..... 3/4 yard
Backing:	MVIS 5541 MU	..... 3 3/4 yards
Batting		..... 59" x 67"

## Cutting Instructions:

Please read all instructions carefully before beginning. Strips are cut across the width of fabric (perpendicular to selvages) unless otherwise stated. All seams are sewn with 1/4" seam unless otherwise stated. Label all pieces.

### From Fabric A:

1. Fussy cut one 17 1/2" x 22 1/2" rectangle, centered on the large block. (Blocks)
2. Fussy cut six 9 1/2" x 7 1/2" rectangles, centered on small blocks. (Blocks)
3. Fussy cut four 10 1/2" x 2 1/2" strips, centered on the tree strips. (Blocks)

### From Fabric B:

1. Cut one 2 1/2" strip; sub-cut two 2 1/2" x 4 1/2" strips. (Blocks)
2. Cut two 2" strips; subcut two 2" x 22 1/2" strips. (Blocks)
3. Cut one 2" strip; sub-cut two 2" x 20 1/2" strips.
4. Cut four 1 1/2" strips; subcut four 1 1/2" x 22 1/2" strips and four 1 1/2" x 9" strips. (Blocks)
5. Cut three 1 1/2" strips. Sew the strips together end to end with diagonal seams and cut two 1 1/2" x 51 1/2" strips. (Border)
6. Cut three 1 1/2" strips. Sew the strips together end to end with diagonal seams and cut two 1 1/2" x 45 1/2" strips. (Border)

### From Fabric C:

1. Cut three 1 1/2" strips; sub-cut twelve 1 1/2" x 7 1/2" strips. (Blocks)
2. Cut four 1 1/2" strips; sub-cut twelve 1 1/2" x 11 1/2" strips. (Blocks)
3. Cut six 2 1/2" strips. (Binding)

### From Fabric D:

1. Cut one 8 1/2" strip; sub-cut twelve 8 1/2" x 1 1/2" strips and five 1 1/2" x 12 1/2" strips. (Blocks)
2. Cut three 1 1/2" strips; subcut seven 1 1/2" x 12 1/2" strips. (Blocks)

### From Fabric E:

1. Cut three 3 1/2" strips. Sew the strips together end to end with diagonal seams and cut two 3 1/2" x 53 1/2" strips. (Border)
2. Cut three 3 1/2" strips. Sew the strips together end to end with diagonal seams and cut two 3 1/2" x 51 1/2" strips. (Border)
3. Cut four 1 1/2" strips; subcut four 1 1/2" x 40 1/2" strips. (Blocks)
4. Cut two 1 1/2" strips; sub-cut eight 1 1/2" x 10 1/2" strips. (Blocks)

### From Fabric F:

1. Cut three 2" strips. Sew the strips together end to end with diagonal seams and cut two 2" x 48 1/2" strips. (Border)
2. Cut three 2" strips. Sew the strips together end to end with diagonal seams and cut two 2" x 43 1/2" strips. (Border)

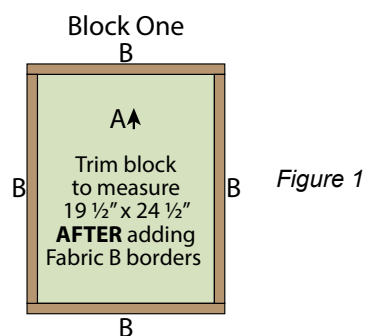
### From Fabric G:

1. Cut one 22 1/2" strip, sub-cut two 7" x 22 1/2" strips. (Blocks)

## Piecing Instructions:

The arrows in figures represent the fabric print direction. Pay attention to the fabric and unit orientations while assembling the various components.

1. Sew one 2" x 22 1/2" B strip to each side of the 17 1/2 x 22 1/2" A rectangle. Sew one 2" x 20 1/2" B strip to the top and to the bottom of the A rectangle to make one Block One rectangle (Fig. 1). Trim the block to measure 19 1/2" x 24 1/2".



- Sew one  $1\frac{1}{2}'' \times 22\frac{1}{2}''$  B strip to each side of one  $7'' \times 22\frac{1}{2}''$  G strip. Sew one  $1\frac{1}{2}'' \times 9''$  B strip to the top and to the bottom of the G strip to make one  $9'' \times 24\frac{1}{2}''$  Block Two rectangle (Fig. 2). Repeat to make a second Block Two rectangle.

Block Two

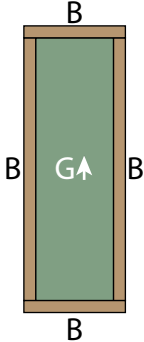


Figure 2  
**Make 2 blocks**

- Sew one  $2\frac{1}{2}'' \times 10\frac{1}{2}''$  A strip to the top and to the bottom of one  $2\frac{1}{2}'' \times 4\frac{1}{2}''$  B strip to make one  $2\frac{1}{2}'' \times 24\frac{1}{2}''$  Block Three strip (Fig. 3). Repeat to make a second Block Three strip.

Block Three



Figure 3  
**Make 2 blocks**

- Sew one Block Three strip to each side of the Block One rectangle lengthwise. Sew one Block Two rectangle to each side of the newly sewn block lengthwise to make the  $40\frac{1}{2}'' \times 24\frac{1}{2}''$  Center Block (Fig. 4).

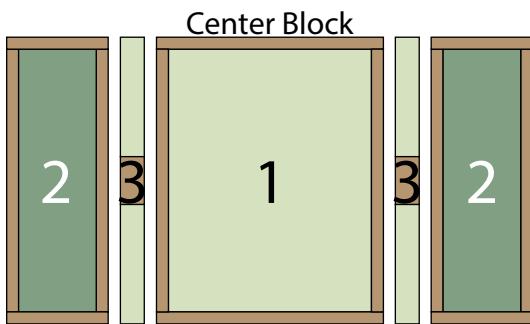
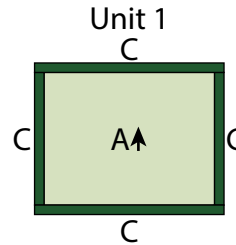


Figure 4

- Sew one  $1\frac{1}{2}'' \times 7\frac{1}{2}''$  C strip to each side of one  $9\frac{1}{2}'' \times 7\frac{1}{2}''$  A rectangle. Sew one  $1\frac{1}{2}'' \times 11\frac{1}{2}''$  C strip to the top and to the bottom of the A rectangle to make one Unit 1 rectangle (Fig. 5). **Trim the unit to measure  $10\frac{1}{2}'' \times 8\frac{1}{2}''$ .** Repeat to make six Unit 1 rectangles total.



Trim block to measure  $10\frac{1}{2}'' \times 8\frac{1}{2}''$  **AFTER** adding Fabric B borders

Figure 5  
**Make 6 units**

- Sew one  $1\frac{1}{2}'' \times 8\frac{1}{2}''$  D strip to each side of one Unit 1 rectangle. Sew one  $1\frac{1}{2}'' \times 12\frac{1}{2}''$  D strip to the top and to the bottom of the Unit 1 rectangle to make one  $12\frac{1}{2}'' \times 10\frac{1}{2}''$  Unit 2 rectangle (Fig. 6). Repeat to make six Unit 2 rectangles total.

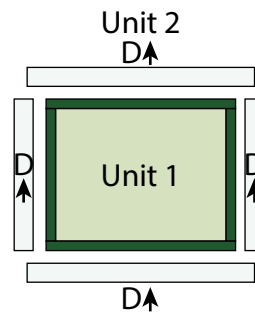


Figure 6  
**Make 6 units**

- Sew together one Unit 2 rectangle, one  $1\frac{1}{2}'' \times 10\frac{1}{2}''$  E strip, one Unit 2 strip, one  $1\frac{1}{2}'' \times 10\frac{1}{2}''$  E strip and one Unit 2 strip, in that order from left to right, to make one Unit 3 strip (Fig. 7). Repeat to make a second Unit 3 strip.

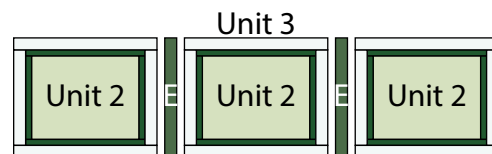


Figure 7  
**Make 2 units**

- Sew one  $1\frac{1}{2}'' \times 10\frac{1}{2}''$  E strip to each end of one Unit 3 strip. Sew one  $1\frac{1}{2}'' \times 40\frac{1}{2}''$  E strip to the top and to the bottom of the Unit 3 strip to make one  $40\frac{1}{2}'' \times 12\frac{1}{2}''$  Block Four strip (Fig. 8). Repeat to make a second Block Four strip.

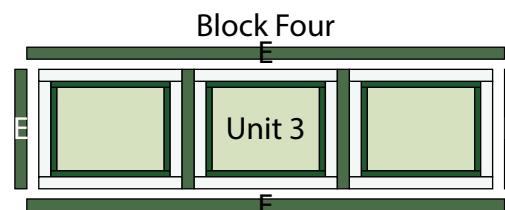


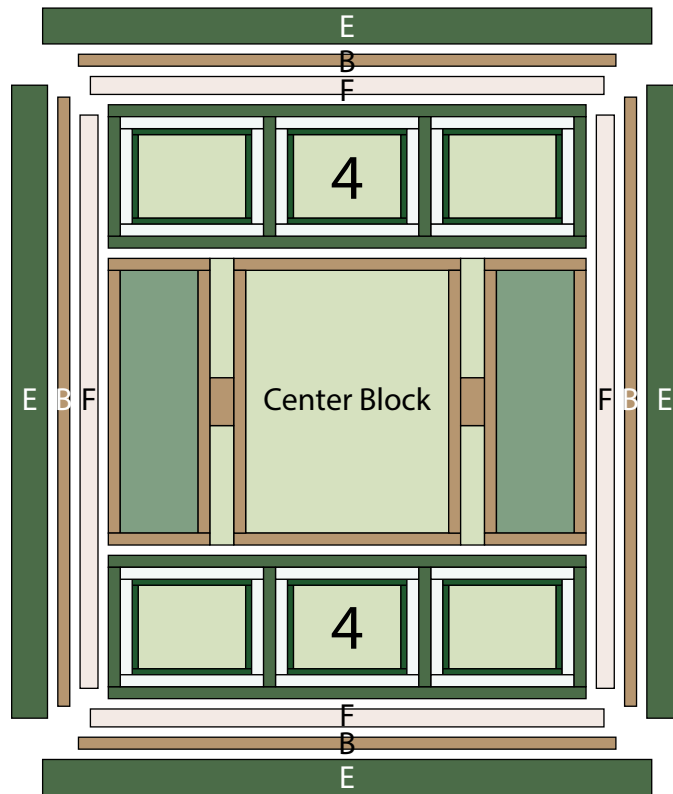
Figure 8  
**Make 2 blocks**

*Quilt Assembly:* Refer to the Quilt Diagram

9. Sew one Block Four strip to the top and to the bottom of the Center Block lengthwise.
10. Sew one 2" x 48 1/2" F strip to each side of the Center Block. Sew one 2" x 43 1/2" F strip to the top and to the bottom of the Center Block.
11. Sew one 1 1/2" x 51 1/2" B strip to each side of the Center Block. Sew one 1 1/2" x 45 1/2" B strip to the top and to the bottom of the Center Block.
12. Sew one 3 1/2" x 53 1/2" E strip to each side of the Center Block. Sew one 3 1/2" x 51 1/2" E strip to the top and to the bottom of the Center Block to make the quilt top.

*Finishing:*

13. Prepare backing using two 67" widths with 1/2" seams. Press seams open. Trim backing to 59" x 67".
14. Layer quilt, batting and backing. Baste layers together.
15. Quilt as desired.
16. Trim layers even with quilt top squaring corners.
17. Join six 2 1/2" C binding strips with diagonal seams. Press seams open. Attach binding using your favorite method.
18. Make a label and sew to the back of the quilt.



*Quilt Diagram*

# Misty Vistas

Fabric Collection by  
Katrina Pete



**MVIS 5540 PA**  
*Fabric A*



**MVIS 5541 MU †**  
*Fabric G*



**MVIS 5542 G**



**MVIS 5543 DG**  
*Fabric E*



**MVIS 5543 W**



**MVIS 5544 G**



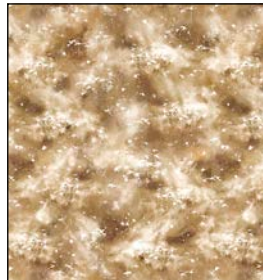
**MVIS 5544 NE**



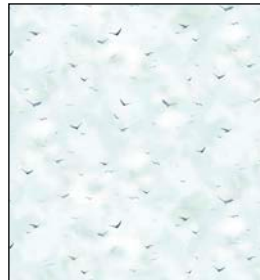
**MVIS 5545 G**



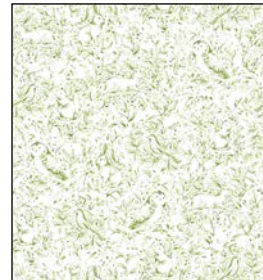
**MVIS 5545 T**



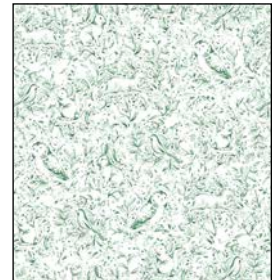
**MVIS 5545 Z**



**MVIS 5546 LT**  
*Fabric D*



**MVIS 5547 WA**



**MVIS 5547 WG**



**MVIS 5547 WZ**  
*Fabric F*



**MVIS 5548 MU**



**MVIW 5549 MU(108)**



**SUE5 301 HG \***  
*Fabric C*



**COSM 5130 NE**  
*Fabric B*

**Quilt Fabrics in Bold**  
\* Binding  
† Includes Backing

