

# STILL LIFE

Still Life Blooms Quilt designed by Jamie Kalvestran



Approximate size: 55" x 48 1/2"

*Featuring fabrics from the Still Life fabric collection  
by Jamie Kalvestran*

P&B Textiles • pbtex.com • p800-351-9087 • 208 Clock Tower Square, Portsmouth, RI 02871



# STILL LIFE

Fabric collection by Jamie Kalvestran  
Still Life Blooms Quilt designed by Jamie Kalvestran  
Finished size approximately: 55" x 48 1/2"

## Yardage:

<b>Fabric A</b>	SLIF 5619 PA	..... 1 panel
<b>Fabric B*</b>	SLIF 5620 MU	..... 1 row (3 blocks)
<b>Fabric C</b>	SLIF 5621 MU	..... 1/2 yard
<b>Fabric D</b>	SLIF 5623 LMU	..... 3/8 yard
<b>Fabric E</b>	SLIF 5626 K	..... 3/4 yard
<b>Fabric F</b>	SLIF 5627 MU	..... 5/8 yard
<b>Fabric G</b>	SLIF 5630 O	..... 1/4 yard
<b>Backing</b>	SLIF 5622 IB	..... 3 1/8 yards
<b>Batting:</b>		..... 63" x 56"

\* Note: Rows alternate in color arrangement.

## Cutting Instructions:

Please read all instructions carefully before beginning. Strips are cut across the width of fabric **WOF** (perpendicular to selvages) unless otherwise stated. All seams are sewn with 1/4" seam unless otherwise stated. Label all pieces.

### Fabric A:

- Cut panel 22 1/2" x 41 1/2", keeping design centered. **(Quilt Center)**

### Fabric B:

- Cut three 9 1/2" square blocks, keeping design centered. **(Blocks)**

### Fabric C:

- Cut three 4" strips; subcut three 4" x 41 1/2" strips. **(Vertical Sashing)**

### Fabric D:

- Cut four 1" strips; subcut six 1" x 9 1/2" strips and six 1" x 10 1/2" strips. **(Blocks)**
- Cut five 1 1/2" strips. Sew strips together end to end with diagonal seams. Trim seams to 1/4" and press open. From this pieced strip, cut two 1 1/2" x 43 1/2" strips and two 1 1/2" x 52" strips. **(2nd Border)**

### Fabric E:

- Cut four 1 1/2" strips; subcut six 1 1/2" x 10 1/2" strips and six 1 1/2" x 12 1/2" strips. **(Blocks)**
- Cut one 2" strip; subcut four 2" x 3" rectangles. **(Block Sashing)**
- Cut two 2" strips; subcut two 2" x 41 1/2" strips. **(Panel Frame)**
- Cut six 2" strips. Sew strips together end to end with diagonal seams. Trim seams to 1/4" and press open. From this pieced strip, cut two 2" x 45 1/2" strips and two 2" x 55" strips. **(Outer Border)**

### Fabric F:

- Cut six 2 1/2" strips. **(Binding)**
- Cut one 3" strip; subcut two 3" x 9 1/2" rectangles. **(Block Sashing)**

### Fabric G:

- Cut five 1 1/2" strips. Sew strips together end to end with diagonal seams. Trim seams to 1/4" and press open. From this pieced strip, cut two 1 1/2" x 41 1/2" strips and two 1 1/2" x 50" strips. **(Inner Border)**

## Piecing Instructions:

### Blocks

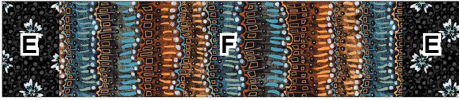
1. Sew one 1" x 9 1/2" (D) strip to both sides of one 9 1/2" (B) square. Press toward (D). Sew one 1" x 10 1/2" (D) strip to the top and bottom of the square. Press toward (D).
2. Sew one 1 1/2" x 10 1/2" (E) strip to both sides of the block. Press toward (E). Sew one 1 1/2" x 12 1/2" (E) strip to the top and bottom of the block. Press toward (E).
3. Repeat Steps 1 & 2 to make three unique Framed Blocks.



Make (3) unique blocks = 12 1/2" x 12 1/2" unfinished.

## Vertical Block Row

1. Sew one 2" x 3" (E) rectangle to both ends of one 3" x 9 1/2" (F) rectangle. Press toward (E). Repeat to make two Block Sashing Units.



Make (2) = 3" x 12 1/2" unfinished.

2. Refer to Quilt Diagram to sew three Framed Blocks alternately with two Block Sashing Units. Press toward the sashing units. This row should measure 12 1/2" x 41 1/2" unfinished.

## Quilt Assembly

1. Sew one 2" x 41 1/2" (E) strip to both sides of the Panel. Press toward (E).
2. Refer to Quilt Diagram to sew in order (left to right): one 4" x 41 1/2" (C) strip, Framed Panel, one 4" x 41 1/2" (C) strip, Vertical Block Row, and one 4" x 41 1/2" (C) strip. Press toward (C) strips.

3. Sew one 1 1/2" x 41 1/2" (G) strip to both sides of the Quilt Center; press. Sew one 1 1/2" x 50" (G) strip to the top and bottom of the Quilt Center; press.
4. Sew one 1 1/2" x 43 1/2" (D) strip to both sides of the Quilt Center; press. Sew one 1 1/2" x 52" (D) strip to the top and bottom of the Quilt Center; press.
5. Sew one 2" x 45 1/2" (E) strip to both sides of the Quilt Center; press. Sew one 1 1/2" x 55" (E) strip to the top and bottom of the Quilt Center; press.

## Finishing:

1. Prepare backing using two widths of fabric with a vertical seam. Press seam open. Trim backing to 63" x 56".
2. Layer backing, batting, and quilt top. Baste and quilt as desired.
3. Trim layers even with quilt top squaring corners.
4. Prepare binding using 2 1/2" (F) strips with diagonal seams. Trim seams to 1/4" and press open. Sew binding to quilt using your preferred method.



Quilt Diagram



**SLIF 5619 PA**  
*Fabric A*



**SLIF 5620 MU**  
*Fabric B*



**SLIF 5622 IB †**  
*Backing*



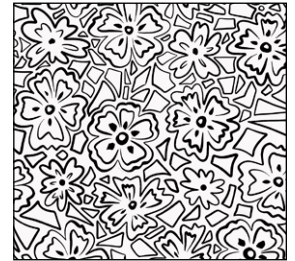
**SLIF 5623 LMU**  
*Fabric D*



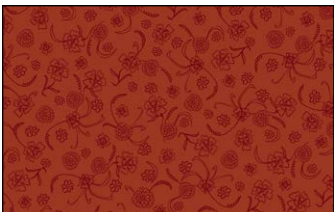
**SLIF 5621 MU**  
*Fabric C*



**SLIF 5624 KB**



**SLIF 5624 WK**



**SLIF 5625 I**



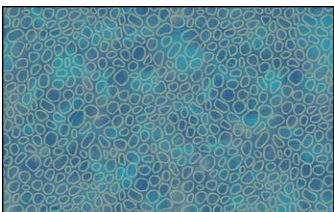
**SLIF 5625 W**



**SLIF 5626 K**  
*Fabric E*



**SLIF 5627 MU \***  
*Fabric F*



**SLIF 5628 B**



**SLIF 5628 I**



**SLIF 5629 O**



**SLIF5629 SB**



**SLIF 5630 M**



**SLIF 5630 O**  
*Fabric G*



**SLIF 5631 O**



**SLIF 5631 T**

**Quilt Fabrics in Bold**

\* Binding

† Backing