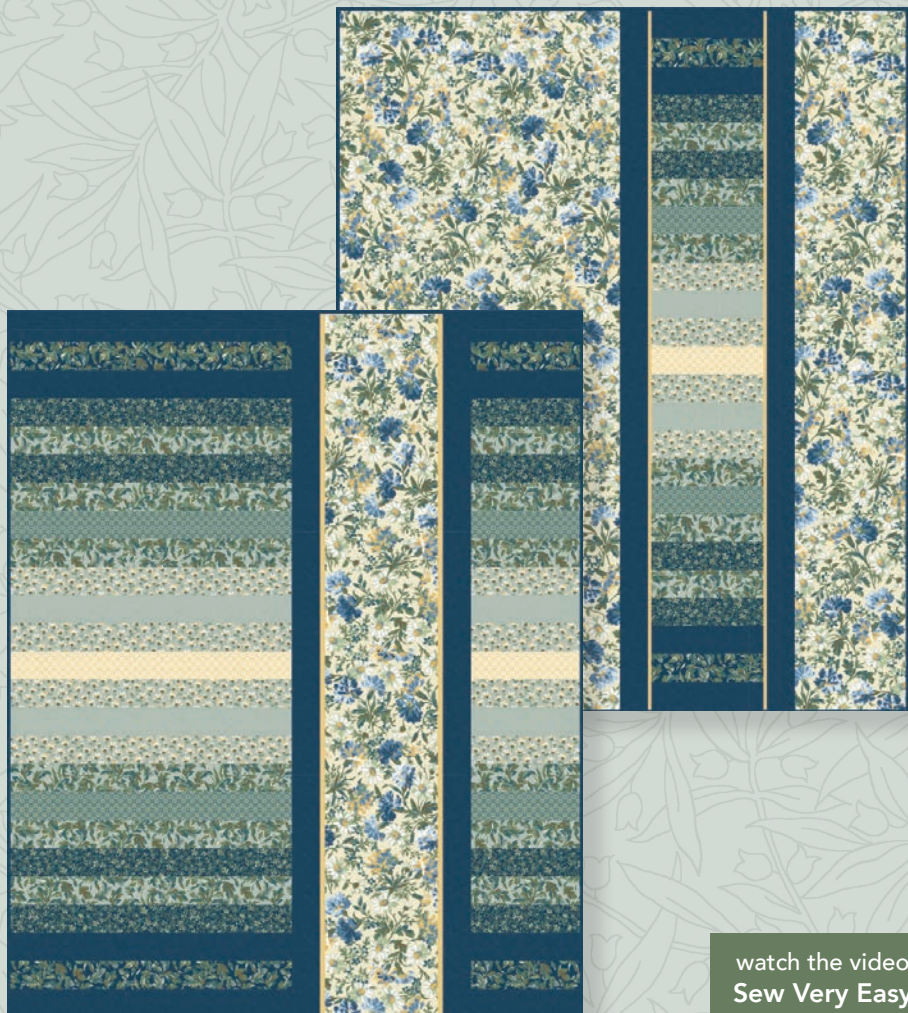


MAYWOOD  STUDIO

Parfait Quilt



watch the video
Sew Very Easy



Parfait Quilt - Two in One!
41" x 50"

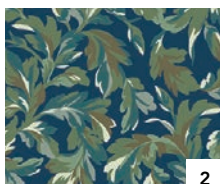
Featuring the Willoughby Fabric Collection
2½" Strip-Friendly

maywoodstudio.com

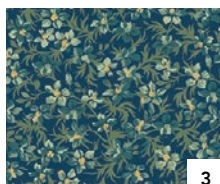
Willoughby



10527-N 1



10522-N 2



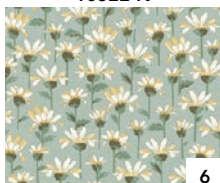
10524-N 3



10522-B 4



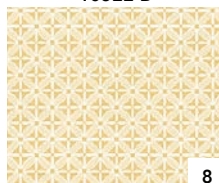
10526-Q 5



10523-B 6



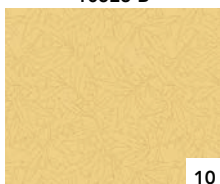
10527-B 7



10526-E 8



10520-E Background 9



10527-S 10

WOF - Width of Fabric
 LOF - Length of Fabric
 RST - Right Sides Together
 HST - Half Square Triangle

FABRIC REQUIREMENTS		
F1	Strips	or 1/3 yard
	Sashing	1/2 yard
	Binding *see below	3/8 yard each
F3, F6	Strips	or 1/3 yard
F2, F5, F7	Strips	or 1/4 yard
F4	Strips	or 1/4 yard
F9	Background	1-1/2 yards
F10		1/4 yard flanges
Backing	*see below	3-1/2 yards each OR 1-1/2 yards for borders

STRIPS: There are 25 strips used in the Parfait Quilt. For the version on the cover, we have used 8 different fabrics in our layout. Follow our illustrations or arrange the fabrics to your liking.

BACKING:

You will need 3-1/2 yards for each quilt for the backing. For a reversible quilt you will only need 1-1/2 yards to add the borders shown on p.7.

BINDING:

One Quilt: You need 3/8 yard for the binding
Two Quilts: You need 3/4 yard: 3/8 yard for each quilt.

CUTTING

Fabric *1,

Cut (4) 2-1/2" x WOF strips

Sashing

(6) 2-1/2" x WOF strips

Binding

Cut (5) 2-1/2" x WOF strips for each quilt.

Note: you will need (10) 2-1/2" x WOF strips if you are making two quilts, and (5) if you are making one reversible quilt.

Cutting for the strips if you are using yardage:

Fabrics 3, 6

Cut (4) 2-1/2" x WOF strips

Fabric 2, 5, 7

Cut (2) 2-1/2" x WOF strips

Fabric 4

Cut (6) 2-1/2" x WOF strips

Fabric 8

Cut (1) 2-1/2" x WOF strip

Fabric 9 *See cutting guide below

Cut the following pieces along the LOF (Length of Fabric)

(1) 20-1/2" x 50-1/2"

(1) 9-1/2" x 50-1/2"

(1) 8-1/2" x 50-1/2"

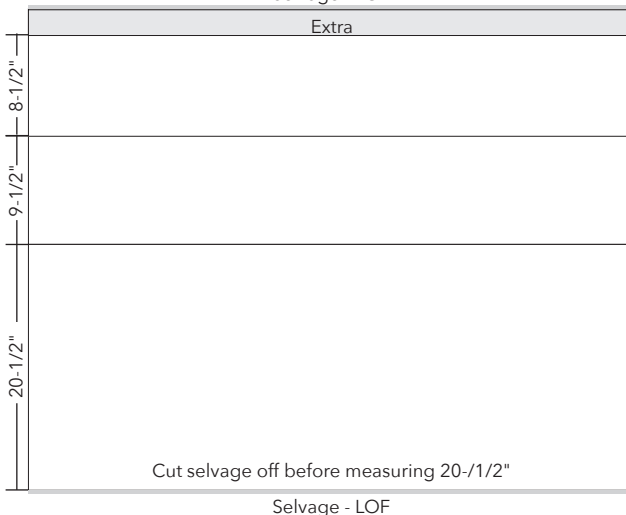
*Line this up with the selvage as illustrated below. There will be a small amount of extra left over.

Fabric 10

Flanges: Cut (6) 1" x WOF strip

Background Fabric Cutting Guide

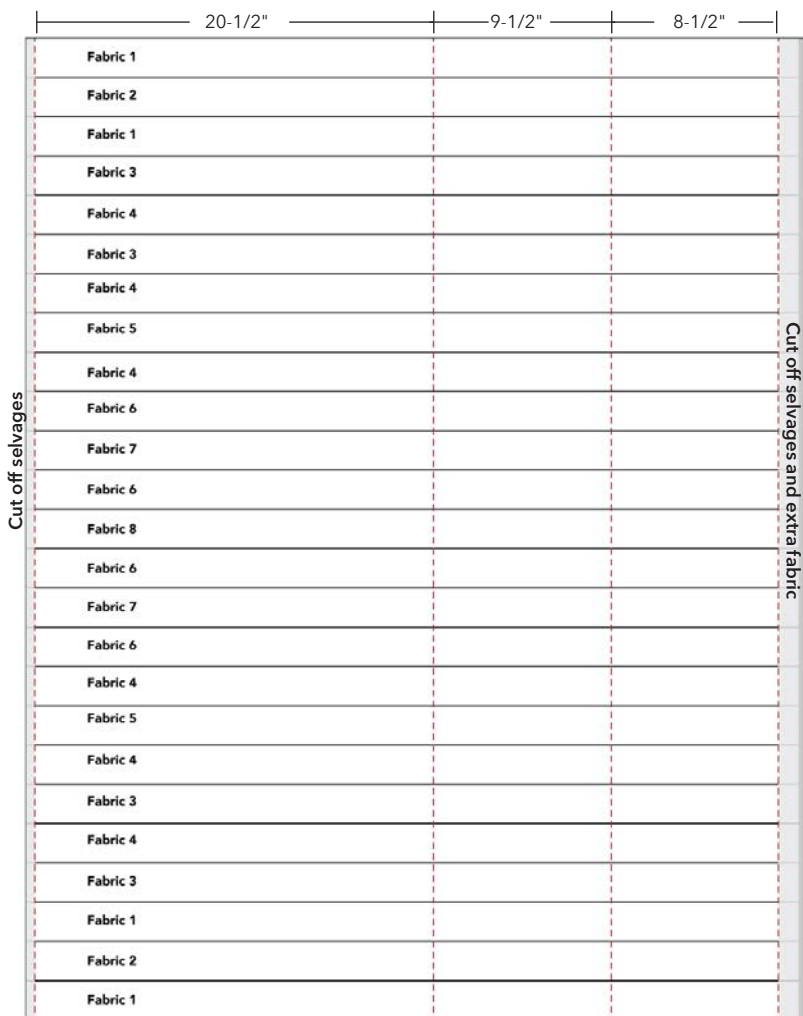
Selvage - LOF



Please read all instructions before you begin. Seam allowance is 1/4". Fabric is abbreviated as F and by number. For example, Fabric 1 is 'F1'. Press seams in the direction of the arrows.

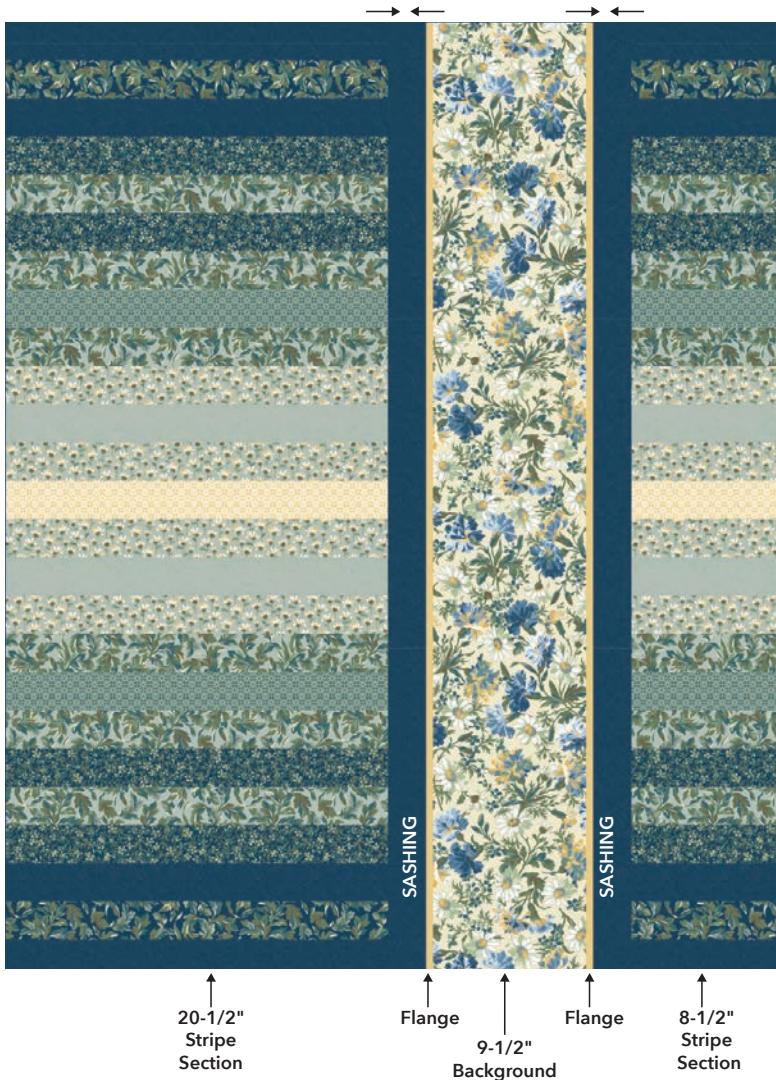
Sew the Strips Together

1. Arrange the strips as illustrated below. Sew along the long ends. Press in one direction.
2. Mark and cut the strips into 3 sections. Remove the selvage before marking.
20-1/2" - 9-1/2" - 8-1/2" x the length of the sewn strips.



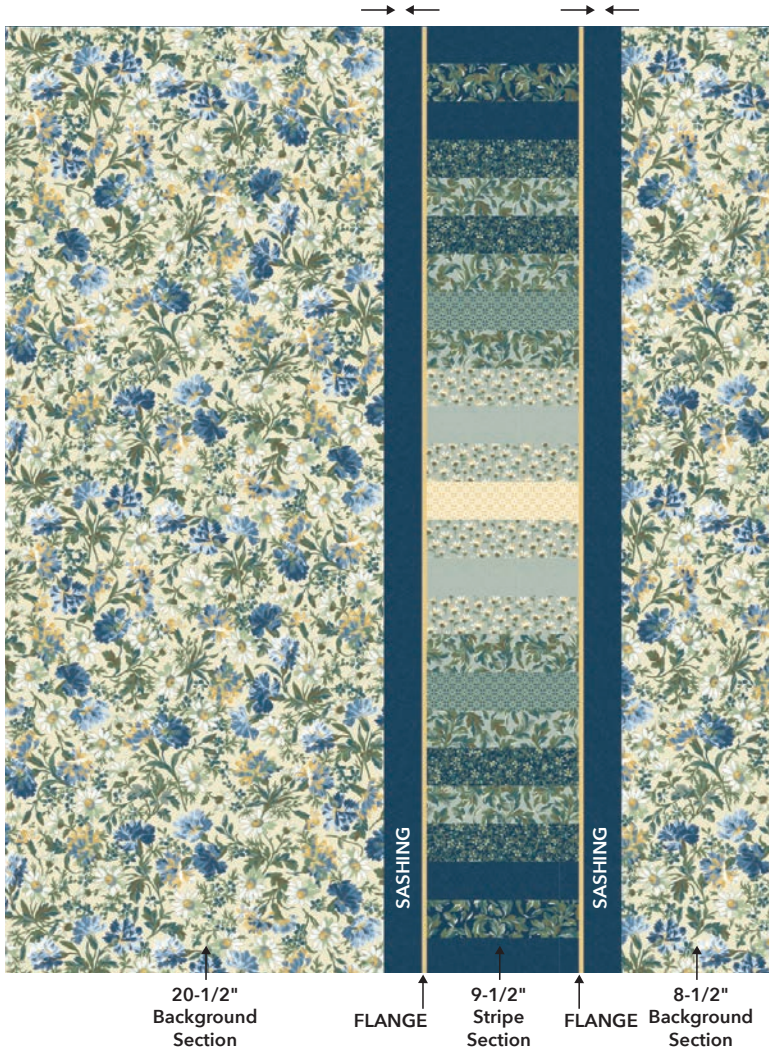
Quilt Top 1

1. Sew the F10 1" flange strips together end to end. Press in 1/2 length-wise. Cut into (4) 50-1/2" strips.
2. Matching the raw edges with the folded edge toward the center and baste a flange strip to either side of the 9-1/2" background section.
3. Sew (6) F1 sashing strips together end to end. Cut into (4) 2-1/2" x 50-1/2" lengths.
4. Sew an F1 sashing strip to either side of the background section, sandwiching the flange, and matching the raw edges. Press the flanges and the sashing away from the background section.
4. Sew the 20-1/2" and 8-1/2" stripe sections to either side of the step 4 section referring to the illustration below. Press in the direction of the arrows.



Quilt Top 2

1. Matching the raw edges with the folded edge toward the center and baste a flange strip to either side of the 9-1/2" stripe section.
2. Sew an F14 black sashing strip to either side of the step one section, matching the raw edges. Press the flanges and the sashing away from the stripe section.
4. Sew the remaining background sections to either side of the step 2 section, referring to the illustration below. Press in the direction of the arrows.



Finishing for two separate quilts

1. Layer the backing (wrong side up), batting and quilt top (right side up). Baste layers to secure. Quilt as desired. Trim the excess backing and batting.

2. Sew the binding strips together into one continuous strip. Press in half length-wise. Sew the binding to the quilt top with a 1/4" seam allowance. Turn the binding to the back side of the quilt and stitch down by hand with matching thread.

Finishing for a reversible quilt (illustrated below):

Cut the following borders LOF. You will need 1-1/2 yards of F14

Quilt Top 1

1. Sew a 3-1/2" x 50-1/2" F1 border to the sides of Quilt Top 1.
2. Sew a 3-1/2" x 47-1/2" F1 border to the top and bottom of Quilt Top 1.

Quilt Top 2

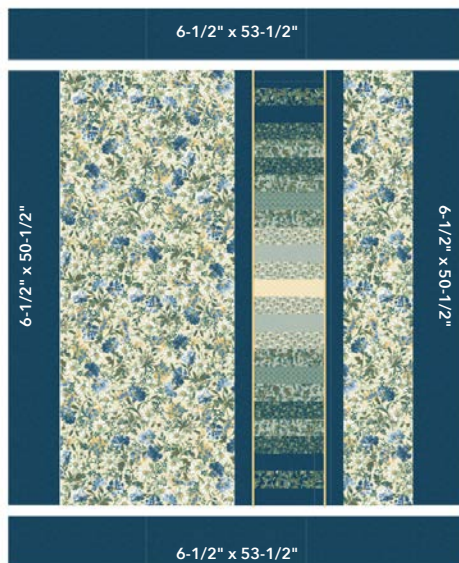
3. Sew a 6-1/2" x 50-1/2" F1 border to the sides of Quilt Top 2.
 4. Sew a 6-1/2" x 53-1/2" F1 border to the top and bottom of Quilt Top 2.
5. Follow step 1 & 2 above, replacing Quilt Top 2 with the backing.

Adding Borders for reversible version

Quilt Top 1



Quilt Top 2



Quilt Planning Diagram

Use this template to plan your quilt

Fabric 1	Fabric 1
Fabric 2	Fabric 2
Fabric 1	Fabric 1
Fabric 3	Fabric 3
Fabric 4	Fabric 4
Fabric 3	Fabric 3
Fabric 4	Fabric 4
Fabric 5	Fabric 5
Fabric 4	Fabric 4
Fabric 6	Fabric 6
Fabric 7	Fabric 7
Fabric 6	Fabric 6
Fabric 8	Fabric 8
Fabric 6	Fabric 6
Fabric 7	Fabric 7
Fabric 6	Fabric 6
Fabric 4	Fabric 4
Fabric 5	Fabric 5
Fabric 4	Fabric 4
Fabric 3	Fabric 3
Fabric 3	Fabric 3
Fabric 1	Fabric 1
Fabric 2	Fabric 2
Fabric 1	Fabric 1

Fabric 1	Fabric 1
Fabric 2	Fabric 2
Fabric 1	Fabric 1
Fabric 3	Fabric 3
Fabric 4	Fabric 4
Fabric 3	Fabric 3
Fabric 4	Fabric 4
Fabric 5	Fabric 5
Fabric 4	Fabric 4
Fabric 3	Fabric 3
Fabric 4	Fabric 4
Fabric 3	Fabric 3
Fabric 3	Fabric 3
Fabric 4	Fabric 4
Fabric 3	Fabric 3
Fabric 1	Fabric 1
Fabric 2	Fabric 2
Fabric 1	Fabric 1