

1803

# Radiance

by Kaye England



Throw Quilt: 60" x 66"



[www.wilmingtonprints.com](http://www.wilmingtonprints.com)

Wilmington Prints: A World of Possibilities



# Radiance

Please read all instructions carefully AND identify all fabrics before beginning. WOF = width of fabric.  
All instructions include a 1/4" seam allowance and strips are cut selvage to selvage, unless stated otherwise.

## 1. Cut the following:

*If using FAT CUTS, you may need to cut additional width-of-fabric strips.*

**Fabric A** - Cut (1) 3" strip, subcut (12) 3" squares

**Fabric B** - Cut (2) 5" strips, subcut (12) 5" squares

Cut (3) 4-1/2" strips, subcut (48) 2-1/2" x 4-1/2" pieces

Cut (4) 3" strips, subcut (48) 3" squares

**Fabric C** - Cut (2) 5" strips, subcut (12) 5" squares and (4) 2-1/2" squares

Cut (1) 3" strip, subcut (12) 3" squares

**Fabric D** - Cut (3) 4-1/2" strips, sewn together end to end and cut into (2) 4-1/2" x 52-1/2" borders and (4) 2-1/2" squares

Cut (4) 3" strips, subcut (48) 3" squares

Cut (6) 2-1/2" strips, subcut (96) 2-1/2" squares

Cut (3) 1-1/2" strips, sewn together end to end and cut into (2) 1-1/2" x 50-1/2" borders

**Fabric E** - Cut (1) 3" strip, subcut (2) 3" squares and (12) 2-1/2" squares

Cut (1) 2-1/2" strip, subcut (16) 2-1/2" squares

**Fabric F** - Cut (1) 3" strip, subcut (10) 3" squares

Cut (1) 2-1/2" strip, subcut (4) 2-1/2" x 4-1/2" pieces

**Fabric G** - Cut (3) 2-1/2" strips

**Fabric H** - Cut (6) 4-1/2" strips, sewn together end to end and cut into (2) 4-1/2" x 60-1/2" and (2) 4-1/2" x 58-1/2" borders

Cut (2) 2-1/2" strips, subcut (4) 2-1/2" x 8-1/2" and (4) 2-1/2" x 6-1/2" pieces

**Fabric I** - Cut (1) 3" strip, subcut (12) 3" squares

Cut (3) 2-1/2" strips  
Cut (2) 2-1/2" strips, subcut (4) 2-1/2" x 6-1/2" and (4) 2-1/2" x 4-1/2" pieces

**Fabric J** - Cut (2) 2-1/2" strips, subcut (4) 2-1/2" x 10-1/2" and (4) 2-1/2" x 8-1/2" pieces

**Fabric K** - Cut (2) 3" strips, subcut (24) 3" squares

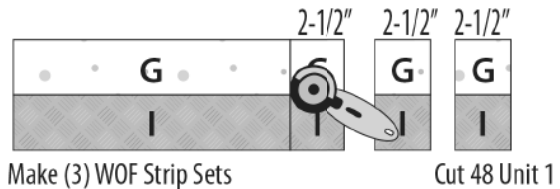
**Fabric L** - Cut (2) 3" strips, subcut (20) 3" squares

Cut (7) 2-1/2" strips (binding)

Cut (5) 1-1/2" strips, sewn together end to end and cut into (2) 1-1/2" x 50-1/2" and (2) 1-1/2" x 48-1/2" borders

## 2. Piecing Order:

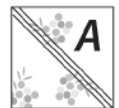
1. Sew 1 each **Fabrics G** and **I** 2-1/2" x WOF strips together lengthwise. Make a total of 3 strip sets. From these, cut (48) 2-1/2" wide Unit 1 (2-1/2" x 4-1/2" unfinished).



2. Sew 2 Unit 1 together, alternating fabrics. Make a total of 24 Unit 2 (4-1/2" square unfinished).

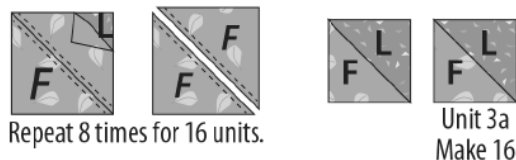


3. On the wrong side of all **Fabrics A, D, F, and K** 3" squares and all **Fabric C** 5" squares, draw a diagonal line from corner to corner. Draw 2 lines 1/4" on each side of first line.



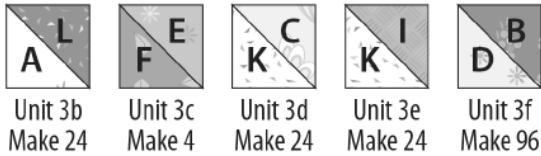
*Letters in italics indicate wrong side of fabric.*

4. Arrange a marked **Fabric F** 3" square right sides together with a **Fabric L** 3" square aligning all edges. Stitch along the 2 outside lines. Cut along the center line. Press the 2 triangle sets open. Centering seam, trim each to 2-1/2" square. Make a total of 16 Unit 3a.

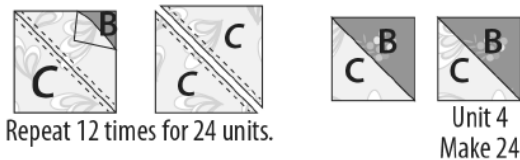


# Radiance

5. In the same manner, make the number Units 3b-3f listed with fabrics indicated.



6. Arrange a marked **Fabric C** 5" square right sides together with a **Fabric B** 5" square aligning all edges. Stitch along the 2 outside lines. Cut along the center line. Press the 2 triangle sets open. Centering seam, trim each to 4-1/2" square. Make a total of 24 Unit 4.



7. Draw a diagonal line across the wrong side of all the **Fabrics D** and **E** 2-1/2" squares.



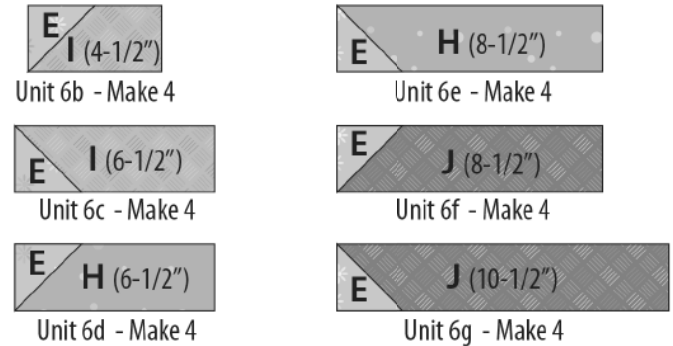
8. Arrange a marked **Fabric D** 2-1/2" square on an end of a **Fabric B** 2-1/2" x 4-1/2" piece as shown. Stitch along marked line. Trim seam allowance to 1/4". Press corner out. Repeat on other end. Make a total of 48 Unit 5 (2-1/2" x 4-1/2" unfinished).



9. Arrange a marked **Fabric E** 2-1/2" square on an end of a **Fabric F** 2-1/2" x 4-1/2" piece as shown. Stitch along marked line. Trim seam allowance to 1/4". Press corner out. Make a total of 4 Unit 6a (2-1/2" x 4-1/2" unfinished).



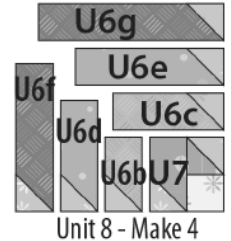
10. In the same manner, make 4 each Units 6b-6g with fabrics indicated (length of pieces listed on diagrams). Note orientation of added corners.



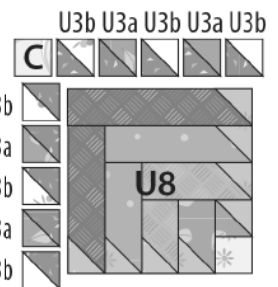
11. Stitch a Unit 3c to a **Fabric D** 2-1/2" square as shown. Add a Unit 6a as shown. Make a total of 4 Unit 7 (4-1/2" square unfinished).



12. Sew a Unit 6b to left of a Unit 7. Add a Unit 6c to top. Continue to add Units 6d-6g as shown. Make a total of 4 Unit 8 (10-1/2" square unfinished).

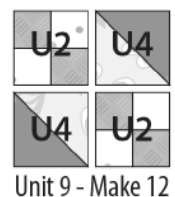


13. Arrange 2 Unit 3a and 3 Unit 3b in a vertical row on left side of a Unit 8. Stitch into a row (2-1/2" x 10-1/2" unfinished) then sew to left side of Unit 8.



Arrange 1 **Fabric C** 2-1/2" square, 2 Unit 3a, and 3 Unit 3b in a row above the unit. Stitch into a row (2-1/2" x 12-1/2" unfinished) then sew to top. Make a total of 4 **Block 1** (12-1/2" square unfinished)

14. Arrange 2 each Units 2 and 4 in 2 rows. Stitch into rows. Sew rows together. Make a total of 12 Unit 9 (8-1/2" square unfinished).



# Radiance

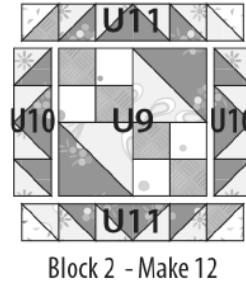
15. Stitch 2 Unit 3f to ends of a Unit 5 as shown. Make a total of 48 Unit 10 (2-1/2" x 8-1/2" unfinished).



16. Sew 1 each Units 3d and 3e to each end of a Unit 10 as shown. Make a total of 24 Unit 11 (2-1/2" x 12-1/2" unfinished).



17. Arrange 1 Unit 9, 2 Unit 10, and 2 Unit 11 in 3 rows as shown. Stitch center into a row. Sew rows together. Make a total of 12 **Block 2** (12-1/2" square unfinished).



18. Refer to Quilt Layout (Page 4) for arrangement and placement of blocks and borders.

19. Arrange blocks in 4 rows. Stitch into rows. Sew rows together completing quilt center (48-1/2" square unfinished).

20. Sew **Fabric L** 1-1/2" x 48-1/2" borders to right and left sides of quilt center. Add **Fabric L** 1-1/2" x 50-1/2" borders to top and bottom of quilt center.

21. Sew **Fabric D** 1-1/2" x 50-1/2" borders to right and left sides of quilt. Add **Fabric D** 4-1/2" x 52-1/2" borders to top and bottom of quilt.

22. Sew **Fabric H** 4-1/2" x 58-1/2" borders to right and left sides of quilt. Add **Fabric H** 4-1/2" x 60-1/2" borders to top and bottom of quilt.

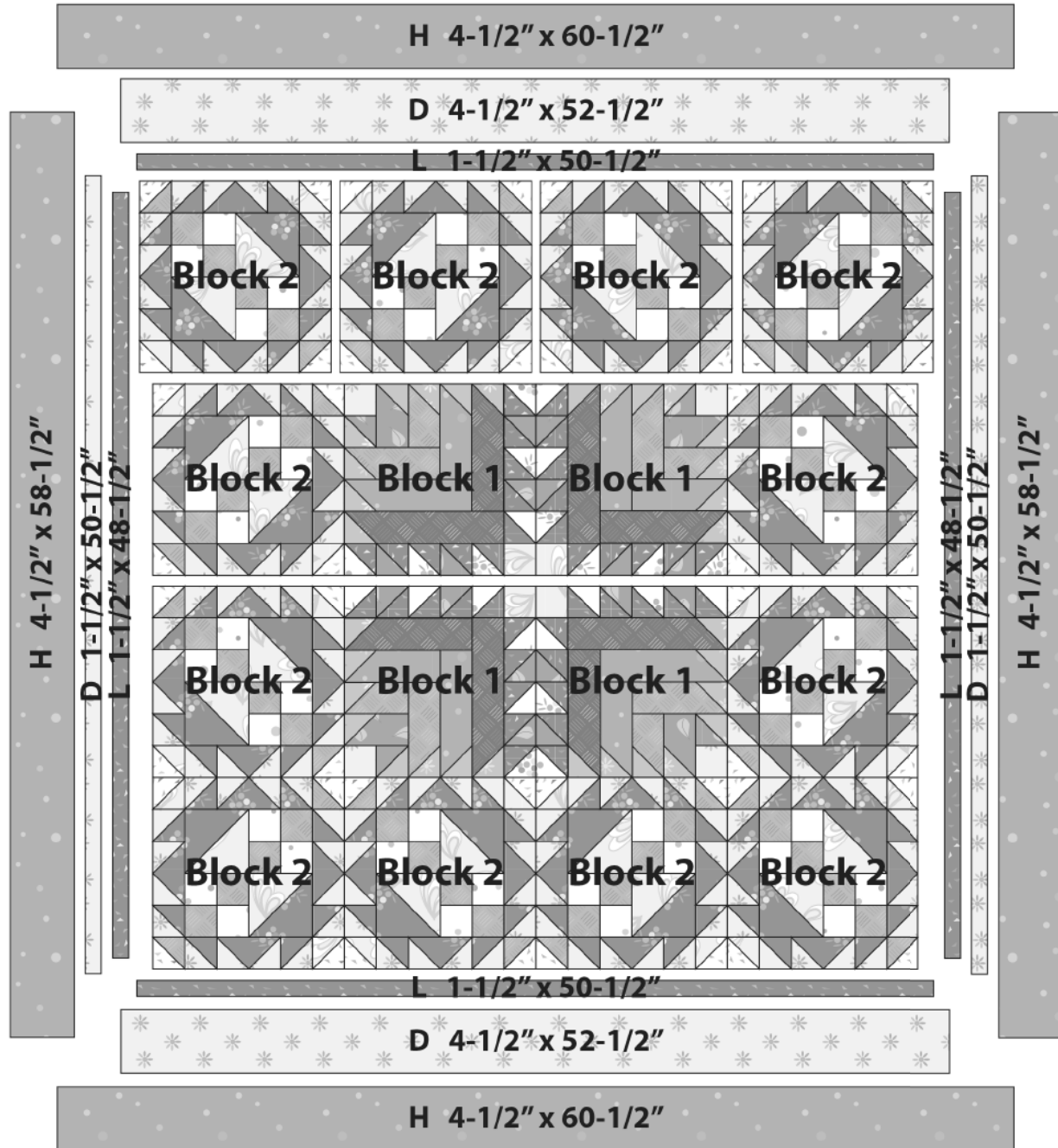
23. The quilt measures approximately 60-1/2" x 66-1/2" (unfinished). Make backing (**Fabric M**) approximately 8" larger than the top.

24. Layer and baste top, batting, and backing together. Quilt as desired. Attach binding (**Fabric L**) and enjoy!!

# Radiance

## QUILT LAYOUT

Border measurements are the cut size.  
Arrows indicate orientation of directional prints.





1803

Project Sheet - 555-826-555

# Radiance

by Kaye England



**Fabric A**  
1803-98740-114  
1/8 yard (or Fat Eighth)



**Fabric B**  
1803-98741-424  
1-1/3 yards



**Fabric C**  
1803-98742-144  
1/2 yard



**Fabric D**  
1803-98743-144  
1-5/8 yards



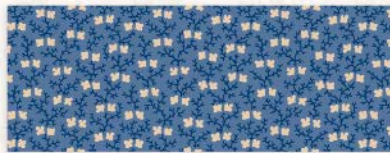
**Fabric E**  
1803-98743-444  
1/4 yard (or Fat Quarter)



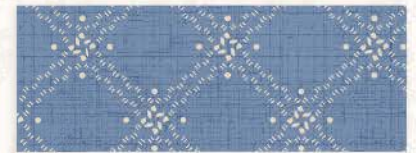
**Fabric F**  
1803-98744-414  
1/4 yard (or Fat Quarter)



**Fabric G**  
1803-98745-124  
1/3 yard



**Fabric H**  
1803-98745-442  
1-1/8 yards



**Fabric I**  
1803-98746-401  
5/8 yard



**Fabric J**  
1803-98746-491  
1/4 yard (or Fat Quarter)



**Fabric K**  
1803-98747-111  
1/4 yard (or Fat Quarter)



**Fabric L**  
1803-98747-449  
1-1/4 yards

**Quilter's Choice**

**Fabric M**  
Backing only  
44/45" - 4 yards  
108" - 2 yards



[www.wilmingtonprints.com](http://www.wilmingtonprints.com)



745181524388

Wilmington Prints: A World of Possibilities