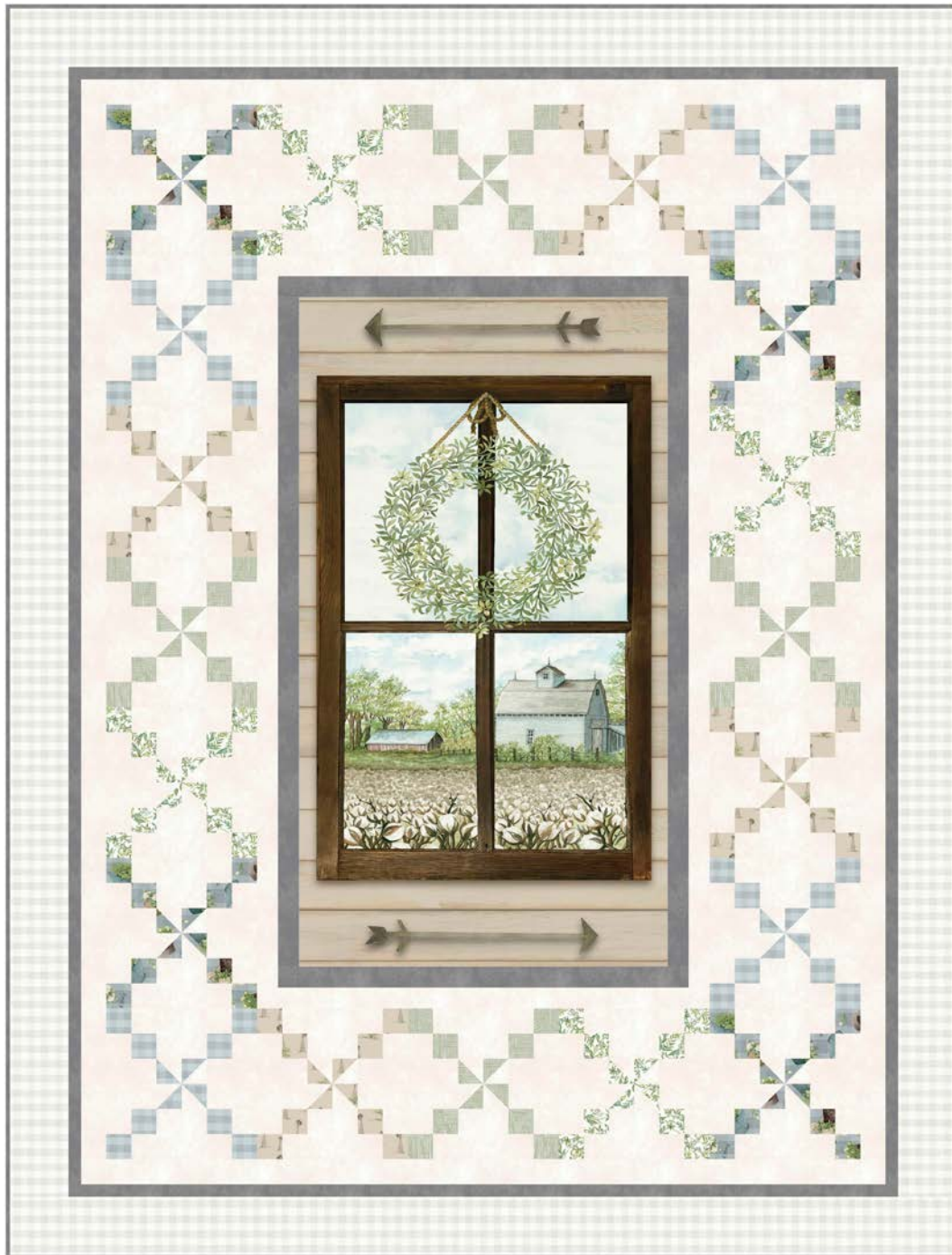


Farm View

A Day On The Farm Quilt designed by Wendy Sheppard



Approximate size: 56 1/2" x 74 1/2"

*Featuring fabrics from the Farm View fabric collection
by Cindy Jacobs*



P&B Textiles • pbtex.com • p800-351-9087 • 208 Clock Tower Square, Portsmouth, RI 02871

Farm View

Fabric collection by Cindy Jacobs
 A Day On The Farm Quilt designed by Wendy Sheppard
 Finished size approximately: 56 1/2" x 74 1/2"

Yardage:

Fabric A	FVIE 5570 PA.....	1 panel
Fabric B	SUE7 303 EW.....	2 yards
Fabric C	SUE7 303 S.....	1 yard
Fabric D	GRAS 5233 LG.....	1/4 yard
Fabric E	FVIE 5572 SB.....	1/4 yard
Fabric F	FVIE 5573 NE.....	1/4 yard
Fabric G	FVIE 5574 W.....	1/4 yard
Fabric H	FVIE 5575 EW.....	7/8 yard
Fabric I	FVIE 5575 SB.....	1/4 yard
Backing	3 5/8 yards
Batting	64" x 82"

Fabric D, E, F, G, I:

Inner border #3:

- Cut (2) 2" x WOF strips. Subcut (32) 2" x 2" squares.
- Cut (1) 2 1/2" x WOF strip. Subcut (8) 2 1/2" x 2 1/2" squares.

Fabric H:

- **Outer border:** Cut (7) 4" x WOF strips. Piece strips and subcut (2) 4" x 57" and (2) 4" x 68" strips.

Cutting Instructions:

Please read all instructions carefully before beginning. Strips are cut across the width of fabric **WOF** (perpendicular to selvages) unless otherwise stated. All seams are sewn with 1/4" seam unless otherwise stated. Label all pieces.

Fabric A:

- **Quilt center:** Cut (1) 22 1/2" x 40 1/2" rectangle, centering design.

Fabric B:

- **Inner border #2:** Cut (4) 1 3/4" x WOF strips. Subcut (2) 1 3/4" x 27 1/2" strips from (2) WOF strips. Piece leftover with remaining (2) WOF strips and subcut (2) 1 3/4" x 43" strips.

Inner border #3:

- Cut (3) 2 1/2" x WOF strips. Subcut (40) 2 1/2" x 2 1/2" squares.
- Cut (4) 3 1/2" x WOF strips. Subcut (80) 2" x 3 1/2" rectangles.
- Cut (4) 6 1/2" x WOF strips. Subcut (80) 2" x 6 1/2" rectangles.
- **Inner border #4:** Cut (6) 2" x WOF strips. Piece strips and subcut (2) 2" x 48 1/2" and (2) 2" x 63 1/2" strips.

Fabric C:

- **Inner border #1:** Cut (4) 1 3/4" x WOF strips. Subcut (2) 1 3/4" x 25" and (2) 1 3/4" x 40 1/2" strips.
- **Inner border #5:** Cut (6) 1 1/4" x WOF strips. Piece strips and subcut (2) 1 1/4" x 50" and (2) 1 1/4" x 66 1/2" strips.
- **Binding:** Cut (8) 2 1/4" x WOF strips. Piece to make a binding strip.

Piecing Instructions:

1. Draw a diagonal line on the wrong side of (1) 2 1/2" x 2 1/2" **Fabric B** square. Place square, right sides together, on (1) 2 1/2" x 2 1/2" **Print** square. Sew 1/4" away from both sides of drawn line. Cut along drawn line to yield (2) HST units. Open and press. Align diagonal seam of HST units against 45-degree line on quilting ruler. Trim units to measure 2" x 2" unfinished.



Diagram 1

Make a total of (4) units, and sew them together to make a pinwheel unit.



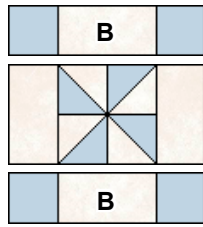
3 1/2" unfinished
Diagram 2

2. Sew (2) 2" x 3 1/2" **Fabric B** rectangles to the opposite sides of Step 1 unit to make a row unit.



Diagram 3

3. Sew (2) 2" x 2" **Print** squares to the opposite sides of (1) 2" x 3 1/2" **Fabric B** rectangle to make a row unit. Make a total of (2) row units. Sew units to the top and bottom of Step 2 unit.



6 1/2" unfinished
Diagram 4

4. Sew (2) 2" x 6 1/2" **Fabric B** rectangles to the opposite sides of Step 3 unit to make a row unit.

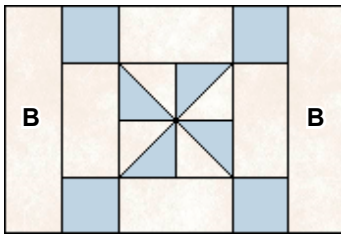


Diagram 5

5. Sew (2) 2" x 2" **Print** squares to the opposite sides of (1) 2" x 6 1/2" **Fabric B** rectangle to make a row unit. Make a total of (2) row units. Sew units to the top and bottom of Step 4 unit to complete (1) pieced block. Block measures 9 1/2" x 9 1/2" unfinished.

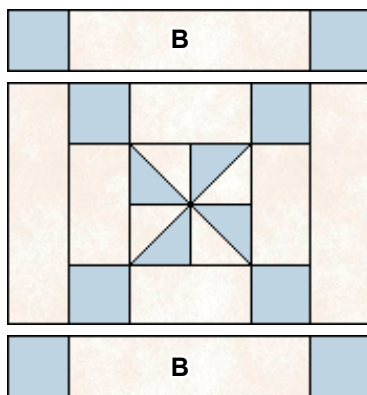


Diagram 6

6. Make a total of (4) blocks for the following prints:

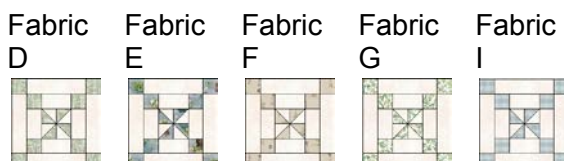


Diagram 7

Quilt Top Assembly:

- Inner border #1.** Sew (2) 1 3/4" x 40 1/2" **Fabric C** strips to the opposite long sides of 22 1/2" x 40 1/2" **Fabric A** quilt center, followed by (2) 1 3/4" x 25" **Fabric C** strips to the remaining opposite short sides of quilt center.
- Inner border #2.** Sew (2) 1 3/4" x 43" **Fabric B** strips to the opposite long sides of quilt center, followed by (2) 1 3/4" x 27 1/2" **Fabric B** strips to the remaining opposite short sides of quilt center.
- Inner border #3.** Refer to quilt image for block placement guide, arrange and sew together (5) pieced blocks to make a column unit.

Make a total of (2) column units, and sew to the opposite long sides of quilt center. Sew together (5) pieced blocks to make a row unit. Make a total of (2) row units, and sew to the top and bottom of quilt center.

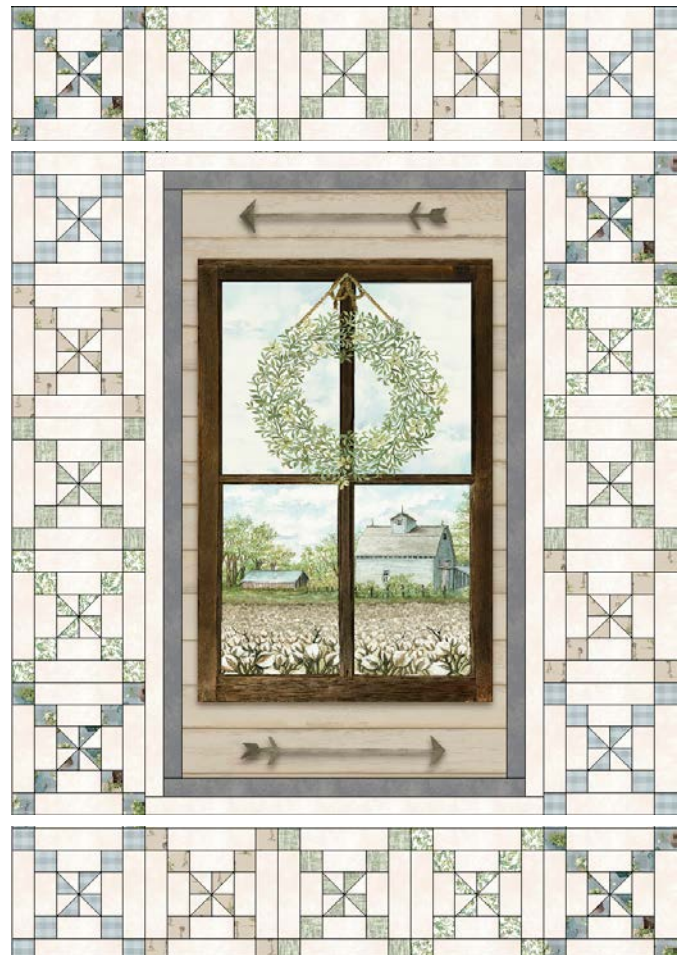


Diagram 8

4. **Inner border #4.** Sew (2) 2" x 63 1/2" **Fabric B** strips to the opposite long sides of quilt center, followed by (2) 2" x 48 1/2" **Fabric B** strips to the remaining opposite short sides of quilt center.
5. **Inner border #5.** Sew (2) 1 1/4" x 66 1/2" **Fabric C** strips to the opposite long sides of quilt center, followed by (2) 1 1/4" x 50" **Fabric C** strips to the remaining opposite short sides of quilt center.
6. **Outer border.** Sew (2) 4" x 68" **Fabric H** strips to the opposite long sides of quilt center, followed by (2) 4" x 57" **Fabric H** strips to the remaining opposite short sides of quilt center to complete quilt top.

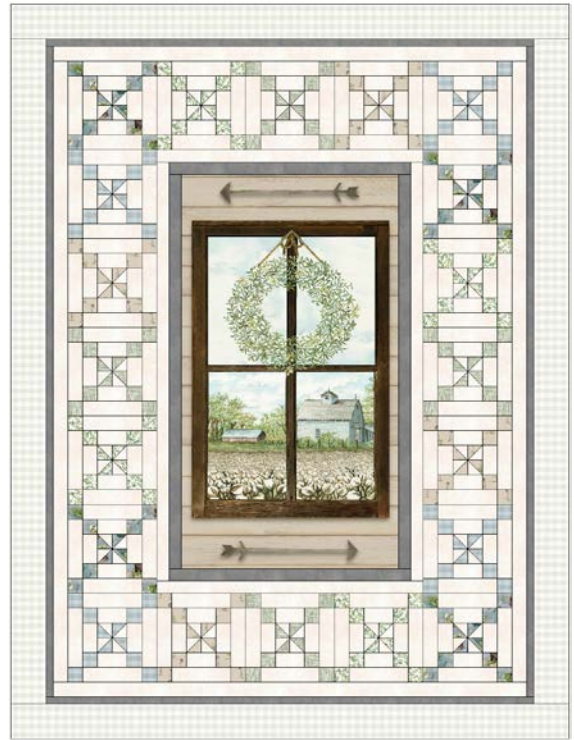
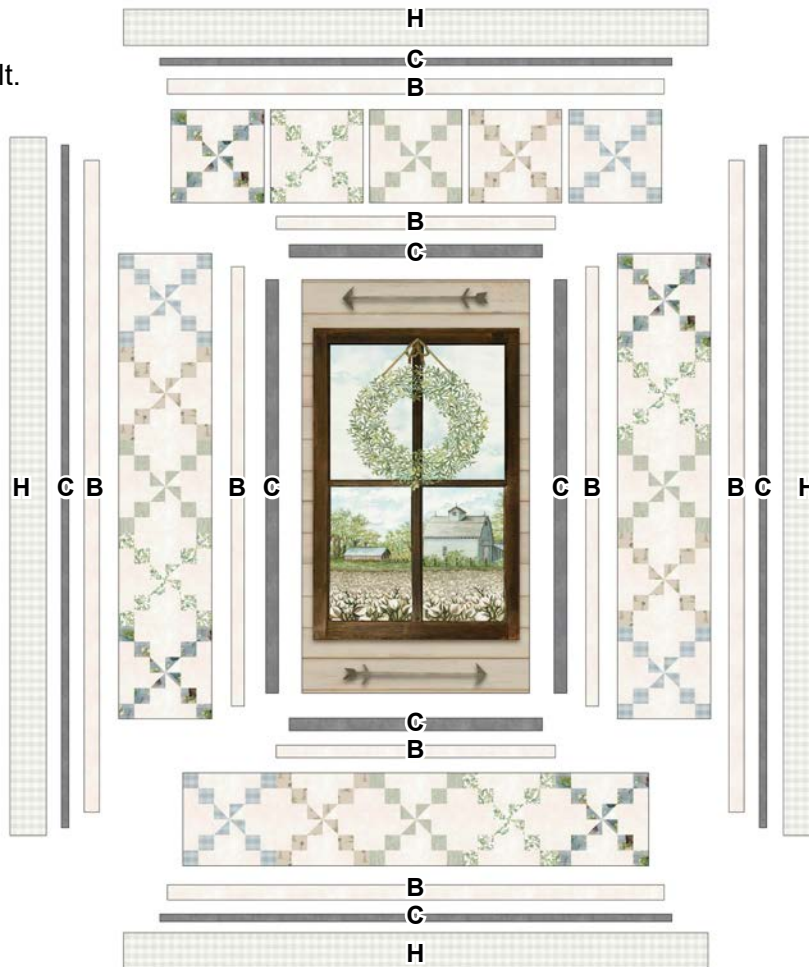


Diagram 9

Finishing:

1. Prepare backing using two widths of fabric with horizontal seam. Press and trim to 64" x 82".
2. With the backing fabric laying taut, place batting and quilt top to form quilt sandwich. Baste sandwich.
3. Quilt as desired.
4. Bind to finish quilt.



Quilt Diagram

Farm View

Fabric Collection by
Cindy Jacobs



FVIE 5570 PA
Fabric A



FVIE 5571 MU



FVIE 5572 EW



FVIE 5572 SB
Fabric E



FVIE 5572 Z



FVIE 5573 E



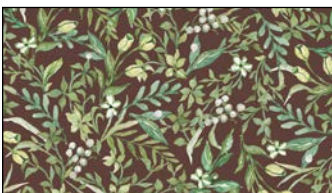
FVIE 5573 NE
Fabric F



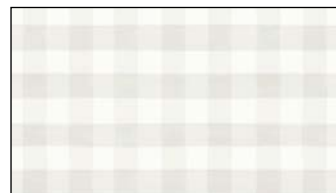
FVIE 5573 SB



FVIE 5574 W
Fabric G



FVIE 5574 Z



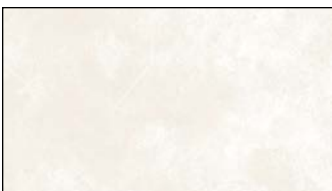
FVIE 5575 EW
Fabric H



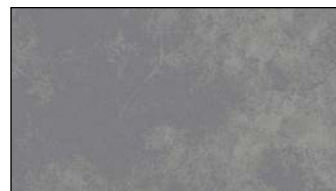
FVIE 5575 G



FVIE 5575 SB
Fabric I



SUE7 303 EW
Fabric B



SUE7 303 S *
Fabric C



GRAS 5233 LG
Fabric D

