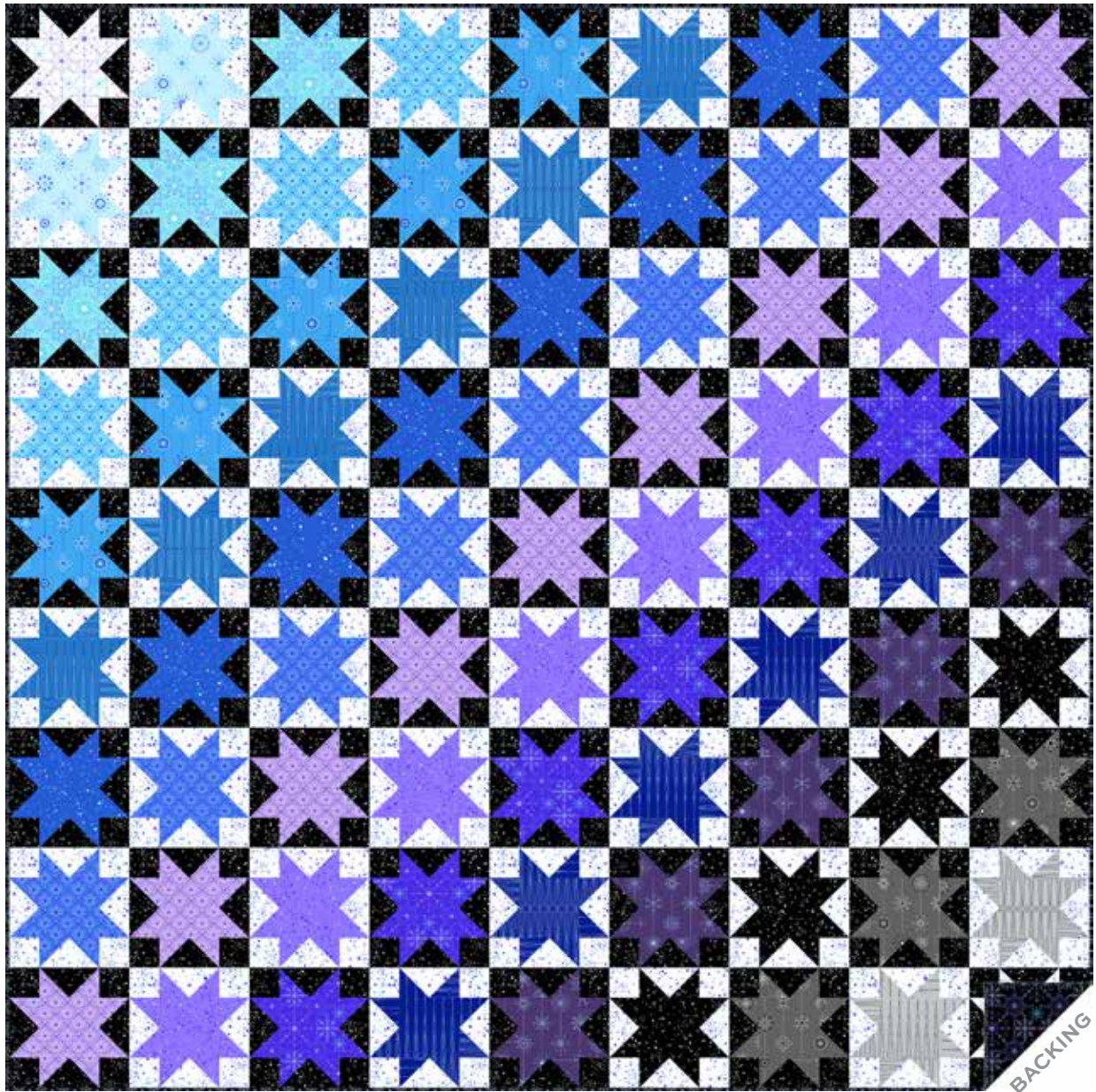


# Century Prints – Deco Frost

GIUCY GIUCE



Frosted Quilt designed by: **GIUCY GIUCE**  
Quilt Size: **72" x 72"** • Skill Level: **Beginner**

# Frosted

Introducing Andover Fabrics new collection: **CENTURY PRINTS – DECO FROST** by Giucy Giuce

Quilt designed by Giucy Giuce

Quilt finishes 72" x 72"

41 Dark Blocks: 8" x 8"

40 Light Blocks: 8" x 8"

## Fabric Requirements

	Yardage	Fabric	
<b>Fabric A</b>	blocks	2¾ yards	1112-K
<b>Fabric B</b>	blocks	2¼ yards	1112-LB
<b>5 Brights</b>	blocks	½ yard ea.	
	1111-B	1111-P	1112-B 1112-P
	1113-B		
<b>4 Blues</b>	blocks	⅜ yard each	
	1110-B	1110-LB	1114-B 1114-P
<b>3 Fat ¼</b>	blocks	fat ¼ each	
	1111-LB	1113-LB	1114-K
<b>4 Fat ⅛</b>	blocks	fat ⅛ each	
	1110-C	1110-L	1113-L 1114-LB
<b>Binding</b>		⅝ yard	1111-K
<b>Backing</b>		4¾ yards	1113-K

*Snowflakes and ice crystals on soft blue, purple, and neutral gray prints are the focal point of this lovely throw-size quilt. The diagonal color shifts create movement within the design. The traditional Evening Star blocks are easy to construct.*

## Cutting for entire quilt:

### Fabric A

Cut (164) rectangles 2½" x 4½" (background patches for 41 dark blocks)

Cut (164) squares 2½" (background patches for 41 dark blocks)

Cut (32) squares 2½" (star patches for 4 blocks)

Cut (4) squares 4½" (star patches for 4 blocks)

### Fabric B

Cut (160) rectangles 2½" x 4½" (background patches for 40 light blocks)

Cut (160) squares 2½" (background patches for 40 light blocks)

### 5 Brights

From each:  
Cut star patches for 7, 8, or 9 blocks (Read Step 1 first.)

### 4 Blues

From each:  
Cut star patches for 5 or 6 blocks

### 3 Fat ¼

From each:  
Cut star patches for 3 or 4 blocks

### 4 Fat ⅛

From each:  
Cut star patches for 1 or 2 blocks.

### Binding

Cut (8) strips 2½" x WOF for binding

### Backing

Cut (2) lengths 41" x 82", pieced to fit quilt top with overlap on all sides

## Cutting Directions

**Note:** Read assembly directions before cutting patches. All measurements are cut sizes and include ¼" seam allowances. A fat ⅛ is a 9" x 20"-22" cut of fabric. A fat ¼ is an 18" x 20"-22" cut. WOF designates the width of fabric from selvedge (approximately 42" wide).

### Cutting for ONE Dark Block:

#### Fabric A

Cut (4) rectangles 2½" x 4½"

Cut (4) squares 2½"

#### Blue/Purple Fabric for Stars

Cut (1) square 4½"

Cut (8) squares 2½"

### Cutting for ONE Light Block:

#### Fabric B

Cut (4) rectangles 2½" x 4½"

Cut (4) squares 2½"

#### Blue/Purple Fabric for Stars

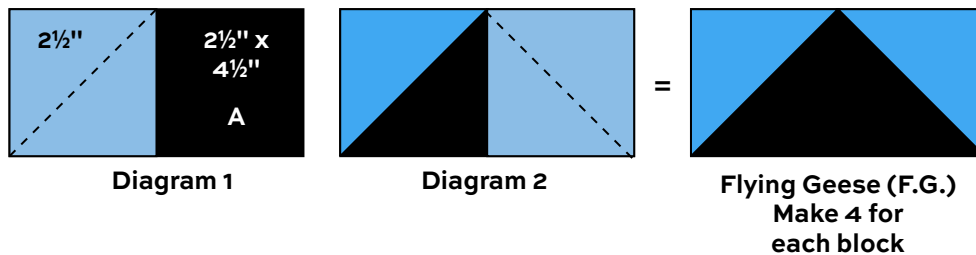
Cut (1) square 4½"

Cut (8) squares 2½"

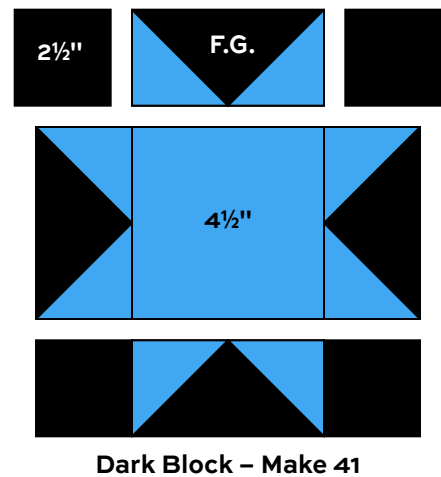
# Frosted

## Making the Quilt

1. Each blue, purple, or gray fabric is used in 1-9 blocks. Refer to the quilt photograph and count the blocks in each diagonal line to determine how many blocks you need to make of each fabric. Pay attention to the placement of Fabric A and Fabric B patches, noting that each blue/purple/gray fabric is used in either dark or light blocks.
2. Fast Flying Geese (F.G.) are used in the blocks. Draw a diagonal line on the  $2\frac{1}{2}$ " colored (blue/purple/gray) squares. Position a marked square as shown on one end of a Fabric A  $2\frac{1}{2}$ " x  $4\frac{1}{2}$ " rectangle (Diagram 1). Stitch on the marked diagonal line. Cut away the excess fabric. Press the corner up. Repeat this step on the opposite end of the rectangle (Diagram 2). Make 4 Flying Geese alike.



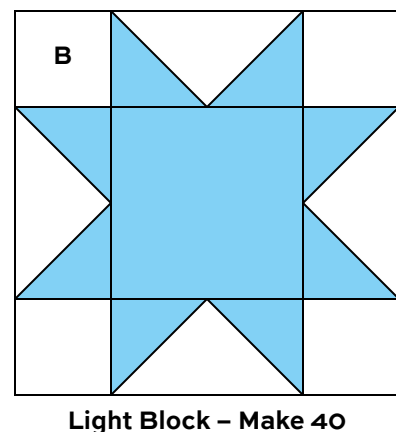
3. Referring to the Dark Block diagram, arrange 4 dark  $2\frac{1}{2}$ " squares, 4 Flying Geese, and the  $4\frac{1}{2}$ " center square in 3 rows. Press seam allowances toward the dark  $2\frac{1}{2}$ " squares and toward the center square. Be sure to rotate the F.G. as shown. Join the patches into rows, and then join the rows. The block should measure  $8\frac{1}{2}$ " square. If it does not, adjust your stitching and pressing techniques. Make 41 Dark Blocks with 9 different blue/purple fabrics in the numbers as shown in the Quilt Assembly.



4. Likewise, make 40 Light Blocks with 8 different blue/purple fabrics, and using Fabric B in place of Fabric A.
5. On a flat surface or design wall, arrange the blocks in 9 rows of 9 blocks each. Note that the dark and light blocks alternate, and colors are arranged diagonally. Stand back and look through a camera to find any blocks out of place. Once you are satisfied, join the 9 blocks in Row 1. Press seam allowances in one direction. Replace Row 1 on the design board. Join 9 blocks to make Row 2. Press seam allowances in the opposite direction. Replace the row on the design board. Continue in this manner, checking to be sure that no block is out of place, and the diagonal lines of color are correct. Press seam allowances in opposite directions in alternating rows.
6. Finally, join the rows. Press seam allowances between rows in one direction.

## Finishing the Quilt

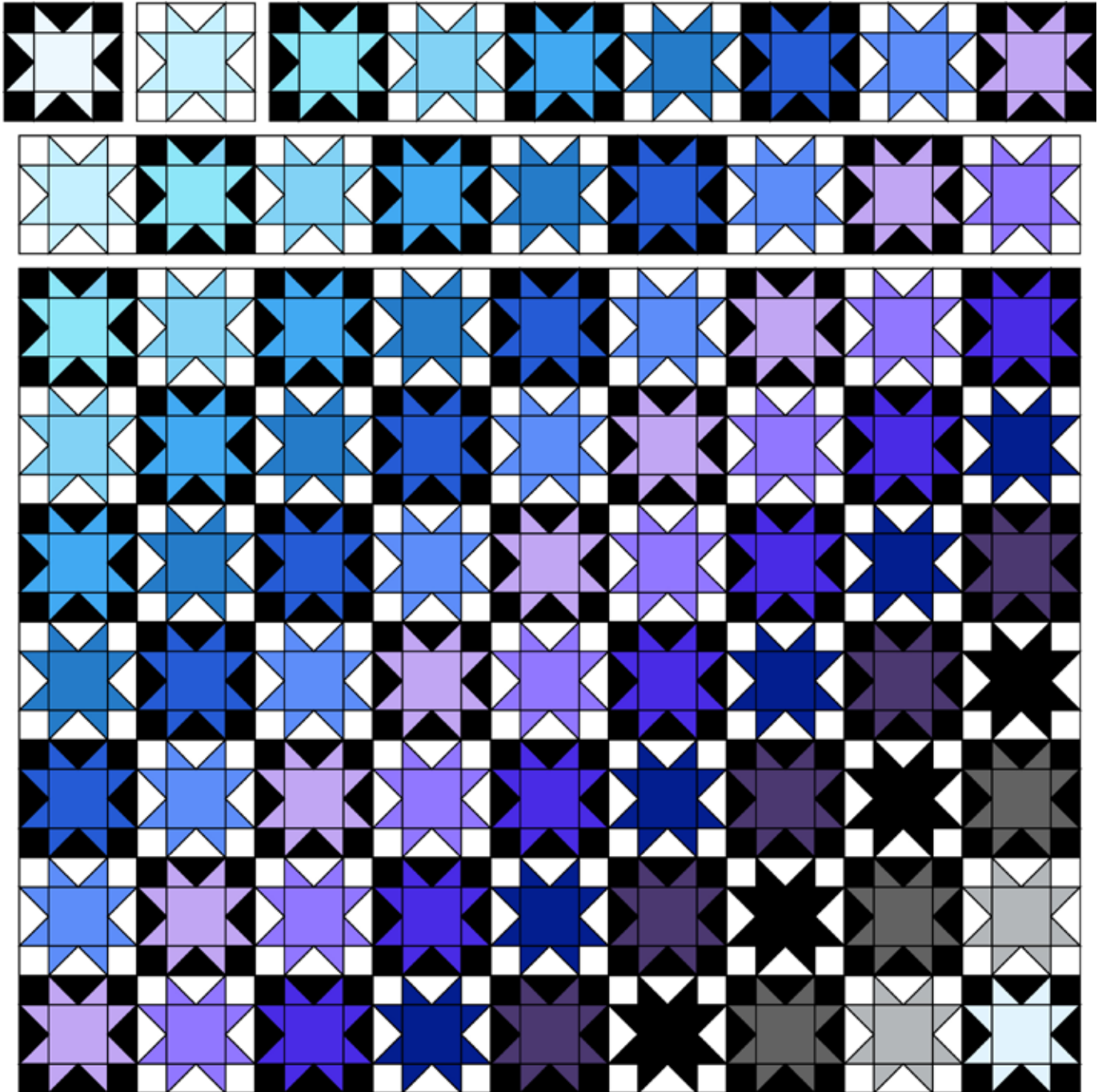
7. Layer the quilt with batting and backing and baste. Quilt in the ditch around patches. Quilt around the printed motifs in the center squares. Or, quilt an overall design. Bind to finish the quilt.





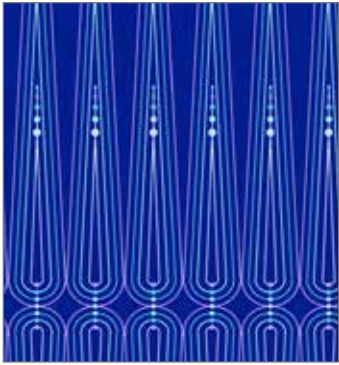
# Frosted

---

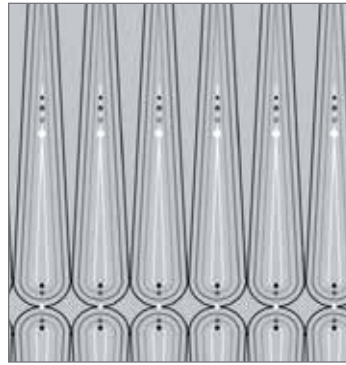


Quilt Assembly

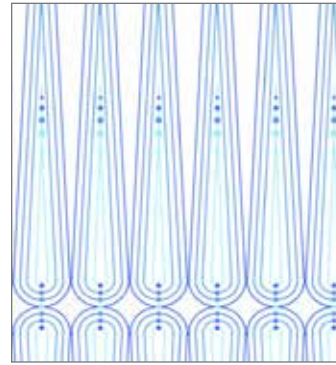
# Century Prints – Deco Frost GIUCY GIUCE



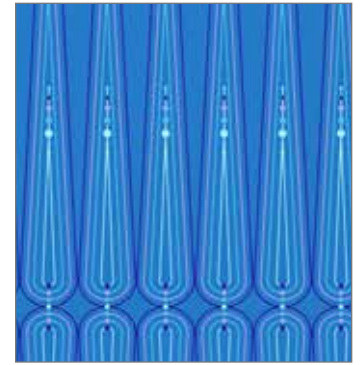
1110-B



1110-C



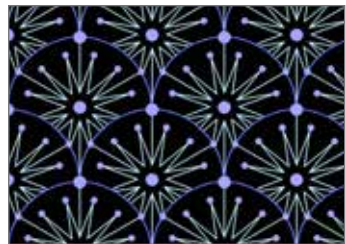
1110-L



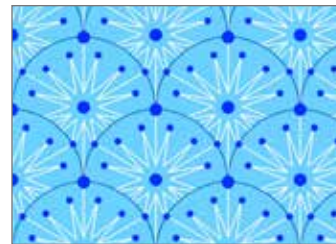
1110-LB



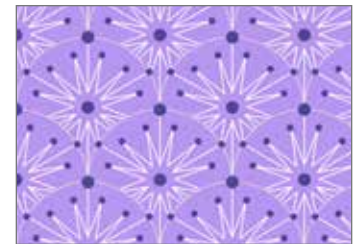
1111-B



1111-K



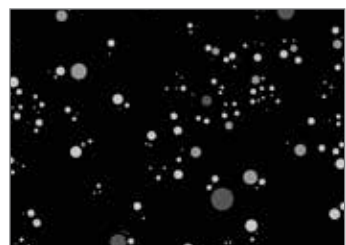
1111-LB



1111-P



1112-B



1112-K



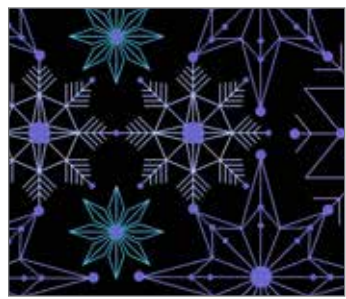
1112-LB



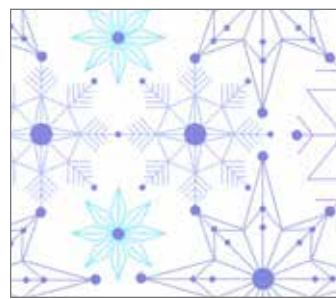
1112-P



1113-B



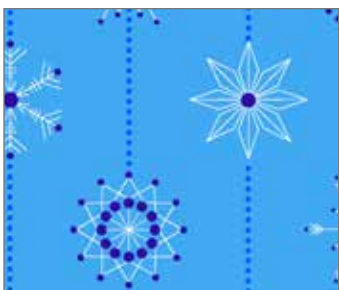
1113-K



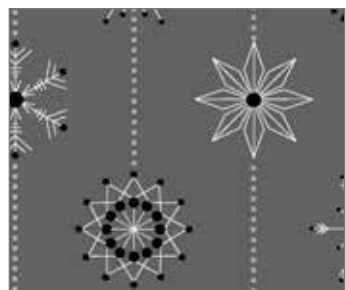
1113-L



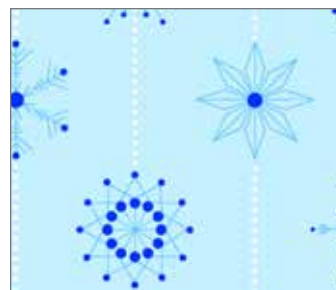
1113-LB



1114-B



1114-K



1114-LB



1114-P

All fabrics are used in quilt pattern. Fabrics shown are 50% of actual size.

Free Pattern Download Available

1384 Broadway, 24th Floor, New York, NY 10018

Tel. (800) 223-5678 • [andoverfabrics.com](http://andoverfabrics.com)