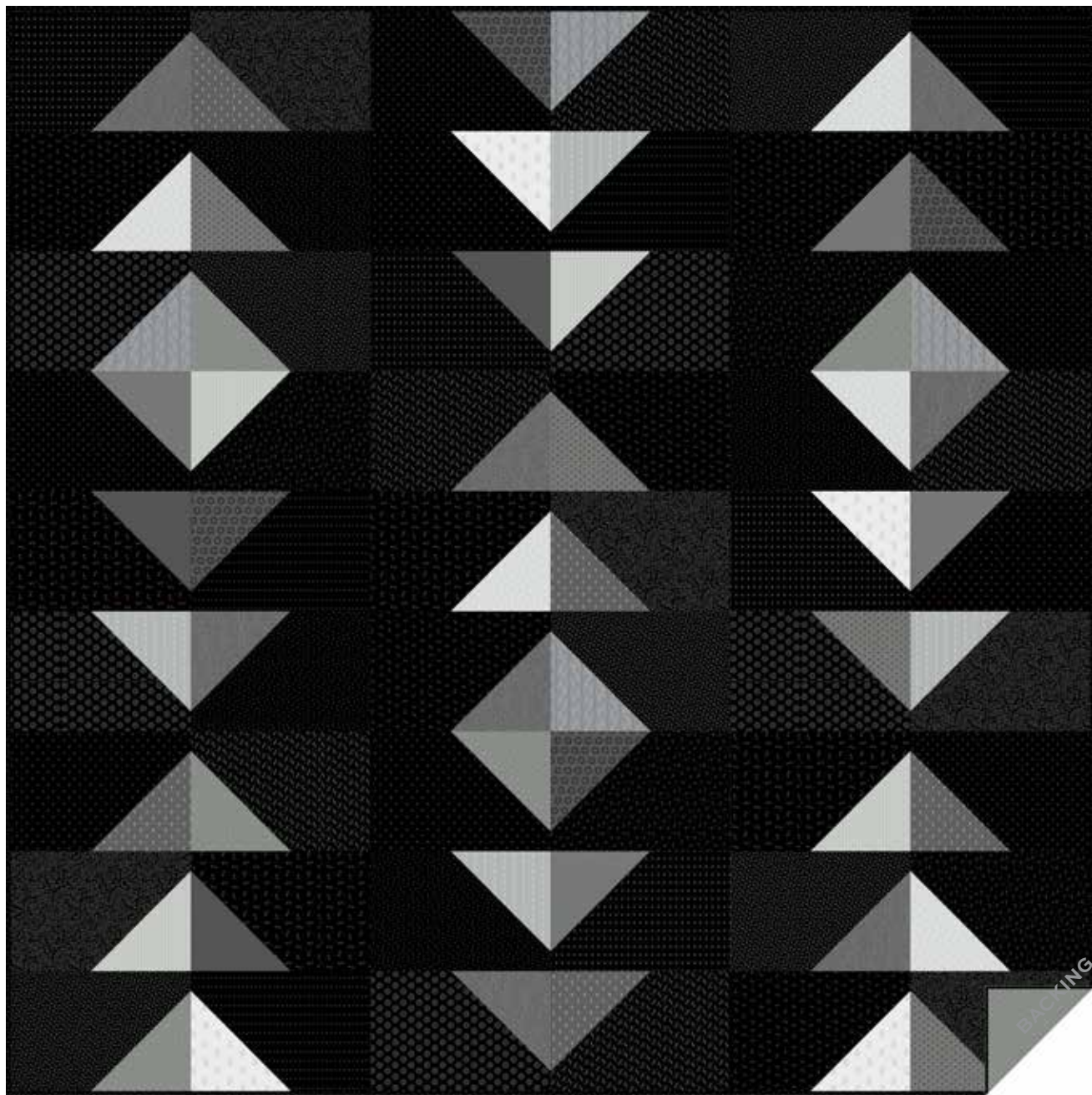


Century Black on Black II & Century Grays

ANDOVER FABRICS



After Midnight Quilt designed by: **Janet Houts**

Quilt Size: **54" x 54"** • Skill Level: **Beginner**



Free Pattern Download Available

1384 Broadway, 24th Floor, New York, NY 10018

Tel. (800) 223-5678 • andoverfabrics.com

9/15/23

After Midnight

Introducing Andover Fabrics new collection: **Century Black o Black II and Century Grays** by Andover Fabrics

Quilt designed by Janet Houts

Quilt finishes 54" x 54"

27 Blocks: 6" x 18"

A bold contrast between shades of darkest black and lightest gray makes this dramatic wall-size quilt. The triangles seem to float on the background. The design utilizes quick-piecing techniques that ensure success for even a beginning quilter.

Fabric Requirements

	Yardage	Fabric	
12 Black	blocks	3/8 yard ea.	
930-K	931-K	932-K	933-K
934-K	935-K	936-K	937-K
938-K	939-K	940-K	941-K
12 Gray	Blocks	fat 1/4 each	
918-C	919-C	920-C	921-C
922-C	923-C	924-C	925-C
926-C	927-C	928-C	929-C
Binding	1/2 yard	935-K	
Backing	3/4 yards	923-C	

Cutting Directions

Note: Read assembly directions before cutting patches. All measurements are cut sizes and include 1/4" seam allowances. A fat 1/4 is an 18" x 20"-22" cut. WOF designates the width of fabric from selvedge (approximately 42" wide).

12 Black

From each of 6 cut (5) rectangles 6 1/2" x 9 1/2"

From each of 6 cut (4) rectangles 6 1/2" x 9 1/2"

12 Gray

From each of 6 cut (5) squares 5 1/2"

From each of 6 cut (4) squares 5 1/2"

Binding

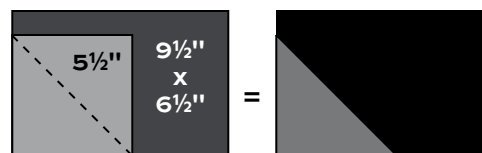
Cut (6) strips 2 1/2" x WOF for binding

Backing

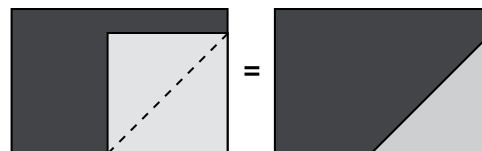
Cut (2) lengths 32" x 64", pieced to fit quilt top with overlap on all sides

Making the Quilt

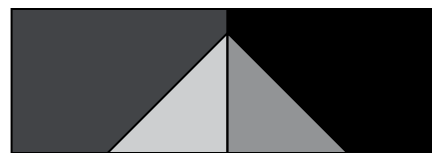
1. To preserve the scrappy look, join the fabrics in groups of 2 blacks and 2 grays. Do not use the same combination more than once.
2. The blocks use a quick stitch-and-flip piecing technique. Draw a diagonal line on the wrong side of each gray 5 1/2" square. Position a marked square as shown on one corner of a black rectangle (Unit 1 Diagram). Stitch on the marked diagonal line. Cut away the excess fabric. Press the triangle. The rectangle should measure 6 1/2" x 9 1/2". Adjust your stitching and/or pressing if needed. Repeat this step on a second different rectangle (Unit 2 Diagram). Note the placement of the gray square and the direction of the diagonal stitching line. Join the Unit 1 and Unit 2 as shown to make a block. Make 27 different blocks.



Unit 1



Unit 2



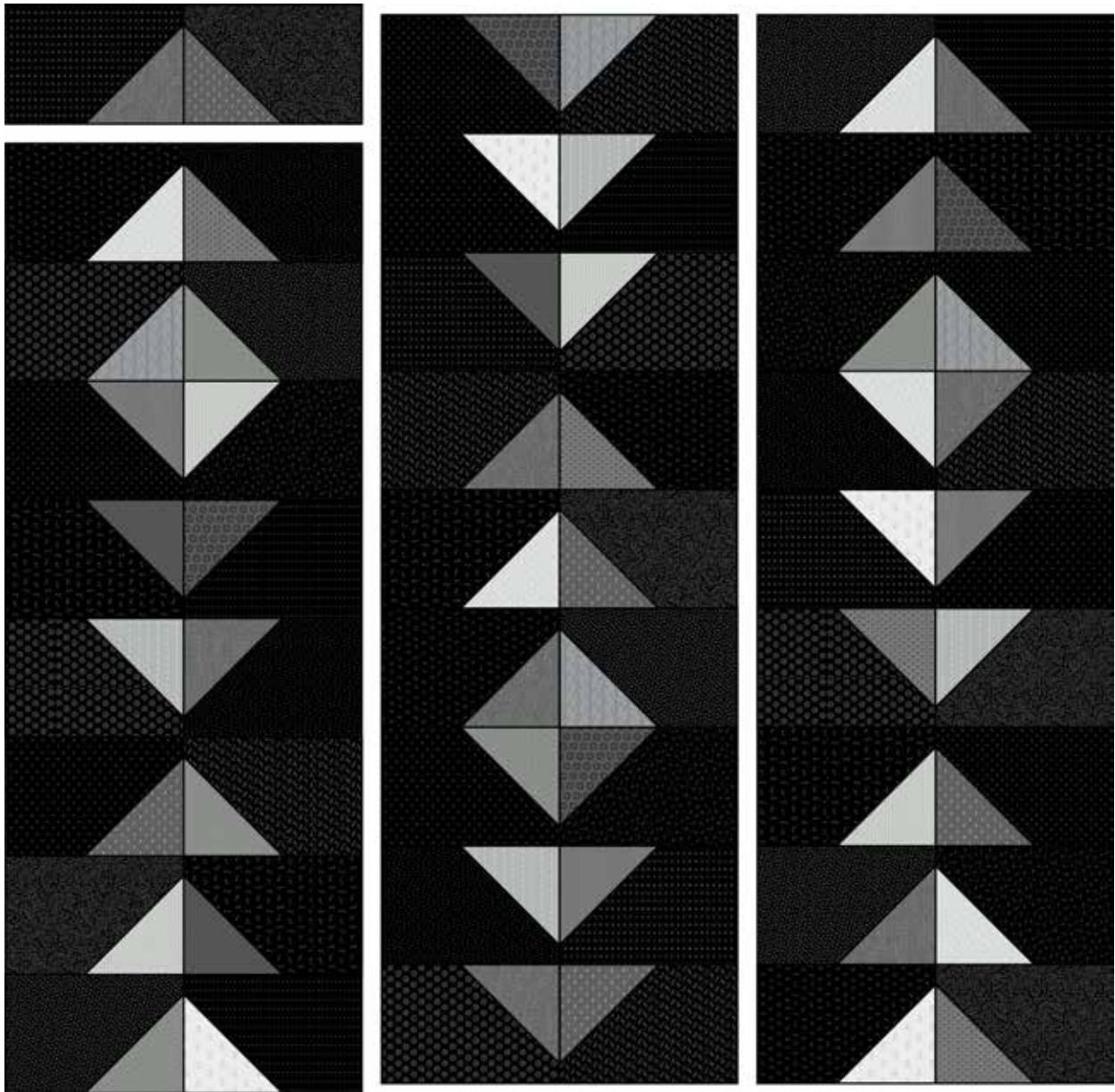
Block - Make 27

After Midnight Quilt

3. Referring to the Quilt Assembly, arrange the blocks in 3 columns of 9 blocks each, rotating the blocks to form the design. Stand back or look through a camera to be certain that the blocks are turned as shown (or as you wish). Once you are satisfied, join the blocks into 3 columns, and then join the columns.

Finishing the Quilt

4. Layer the quilt with batting and backing and baste. Quilt in the ditch around patches. Or, quilt an overall pattern. Bind to finish the quilt.



Quilt Assembly

Century Black on Black II

& Century Grays

ANDOVER FABRICS

Century Black on Black II



930-K



931-K



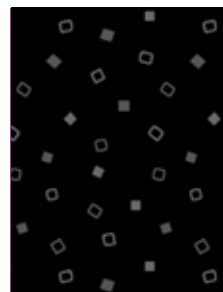
932-K



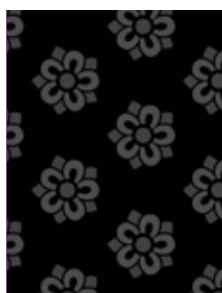
933-K



934-K



935-K



936-K



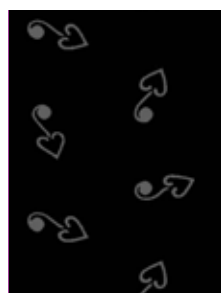
937-K



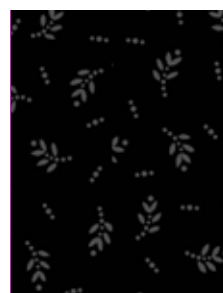
938-K



939-K



940-K



941-K

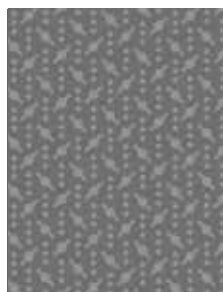
Century Grays



918-C



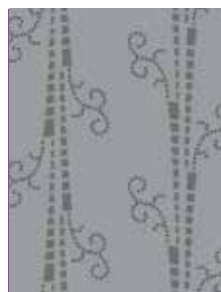
919-C



920-C



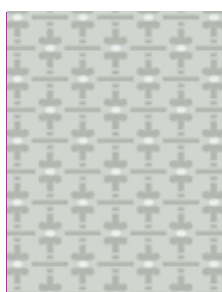
921-C



922-C



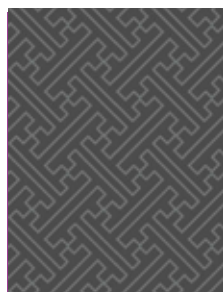
923-C



924-C



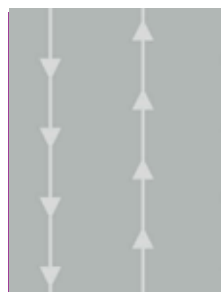
925-C



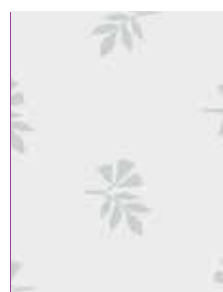
926-C



927-C



928-C



929-C

*Indicates fabrics used in quilt pattern. Fabrics shown are 100% of actual size.

Free Pattern Download Available

1384 Broadway, 24th Floor, New York, NY 10018

Tel. (800) 223-5678 • andoverfabrics.com