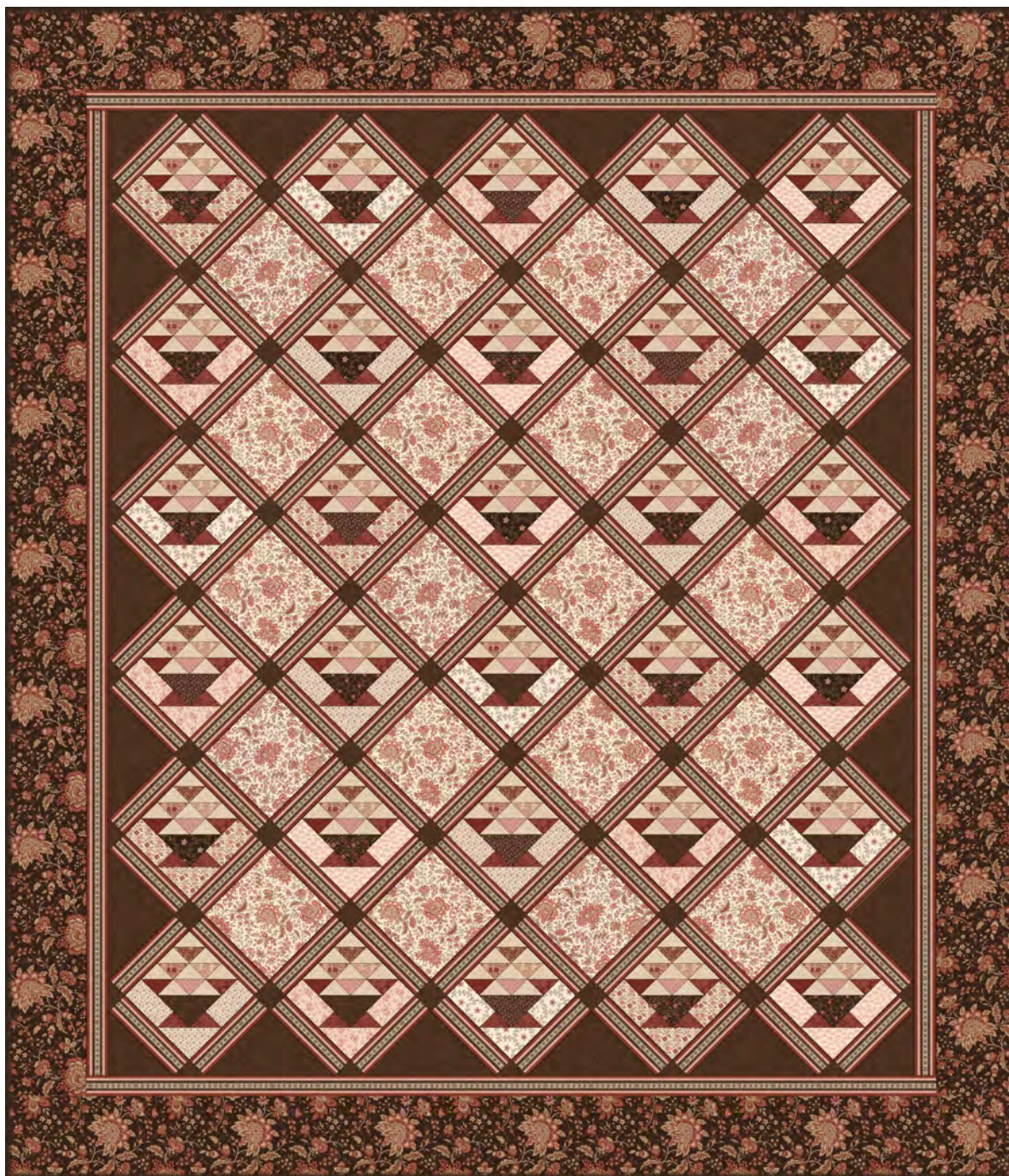


# Evelyn's Hope Chest

Fabric and Quilt by Carrie Quinn  
of Pieceful Gathering Designs

"Evie's Basket Quilt"



89" x 103"

# Evie's Basket Quilt

by Carrie Quinn ~ Pieceful Gathering Quilt Shop

Featuring Evelyn's Hope Chest Fabrics

Finished Size 89" x 103"

At our shop, we use the Studio 180 rulers by Deb Tucker for many of our shapes. We find that oversizing and trimming our pieces to the correct size helps to make our shapes more accurate, and our quilts come together better. In this pattern I have used the Tucker Trimmer I to construct the half square triangle units, and cutting instructions are oversized accordingly. You can purchase this ruler your local quilt shop or at [www.piecefulgathering.com](http://www.piecefulgathering.com). All the triangles in this quilt finish to 2", so you may wish to use your own favorite method.

## Cutting Instructions:

### Inner Border/Sashing Stripe

R101076D - Multi - Stripe

Start by cutting the Inner Borders from your Stripe fabric. Cut 4 strips the length of fabric. You will need the following, but I suggest waiting until your quilt center is complete and measure it to get the exact sizes that you need:

(2) 2 1/2" x 75 1/4"

(2) 2 1/2" x 85 3/8"

From the remainder cut Sashing Strips:

(120) 2 1/2" x 8 1/2"

### Outer Border

R101074D - Brown - Jacobean

Cut or Rip (4) 8" x LOF strips. Measure completed quilt center before cutting length

### Setting/Alternate Squares

R101074D - Cream - Jacobean

(20) 8 1/2" squares

### Setting Triangles

R101082D - Brown - Tonal Paisley Swirl

(5) 13" Squares Cross-cut twice for side setting triangles

(2) 7" Squares Cross-cut once for corner setting triangles

\* If using for **Binding**, cut (10) 2 1/2" strips, or use the extra yard to make bias binding (recommended).

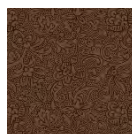
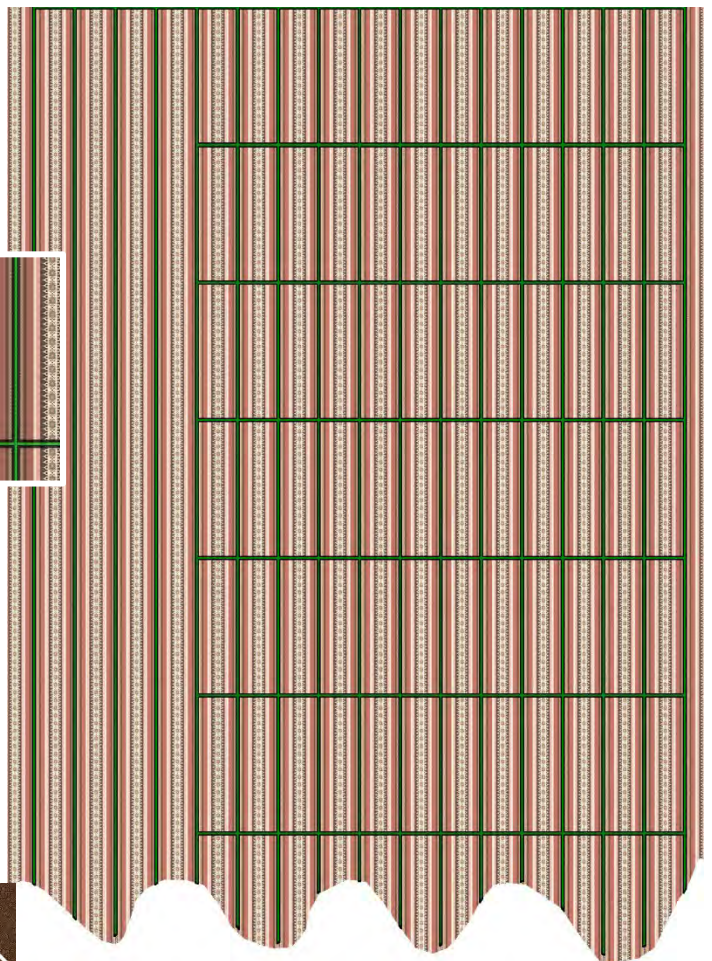
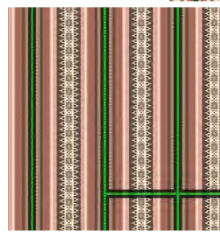
### Cornerstones

R101082D - Brown - Tonal Paisley Swirl

Cut (5) 2 1/2" strips

Subcut (71) 2 1/2" squares for cornerstones

*Cutting Diagram for Striped Fabric. Carefully cut on the beaded row.*



## Cutting for Pieced Basket Blocks – make 30 - 8” Finished Blocks

### *Creams for Block Backgrounds:*

R101075D - Cream Floral Toss, R101078D – Cream Fern & Flower Shirting, R101081D - Cream Star Flower, R101080D – Pink Bell Flower, R101083D - Pink Shell.



From each light cut the following:

(2) 2 ½” Strips – Subcut (6) 2 ½” squares and (12) 2 ½” x 4 ½” rectangles

(1) 3” Strip – Subcut (6) 3” squares

### *Browns for Baskets:*

R101075D - Brown Floral Toss, R101077D – Brown Swirling Tulips, R101078D – Brown Fern & Flower Shirting, R101081D - Brown Star Flower, R101082D - Brown Tonal Paisley Swirl.



From each Brown cut the following:

(1) 2 ½” Strip – Subcut (6) 2 ½” squares

(1) 3” Strip – Subcut (6) 3” squares

### *Red for Basket’s Bases and in Baskets:*

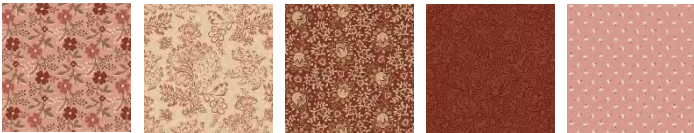
R101079D – Red Funky Leaf



(4) 3” Strips – Subcut (30) 3” squares for basket bases and (15) 3” squares to be used in baskets.

### *Triangles in Baskets:*

R101075D - Pink Floral Toss, R101079D – Beige Funky Leaf, R101080D – Red Bell Flower, R101082D – Red Tonal Paisley Swirl, R101084D - Pink Setting Leaf.



Cut from Each:

(2) 3 strips - Subcut (15) 3” squares

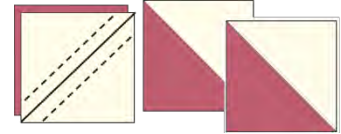


R101082D – Cream Tonal Paisley Swirl for triangles in baskets

(10) 3” strips – Subcut (120) 3” squares

## Construction:

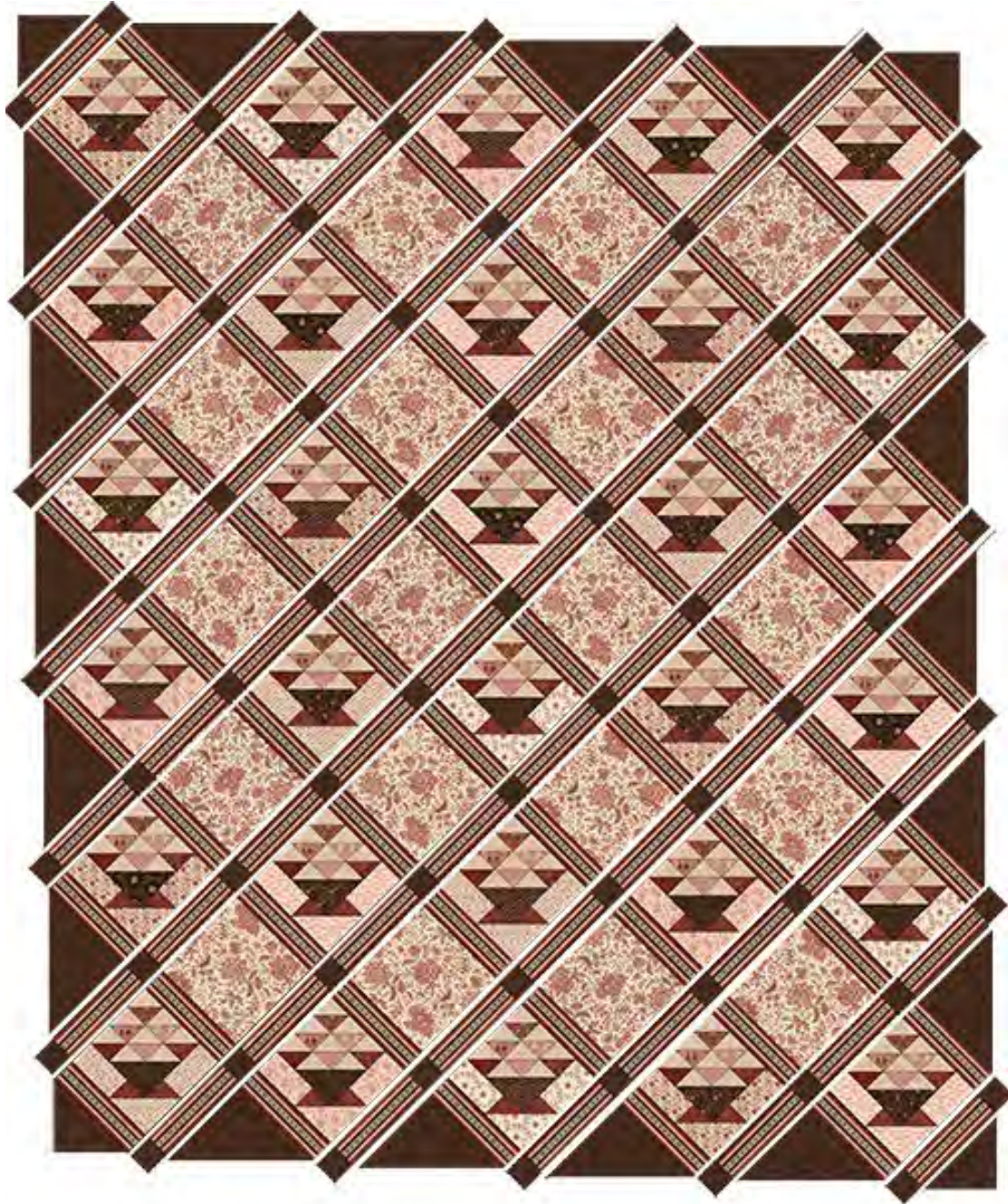
1. Using the 3" squares of Cream Tonal Paisley Swirl, (15) 3" squares of each of the basket fabrics, make 180 Half Square Triangles (30 of each color). Draw a diagonal line on the wrong side of the Cream Tonal squares and place right sides together with the pink & red squares. Sew  $\frac{1}{4}$ " on both sides of the line and cut apart on the line to create 180 half square triangles (30 of each color combination). Press to the darker fabric. Trim to  $2\frac{1}{2}$ " using the Deb Tucker Trimmer I.
2. Use the same method to make 60 Half Square Triangles using the remaining 3" squares of the Cream Tonal Paisley Swirl and (30) 3" squares of the browns (6 of each brown).
3. Use the same method again to make 60 Half Square Triangles using the remaining 3" squares of the Red Funky Leaf and (30) 3" squares of the cream background fabrics (6 of each).
4. Assemble 30 blocks as shown below using 6 different color HST's from Step 1, 2 Brown HST's from Step 2, and 2 red HST's from Step 3. Complete the block with coordinating background pieces and brown  $2\frac{1}{2}$ " square.
5. I suggest that you sew the basket portion of the block first, and then add the background/base pieces. You should have 30 pieced blocks that measure  $8\frac{1}{2}$ " square to finish to 8".



6. You can now put your quilt together. Following the Construction Diagram on the next page, construct rows of blocks with  $8\frac{1}{2}$ " Stripe sashing strips, and rows of sashing strips with Brown Tonal Paisley Swirl cornerstone blocks. Put side setting triangles of the Brown Tonal Paisley Swirl at the ends of the block rows and corner setting triangles in the corners. Please note that I have used squares of the cornerstone at the ends of the rows, and that the setting triangles are slightly oversized. Once your entire center is put together, trim to  $\frac{1}{4}$ " outside of the corners of the blocks.
7. Measure your completed quilt center on both sides and down the center. Average those numbers and cut your side stripe inner border strips to that length and sew to the sides of the quilt pinning carefully to ease as needed. Use the same method to add your top and bottom inner border strips.
8. Using the same method, measure and add your side Brown Jacobean border strips and then, finally, add your top and bottom border strips.
9. Quilt as desired and bind.



**Quilt Assembly:**



*Pieceful Gathering Designs*

*Pieceful Gathering Quilt Shop*

*106 Northwest Highway*

*Fox River Grove, IL 60021*

*(847) 516-7911*

*[www.piecefulgathering.com](http://www.piecefulgathering.com)*



*Pieceful Gathering Designs © Copyright 2024 \* Carrie Quinn*

*All rights reserved. This pattern is for your personal use. Reproducing this pattern to sell, or making quilts using this pattern for profit, is prohibited under American copyright laws.*

# Fabric Requirments for Evie's Basket Quilt by Carrie Quinn

## *Finished Size 89" x 103"*

	<b>Yards Needed</b>	<b>SKU</b>
	1	R101082D Cream Tonal Paisley Swirl
	3/8	R101075D Cream Floral Toss
	3/8	R101079D Red Funky Leaf
	1/4	R101080D Red Bell Flower
	1/4	R101075D Pink Floral Toss
	1/2	R101082D Red Tonal Paisley Swirl
	1/4	R101079D Beige Funky Leaf
	1/4	R101084D Pink Setting Leaf
	1/4	R101075D Brown Floral Toss
	3/8	R101081D Cream Star Flower
	1/4	R101077D Brown Swirling Tulips
	3/8	R101080D Pink Bell Flower
	1/4	R101078D Brown Fern & Floral Shirting
	3/8	R101078D Cream Fern & Floral Shirting
	1/4	R101081D Brown Star Flower
	3/8	R101083D Pink Shell
	1 + 1/2	R101082D Brown Tonal Paisley Swirl
	1 + 1/2	R101074D Cream Jacobean
	2 + 7/8	R101076D Multi Stripe
	2 + 7/8	R101074D Brown Jacobean

***Binding - 7/8 yard***

***Backing - 44/45" 8 1/4 yards OR Wide - 108" 3 1/4 yards***