

# At Day's End

SARAH J. MAXWELL



Dusk Settles Quilt designed by: **Sarah J. Maxwell**  
Quilt Size: **85" x 85"** • Skill Level: **Advanced Beginner**

# Dusk Settles

Introducing Andover Fabrics new collection: **At Day's End**  
by Sarah J. Maxwell. Quilt designed by Sarah J. Maxwell

Quilt finishes 85" x 85"  
25 Blocks finish 12" x 12"

*An appealing mix of elegant paisley, floral, and geometric prints make up the stars that are arranged in a medallion setting. The darker central blocks are surrounded by lighter blocks for this eye-catching design. Some piecing experience will be useful.*

## Cutting Directions

**Note:** Read assembly directions before cutting patches. All measurements are cut sizes and include ¼" seam allowances. A fat ⅛ is a 9" x 20"-22" cut of fabric. A fat ¼ is an 18" x 22" cut. WOF designates the width of fabric from selvedge (approximately 42" wide).

**Note:** Yardage for the fat ¼ and ½ yard prints is generous to allow for switching fabrics if you desire to do so.

### Cutting for ONE BLOCK:

Fabric B or Y:

Cut (2) squares 4¼", cut in half diagonally twice to make 8 quarter-square triangles

Cut (4) corner squares 3½"

Center patch:

Cut (1) square 4¾"

Center triangles:

Cut (2) squares 3⅞", cut in half diagonally to make 4 half-square triangles

Side squares on point

Cut (4) squares 2⅝"

Star Points

Cut (2) squares 4¼", cut in half diagonally twice to make 8 quarter-square triangles

8 Triangles

Cut (2) squares 4¼", cut in half diagonally twice to make 8 quarter-square triangles

### Fabric A

Cut (12) squares 4¾" for block centers

### Fabric B

Cut (32) squares 4¼", cut in half diagonally twice to make 128 quarter-square triangles

Cut (64) squares 3½"

### Fabric C

Cut (8) squares 4¾" for block centers

### Fabric D

Cut (8) squares 4¾" for block centers

## Fabric Requirements

	Yardage	Fabric
<b>Fabric A</b>	blocks	fat ¼
<b>Fabric B</b>	blocks	1¼ yards
<b>Fabric C</b>	blocks	fat ¼
<b>Fabric D</b>	blocks	fat ¼
<b>Fabric E</b>	blocks	½ yard
<b>Fabric F</b>	blocks	½ yard
<b>Fabric G</b>	blocks	fat ¼
<b>Fabric H</b>	blocks	½ yard
<b>Fabric J</b>	blocks	fat ¼
<b>Fabric M</b>	blocks	½ yard
<b>Fabric O</b>	set	1½ yards
<b>Fabric P</b>	blocks	fat ¼
<b>Fabric S</b>	blocks	fat ¼
<b>Fabric T</b>	blocks	fat ¼
<b>Fabric U</b>	blocks	fat ¼
<b>Fabric V</b>	blocks	½ yard
<b>Fabric X</b>	blocks	fat ¼
<b>Fabric Y</b>	blocks	2 yards
<b>Fabric Z</b>	blocks	fat ¼
<b>Fabric AA</b>	blocks	¾ yard
<b>2 Orchid</b>	blocks	½ yard each
Fabrics I, W		
<b>6 Fat ¼</b>	blocks	fat ¼ each
Fabrics K, L, N, Q, R, BB		
<b>Binding</b>		¾ yard
<b>Backing</b>		8 yards

### Fabric E

Cut (16) squares 3⅞", cut in half diagonally to make 32 half-square triangles

Cut (48) squares 2⅝"

### Fabric F

Cut (10) squares 3⅞", cut in half diagonally to make 20 half-square triangles

Cut (32) squares 2⅝"

### Fabric G

Cut (16) squares 3⅞", cut in half diagonally to make 32 half-square triangles

### Fabric H

Cut (24) squares 4¼", cut in half diagonally twice to make 96 quarter-square triangles

### Fabric J

Cut (32) squares 2⅝"

### Fabric M

Cut (24) squares 3⅞", cut in half diagonally to make 48 half-square triangles

# Dusk Settles Quilt

## Fabric O

Cut (4) squares 19", cut in half diagonally twice to make 16 quarter-square triangles  
Cut (2) squares 10", cut in half diagonally to make 4 half-square triangles

## Fabric P

Cut (16) squares 2<sup>5</sup>/<sub>8</sub>"

## Fabric S

Cut (4) squares 4<sup>3</sup>/<sub>4</sub>" for block centers

## Fabric T

Cut (5) squares 4<sup>3</sup>/<sub>4</sub>" for block centers

## Fabric U

Cut (4) squares 4<sup>3</sup>/<sub>4</sub>" for block centers

## Fabric V

Cut (16) squares 4<sup>1</sup>/<sub>4</sub>", cut in half diagonally twice to make 64 quarter-square triangles  
Cut (16) squares 2<sup>5</sup>/<sub>8</sub>"

## Fabric X

Cut (16) squares 2<sup>5</sup>/<sub>8</sub>"

## Fabric Y

Cut (50) squares 4<sup>1</sup>/<sub>4</sub>", cut in half diagonally twice to make 200 quarter-square triangles  
Cut (100) squares 3<sup>1</sup>/<sub>2</sub>"

## Fabric Z

Cut (16) squares 3<sup>7</sup>/<sub>8</sub>", cut in half diagonally to make 32 half-square triangles  
Cut (4) squares 2<sup>5</sup>/<sub>8</sub>"

## Fabric AA

Cut (40) squares 4<sup>1</sup>/<sub>4</sub>", cut in half diagonally twice to make 160 quarter-square triangles

## 2 Orchid

 From each:

Cut (18) squares 4<sup>1</sup>/<sub>4</sub>", cut in half diagonally twice to make 72 quarter-square triangles from each

## 6 Fat ¼

 From each:

Cut (8) squares 4<sup>1</sup>/<sub>4</sub>", cut in half diagonally twice to make 32 quarter-square triangles from each

## Binding

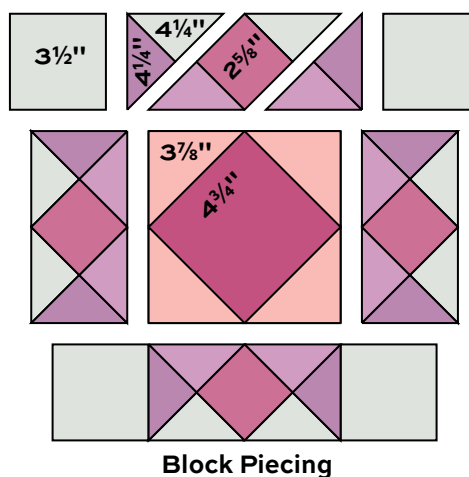
Cut (9) strips 2<sup>1</sup>/<sub>2</sub>" x WOF for binding

## Backing

Cut (3) lengths 32" x 95", pieced to fit quilt top with overlap on all sides

## Making the Quilt

1. Note that Blocks 4, 5, and 6 in the center of the quilt are darker than those around the outer edges. If you switch out fabrics, be sure to make Blocks 1 and Blocks 2 with the lightest prints. Refer to Cutting for ONE BLOCK and the individual block diagrams. Select the appropriate triangles and squares for Block 1. Arrange the patches in 3 horizontal rows as shown in the Block Piecing diagram.
2. Fold the 3<sup>7</sup>/<sub>8</sub>" triangles in half to find the middle of the long side. Mark with a pin. Likewise, fold the 4<sup>3</sup>/<sub>4</sub>" center square to find the middle of each side and mark with pins. Matching centers, sew a 3<sup>7</sup>/<sub>8</sub>" triangle to each side of the center square. Press seam allowances away from the center square. The unit should measure 6<sup>1</sup>/<sub>2</sub>" square from edge to edge. If it does not, adjust your stitching and/or pressing. Set aside.
3. Join the quarter-square triangles and the 2<sup>5</sup>/<sub>8</sub>" squares to make 4 side units. The units should measure 3<sup>1</sup>/<sub>2</sub>" x 6<sup>1</sup>/<sub>2</sub>". Sew side units to opposite sides of the center unit. Sew 3<sup>1</sup>/<sub>2</sub>" squares to the ends of the remaining side units. Sew to the top and bottom of the center. The block should measure 12<sup>1</sup>/<sub>2</sub>" square.
4. Refer to the block diagrams to select fabric for each block. Follow steps above to make the number of blocks listed, 41 blocks total.



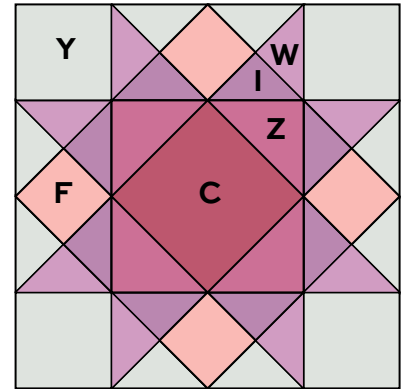
# Dusk Settles Quilt

5. Refer to the Quilt Assembly. Arrange the blocks in diagonal rows. Add Fabric O quarter-square triangles to ends of rows. Stand back or look through a camera to be certain that the blocks are in the correct order. Once you are satisfied, join the blocks into rows, and then join the rows. Sew a Fabric O 10" half-square triangle to each corner.

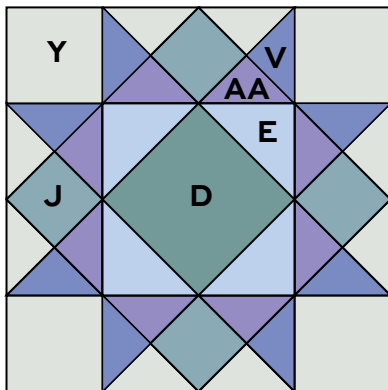
## Finishing the Quilt

6. Layer the quilt with batting and backing and baste. Quilt in the ditch around patches. Quilt the Fabric O triangles as you wish. Bind to finish the quilt.

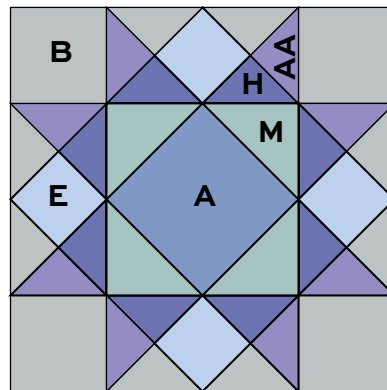
**Note: The alphabet letters refer to the labels on the Block diagrams on page 4 and the fabric thumbnail sheet on page 6.**



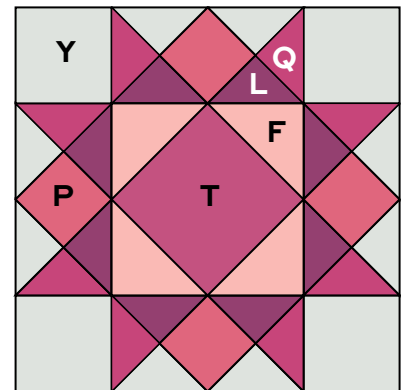
Block 1 – Make 8



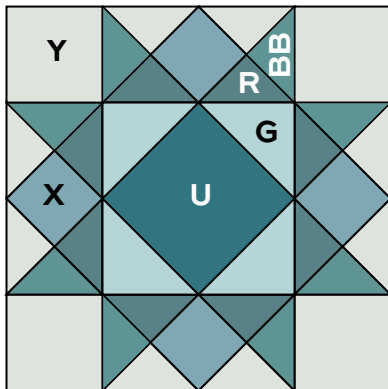
Block 2 – Make 8



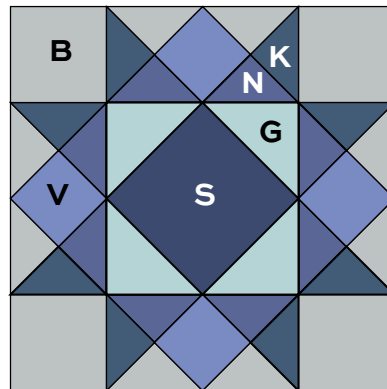
Block 3 – Make 12



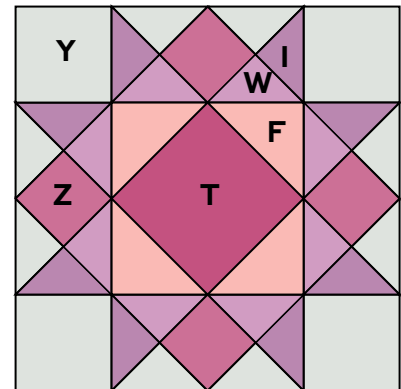
Block 4 – Make 4



Block 5 – Make 4

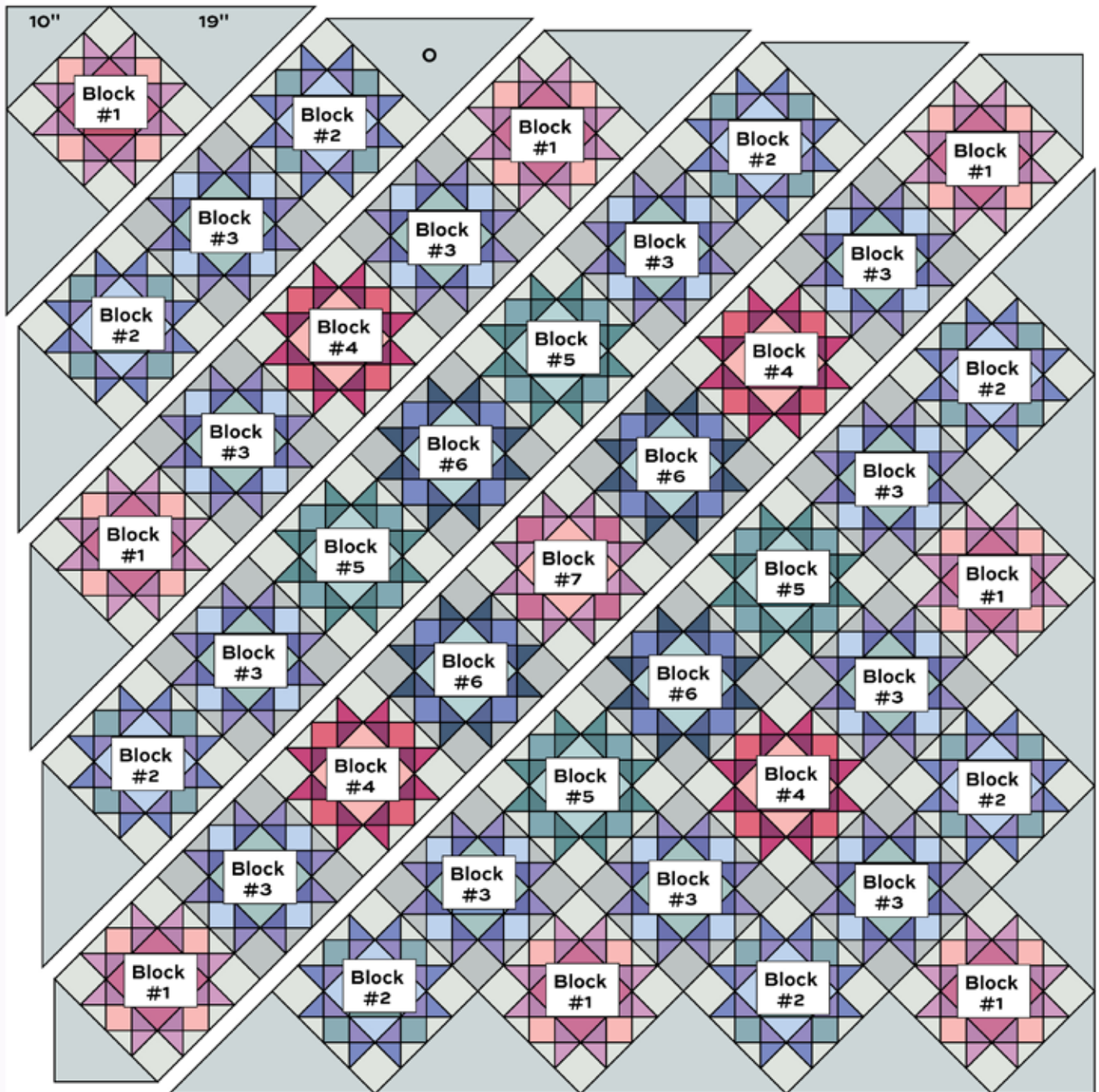


Block 6 – Make 4



Block 7 – Make 1

# Dusk Settles Quilt



Quilt Assembly

# At Day's End

SARAH J. MAXWELL



1092-B



1092-C



1092-E



1092-T



1093-B



1093-E



1093-T



1094-B



1094-P



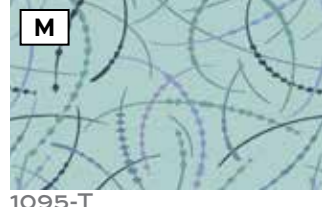
1094-T



1095-B



1095-P



1095-T



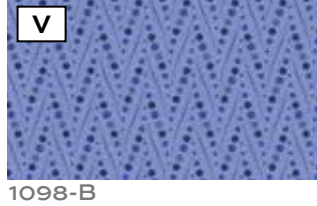
1097-B



1097-E



1097-T



1098-B



1098-P



1098-T



1096-B



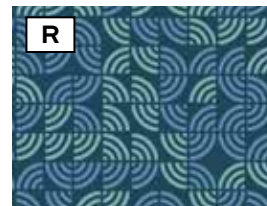
1096-C



1096-E



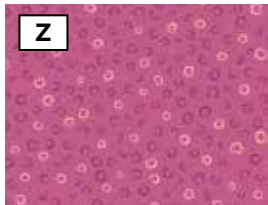
1096-P



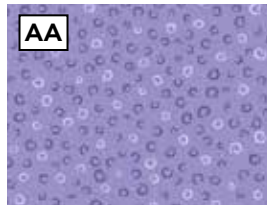
1096-T



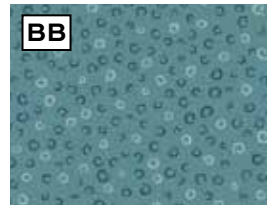
1099-C



1099-E



1099-P



1099-T

All fabrics are used in quilt pattern.  
Fabrics shown are 50% of actual size.