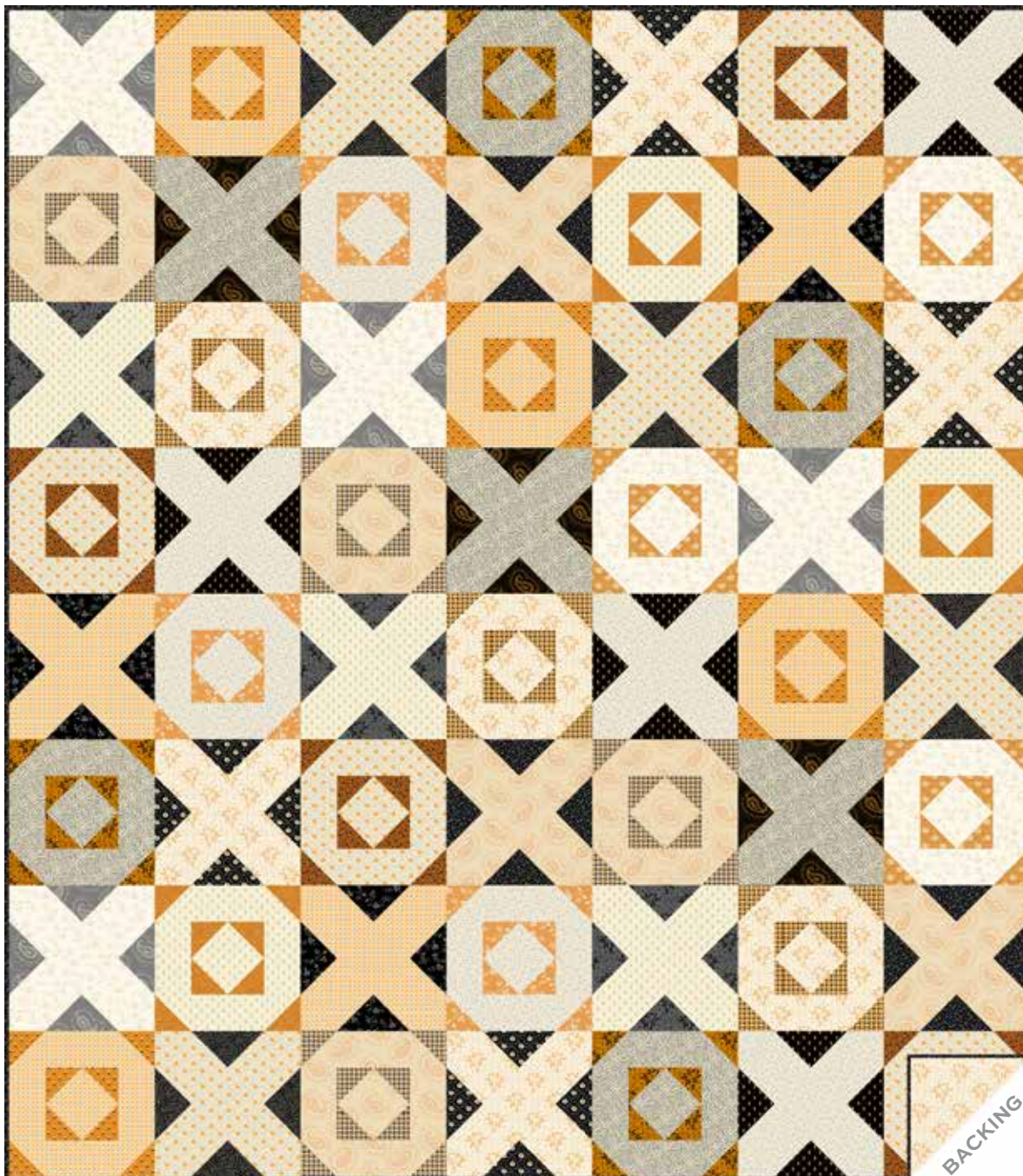


# Pumpkin Licorice

ANDOVER FABRICS



Candy Shop Quilt designed by: **Janet Houts**  
Quilt Size: **56" x 64"** • Skill Level: **Beginner**

# Candy Shop

Introducing Andover Fabrics new collection: **PUMPKIN LICORICE** by Andover Fabrics

Quilt designed by Janet Houts

Quilt finishes 54" x 64"

28 Block Y: 10" x 10"

28 Block Z: 10" x 10"

*What a delightful combination of neutral blacks, grays, and creams, spiced with touches of soft oranges. The two-block design is so quick to make that you can be smuggling under this lap quilt in no time.*

## Cutting Directions

**Note:** Read assembly directions before cutting patches.

All measurements are cut sizes and include 1/4" seam allowances. A fat 1/4 is an 18" x 20"-22" cut. WOF designates the width of fabric from selvedge (approximately 42" wide).

### Cutting for ONE Block Y

**Light:** Cut (4) squares 4 1/2"

**Dark:** Cut (8) squares 2 1/2"

### Cutting for ONE Block Z

**Light:** Cut (1) square 4 1/2"

Cut (2) squares 3" (or 2 7/8") for HST (Read Step 3)

Cut (4) rectangles 2 1/2" x 4 1/2"

**Orange:** Cut (4) squares 2 1/2"

Cut (2) squares 3" (or 2 7/8") for HST

### Cutting for entire quilt:

**8 Lights** From each:

Cut patches required for 3 or 4 Block Y

Cut patches required for 3 or 4 Block Z

**8 Darks** From each:

Cut patches required for 3 or 4 Block Y

**8 Oranges** From each:

Cut patches required for 3 or 4 Block Z

### Binding

Cut (7) strips 2 1/2" x WOF for binding

### Backing

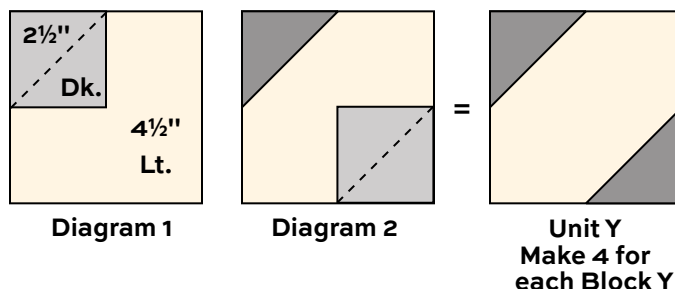
Cut (2) lengths 38" x 66", pieced to fit quilt top with overlap on all sides

## Fabric Requirements

		Yardage	Fabric	
<b>8 Lights</b>	blocks	1/2 yard ea.		
	1100-L	1101-L	1102-L	1103-L
	1104-L	1105-L	1106-L	1107-L
<b>8 Darks</b>	blocks	fat 1/4 each		
	1100-K	1101-K	1102-C	1102-K
	1103-C	1104-K	1105-K	1106-K
<b>8 Orange</b>	blocks	fat 1/4 each		
	1100-O	1101-O	1103-O	1104-O
	1105-O	1106-O	1107-C	1107-O
<b>Binding</b>		1/2 yard	1105-K	
<b>Backing</b>		3 3/4 yards	1103-L	

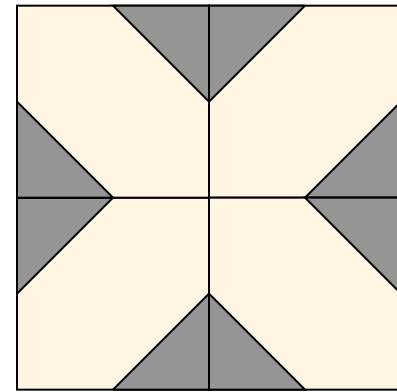
## Making the Quilt

1. The blocks are scrappy, so feel free to mix the light, dark, and orange prints in any combination you wish. Choose 2 fabrics for each block. In the quilt shown, 3 or 4 blocks are made alike. Refer to the quilt photograph to duplicate the combinations, or choose your own.
2. Block Y is made with 4 units with a stitch-and-flip technique. Draw a diagonal line on each Dark 2 1/2" square. Position a marked square as shown on one corner of a Light 4 1/2" square (Diagram 1). Stitch on the marked diagonal line. Cut away the excess fabric. Press the corner up. Repeat this step on the opposite corner (Diagram 2). Make 4 Unit Y alike for each Block Y.

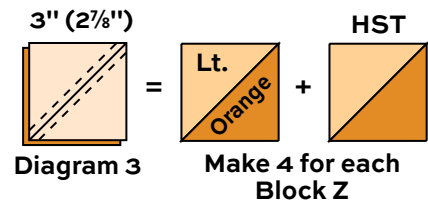


# Candy Shop

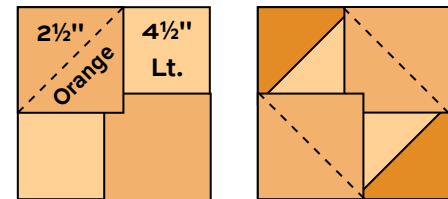
- Referring to the Block Y diagram, join the 4 units to make a square, rotating the units as shown. Make a total of 28 Block Y.
- Block Z is made with half-square triangles (HST). Use your favorite method to make HST that finish 2", or follow these directions. Squares cut 3" will be trimmed after stitching. Cut the squares 2 7/8" if you do not wish to trim later. Draw a diagonal line on the wrong side of the 3" Light squares. With right sides together, position the marked square on top of an Orange square. Stitch 1/4" on each side of the diagonal line (Diagram 3). Cut apart on the drawn line. Press the seam allowance toward the darker fabric. Make 4 HST alike for each Block Z.
- The Center Unit of Block Z uses the same stitch-and-flip technique as described in Step 2. Refer to Diagrams 4 and 5 to stitch Orange 2 1/2" squares to each corner of a Light 4 1/2" square. Press the seam allowances away from the center. Make 1 Center Unit for each Block Z.
- Refer to the Block Z diagram. Join 4 HST, a Center Unit, and 4 Light rectangles into 3 rows. Press the seam allowances toward the Light rectangles. Join the rows.
- Using a design wall or large flat surface, arrange the blocks in 8 rows, with 7 blocks in each row. Note that odd-numbered rows have 4 Block Y and 3 Block Z. Even-numbered rows have 4 Block Z and 3 Block Y. Shift the blocks so that the same print does not touch itself in adjacent rows. Once you are satisfied, join the blocks into rows, and then join the rows.



**Block Y – Make 28**

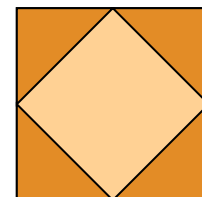


**Diagram 3** Make 4 for each Block Z

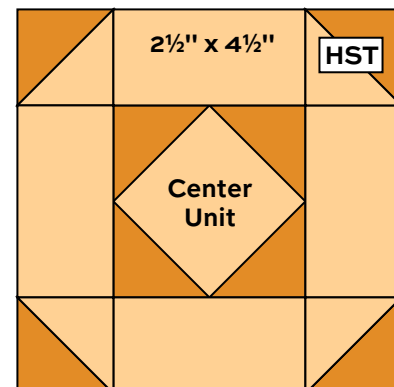


**Diagram 4**

**Diagram 5**



**Center Unit**  
Make 1 for each Block Z



**Block Z – Make 28**

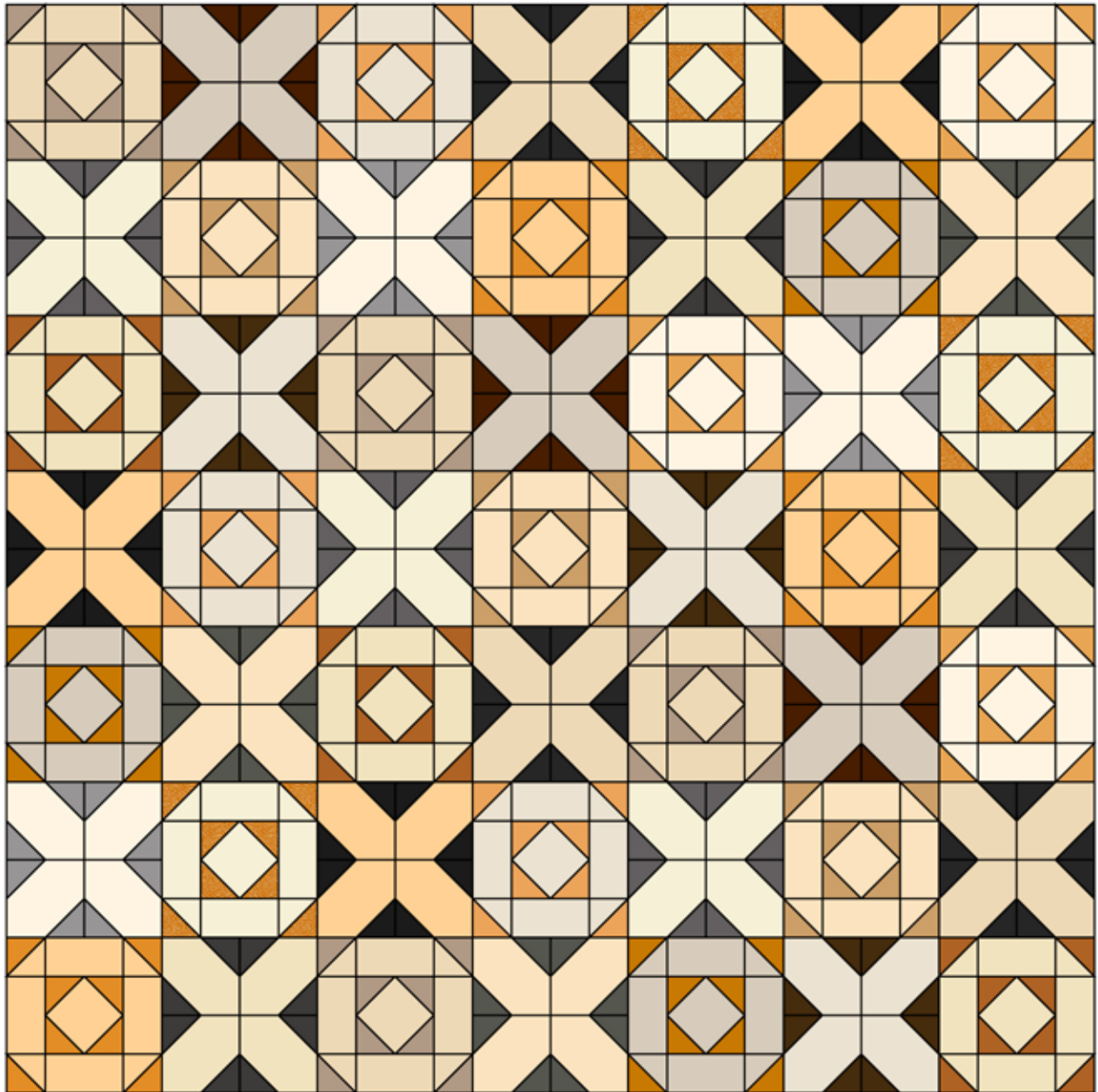
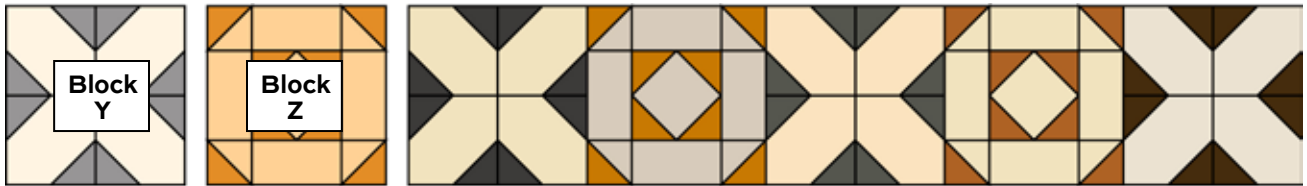
## Finishing the Quilt

- Layer the quilt with batting and backing and baste. Quilt in the ditch around patches. Quilt around the printed motifs in the Light patches in each Block Y. Bind to finish the quilt.



# Candy Shop

---



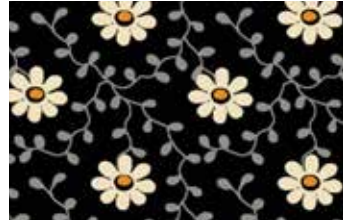
Quilt Assembly

# Pumpkin Licorice

ANDOVER FABRICS



1100-K



1101-K



1102-C



1103-C



1100-L



1101-L



1102-K



1103-L



1100-O



1101-O



1102-L



1103-O



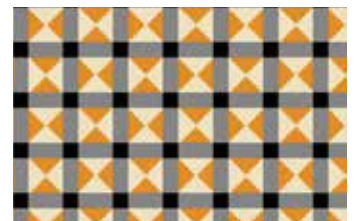
1104-K



1105-K



1106-K



1107-C



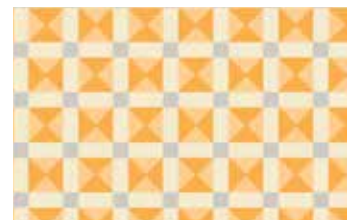
1104-L



1105-L



1106-L



1107-L



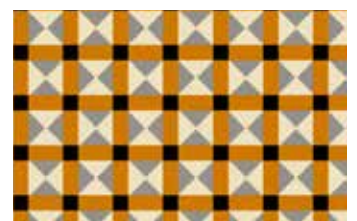
1104-O



1105-O



1106-O



1107-O

All fabrics are used in quilt pattern. Fabrics shown are 100% of actual size.

 andover : [makower uk](http://makower.uk)

Free Pattern Download Available

1384 Broadway, 24th Floor, New York, NY 10018

Tel. (800) 223-5678 • [andoverfabrics.com](http://andoverfabrics.com)

9/15/23