

Flutter

KIM SCHAEFER



Butterflies in Bloom Quilt designed by: **Kim Schaefer**

Quilt Size: **72" x 85"** • Skill Level: **Beginner**

Butterflies in Bloom

Introducing Andover Fabrics new collection: **Flutter** by Kim Schaefer

Quilt designed by Kim Schaefer

Quilt finishes 72" x 85"

Fanciful butterflies and whimsical posies make this a fun scrappy quilt, easy enough for a beginning quilter. A touch of black print adds a bit of drama.

Cutting Directions

Note: Read assembly directions before cutting patches. All measurements are cut sizes and include ¼" seam allowances. A fat ¼ is an 18" x 20" -22" cut. Borders and sashes are cut the exact lengths required plus ¼" seam allowances. WOF designates the width of fabric from selvedge (approximately 42" wide).

Fabric A

Cut (4) strips 3½" x 41" cut lengthwise and pieced to make the following:
2 side borders 3½" x 79½" (Read Step 1 first)
Cut (4) strips 3½" x 38", cut lengthwise and pieced to make the following:
2 top/bottom borders 3½" x 72½"

Fabric B

Cut (4) strips 2½" x 39", cut lengthwise and pieced to make the following:
2 side borders 2½" x 75½"
Cut (4) strips 2½" x 35", cut lengthwise and pieced to make the following:
2 top/bottom borders 2½" x 66½"

7 Solids

From each:
Cut (2) strips 2½" x WOF, pieced to make the following:
1 sash 2½" x 75½" (Read Step 1 first)

20 Brights

From each:
Cut (10) rectangles 3½" x 6½"

Binding

Cut (8) strips 2½" x WOF for binding

Backing

Cut (2) lengths 41" x 95", pieced to fit quilt top with overlap on all sides

Fabric Requirements

		Yardage	Fabric	
Fabric A	border	1¼ yards	1037-K	
Fabric B	border	1¼ yards	1037-L	
7 Solids	sashes	¼ yard ea.		
	CS-10-Bubble	CS-10-Carrot	CS-10-Orchid	
	CS-10-Pear	CS-10-Red	CS-10-Sapphire	
	CS-10-Sunshine			
20 Brights	fat	¼ each		
	1033-B	1033-L	1033-T	1034-K 1034-L
	1034-Y	1035-B	1035-E	1036-B 1036-E
	1036-G	1036-K	1036-L	1036-T 1036-Y
	1037-B	1037-E	1037-G	1037-O 1037-T
Binding		⅝ yard	CS-10-Black	
Backing		5½ yards	1033-B	

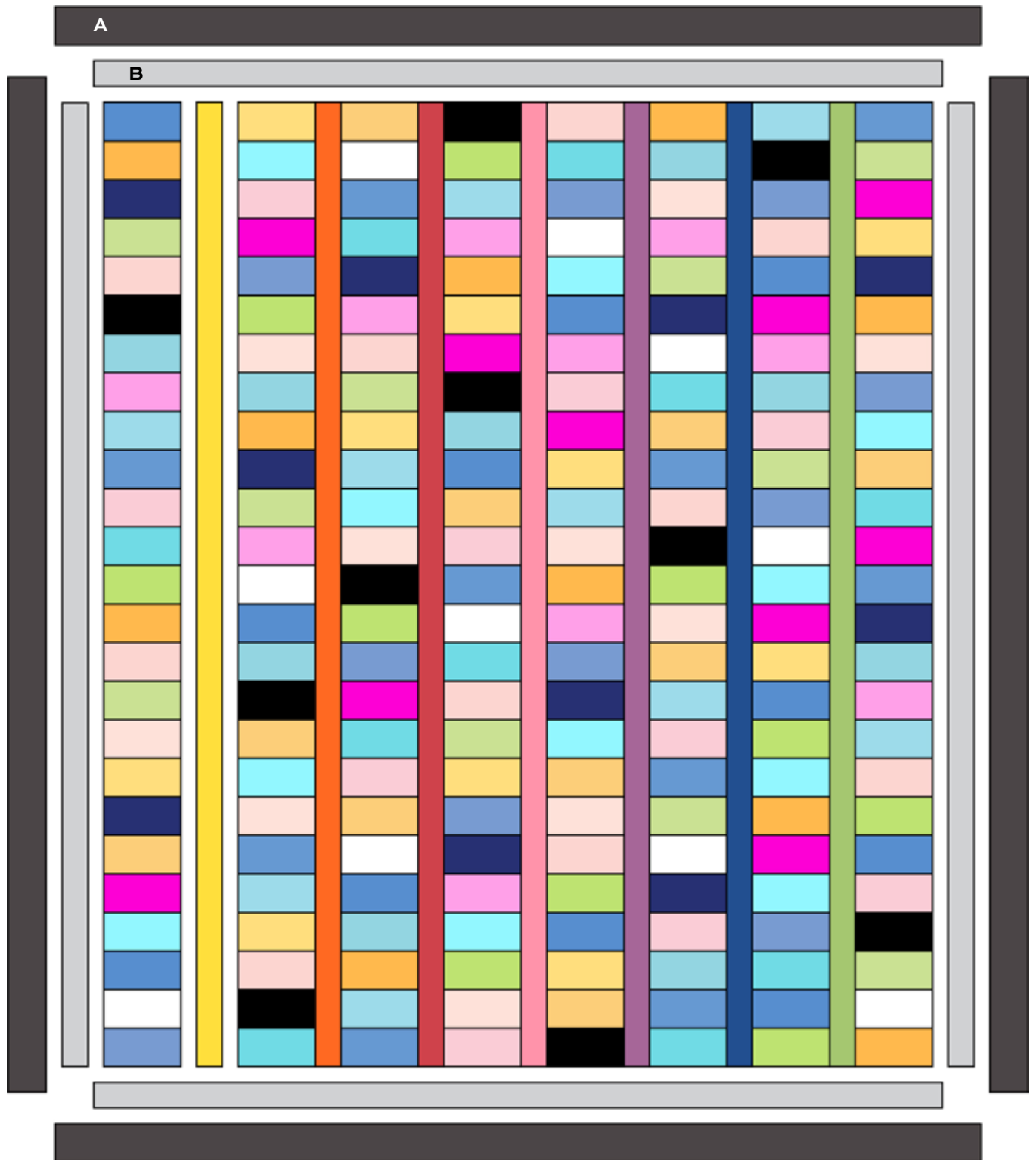
Making the Quilt

1. Piece together two strips for each of the solid fabric sashes and the outer borders. These are all longer than needed for the quilt to allow for some "fudging" if necessary. They will be trimmed later. Set aside.
2. Referring to the Quilt Assembly, arrange 25 bright rectangles in each of 8 vertical columns in the order shown, or as you desire. Disperse the black patches so none are too close together. No fabric should be next to itself. Stand back or look through a camera to see if the arrangement pleases you. Once you are satisfied, join the patches to make each column. Press seam allowances in one direction.
3. Sew the solid sashes between the columns, aligning the top of the sashes with the top of the columns. Press the seam allowances toward the sashes. Trim the bottom of the sashes even with the bottom of the columns.
4. Sew long Fabric B borders to the sides. Trim the borders even with the top and bottom of the column. Sew shorter Fabric B borders to the top and bottom of the quilt and trim even with the sides. Repeat these steps for Fabric A borders.

Finishing the Quilt

5. Layer the quilt with batting and backing and baste. Quilt in the ditch around borders, sashes, and patches, or quilt an overall pattern. Bind to finish the quilt.

Butterflies in Bloom Quilt



Quilt Assembly

Flutter

KIM SCHAEFER



1033-B



1033-L



1033-T



1034-K



1034-L



1034-Y



1035-B



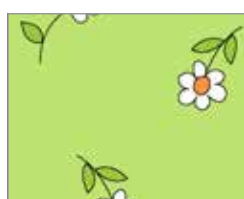
1035-E



1036-B



1036-E



1036-G



1036-K



1036-L



1036-T



1036-Y



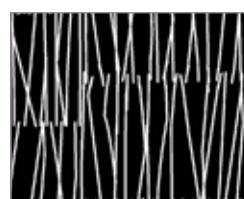
1037-B



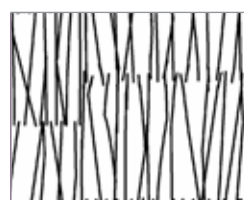
1037-E



1037-G



1037-K



1037-L



1037-O



1037-T



CS-10-Black



CS-10-Bubble



CS-10-Carrot



CS-10-Orchid



CS-10-Pear



CS-10-Red



CS-10-Sapphire



CS-10-Sunshine

All fabrics are used in quilt pattern. Fabrics shown are 50% of actual size.