

Home Town Quilt Seeds™ Quilt



Setting Instructions



82" x 82"



Home Town Quilt Seeds™ Quilt

Designed by Lori Holt of Bee in My Bonnet

FINISHED QUILT SIZE 82" × 82"

RST = Right Sides Together, SNF = Stitch and Flip, WOF = Width of Fabric, LOF = Length of Fabric

Please read through all the directions first before starting. Assume ¼" seam allowance. Yardage is based on a 42" width of fabric.

This guide requires a basic knowledge of quilting techniques and terminology. The quilt and block diagrams portrayed are virtual images. The layout and look of your project may differ when using actual fabric.

These instructions are intended to be used in conjunction with all nine of Lori Holt's Home Town Quilt Seeds™ Patterns, a pattern series featuring nine different quilt blocks. Each pattern is a great standalone quilt block, or combine all nine to create this quilt or another project of your choosing. Enjoy and share your quilt using the hashtags #hometownfabric, #quiltseeds, #beeinmybonnet, #rileyblakedesigns, and #iloverileyblake.

FABRIC REQUIREMENTS

Fabrics are from the Home Town fabric collection by Lori Holt of Bee in my Bonnet for Riley Blake Designs unless otherwise noted.

5" square of each:

Heirloom Coral Bills (C13582-HEIRCORAL)
Heirloom Cottage Newman (C13583-HEIRCOTTAGE)
Heirloom Sea Glass Bodell (C13594-HEIRSEAGLASS)
Tea Dye Bodell (C13594-TEADYE)
Brown Sugar Dansie (C13595-BROWNSUGAR)
Denim Dansie (C13595-DENIM)

10" square of each:

Dark Alpine Park (C13581-DKALPINE)
Tea Rose Park (C13581-TEAROSE)
Tea Rose Eastman (C13584-TEAROSE)
Leaf Eastman (C13584-LEAF)
Heirloom Coral Hardman (C13587-HEIRCORAL)
Denim Butterfield (C13588-DENIM)
Heirloom Coral Swasey (C13590-HEIRCORAL)
Leaf Swasey (C13590-LEAF)
Heirloom Cottage Mangum (C13592-HEIRCOTTAGE)
Heirloom Daisy Miller (C13593-HEIRDAISY)
Frosting Bodell (C13594-FROSTING)
Schoolhouse Red Dansie (C13595-SCHRED)
Heirloom Daisy Crane (C13596-HEIRDAISY)
Denim Freeman (C13597-DENIM)
Teal Freeman (C13597-TEAL)
Bee Basics Pewter Heart (C6401-PEWTER)
Bee Basics Pebble Tiny Daisy (C6403-PEBBLE)
Bee Plaids Pebble Cider (C12031-PEBBLE)

Fat Eighth of each:

Brown Sugar Newman (C13583-BROWNSUGAR)
Lettuce Sorenson (C13586-LETTUCE)
Schoolhouse Red Miller (C13593-SCHRED)

Fat Quarter of each:

Lettuce Hardman (C13587-LETTUCE)
Light Basil Mangum (C13592-LTBASIL)

ADDITIONAL FABRICS

⅓ Yard Tea Rose Lewis (C13585-TEAROSE)
⅔ Yard Basil Miller (C13593-BASIL)
⅔ Yard Lettuce Butterfield (C13598-LETTUCE)
¾ Yard Heirloom Daisy Butterfield (C13588-HEIRDAISY)
*includes binding
1 Yard Tea Dye Butterfield (C13598-TEADYE)
1 Yard Coral Patterns (C13599-CORAL)
2 ½ Yards Heirloom Daisy Hamilton (C13591-HEIRDAISY)

Suggested Backing:

2 ½ Yards Heirloom Coral Wide Back (WB13601-HEIRCORAL)

NOTIONS/SUPPLIES

Batting (90" × 90")
Seams Sew Easy™ Seam Guide Sea Glass (ST-25443)
Lori Holt Cute Cuts™ Trim-it™ Ruler 16 ½" × 16 ½" (ST-4819)
Lori Holt Cute Cuts™ Trim-it™ Ruler 3 ½" × 3 ½" (STTI-5525)

Home Town Quilt Seeds™ Quilt

CUTTING REQUIREMENTS

Label fabrics as you cut using the letter labels provided.



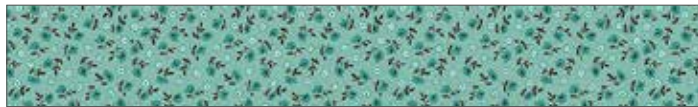
Heirloom Coral Bills (C13582-HEIRCORAL)

- Cut (4) 1 1/2" x 1 1/2" squares. Label as A.



Heirloom Cottage Newman (C13583-HEIRCOTTAGE)

- Cut (8) 1 1/4" x 1 1/4" squares. Label as B.



Heirloom Sea Glass Bodell (C13594-HEIRSEAGLASS)

- Cut (8) 1 1/4" x 1 1/4" squares. Label as B.



Tea Dye Bodell (C13594-TEADYE)

- Cut (12) 1" x 1 1/4" rectangles. Label as C.



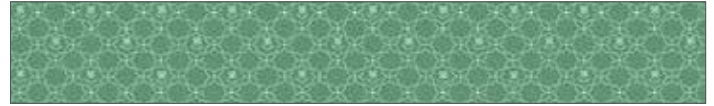
Brown Sugar Dansie (C13595-BROWNSUGAR)

- Cut (12) 1" x 1 1/4" rectangles. Label as D.



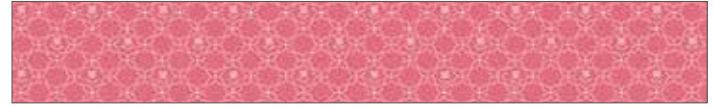
Denim Dansie (C13595-DENIM)

- Cut (8) 1 1/4" x 1 1/4" squares. Label as B.



Dark Alpine Park (C13581-DKALPINE)

- Cut (20) 1 1/4" x 1 1/4" squares. Label as B.



Tea Rose Park (C13581-TEAROSE)

- Cut (4) 1 1/2" x 1 1/2" squares. Label as A.
- Cut (12) 1 1/4" x 1 1/4" squares. Label as B.



Tea Rose Eastman (C13584-TEAROSE)

- Cut (4) 1 1/2" x 1 1/2" squares. Label as A.
- Cut (4) 1 1/4" x 1 1/4" squares. Label as B.



Leaf Eastman (C13584-LEAF)

- Cut (12) 1 1/2" x 1 1/2" squares. Label as A.



Heirloom Coral Hardman (C13587-HEIRCORAL)

- Cut (20) 1 1/4" x 1 1/4" squares. Label as B.



Denim Butterfield (C13588-DENIM)

- Cut (12) 1 1/2" x 1 1/2" squares. Label as A.



Heirloom Coral Swasey (C13590-HEIRCORAL)

- Cut (12) 1 1/2" x 1 1/2" squares. Label as A.

Home Town Quilt Seeds™ Quilt Seeds™



Leaf Swasey (C13590-LEAF)

- Cut (8) 1 1/2" x 1 1/2" squares. Label as A.



Heirloom Cottage Mangum (C13592-HEIRCOTTAGE)

- Cut (16) 1 1/2" x 1 1/2" squares. Label as A.



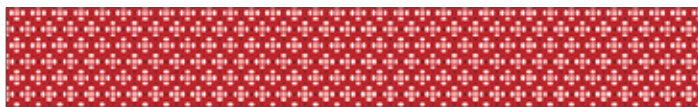
Heirloom Daisy Miller (C13593-HEIRDAISY)

- Cut (12) 1 1/2" x 1 1/2" squares. Label as A.
- Cut (8) 1 1/4" x 1 1/4" squares. Label as B.



Frosting Bodell (C13594-FROSTING)

- Cut (8) 1 1/2" x 1 1/2" squares. Label as A.
- Cut (8) 1 1/4" x 1 1/4" squares. Label as B.



Schoolhouse Red Dansie (C13595-SCHRED)

- Cut (12) 1 1/2" x 1 1/2" squares. Label as A.
- Cut (12) 1 1/4" x 1 1/4" squares. Label as B.



Heirloom Daisy Crane (C13596-HEIRDAISY)

- Cut (4) 1 1/2" x 1 1/2" squares. Label as A.
- Cut (12) 1 1/4" x 1 1/4" squares. Label as B.



Denim Freeman (C13597-DENIM)

- Cut (4) 1 1/2" x 1 1/2" squares. Label as A.
- Cut (16) 1 1/4" x 1 1/4" squares. Label as B.



Teal Freeman (C13597-TEAL)

- Cut (8) 1 1/2" x 1 1/2" squares. Label as A.



Bee Basics Pewter Heart (C6401-PEWTER)

- Cut (6) 2 1/4" x 3 1/2" rectangles. Label as E.
- Cut (6) 1 1/4" x 3 1/2" rectangles. Label as F.



Bee Basics Pebble Tiny Daisy (C6403-PEBBLE)

- Cut (6) 2 1/4" x 3 1/2" rectangles. Label as G.
- Cut (6) 1 1/4" x 3 1/2" rectangles. Label as H.



Bee Plaids Pebble Cider (C12031-PEBBLE)

- Cut (12) 1" x 3 1/2" rectangles. Label as I.
- Cut (12) 1" x 2" rectangles. Label as J.



Brown Sugar Newman (C13583-BROWNSUGAR)

- Cut (40) 1 1/2" x 1 1/2" squares. Label as K.



Lettuce Sorenson (C13586-LETTUCE)

- Cut (3) 3 1/2" x 4 1/2" rectangles. Label as L.
- Cut (3) 3 1/2" x 3 1/2" squares. Label as M.



Schoolhouse Red Miller (C13593-SCHRED)

- Cut (20) 1 1/2" x 1 1/2" squares. Label as A.
- Cut (12) 1 1/4" x 1 1/4" squares. Label as B.

Home Town Quilt Seeds™ Quilt Seeds™



Lettuce Hardman (C13587-LETTUCE)

- Cut (3) 3 1/2" x 4 1/2" rectangles. Label as L.
- Cut (3) 3 1/2" x 3 1/2" squares. Label as M.
- Cut (36) 1 3/4" x 2 1/4" rectangles. Label as N.



Light Basil Mangum (C13592-LTBASIL)

- Cut (3) 3 1/2" x 4 1/2" rectangles. Label as L.
- Cut (3) 3 1/2" x 3 1/2" squares. Label as M.
- Cut (36) 1 3/4" x 2 1/4" rectangles. Label as O.



Tea Rose Lewis (C13585-TEAROSE)

- Cut (7) 1 1/2" x WOF strips. Sew together, then subcut:
 - (2) 1 1/2" x 70 1/2" strips for top/bottom inner borders.
 - (2) 1 1/2" x 68 1/2" strips for side inner borders.
 - (4) 1 1/2" x 1 1/2" squares. Label as A.



Basil Miller (C13593-BASIL)

- Cut (1) 3 1/2" x WOF strip; subcut:
 - (3) 3 1/2" x 4 1/2" rectangles. Label as L.
 - (3) 3 1/2" x 3 1/2" squares. Label as M.
- Cut (2) 2 1/2" x WOF strips; subcut:
 - (12) 2 1/2" x 5 1/2" rectangles. Label as P.
- Cut (4) 1" x WOF strips; subcut:
 - (36) 1" x 4 1/2" rectangles. Label as Q.



Lettuce Butterfield (C13598-LETTUCE)

- Cut (14) 1 1/2" x WOF strips. Sew together, then subcut:
 - (8) 1 1/2" x 66 1/2" strips. Label as R.
 - (8) 1 1/2" x 5 1/2" rectangles. Label as S.



Heirloom Daisy Butterfield (C13588-HEIRDAISY)

- Cut (9) 2 1/2" x WOF binding strips.
- Cut (1) 1 1/2" x WOF strip; subcut:
 - (16) 1 1/2" x 1 1/2" squares. Label as A.
 - (12) 1 1/4" x 1 1/4" squares. Label as B.



Tea Dye Butterfield (C13598-TEADYE)

- Cut (2) 2 1/2" x WOF strips; subcut:
 - (12) 2 1/2" x 5 1/2" rectangles. Label as T.
- Cut (8) 1 1/2" x WOF strips; subcut:
 - (24) 1 1/2" x 12 1/2" rectangles. Label as U.
- Cut (7) 1 1/4" x WOF strips; subcut:
 - (48) 1 1/4" x 1 3/4" rectangles. Label as V.
 - (144) 1 1/4" x 1 1/4" squares. Label as W.
- Cut (1) 1" x WOF strip; subcut:
 - (24) 1" x 1 1/4" rectangles. Label as X.



Coral Patterns (C13599-CORAL)

- Cut (4) 1 3/4" x WOF strips; subcut:
 - (72) 1 3/4" x 2" rectangles. Label as Y.
- Cut (6) 1 1/2" x WOF strips; subcut:
 - (160) 1 1/2" x 1 1/2" squares. Label as Z.
- Cut (8) 1 1/4" x WOF strips; subcut:
 - (72) 1 1/4" x 1 3/4" rectangles. Label as AA.
 - (144) 1 1/4" x 1 1/4" squares. Label as BB.



Heirloom Daisy Hamilton (C13591-HEIRDAISY)

- Cut (4) 6 1/2" x LOF strips; subcut:
 - (2) 6 1/2" x 70 1/2" strips for side outer borders.
 - (2) 6 1/2" x 82 1/2" strips for top/bottom outer borders.

Home Town Quilt Seeds™ Quilt Seeds™

QUILT ASSEMBLY

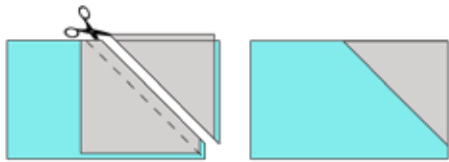
Use the cover image, corresponding diagrams, cutting list, and Quilt Layout Diagram on page 9 for reference.

Sew with right sides together unless otherwise stated. Press all seams open unless otherwise stated. Dimensions listed in steps are unfinished sizes unless otherwise stated.

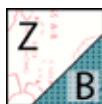
SEWING TECHNIQUES

All angled pieces are constructed using the stitch and flip method. This method is described below and referenced throughout the pattern.

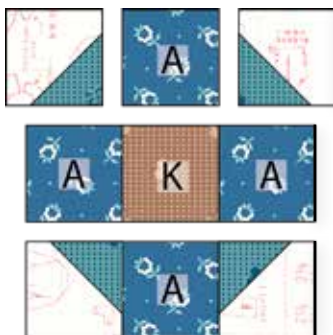
Place the (2) pieces RST matching the raw edges in one corner. Draw a diagonal line on the wrong side of the top piece across the corner. Sew on the drawn line. Trim the seam allowance from the corner beyond the sewn line to a $\frac{1}{4}$ ". Flip the top piece away from the bottom piece and press.



- Using the SNF method, attach (1) B square to the bottom right corner of (1) Z square. Repeat to make (4) matching Corner Units that should measure $1\frac{1}{2}'' \times 1\frac{1}{2}''$.

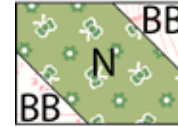


- Arrange (4) Corner Units, (4) matching A squares, and (1) K square as shown. Sew the units and squares together. The Flower Unit should measure $3\frac{1}{2}'' \times 3\frac{1}{2}''$.

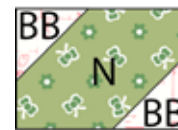


- Repeat Steps 1 and 2 to make a total of (40) Flower Units.

- Using the SNF method, attach (2) BB squares to the bottom left and top right corners of (1) N rectangle. Repeat to make (18) Lettuce Hardman Top Leaf Units that should measure $2\frac{1}{4}'' \times 1\frac{3}{4}''$.



- Using the SNF method, attach (2) BB squares to the top left and bottom right corners of (1) N rectangle. Repeat to make (18) Lettuce Hardman Bottom Leaf Units that should measure $2\frac{1}{4}'' \times 1\frac{3}{4}''$.



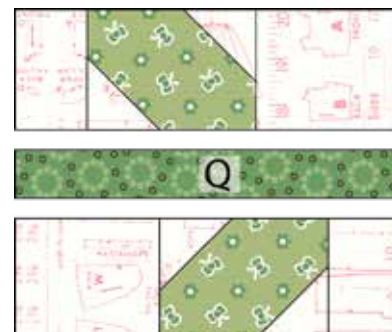
- Sew (1) AA rectangle, (1) Lettuce Hardman Top Leaf Unit, and (1) Y rectangle together as shown. Repeat to make (18) Lettuce Hardman Top Leaf Units that should now measure $4\frac{1}{2}'' \times 1\frac{3}{4}''$.



- Sew (1) Y rectangle, (1) Lettuce Hardman Bottom Leaf Unit, and (1) AA rectangle together as shown. Repeat to make (18) Lettuce Hardman Bottom Leaf Units that should now measure $4\frac{1}{2}'' \times 1\frac{3}{4}''$.

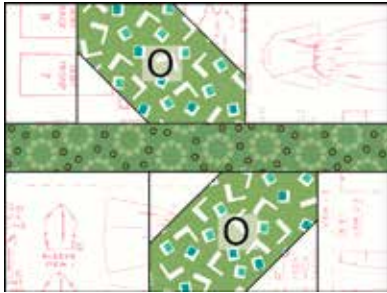


- Arrange (1) Lettuce Hardman Top Leaf Unit, (1) Q rectangle, and (1) Lettuce Hardman Bottom Leaf Unit as shown. Sew the units and rectangle together. Repeat to make (18) Lettuce Hardman Leaf and Vine Units that should measure $4\frac{1}{2}'' \times 3\frac{1}{2}''$.

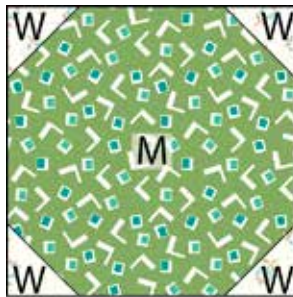


Home Town Quilt Seeds™ Quilt

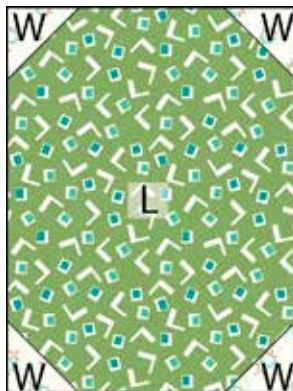
9. Repeat Steps 4-8 using O rectangles in place of the N rectangles to make a total of (18) Light Basil Mangum Leaf and Vine Units.



10. Using the SNF method, attach (4) W squares to the corners of (1) M square. Repeat to make (12) Topiary Top Units that should measure $3\frac{1}{2}'' \times 3\frac{1}{2}''$.



11. Using the SNF method, attach (4) W squares to the corners of (1) L rectangle. Repeat to make (12) Topiary Bottom Units that should measure $3\frac{1}{2}'' \times 4\frac{1}{2}''$.



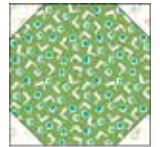
12. Sew (2) V rectangles and (1) C rectangle together as shown. Repeat to make (12) Tea Dye Bodell Topiary Trunk Units that should measure $3\frac{1}{2}'' \times 1\frac{1}{4}''$.



13. Sew (2) V rectangles and (1) D rectangle together as shown. Repeat to make (12) Brown Sugar Dansie Topiary Trunk Units that should measure $3\frac{1}{2}'' \times 1\frac{1}{4}''$.



14. Arrange (1) Topiary Top Unit, (2) Tea Dye Bodell Topiary Trunk Units, and (1) matching Topiary Bottom Unit as shown. Sew the units together. Repeat to make (6) Tea Dye Bodell Topiary Units that should measure $3\frac{1}{2}'' \times 9''$.

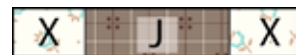


15. Repeat Step 14 using remaining matching Topiary Top and Topiary Bottom Units and Brown Sugar Dansie Topiary Trunk Units to make (6) Brown Sugar Dansie Topiary Units.

16. Using the SNF method, attach (2) W squares to the bottom corners of (1) G rectangle. Repeat to make (6) Pebble Tiny Daisy Pot Top Units that should measure $3\frac{1}{2}'' \times 2\frac{1}{4}''$.



17. Sew (2) X rectangles and (1) J rectangle together as shown. Repeat to make (12) Pot Middle Units that should measure $3\frac{1}{2}'' \times 1''$.



18. Using the SNF method, attach (2) W squares to the top corners of (1) H rectangle. Repeat to make (6) Pebble Tiny Daisy Pot Bottom Units that should measure $3\frac{1}{2}'' \times 1\frac{1}{4}''$.

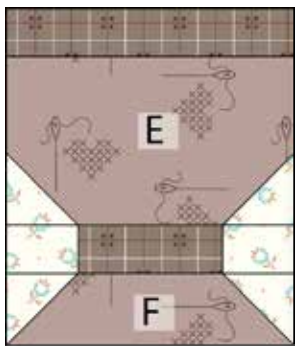


Home Town Quilt Seeds™ Quilt

19. Arrange (1) I rectangle, (1) Pebble Tiny Daisy Pot Top Unit, (1) Pot Middle Unit, and (1) Pebble Tiny Daisy Pot Bottom Unit as shown. Sew the rectangle and units together. Repeat to make (6) Pebble Tiny Daisy Pot Units that should measure $3\frac{1}{2}'' \times 4''$.



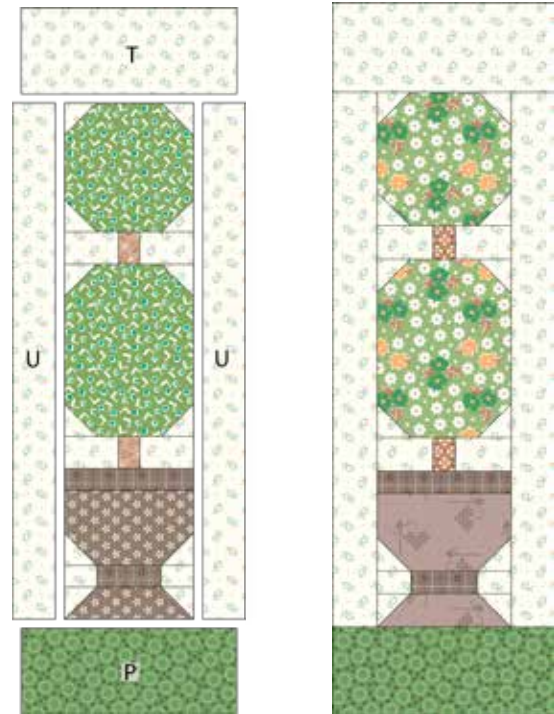
20. Repeat Steps 16, 18, and 19 using E rectangles in place of the G rectangles and F rectangles in place of the H rectangles to make a total of (6) Pewter Heart Pot Units.



21. Arrange (1) Tea Dye Bodell Topiary Unit and (1) Pebble Tiny Daisy Pot Unit as shown. Sew the units together. Repeat to make (6) Pebble Tiny Daisy Potted Topiary Units that should measure $3\frac{1}{2}'' \times 12\frac{1}{2}''$.



22. Sew (2) U rectangles to the side edges of (1) Pebble Tiny Daisy Potted Topiary Unit as shown. Sew (1) T rectangle to the top and (1) P rectangle to the bottom. Repeat to make (6) Pebble Tiny Daisy Potted Topiary and Grass Units that should measure $5\frac{1}{2}'' \times 16\frac{1}{2}''$.
23. Repeat Steps 21 and 22 using the Brown Sugar Dansie Topiary Units and Pewter Heart Pot Units to make a total of (6) Pewter Heart Potted Topiary and Grass Units.



Home Town Quilt Seeds™ Quilt Seeds™

24. Arrange (10) Flower Units, (5) Lettuce Hardman Leaf and Vine Units, and (4) Light Basil Mangum Leaf and Vine Units as shown. Sew the units together. Repeat to make a total of (2) Flower and Leaf A Rows that should measure $66\frac{1}{2}'' \times 3\frac{1}{2}''$.

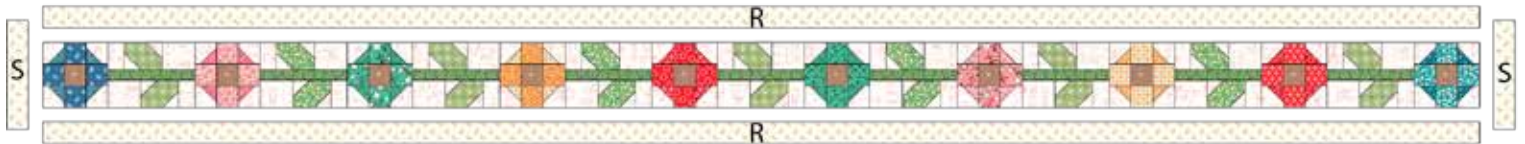


25. Arrange (10) Flower Units, (5) Light Basil Mangum Leaf and Vine Units, and (4) Lettuce Hardman Leaf and Vine Units as shown. Sew the units together. Repeat to make a total of (2) Flower and Leaf B Rows that should measure $66\frac{1}{2}'' \times 3\frac{1}{2}''$.






26. Sew (2) R rectangles to the top and bottom of (1) Flower and Leaf A Row as shown. Sew (2) S rectangles to the sides. Repeat to make a total of (2) Flower and Leaf A Rows that should now measure $68\frac{1}{2}'' \times 5\frac{1}{2}''$.

27. Repeat Step 26 using Flower and Leaf B Rows and remaining R strips and S rectangles.



Stay up-to-date on all Lori Holt happenings and projects:

-  Visit Lori's Blog at BeInMyBonnetCo.blogspot.com
-  Subscribe to the Lori Holt YouTube channel
-  Follow her on Instagram at @beelori1

#hometownfabric, #quiltseeds, #beinmybonnet, #rileyblakedesigns, #iloverileyblake

Home Town Quilt Seeds™ Quilt

28. Arrange (2) Flower and Leaf A Rows, (6) Pebble Tiny Daisy Potted Topiary and Grass Units, (9) Quilt Seeds™ blocks, (6) Pewter Heart Potted Topiary and Grass Units and (2) Flower and Leaf B Rows as shown. Sew the units and blocks together in rows. Sew the rows together to form the Quilt Center. The Quilt Center should measure 68 ½" × 68 ½".

Quilt Layout Diagram



Home Town Quilt Seeds™ Quilt

29. Sew the (2) $1\frac{1}{2} \times 68\frac{1}{2}$ " Side Inner Borders to the sides of the Quilt Center. Sew the (2) $70\frac{1}{2} \times 1\frac{1}{2}$ " Top/Bottom Inner Borders to the top and bottom. The quilt should measure $70\frac{1}{2} \times 70\frac{1}{2}$ ".
30. Sew the (2) Side Outer Borders to the sides of the Quilt Center. Sew the Top/Bottom Outer Borders to the Quilt Center to complete the quilt top. The quilt top should measure $82\frac{1}{2} \times 82\frac{1}{2}$ ".



Finishing

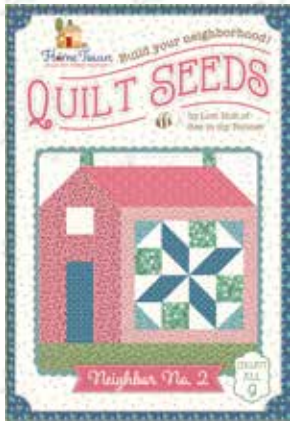
Finish the quilt by layering the quilt top, batting, and backing. Baste quilt layers together and quilt as desired. Finish with the $2\frac{1}{2}$ " Heirloom Daisy Butterfield binding strips.

Home Town Quilt Seeds™ by Lori Holt of Bee in my Bonnet

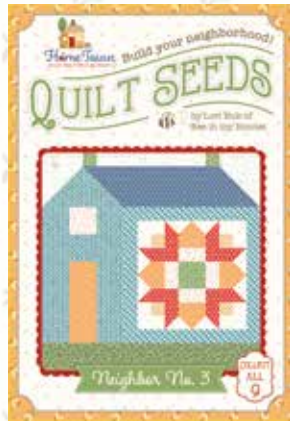
Neighbor No. 1



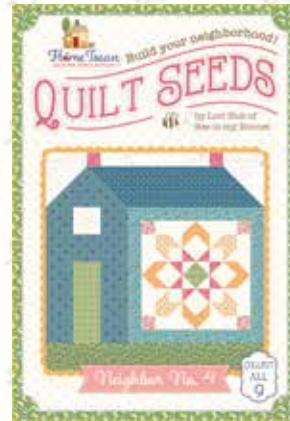
Neighbor No. 2



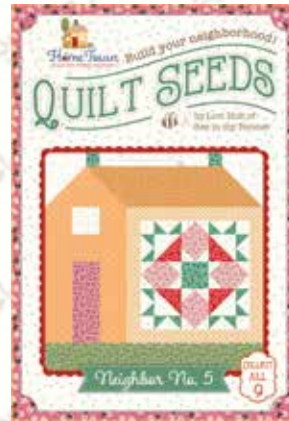
Neighbor No. 3



Neighbor No. 4



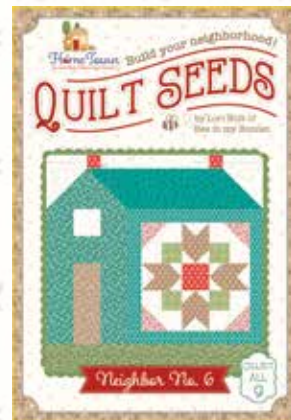
Neighbor No. 5



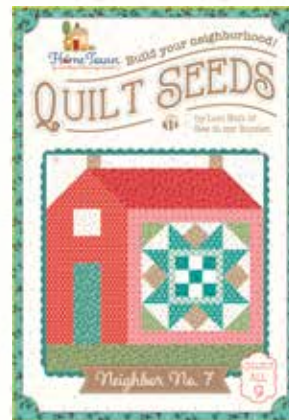
Home Town Quilt Seeds™ Quilt



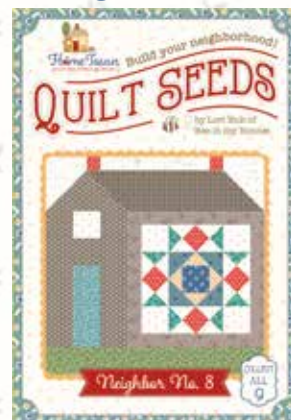
Neighbor No. 6



Neighbor No. 7



Neighbor No. 8



Neighbor No. 9

