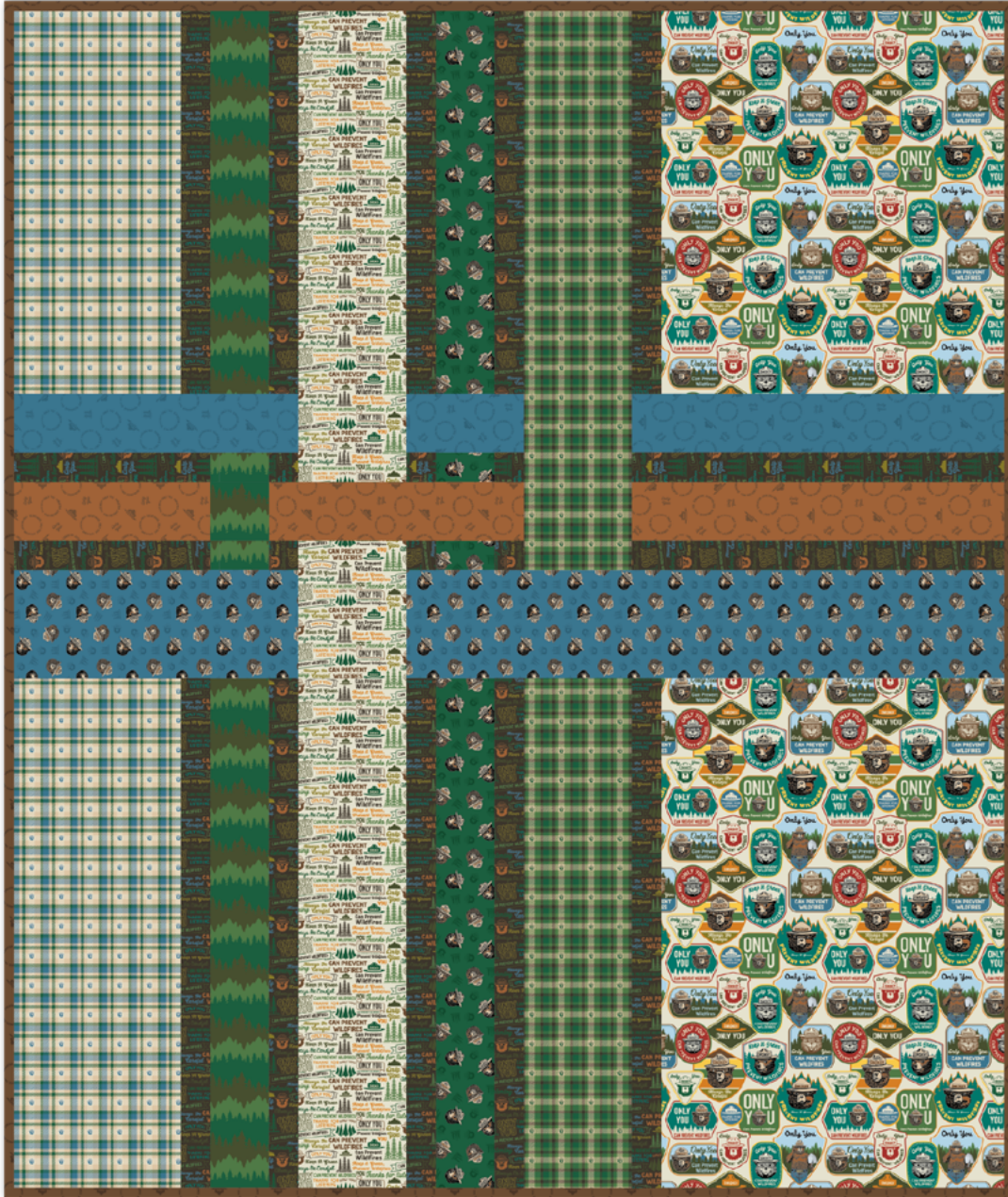


SMOKEY BEAR PLAID

Riley Blake
DESIGNS™



51" x 60 1/2"



04/01/2024

SMOKEY BEAR PLAID

FINISHED QUILT SIZE 51" × 60 ½"

Please read all instructions before beginning this project.
Yardage calculated using a 42" usable width of fabric.

GENERAL INSTRUCTIONS

Please check www.rileyblakedesigns.com/pattern-updates for any revisions before starting this project. This pattern requires a basic knowledge of quilting techniques and terminology. The quilt and block diagrams portrayed are virtual images. The layout and look of your project may differ when using actual fabric. It is not recommended to prewash fabric before cutting and assembling.

WOF = Width of Fabric

RST = Right Sides Together

FABRIC REQUIREMENTS

All fabrics are from the Only You collection unless stated otherwise.

- ¼ yard C14644-CADET Text Toss
- ¼ yard C14641-FOREST Smokey Toss
- ¼ yard C14644-ORANGE Text Toss
- ⅜ yard C14641-CADET Smokey Toss
- ⅞ yard C14642-FOREST Tree Stripe
- ⅞ yard C14643-CREAM Catchphrase
- ⅞ yard C14645-FOREST Plaid
- ⅞ yard C14643-BARK Catchphrase
- ⅞ yard C14645-CADET Plaid
- ⅞ yard C14640-CREAM Main
- ½ yard C14644-BROWN Text Toss (binding)

OTHER SUPPLIES

- Basic Sewing Supplies
- 1 ⅝ yards Wide Back backing fabric of your choice
(suggested WB605-CHOCOLATE Shades)
- Batting

CUTTING INSTRUCTIONS

When cutting fabrics, use a straight edge ruler and rotary cutter. Measurements include ¼" seam allowance. Label, allocate, and organize all cuts as noted.

Please note:

Given the directional print of several of these fabrics, it is important to make all cuts in the order given, paying close attention to the orientation of the pieces and fabrics before you cut. Please see the quilt layout diagram for placement of each cut to ensure the text is in the correct direction.



Cadet Text Toss

Cut (1) 3 ½" × WOF strip; subcut:

- (1) 3 ½" × 6 ½" rectangle. Label as A.
- (1) 3 ½" × 15" rectangle. Label as B.
- (1) 3 ½" × 19 ½" rectangle. Label as C.



Forest Smokey Toss

Cut (2) 3 ½" × WOF strips; subcut:

- (2) 3 ½" × 2" rectangles. Label as D.
- (1) 3 ½" × 20" rectangle. Label as E.
- (1) 3 ½" × 26 ½" rectangle. Label as F.



Orange Text Toss

Cut (2) 3 ½" × WOF strips; subcut:

- (1) 3 ½" × 10 ½" rectangle. Label as G.
- (1) 3 ½" × 13 ½" rectangle. Label as H.
- (1) 3 ½" × 19 ½" rectangle. Label as I.



Cadet Smokey Toss

Cut (2) 6" × WOF strips; subcut:

- (1) 6" × 15" rectangle. Label as J.
- (1) 6" × 31" rectangle. Label as K.

SMOKEY BEAR PLAID



Forest Tree Stripe

- Cut (1) 26 1/2" x WOF strip; subcut:
- (2) 3 1/2" x 2" rectangles. Label as L.
 - (1) 3 1/2" x 3 1/2" square. Label as M.
 - (1) 3 1/2" x 20" rectangle. Label as N.
 - (1) 3 1/2" x 26 1/2" rectangle. Label as O.



Cream Catchphrase

- Cut (1) 26 1/2" x WOF strip; subcut:
- (2) 6" x 2" rectangles. Label as P.
 - (1) 6" x 3 1/2" rectangle. Label as Q.
 - (1) 6" x 6" square. Label as R.
 - (1) 6" x 20" rectangle. Label as S.
 - (1) 6" x 26 1/2" rectangle. Label as T.



Forest Plaid

- Cut (1) 26 1/2" x WOF strip; subcut:
- (2) 6" x 2" rectangles. Label as U.
 - (2) 6" x 3 1/2" rectangles. Label as V.
 - (1) 6" x 20" rectangle. Label as W.
 - (1) 6" x 26 1/2" rectangle. Label as X.



Bark Catchphrase

- Cut (1) 26 1/2" x WOF strip; subcut:
- (6) 2" x 2" squares. Label as Y.
 - (2) 2" x 10 1/2" rectangles. Label as Z.
 - (2) 2" x 19 1/2" rectangles. Label as AA.
 - (5) 2" x 20" rectangles. Label as AB.
 - (5) 2" x 26 1/2" rectangles. Label as AC.



Cadet Plaid

- Cut (1) 26 1/2" x WOF strip; subcut:
- (1) 9" x 20" rectangle. Label as AD.
 - (1) 9" x 26 1/2" rectangle. Label as AE.



Cream Main

- Cut (1) 26 1/2" x WOF strip; subcut:
- (1) 18" x 20" rectangle. Label as AF.
 - (1) 18" x 26 1/2" rectangle. Label as AG.



Brown Text Toss

- Cut (6) 2 1/2" x WOF strips. Set aside for binding.

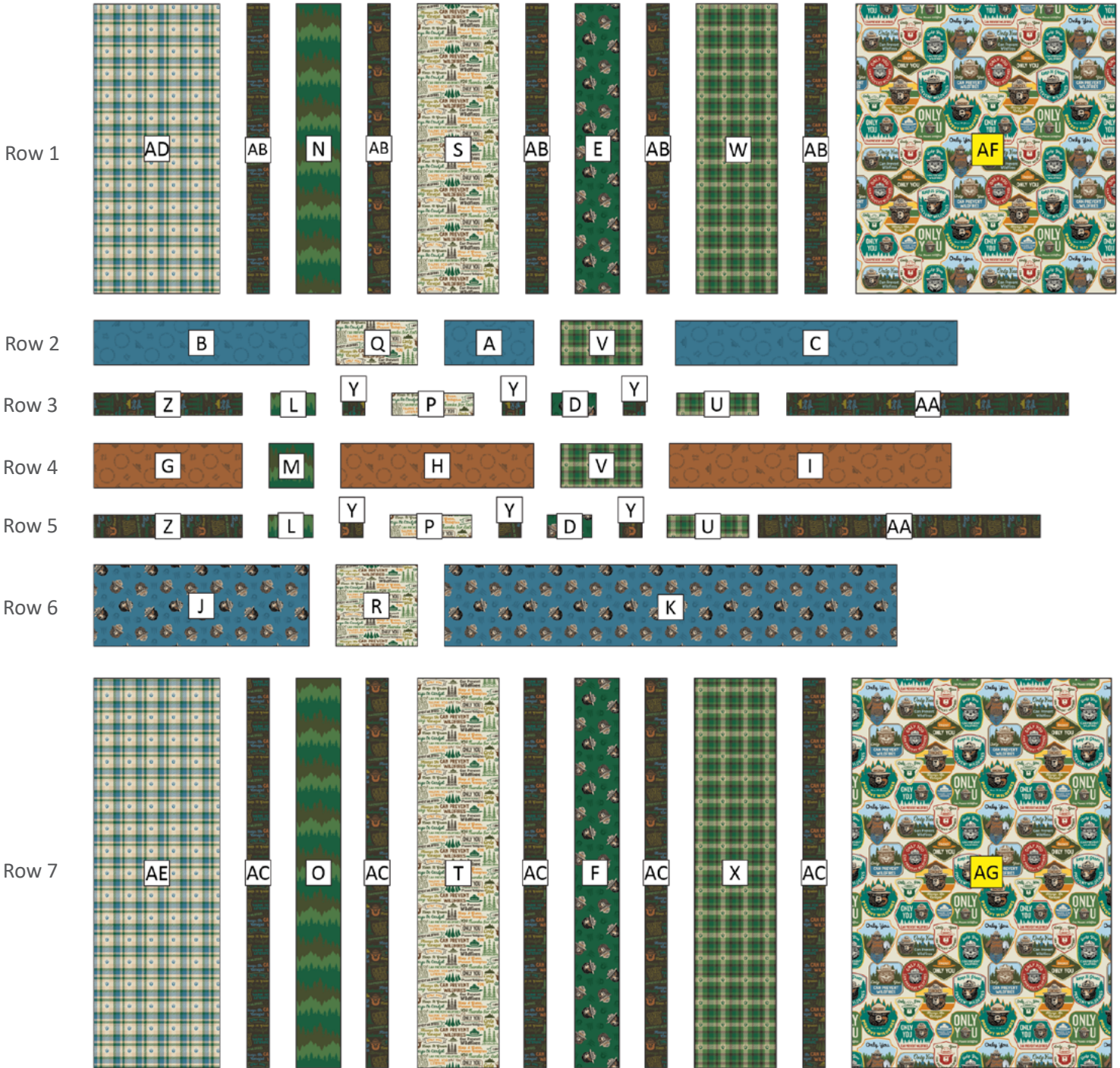
SEWING TECHNIQUES

All seams should be sewn with a 1/4" seam allowance unless stated otherwise. Sew all seams with RST unless stated otherwise. Refer to the quilt layout diagram for placement of the prints. Press seams as desired unless stated otherwise. Dimensions listed in steps are unfinished sizes unless stated otherwise.

SMOKEY BEAR PLAID

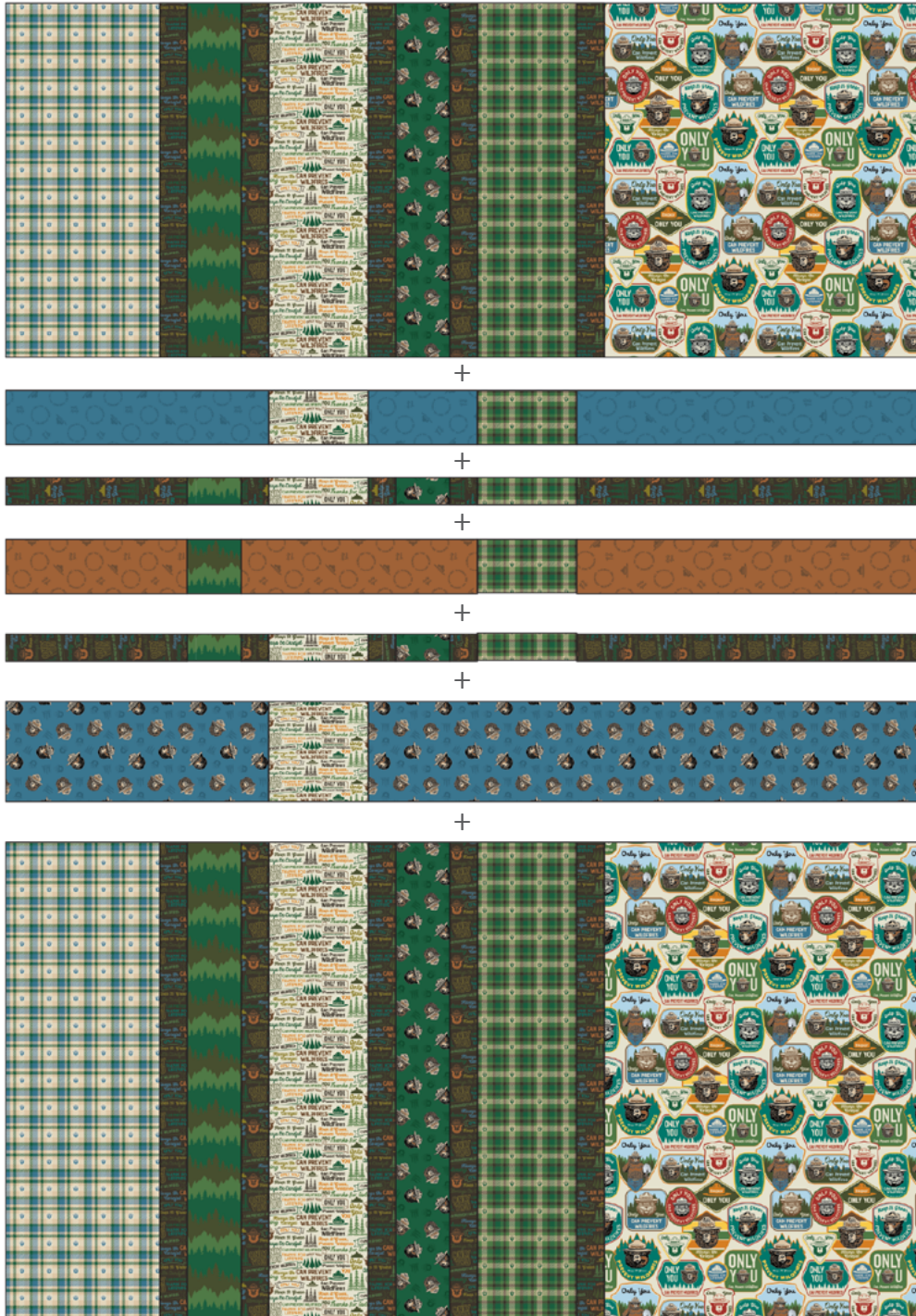
QUILT ASSEMBLY

1. Gather all of the labeled pieces, and lay them out using the diagram below.
2. Sew pieces RST into rows.



SMOKEY BEAR PLAID

3. Sew rows RST to create the Quilt Top which should measure 51" x 60 1/2".



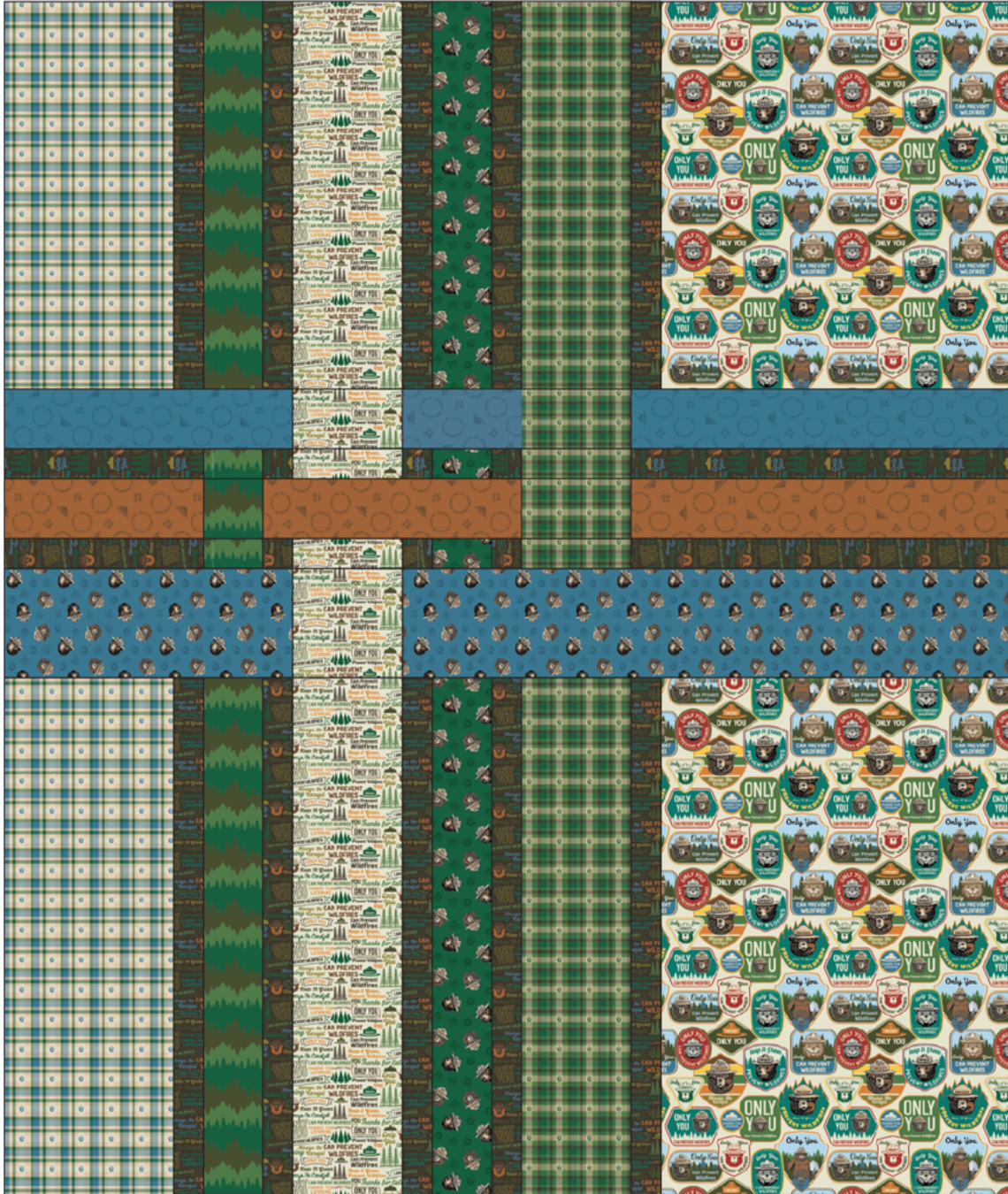
FINISHING INSTRUCTIONS

4. Finish your quilt by layering the quilt top, batting, and backing. Baste quilt layers together and quilt as desired. Sew the Brown Text Toss binding strips together end-to-end. Then bind the trimmed, finished quilt using your favorite binding method.

Enjoy and share your quilt using the hashtags: [#onlyyoubfabric](#), [#smokeybearplaidquilt](#), [#rileyblakedesigns](#), and [#loverileyblake](#).

SMOKEY BEAR PLAID

QUILT LAYOUT DIAGRAM



50 1/2" x 60 1/2"