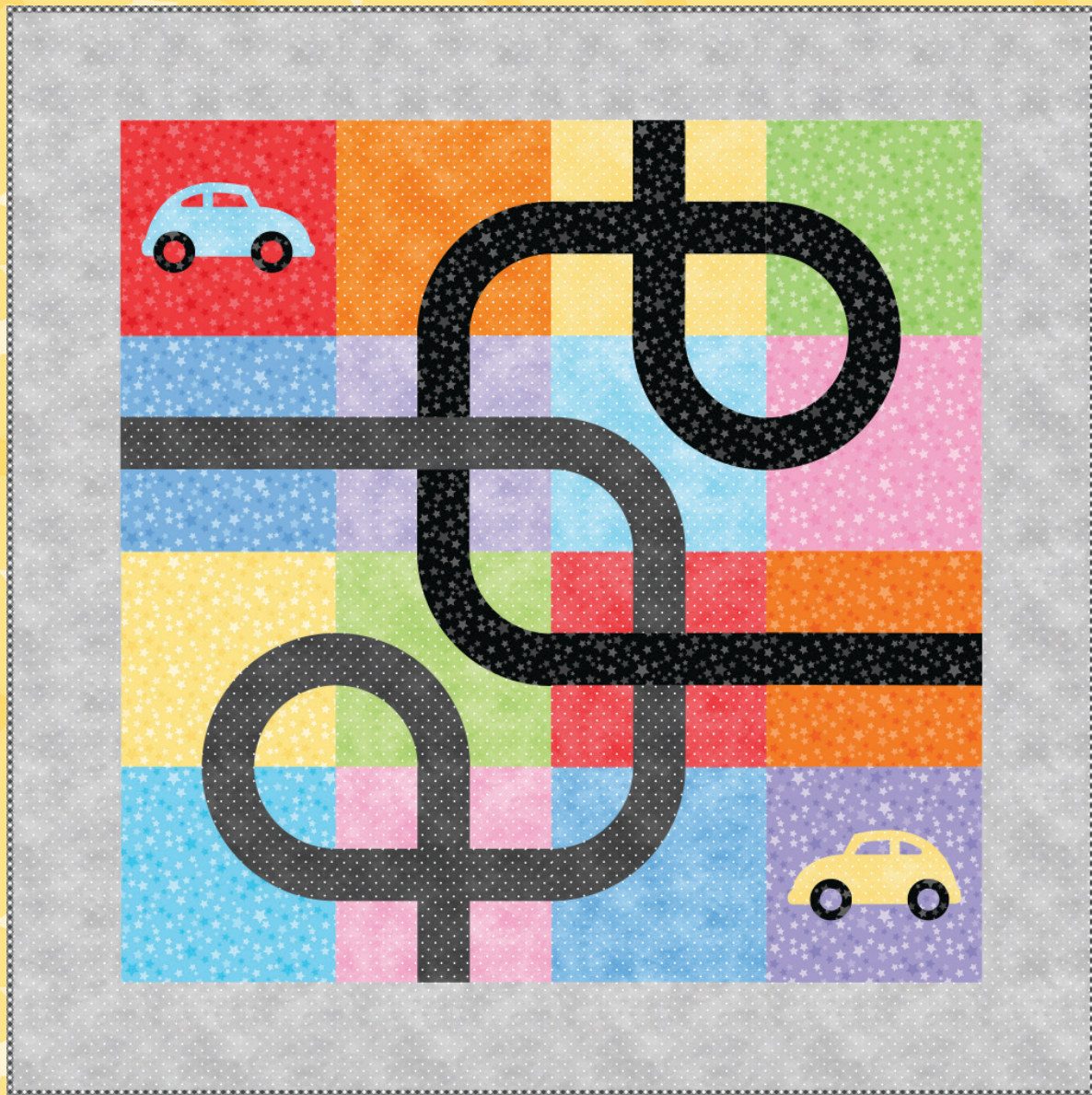


MAYWOOD  STUDIO

# playtime quilt



## Playtime Quilt by Maywood Studio

Featuring the Playtime Flannel collection from Maywood Studio.

40" x 40"

Skill Level: Intermediate

# playtime

● ■ ▲ FLANNEL ▲ ■ ●



Fabric 1  
F10692-R



Fabric 2  
F10692-O



Fabric 3  
F10692-P



Fabric 4  
F10692-Q



Fabric 5  
F10692-S



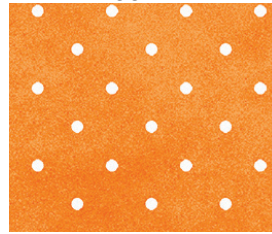
Fabric 6  
F10692-B



Fabric 7  
F10692-G



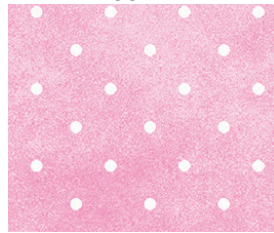
Fabric 8  
F10692-V



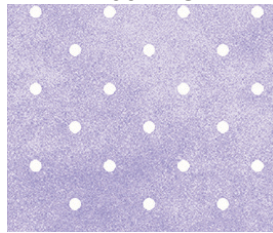
Fabric 9  
F10690-O



Fabric 10  
F10690-S



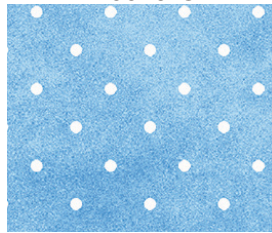
Fabric 11  
F10690-P



Fabric 12  
F10690-V



Fabric 13  
F10690-Q



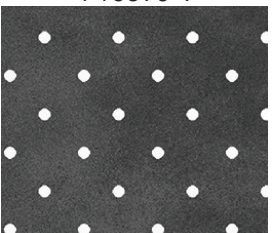
Fabric 14  
F10690-B



Fabric 15  
F10690-G



Fabric 16  
F10690-R



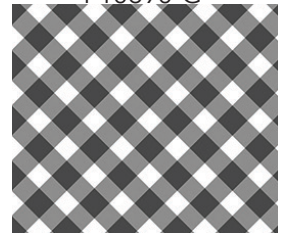
Fabric 17  
F10690-J



Fabric 18  
F10692-J



Fabric 19-Borders  
F10690-K



Fabric 20-Binding  
F10691-J

WOF - Width of Fabric  
LOF - Length of Fabric  
RST - Right Sides Together  
HST - Half Square Triangle

Fabric Requirements		
Fabric 1	<b>F10692-R</b>	10 x 10 sq
Fabric 2	<b>F10692-O</b>	10 x 10 sq
Fabric 3	<b>F10692-P</b>	10 x 10 sq
Fabric 4	<b>F10692-Q</b>	10 x 10 sq
Fabric 5	<b>F10692-S</b>	10 x 10 sq
Fabric 6	<b>F10692-B</b>	10 x 10 sq
Fabric 7	<b>F01692-G</b>	10 x 10 sq
Fabric 8	<b>F10692-V</b>	10 x 10 sq
Fabric 9	<b>F10690-O</b>	10 x 10 sq
Fabric 10	<b>F10690-S</b>	10 x 10 sq (2)
Fabric 11	<b>F10690-P</b>	10 x 10 sq
Fabric 12	<b>F10690-V</b>	10 x 10 sq
Fabric 13	<b>F10690-Q</b>	10 x 10 sq (2)
Fabric 14	<b>F10690-B</b>	10 x 10 sq
Fabric 15	<b>F10690-G</b>	10 x 10 sq
Fabric 16	<b>F10690-R</b>	10 x 10 sq
Fabric 17	<b>F10690-J</b>	1/4 yard
Fabric 18	<b>F10692-J</b>	1/4 yard
Fabric 19	<b>F10690-K</b>	5/8 yard
Fabric 20	<b>F10691-J</b>	3/8 yard
Backing		1-1/4 yards

**Appliqué Pattern Pieces are on page 8\***  
**Templates are on pages 9, 10, 11**

\*Kit includes precut and prefused appliqué pieces for the cars and the tires. If you do not have the kit, we recommend using fusible interfacing for the appliquéd cars.

For best results, **do not** prewash flannel precuts.

Print at the templates at 100%  
 Trace onto sturdy paper.

Maywood Studio makes every effort to make sure our patterns are accurate.  
 Check for updates at [maywoodstudio.com/projects](http://maywoodstudio.com/projects)

## Cutting

### Fabrics 1 and 8 -Applique Blocks red stars, purple stars

(1) 10" x 10" square \*Note: these will be trimmed to 8-1/2" squares after appliquéd.

### Fabrics 2 and 6 - Line Blocks orange stars, blue stars

A (2) 3-1/2" x 8-1/2" rectangles

### Fabrics 10, 11, 12, 16 -Plus Blocks yellow dots, pink dots, purple dots, red dots

B (4) 3-1/2" x 3-1/2" squares

### Fabrics 3, 4, 5, 7, 9, 14 Curve Blocks pink stars, aqua stars, yellow stars, green stars, orange dots, blue dots

(1) Quarter Circle template

(1) Corner template

### Fabrics 13, 15 Double Curve Blocks aqua dots, green dots

(2) Quarter Circle templates

(1) Middle template

### Fabric 17 black dots

C (3) 2-1/2" x 8-1/2" rectangles

D (4) 2-1/2" x 3-1/2" rectangles

(5) Arch templates

### Fabric 18 black stars

C (4) 2-1/2" x 8-1/2" rectangles

D (4) 2-1/2" x 3-1/2" rectangles

(5) Arch templates

(4) appliqué tires

### Fabric 19 - Borders

#### grey dots

Cut (4) 4-1/2" x WOF strips.

(2) 4-1/2" x 32-1/2" side borders

(2) 4-1/2" x 40-1/2" top and bottom borders

### Fabric 20 - Binding

#### black check

(5) 2-1/2" x WOF strips

For the Appliquéd cars use the additional F10 and F13 10" pieces and follow the Playtime Quilt appliqué pattern.

## Playtime Quilt Instructions

Please read all instructions before you begin.

Seam allowance is 1/4". Fabric is abbreviated to F. Press all seams open.

### Block 1 - Line Blocks

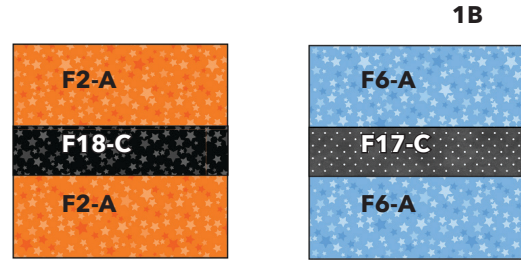
Gather the A rectangles and 1 each of the C star and dot rectangles.

Arrange the Blue Star F6-A rectangles and Black Dot F17-C rectangle in one row of three as shown. 1A

Sew the rectangles together. Press. Make 1. 1B

Repeat with the Orange Star F2-A rectangles and Black Star F18-C rectangle. Make 1.

Block Size: 8-1/2" x 8-1/2"



### Block 2 - Plus Blocks

Gather the B squares, C rectangles, and D rectangles.

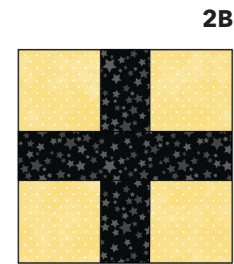
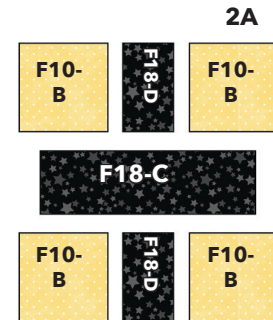
Arrange the Yellow F10-B squares and Black Star F18-D rectangles into two rows of three, adding a Black Star F18-C rectangle in the middle of the two rows. 2A

Sew the B squares and D rectangles together to form rows. Press.

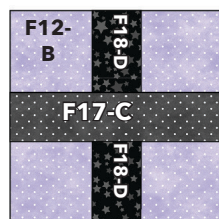
Sew the rows together. Press. Make 1. 2B

Repeat to make 1 each of the Plus Blocks illustrated below.

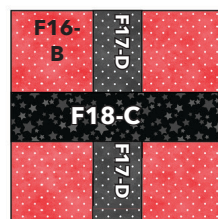
Block Size: 8-1/2" x 8-1/2"



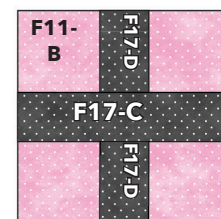
Yellow Dots/Black Stars  
F10-B/F18-D/F18-C



Purple Dots/Black Stars & Stars  
F12-B/F18-D/F17-C



Red Dots/Black Stars & Stars  
F16-B/F17-D/F18-C



Pink Dots/Black Stars & Stars  
F11-B/F17-D/F17-C

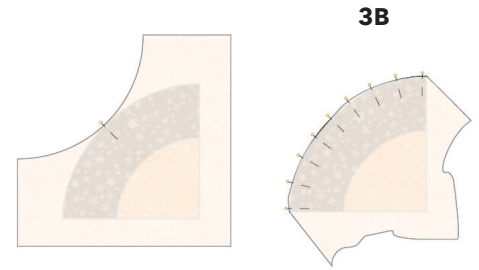
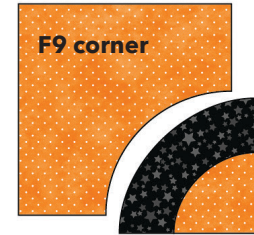
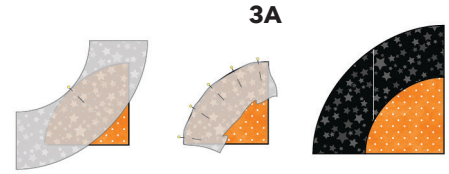
### Block 3 - Curve Block

Pin a Black Star F18 arch to an Orange Dot F9 quarter circle, matching the center points and outer edges. Sew together. Press. 3A

Pin an Orange Dot F9 corner to the quarter circle unit, matching the center points and outer edges. Sew together. Press. 3B

Repeat to make 1 each of the curve blocks illustrated below.

Block Size: 8-1/2" x 8-1/2"



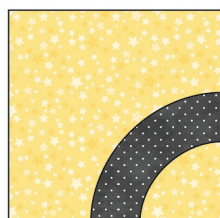
Orange Dots/Black Stars  
F9/F18



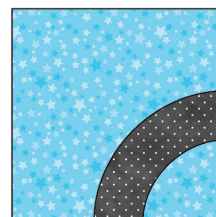
Green Stars/Black Stars  
F7/F18



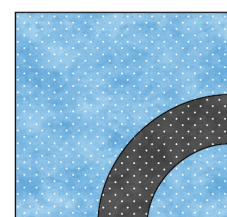
Pink Stars/Black Stars  
F3/F18



Yellow Stars/Black Dots  
F5/F17



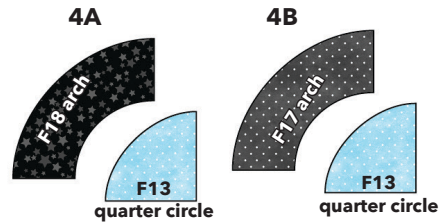
Aqua Stars/Black Dots  
F4/F17



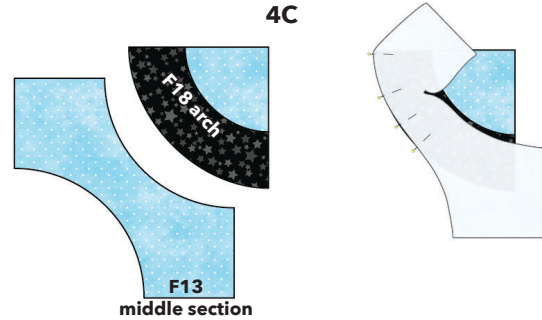
Blue Dots/Black Dots  
F14/F17

## Block 4 - Double Curve Block

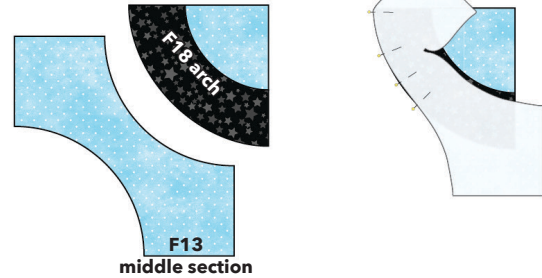
Pin a Black Star F18 arch to an Aqua Dot F13 quarter circle, matching the center points and outer edges. Sew together. Press. Make 1. 4A



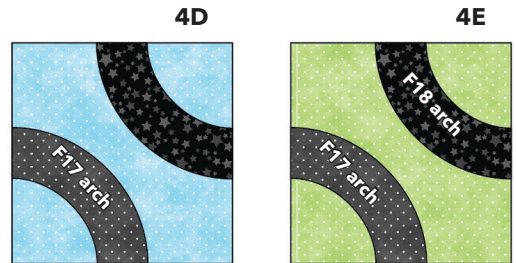
Pin a Black Star F17 arch to an Aqua Dot F13 quarter circle, matching the center points and outer edges. Sew together. Press. Make 1. 4B



Pin an Aqua Dot F13 middle section to the F18/F13 quarter circle unit, matching the center points and outer edges. Sew together and press. 4C



Pin the F17/F13 quarter circle unit to the other side of the middle section, matching the center points and outer edges. Sew together and press. 4D



Repeat to make the Green Dot F15 Double Curve block. 4E

Block Size: 8-1/2" x 8-1/2"

## Appliqué

Pattern Pieces are on p.8. These are included in the kit.

We recommend using fusible web so the pattern pieces are the exact size needed. If you choose to do needle turn appliqué you will need to add seam allowance.



Cut out the appliqué pieces from designated colors. Pay attention to the direction of the cars.

Fuse the cars and tires in the centers of the 10" squares.



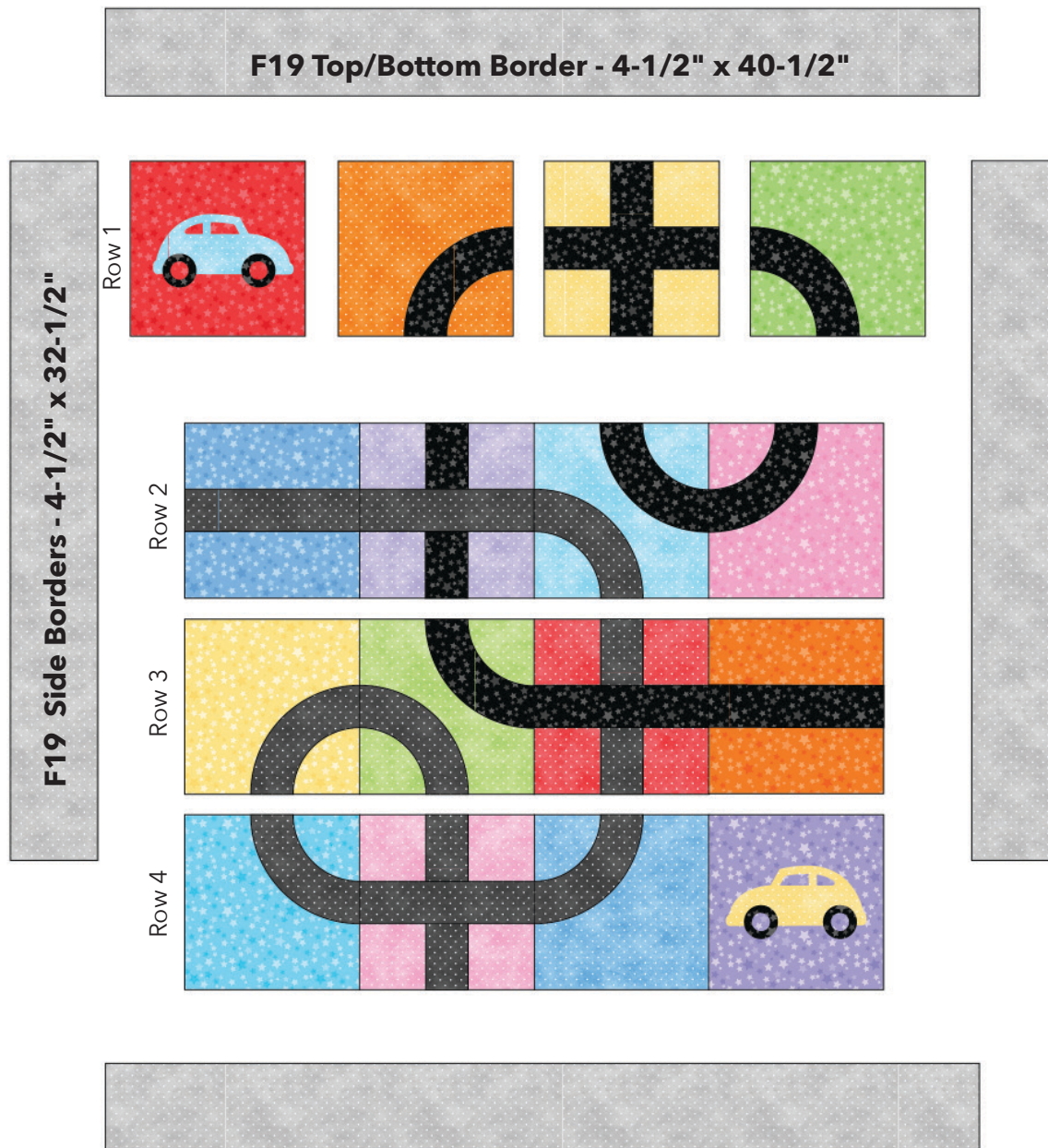
Zig-zag stitch around the edges of all the appliqué pieces. You can also do this step by hand with a whipstitch if you prefer.

Trim blocks to 8-1/2" x 8-1/2" squares.

## Quilt Top

Arrange the blocks as shown in the illustration below, taking care to orient the pieces so the curves create the continuous roads. Sew the blocks into 4 rows of 4 blocks. Press rows in opposite directions to nest. Sew row to row. Press.

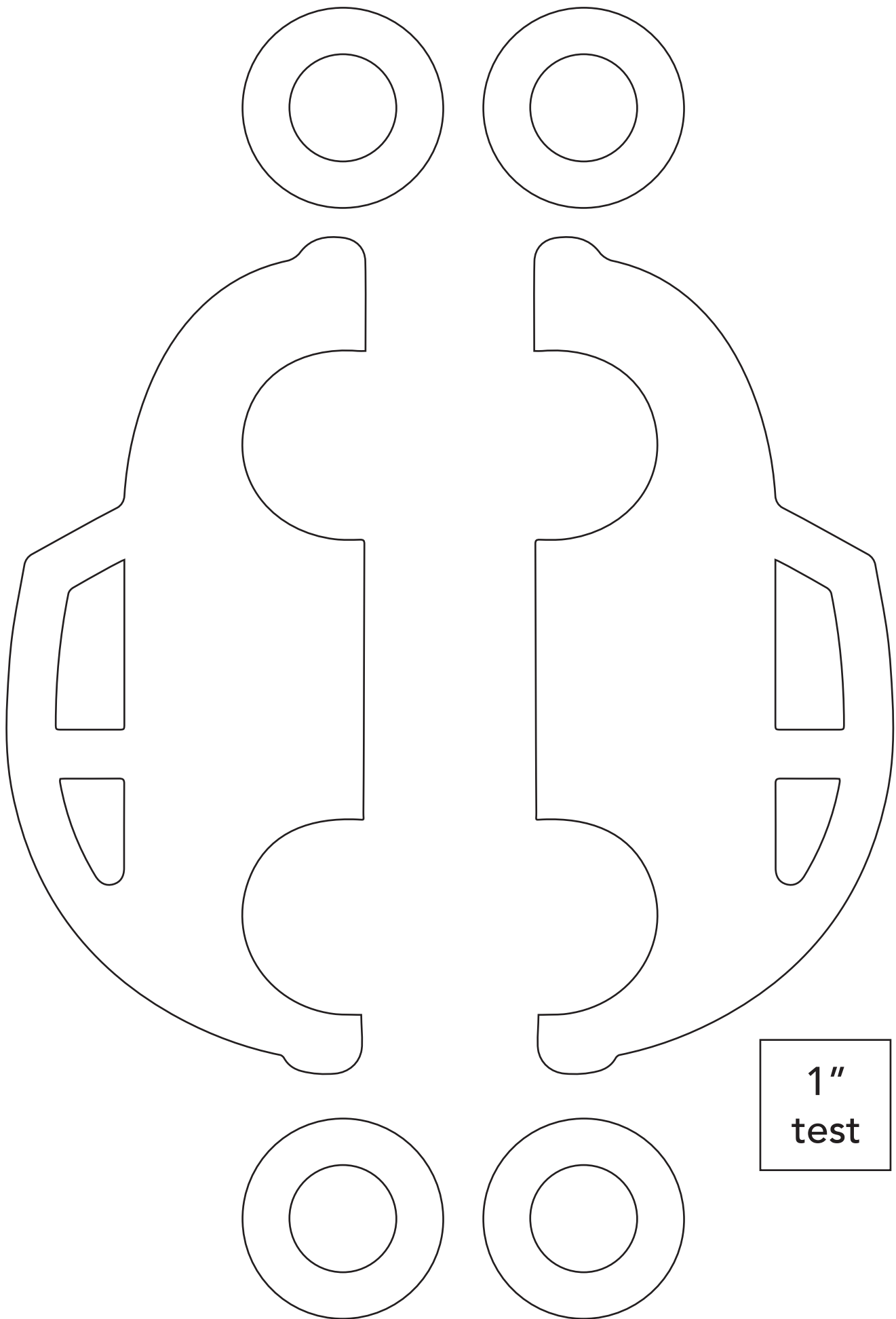
Sew the side borders to the quilt top. Press. Sew the top and bottom borders to the quilt top. Press.



## Finishing

Layer the backing (wrong side up), batting and quilt top (right side up). Baste layers to secure. Quilt as desired. Trim the excess backing and batting.

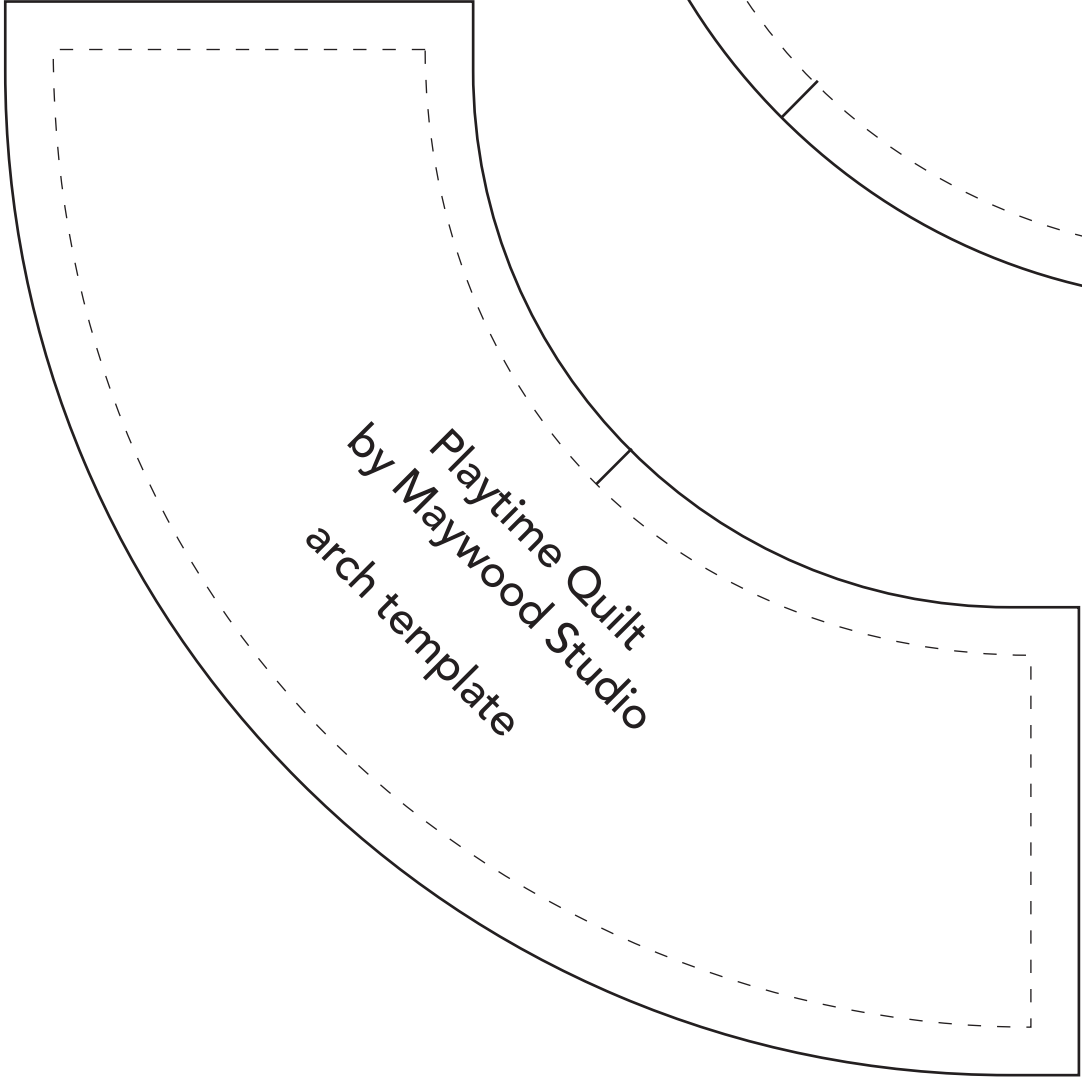
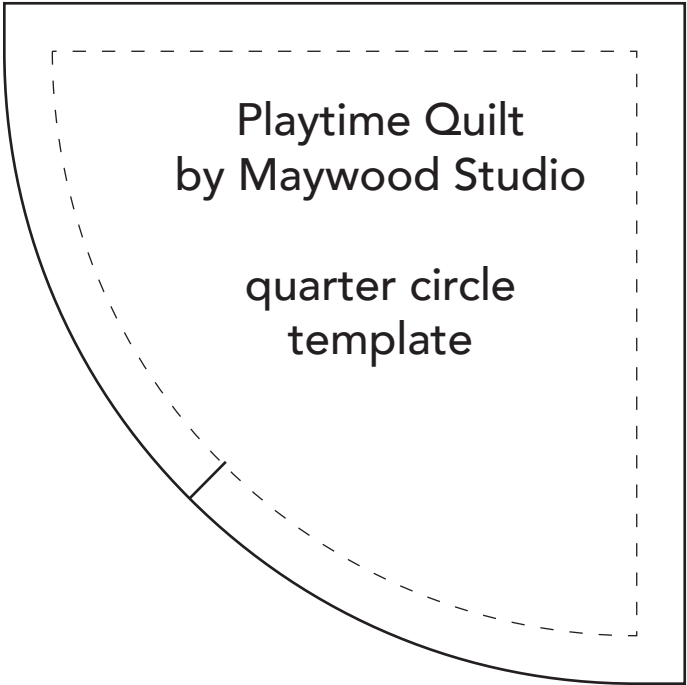
Sew the binding strips together into one continuous strip. Press in half length-wise. Sew the binding to the quilt top with a 1/4" seam allowance. Turn the binding to the back side of the quilt and stitch down by hand with matching thread.



1"  
test



1"  
test



Playtime Quilt  
by Maywood Studio

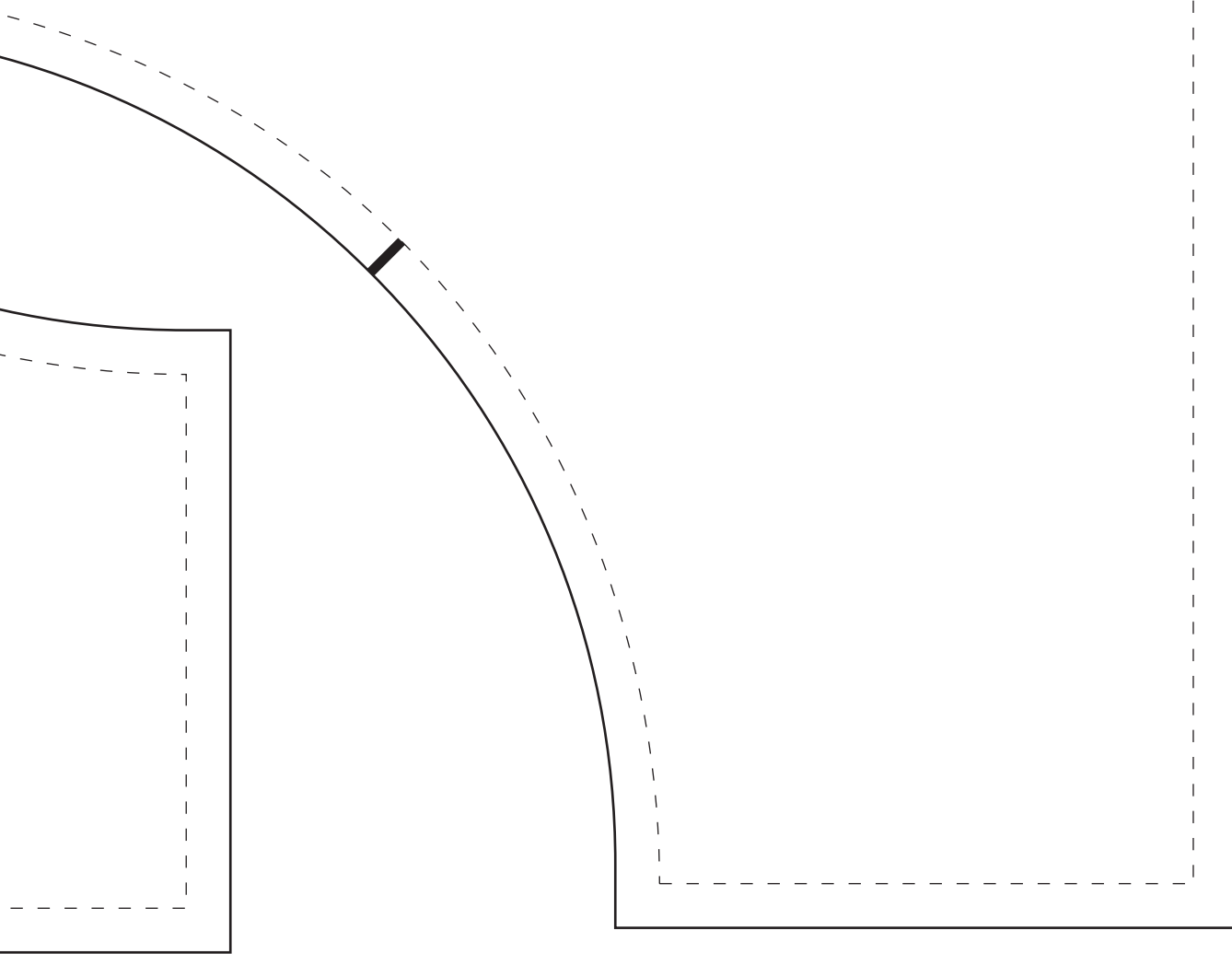
middle  
template

1"  
test

Playtime Quilt  
by Maywood Studio

corner  
template

1"  
test



# Quilt Planning Diagram

Use this diagram to plan your quilt top. Find more projects and inspiration at [maywoodstudio.com](http://maywoodstudio.com)

