

MAYWOOD  STUDIO

BLOOM BRIGHT QUILT



Bloom Bright Quilt

Featuring the Bloom Bright collection from Maywood Studio

48" x 60"

maywoodstudio.com

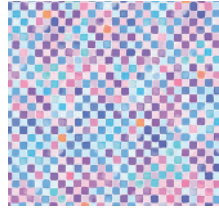
BLOOM BRIGHT



Fabric 1
MASD674-BV



Fabric 2
MASD675-BV



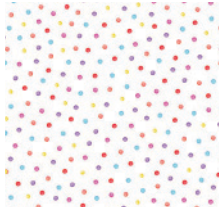
Fabric 3
MASD677-VZ



Fabric 4
MASD672-Z



Fabric 5
MASD673-Z



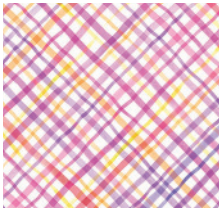
Fabric 6
MASD678-Z



Fabric 7
MASD674-PO



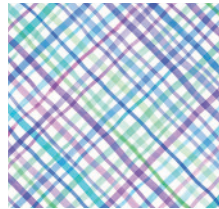
Fabric 8
MASD675-PO



Fabric 9
MASD676-PZ



Fabric 10
MASD671-PO



Fabric 11 - Binding
MASD676-VZ

MAYWOOD  STUDIO

Maywood Studio makes every effort to make sure our patterns are accurate.
Check for updates at maywoodstudio.com/projects

Fabric Requirements

Fabric 1	MASD674-BV	1/3 yard
Fabric 2	MASD675-BV	1/3 yard
Fabric 3	MASD677-VZ	1/3 yard
Fabric 4	MASD672-Z	5/8 yard
Fabric 5	MASD673-Z	3/4 yard
Fabric 6	MASD678-Z	1/3 yard
Fabric 7	MASD674-PO	1/3 yard
Fabric 8	MASD675-PO	1/4 yard
Fabric 9	MASD676-PZ	1/3 yard
Fabric 10	MASD671-PO	5/8 yard
Fabric 11	MASD676-VZ	1/2 yard
Backing	3 yards	

The Bloom Bright quilt uses two 36 patch blocks made with 2-1/2" squares to create a watercolor look. Alternate the A and B blocks facing in the same direction for a dark to light ombre look. Find a bonus layout for a diagonal stripe look on p.7.

WOF - Width of Fabric
 LOF - Length of Fabric
 RST - Right Sides Together
 HST - Half Square Triangle

Cutting

48" x 60"

Fabrics 1 and 7

Cut (4) 2-1/2" x WOF strips into (56) 2-1/2" x 2-1/2" squares

Fabrics 2 and 8

Cut (3) 2-1/2" x WOF strips into (40) 2-1/2" x 2-1/2" squares

Fabrics 3 and 9

Cut (4) 2-1/2" x WOF strips into (50) 2-1/2" x 2-1/2" squares

Fabrics 4 and 10

Cut (7) 2-1/2" x WOF strips into (110) 2-1/2" x 2-1/2" squares

Fabric 5

Cut (9) 2-1/2" x WOF strips into (140) 2-1/2" x 2-1/2" squares

Fabric 6

Cut (4) 2-1/2" x WOF strips into (56) 2-1/2" x 2-1/2" squares

Fabric 11 Binding

Cut (6) 2-1/4" x WOF strips. Sew together, end to end.

Bloom Bright Quilt Instructions

Please read all instructions before you begin. Seam allowance is 1/4".
Press in the direction of the arrows.

Make the Purple A Blocks

Sew each row as illustrated.
Press rows to nest.

Row 1: 1-1-1-2-3-4

Row 2: 1-1-2-3-4-4

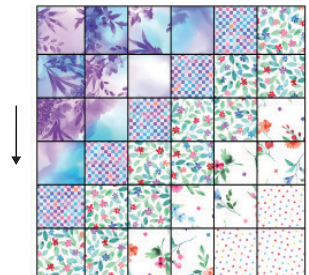
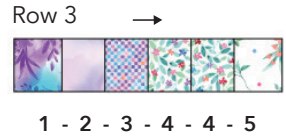
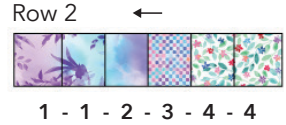
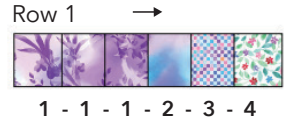
Row 3: 1-2-3-4-4-5

Row 4: 2-3-4-4-5-5

Row 5: 3-4-4-5-5-6

Row 6: 4-4-5-5-6-6

Sew row to row. Press down.
Make 10 A Blocks



Make the Pink B Blocks

Sew each row as illustrated.
Press rows to nest.

Row 1: 7-7-7-8-9-10

Row 2: 7-7-8-9-10-10

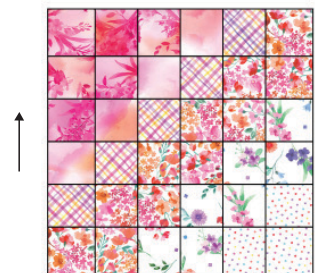
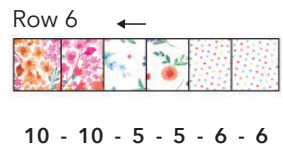
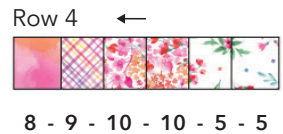
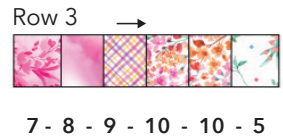
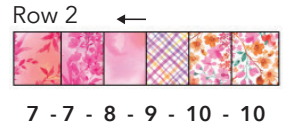
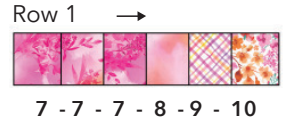
Row 3: 7-8-9-10-10-5

Row 4: 8-9-10-10-5-5

Row 5: 9-10-10-5-5-6

Row 6: 10-10-5-5-6-6

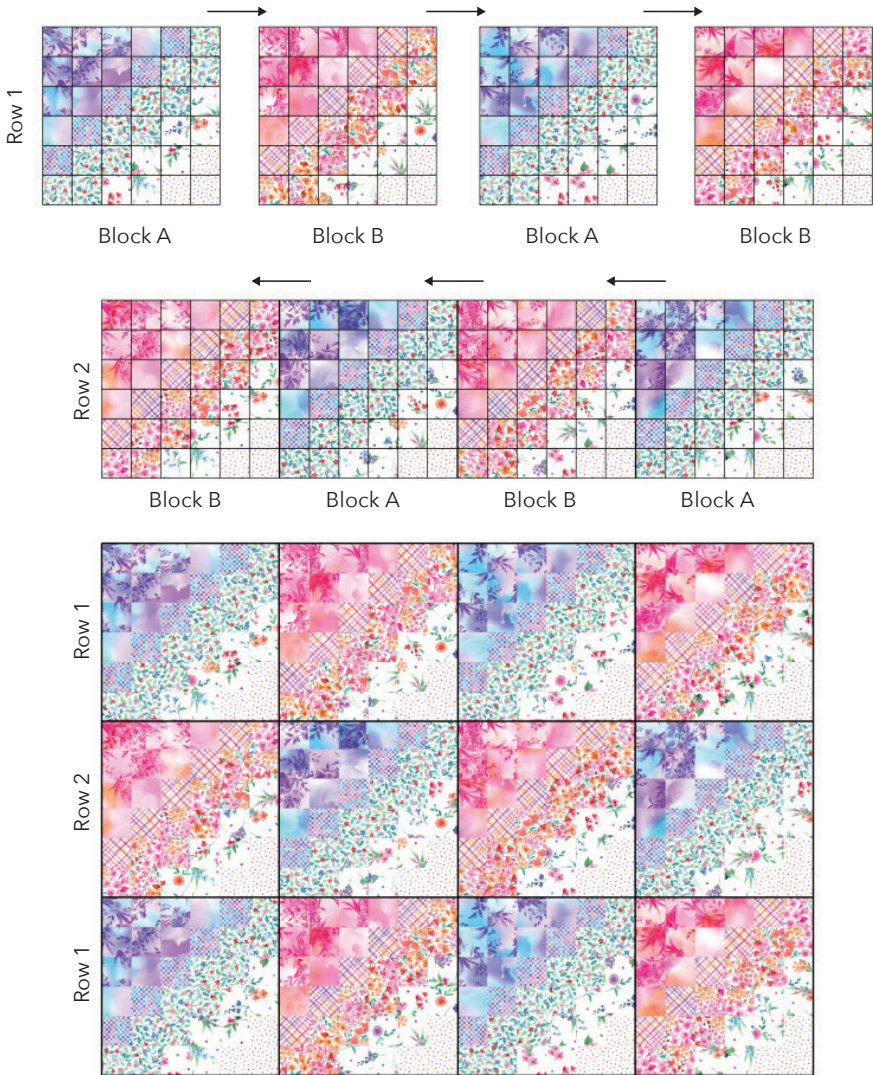
Sew row to row. Press up.
Make 10 B Blocks



B Blocks - Make 10
12-1/2" x 12-1/2"

Top Assembly

1. Lay out the quilt blocks as shown below.
2. Sew blocks into rows. Make 3 of Row 1 and 2 of Row 2.
3. Press to nest seams.
4. Sew rows together. Press in one direction.



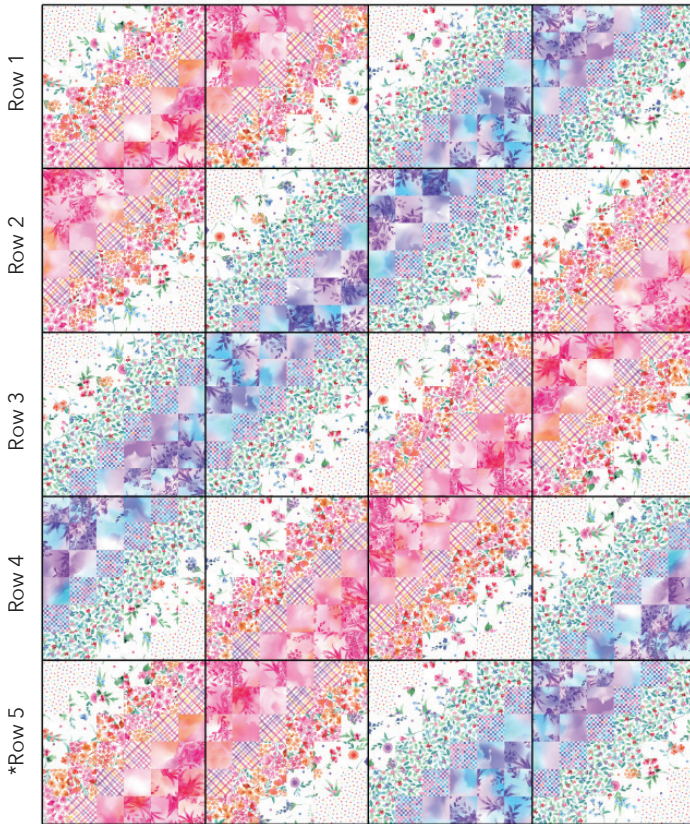
Finishing

1. Layer the backing (wrong side up), batting and quilt top (right side up). Baste layers to secure. Quilt as desired. Trim the excess backing and batting.
2. Sew the binding strips together into one continuous strip. Press in half length-wise. Sew the binding to the quilt top with a 1/4" seam allowance. Turn the binding to the back side of the quilt and stitch down by hand with matching thread.

Alternate Layout

For a striped diagonal layout arrange the blocks in the following order, making sure to turn the blocks as illustrated. Press all seams down to nest.

- Row 1: B-B-A-A *Make 2
- Row 2: B-A-A-B
- Row 3: A-B-A-A
- Row 4: A-B-B-A
- Row 5 and Row 1 are the same



Quilt Planning Diagram

Use this diagram to plan your quilt top.

