

Dewdrops

ANDOVER FABRICS



Line by Line Quilt designed by: **Janet Houts**

Quilt Size: **72" x 96"** • Skill Level: Confident Beginner

Line by Line Quilt

Introducing Andover Fabrics new collection: **DEWDROPS** by Andover Fabrics

Quilt designed by Janet Houts

Quilt finishes 72" x 96"
12 Big Blocks: 24" x 24"

The softly muted colors will bring tranquility to any space where this coverlet-size quilt is displayed. The piecing is simple enough for anyone with a little sewing experience.

Fabric Requirements

		Yardage	Fabric	
Fabric A	blocks	1 yard	CS-10-Oyster	
Fabric B	blocks	¾ yard	CS-10-Champagne	
Fabric C	blocks	⅝ yard	CS-10-Oatmeal	
Fabric D	blocks	½ yard	CS-10-CafeAuLait	
Fabric E	blocks	¼ yard	CS-10-Cocoa	
16 Light	blocks	⅜ yard each		
	709-G	710-P	711-G	712-Y
	713-LB	714-LB	715-R	716-O
	717-P	718-P	719-E	720-LB
	721-O	722-P	723-E	724-LB
Binding		¾ yard	CS-10-CafeAuLait	
Backing		6 yards	716-O	

Cutting Directions

Note: Read assembly directions before cutting patches. All measurements are cut sizes and include ¼" seam allowances. WOF designates the width of fabric from selvedge (approximately 42" wide).

Fabric A

Cut (48) strips 2½" x 10½"

Fabric B

Cut (48) strips 2½" x 8½"

Fabric C

Cut (48) strips 2½" x 6½"

Fabric D

Cut (48) strips 2½" x 4½"

Fabric E

Cut (48) squares 2½"

16 Light From each: (Read all of Step 1 before cutting strips.)

Cut (6) strips 2½" x 12½"

Cut (3) strips 2½" x 10½"

Cut (3) strips 2½" x 8½"

Cut (3) strips 2½" x 6½"

Cut (3) strips 2½" x 4½"

Binding

Cut (9) strips 2½" x WOF for binding

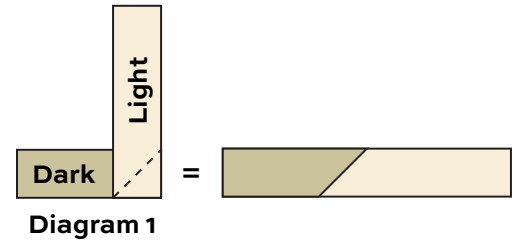
Backing

Cut (2) lengths 41" x 106", pieced to fit quilt top with overlap on all sides

Line by Line Quilt

- Each pieced strip in the block is made with an easy stitch-and-flip technique. The strips cut from Fabrics A-E are referred to as “dark.” They have a specific placement in each block. The strips cut from 16 light fabrics are placed randomly within each block. It is up to you to arrange them as you please.

Referring to Diagram 1, position a dark strip (Oatmeal 6½” strip) right side up horizontally along a line of the cutting mat, if you are using one. Lay a light 8½” strip right side down vertically on the right end of the dark strip, again aligning the strip with the lines of the cutting mat. Ends of the strips should align. Draw a diagonal line at the bottom end of the light strip in the direction shown, having it begin and end where the 2 strips overlap. Stitch along the drawn line. Press the seam allowance toward the dark strip. The unit should measure 12½” long. If it does not, adjust your pressing technique. (Hint: You can cut each light strip ½” longer than the measurements listed, and trim the pieced strip after stitching, measuring 12½” from the dark end.) Repeat this step with all the Fabric A-E strips and the light strips, referring to the block diagram for placement of lengths.

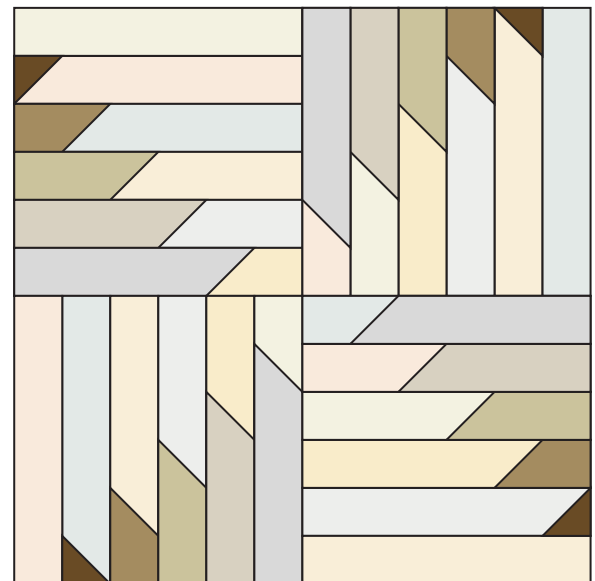


	Light	2½" x 12½"
E	2½"	12½"
D	4½"	10½"
C	6½"	8½"
B	8½"	6½"
A	10½"	4½"

Block – Make 48

Optional: You might find it easier to draw the diagonal line on the end of each light strip before you align it with the dark strip. Mark a dot 2½” from the end of the light strip along one edge, and draw the diagonal from one corner to the dot. Just be certain that the diagonal line is in the correct orientation. Once you have drawn it correctly, keep the marked strip as a guide for marking all others.

- Once the light and dark strips are joined, arrange the pieced strips in the order shown, being sure that the same light print does not appear more than once in a block. Make 48 blocks. They should measure 12½” square.
- Arrange 4 blocks into a large square, turning each 90 degrees to form the design. Sew 2 blocks together to make the top half. Sew 2 blocks to make the bottom half. Press the seam allowances in opposite directions between the 2 rows. Join the halves to make a Big Block. It should measure 24½” square.
- Arrange and join the Big Blocks into 4 rows of 3 blocks each. Press the seam allowances in opposite directions between the rows. Finally, join the rows.

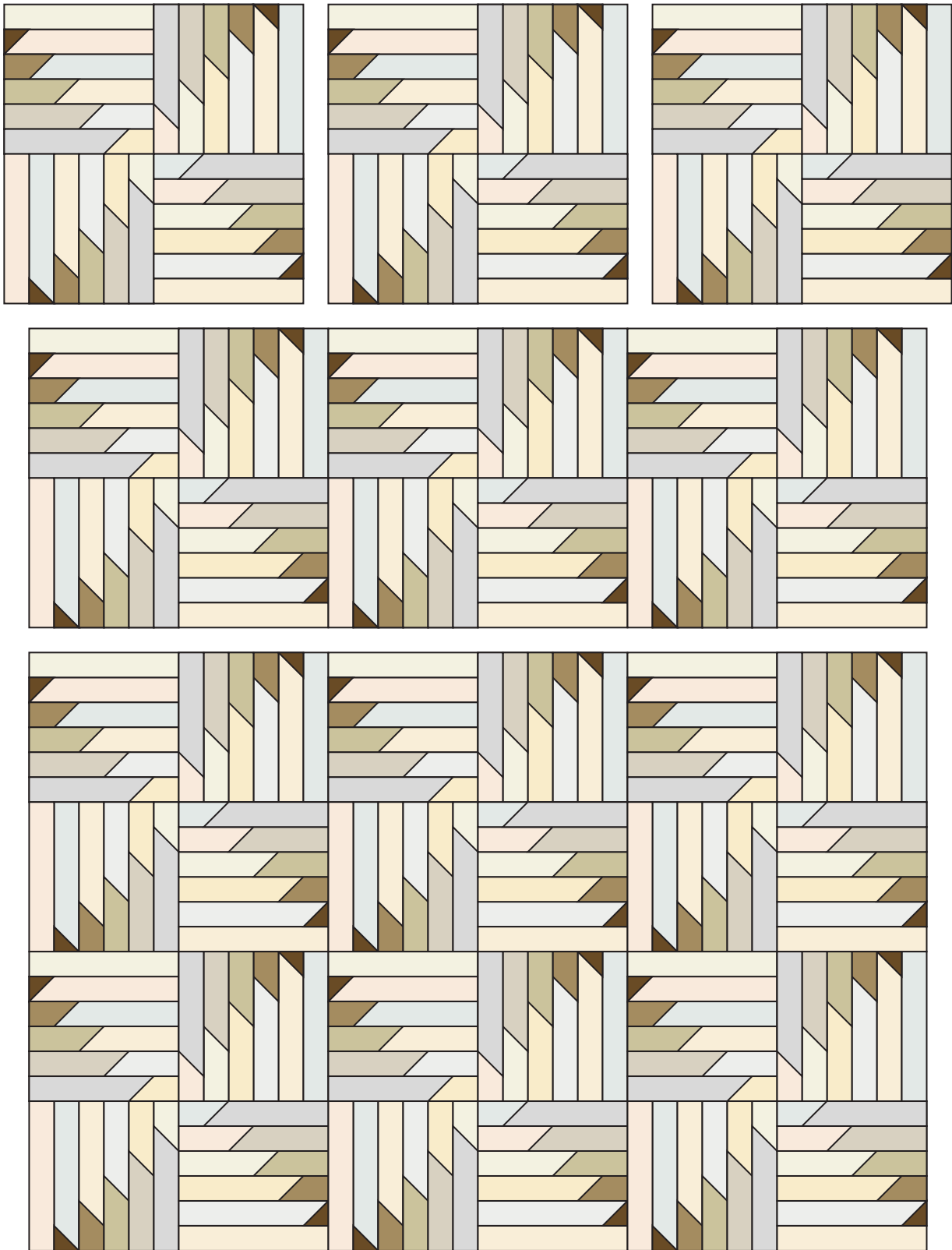


Big Block – Make 12

Finishing the Quilt

- Layer the quilt with batting and backing and baste. Quilt in the ditch around patches. Or, quilt an overall design from edge to edge. Bind to finish the quilt.

Line by Line Quilt



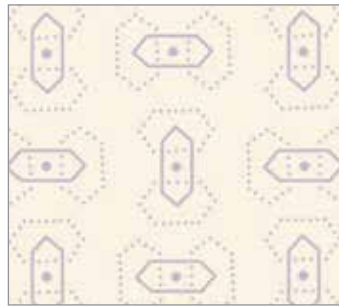
Quilt Assembly

Dewdrops

ANDOVER FABRICS



709-G



710-P



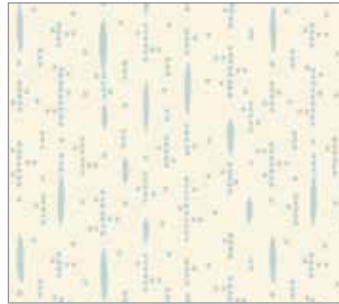
711-G



712-Y



713-LB



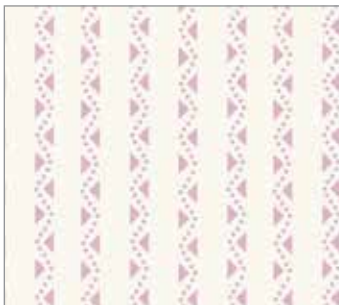
714-LB



715-R



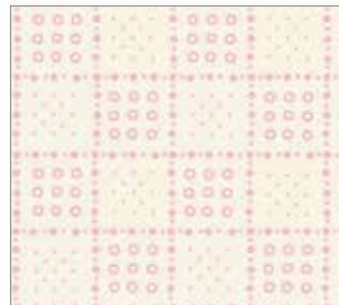
716-O



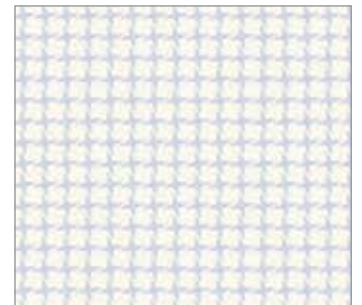
717-P



718-P



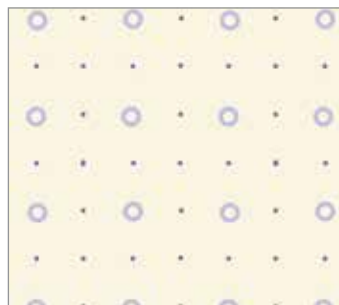
719-E



720-LB



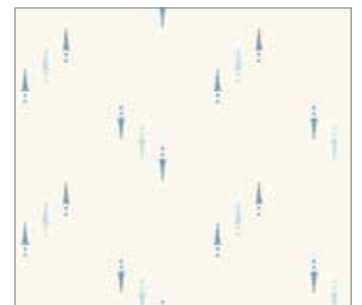
721-O



722-P

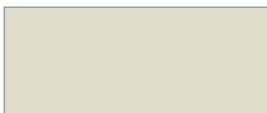


723-E

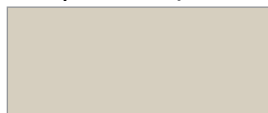


724-LB

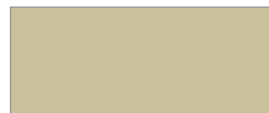
Additional fabric from **Century Solids** by Andover Fabrics



CS-10-Oyster



CS-10-Champagne



CS-10-Oatmeal



CS-10-CafeAuLait



CS-10-Cocoa

All fabrics are used in quilt pattern. Fabrics shown are 100% of actual size.