

MAYWOOD  STUDIO

# *Sugar Lilac Quilt*

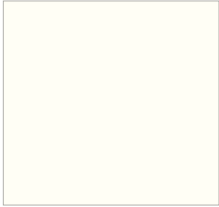


## **Sugar Lilac Quilt**

Featuring the Sugar Lilac collection from Maywood Studio

**52" x 68"**

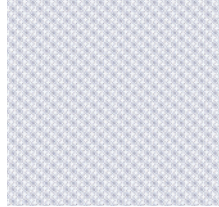
[maywoodstudio.com](http://maywoodstudio.com)



Fabric 1  
MAS603-SW



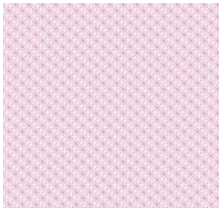
Fabric 2  
10600-B



Fabric 3  
10625-B



Fabric 4  
10623-B



Fabric 5  
10624-P



Fabric 6  
10624-B



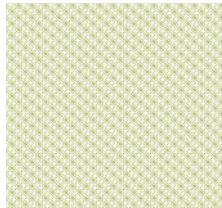
Fabric 7  
10624-P



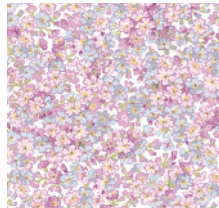
Fabric 8  
10624-G



Fabric 9  
10622-W



Fabric 10  
10625-G



Fabric 11  
10621-W

MAYWOOD  STUDIO

Maywood Studio makes every effort to make sure our patterns are accurate.  
Check for updates at [maywoodstudio.com/projects](http://maywoodstudio.com/projects)

## Cutting

### Fabric 1

Cut (4) strips 4-1/2" x WOF into:  
 A: (28) 4-1/2" squares  
 A1: (4) 3-1/2" squares

Cut (1) 2-1/2" x WOF strip into  
 B: (2) 2-1/2" x 8-1/2" rectangles  
 E: (12) 2-1/2" squares

Cut (6) 1-1/2" x WOF strip into:  
 C: (4) 1-1/2" x 8-1/2" rectangles  
 D: (144) 1-1/2" squares

Cut (2) 1-1/4" x WOF strips into:  
 F: (48) 1-1/4" squares

### Fabric 2

Cut (1) 14-1/2" x WOF strip into:  
 G: (4) 8-1/2" x 14-1/2" rectangles

### Fabric 3

Cut (1) 4-1/2" x WOF strip into:  
 H: (8) 4-1/2" squares

### Fabric 4

Cut (4) strips 4-1/2" x WOF into:  
 I: (28) 4-1/2" squares  
 J: (2) 4-1/2" x 3-1/2" rectangles

### Fabric 5

Cut (1) 4-1/2" x WOF strip into:  
 K: (8) 4-1/2" squares  
 Binding: Cut (7) 2-1/2" x WOF strips

### Fabric 6

Cut (1) 4-1/2" x WOF strip into:  
 L: (8) 4-1/2" squares  
 Cut (1) 7-1/2" x WOF strip into:  
 M: (4) 7-1/2" squares

### Fabric 7

Cut (1) 4-1/2" x WOF strip into:  
 N: (8) 4-1/2" squares

### Fabric 8

Cut (1) 4-1/2" x WOF strip into:  
 O: (8) 4-1/2" squares  
 Cut (5) 3-1/2" x WOF strips. Piece into:  
 (2) 3-1/2" x 36-1/2" border strips  
 (2) 3-1/2" x 52-1/2" border strips

## Cutting Continued

### Fabric 9

Cut (6) 2-1/2" x WOF strips. Piece into:  
 (2) 2-1/2" x 52-1/2" border strips.  
 (2) 2-1/2" x 64-1/2" border strips

### Fabric 10

Cut (1) 4-1/2" x WOF strip into:  
 P: (8) 4-1/2" squares

### Fabric 11

Cut (2) 3-1/2" x WOF strips into:  
 Q: (16) 3-1/2" squares  
 Cut (4) 3-1/2" x WOF strips into:  
 (2) 3-1/2" x 30-1/2" border strips  
 (2) 3-1/2" x 36-1/2" border strips

## Fabric Requirements

Fabric 1	MAS603-SW	1 yard
Fabric 2	10600-B	1/2 yard
Fabric 3	10625-B	1/4 yard
Fabric 4	10623-B	5/8 yard
Fabric 5 + binding	10624-P	2/3 yard
Fabric 6	10624-B	3/8 yard
Fabric 7	10624-P	1/4 yard
Fabric 8	10624-G	2/3 yard
Fabric 9	10622-W	1/2 yard
Fabric 10	10625-G	1/4 yard
Fabric 11	10621-W	5/8 yards
Backing	4 yards	

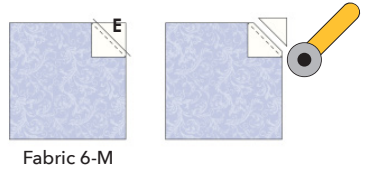
WOF - Width of Fabric  
 LOF - Length of Fabric  
 RST - Right Sides Together  
 HST - Half Square Triangle

## Sugar Lilac Quilt Instructions

Please read all instructions before you begin. Seam allowance is 1/4. Fabric is abbreviated as 'F' - for example, F1 refers to Fabric 1.

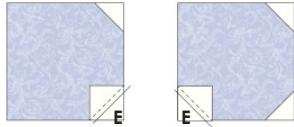
### Center Flower Block

1. Draw a diagonal line from corner to corner on the wrong side of (12) F1-E squares.

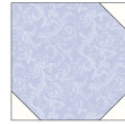


Fabric 6-M

2. Place (1) F1-E square on the corner of a Fabric 6-M square. Sew on the diagonal line. Trim 1/4" away from the sewn line. Press away from center.

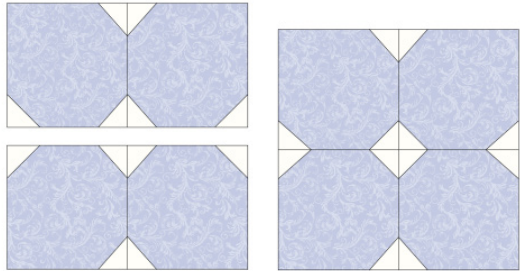


3. Repeat on two more corners as illustrated so three sides have the cut-away F1 corners. Make 4.



Make 4  
7-1/2" x 7-1/2"

4. Sew 2 step 3 units together, matching sides with two F1 triangles as illustrated. Repeat with the other two units. Sew the rows together, matching the F1-E triangles.

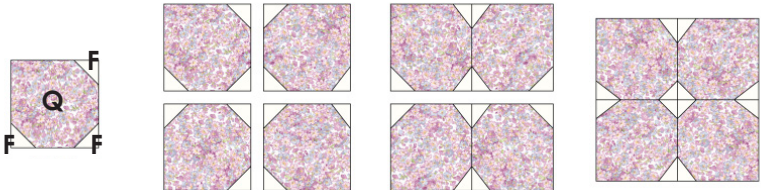


Center Block  
Make 1  
14-1/2" x 14-1/2"

### Small Flower Blocks

1. Gather the (48) Fabric 1-F squares and the Fabric 11-Q squares.

2. Repeat the process to make the small flower blocks.



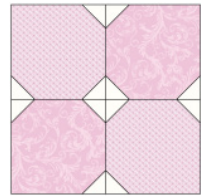
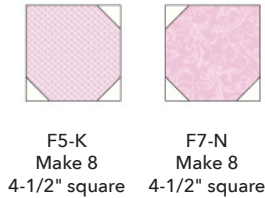
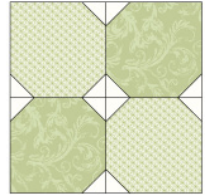
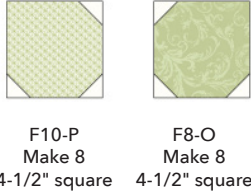
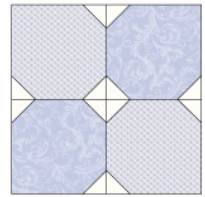
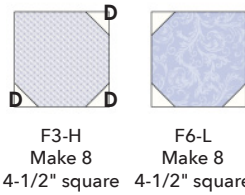
Make 16  
3-1/2" x 3-1/2"

Small Flowers  
Make 4  
6-1/2" x 6-1/2"

## Medium Flower Blocks

1. Draw a diagonal line from corner to corner on the wrong side of (144) F1-D squares.

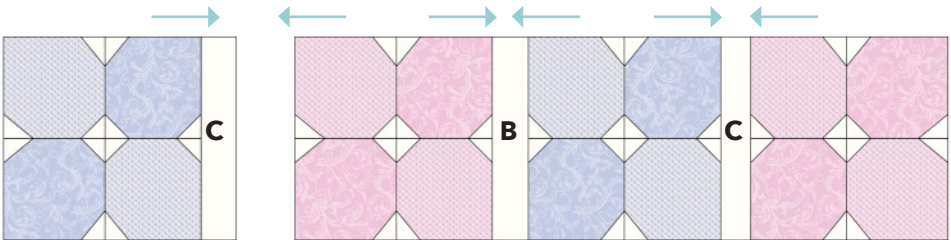
2. Repeat the process from the Center Flower Blocks, steps 1-4 using the F1-D squares and the 4-1/2" blue F3-H and F6-L squares, green F10-P and F8-O squares, and the pink F5-K and F7-N squares.



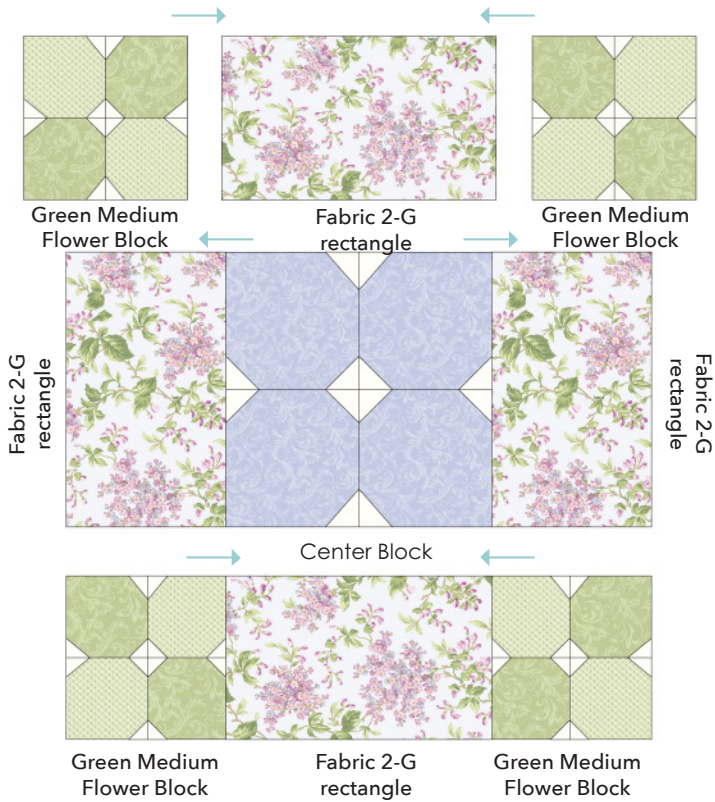
## Flower Rows

1. Sew the flower blocks to the white Fabric 1-C and Fabric 1-B rectangles as illustrated.

Press toward Fabric 1. Row will measure 36-1/2". Make 2 rows.



Make 2 rows  
8-1/2" x 36-1/2"



### Sew the Quilt Center

*\*Refer to assembly diagram on p.8 for completed center layout.*

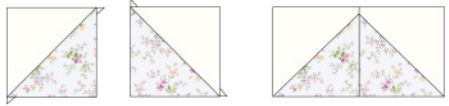
1. Gather the Center Block, 4 Green Medium Flower Blocks, and the Fabric-2 G rectangles.
2. Lay the rows out as illustrated. Sew into rows. Press toward Fabric 2-G rectangles.
3. Sew row to row. Press in one direction.
4. Sew the F11 border strips to the sides of the quilt center. Press toward borders.
5. Sew the F11 border strips to the top and bottom of the quilt center. Press toward borders.
6. Sew the pieced blue and pink flower rows to the top and bottom of the quilt center. Press toward borders.

### HST Units (Half Square Triangles)

1. Mark a diagonal line from corner to corner on the wrong side of 28 F4-I squares.



2. Place 1 F4-I square RST over 1 F1-A square. Sew  $1/4$ " from either side of the marked line. Cut on the marked line. Press pairs in opposite directions to nest and trim to  $3\text{-}1/2$ " square.

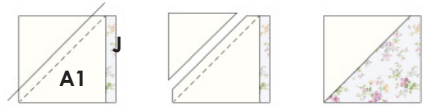


3. Sew 2 HST units together with the Fabric 4-I pieces touching as illustrated. Make 28.

Make 28  
 $3\text{-}1/2$ " x  $6\text{-}1/2$ "

### Flying Geese Units

1. Mark a diagonal line from corner to corner on the wrong side of the remaining 4 F1-A1 squares.



2. Place 1 F1-A1 square over 1 F4-J rectangle. Sew  $1/4$ " away from the marked line. Cut away the corner on the marked line. Press toward F1.



3. Repeat on the opposite side for the step 2 unit. Press toward F1. Make 2.

Make 2  
 $3\text{-}1/2$ " x  $4\text{-}1/2$ "

### Borders

2. Top and bottom borders: Sew 6 HST units together into a row. Press open.

3. Sew the  $36\text{-}1/2$ " F8 border strip to the HST row. Press toward Fabric 8.

4. Sew the small pink flower blocks to each end. Make 2.



5. Side rows: Sew 4 HST units - a flying geese unit - and 4 HST units together. Press open.

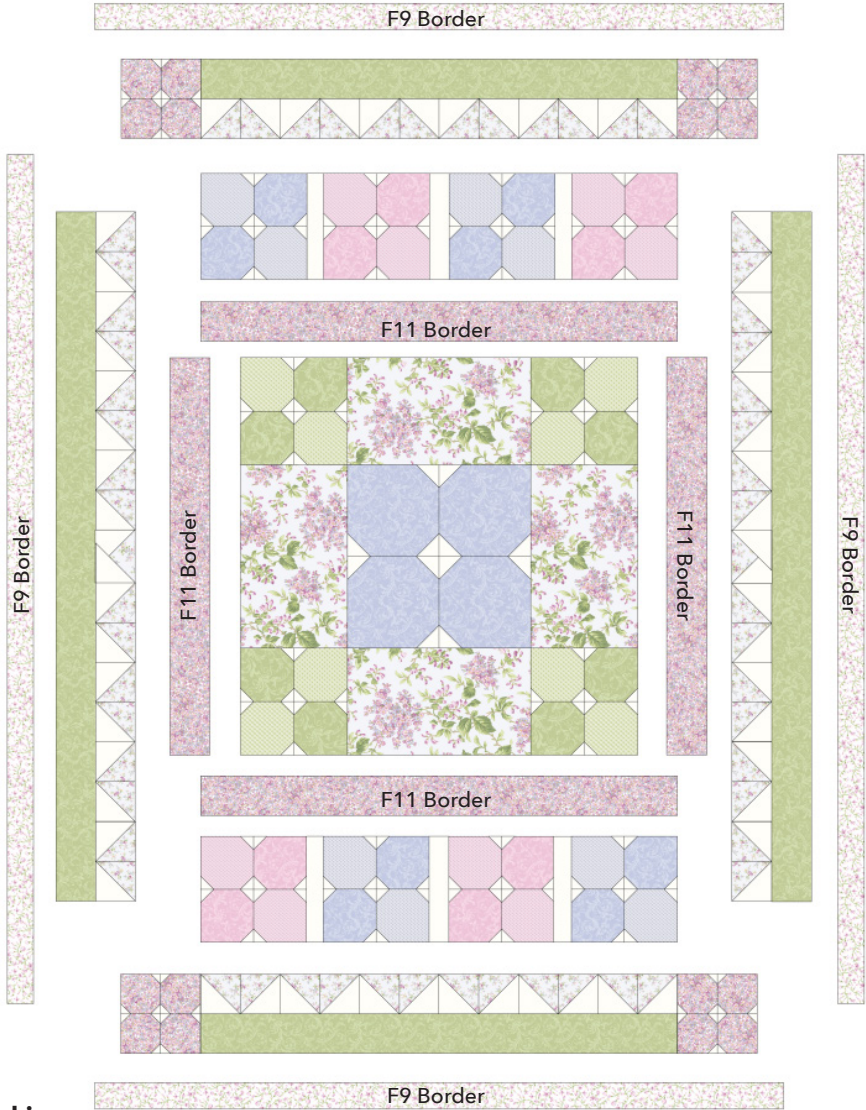
6. Sew the  $52\text{-}1/2$ " pieced border strip to the top of the row. Press toward the F8 border. Make 2.



## Top Assembly

Tip: Pin the borders onto the quilt top starting at the middle. Pin the ends and then pin inbetween.

1. Sew the pieced side borders to the quilt top. Press.
2. Sew the pieced top and bottom borders to the quilt top. Press.
3. Sew the F9 side borders to the quilt top. Press.
4. Sew the F9 top and bottom borders to the quilt top. Press.



## Finishing

1. Layer the backing (wrong side up), batting and quilt top (right side up). Baste layers to secure. Quilt as desired. Trim the excess backing and batting.
2. Sew the binding strips together into one continuous strip. Press in half length-wise. Sew the binding to the quilt top with a 1/4" seam allowance. Turn the binding to the back side of the quilt and stitch down by hand with matching thread.