

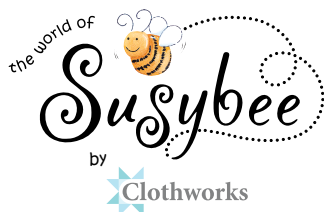
On the Fence

Featuring Barnyard Blues Fabrics by Susybee



44" x 60"

Designed by Terri Butler
mamasaidsewllc.com



On the Fence

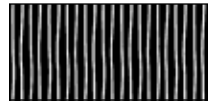
Featuring Barnyard Blues Fabrics by Susybee

Fabric Requirements

Requirements assume 40" of usable fabric



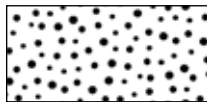
$\frac{2}{3}$ yard SB20415-760
Border 3



$\frac{5}{8}$ yard
SB20105-199
Binding



$\frac{1}{2}$ yard SB20103-760
*4-Patch Sashing Strips
& Border 2*



$\frac{1}{4}$ yard SB20171-100
Border 1



3 yards
SB20051-100
Backing



$\frac{1}{4}$ yard SB20053-101
4-Patch Sashing Strips



2 yards
SB20416-760

Cutting

WOF = width of fabric READ ALL INSTRUCTIONS BEFORE YOU START

From Denim Noises SB20415-760, cut:

- (5) $4\frac{1}{2}$ " X WOF strips. Trim selvages, stitch short ends together, and sub-cut into:
 - (2) $4\frac{1}{2}$ " X $51\frac{1}{2}$ ", for right and left border #3.
 - (2) $4\frac{1}{2}$ " X $44\frac{1}{2}$ ", for top and bottom border #3.

From Denim Swirls SB20103-760, cut:

- (5) $1\frac{1}{2}$ " X WOF strips. Trim selvages, stitch short ends together, and sub-cut into:
 - (2) $1\frac{1}{2}$ " X $49\frac{1}{2}$ ", for right and left border #2.
 - (2) $1\frac{1}{2}$ " X $36\frac{1}{2}$ ", for top and bottom border #2.
- (2) $2\frac{1}{2}$ " X WOF strips, for 4 Patch sashing strips.

From White Irregular Dot SB20171-100, cut:

- (4) $1\frac{1}{2}$ " X WOF strips. Trim selvages, stitch short ends together, and sub-cut into:
 - (2) $1\frac{1}{2}$ " X $47\frac{1}{2}$ ", for right and left border #1.
 - (2) $1\frac{1}{2}$ " X $34\frac{1}{2}$ ", for top and bottom border #1.

From White Squiggle SB20053-101, cut:

- (2) $2\frac{1}{2}$ " X WOF strips, for 4 Patch sashing strips.

From Black Freehand Stripe SB20105-199, cut:

- (8) $2\frac{1}{2}$ " X WOF strips for binding.

On the Fence

Featuring Barnyard Blues Fabrics by Susybee

Cutting Continued

From Barnyard Blues
Double Border SB20416-760:

- Trim away the blue part of the border from both edges of border print fabric.
- From trimmed edge, measure and cut $13\frac{1}{2}$ " strips. Sub cut into: (3) $13\frac{1}{2}$ " X $32\frac{1}{2}$ " sections.

$13\frac{1}{2}$ "

$13\frac{1}{2}$ "



Quilt Assembly

All seams $\frac{1}{4}$ "

Step 1.

Sashing Strips. Make two strip sets using $2\frac{1}{2}$ " Denim Swirls and $2\frac{1}{2}$ " White Squiggle strips:

- Press seam toward Denim Swirls.
- Sub cut into $2\frac{1}{2}$ " sections.
- Arrange $2\frac{1}{2}$ " sections as shown and stitch together to make 16- 4 Patch units, $4\frac{1}{2}$ " X $4\frac{1}{2}$ " finished.
- Make two sashing strips, each with (8) 4-Patch units.



Make 16
4-Patch
units.



Make 2 Sashing Strips

Step 2.

- Arrange & stitch Border Strip sections and Sashing Strips as shown on page 3 in Step 2 Diagram.

Step 3.

- Stitch borders 1-3 in order, always add side border strips before top and bottom strips.

On the Fence

Featuring Barnyard Blues Fabrics by Susybee

Quilt Layout



Step 2. Diagram
Stitch border sections to
sashing strips before
adding borders.

Quilt Finishing

1. Layer quilt top with batting & backing.
2. Quilt as desired.
3. Square quilt.
4. To prepare binding, trim ends of binding strips facing up & cut at 45° angle. Stitch together & press in half.
5. Bind as usual.

Not For Resale. While every attempt has been made to give accurate measurements, yardage requirements, and construction directions, this does not allow for personal variations in measuring, cutting and/or sewing. Clothworks is not responsible for printing errors. Check clothworks.com for pattern updates.