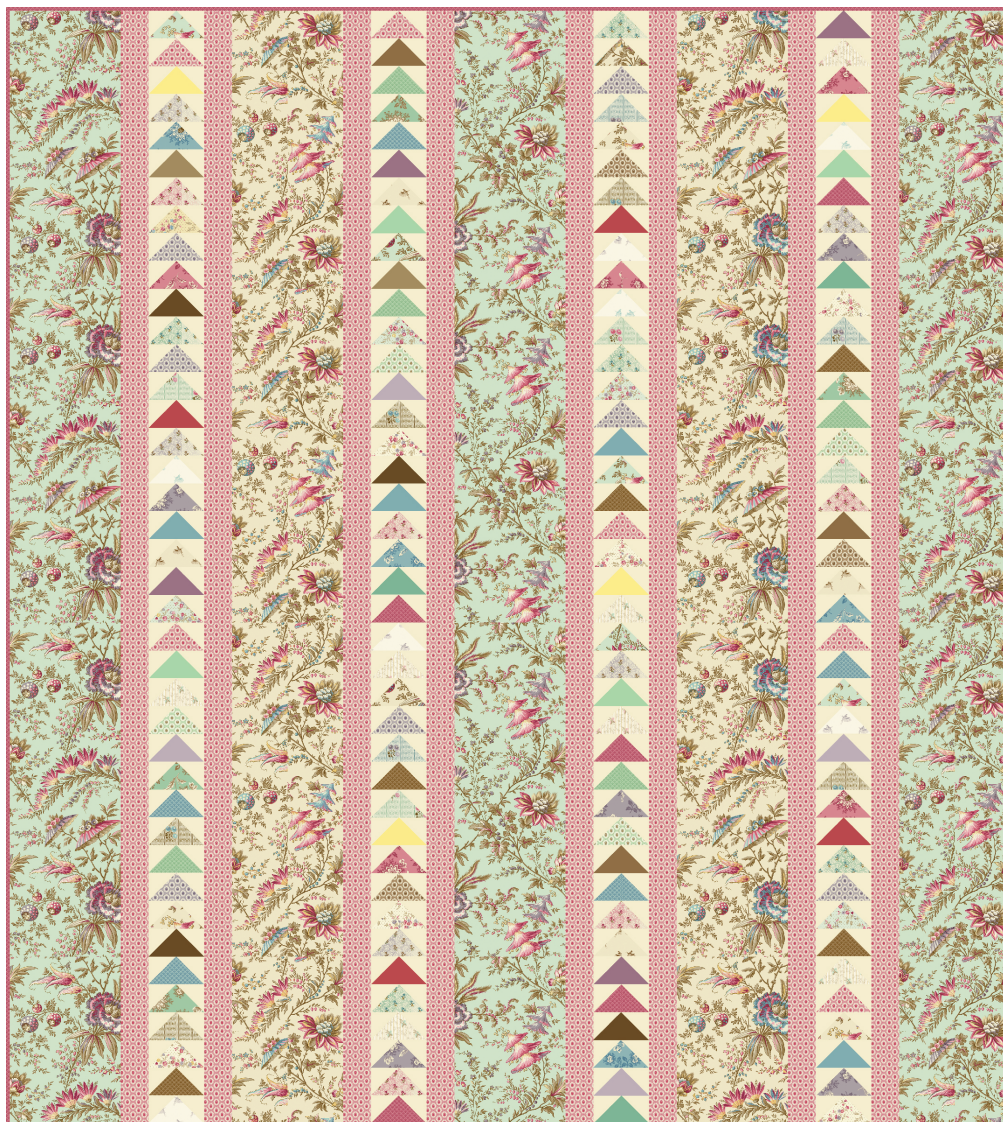


Sienna

MAX & LOUISE



Sienna's Garden • Quilt designed by: **Max & Louise** • Quilt Size: **72" x 80"**
Skill Level: **Advanced Beginner** • andoverfabrics.com

Sienna's Garden



Featuring Andover Fabrics new Collection: Sienna by Max & Louise

Quilt designed by Max & Louise

Quilt finished 72" x 80"

This dramatic paper pieced quilt gives you the option to choose from three different border fabrics to make your own version.

Quilt Cutting Directions

Note: Read assembly directions before cutting patches. Borders are cut to exact length required plus $\frac{1}{4}$ " seam allowance. WOF designates the width of fabric from selvedge to selvedge (approximately 42" wide).

Fabric A Cut (3) $8\frac{1}{2}$ " x $80\frac{1}{2}$ " Length of Fabric (LOF) strips.

Fabric B Cut (8) $2\frac{1}{2}$ " x $80\frac{1}{2}$ " LOF strips.

Fabric C Cut (2) $8\frac{1}{2}$ " x $80\frac{1}{2}$ " LOF strips.

Fabric D Cut (20) $2\frac{1}{2}$ " x WOF strips. Sub-cut (320) $2\frac{1}{2}$ " squares.

Fabric E Cut a total of (160) $2\frac{1}{2}$ " x $4\frac{1}{2}$ " strips from the (34) fabrics.

Fabric F Cut (8) $2\frac{1}{2}$ " x WOF strips for the binding.

Backing Cut (2) 88" x WOF strips. Sew the strips together and trim to make (1) 80" x 88" backing.

Making the Quilt

1. Block Assembly

Place (1) $2\frac{1}{2}$ " Fabric D square on the left side of (1) $2\frac{1}{2}$ " x $4\frac{1}{2}$ " Fabric E strip, right sides together (Diagram 1). Sew across the diagonal of the square from the upper right corner to the lower left corner (Diagram 1). Flip open the triangle formed and press. Trim away the excess fabric from behind the triangle, leaving a $\frac{1}{4}$ " seam allowance (Diagram 2).

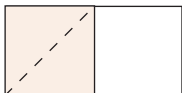


Diagram 1

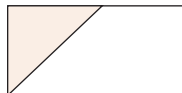


Diagram 2

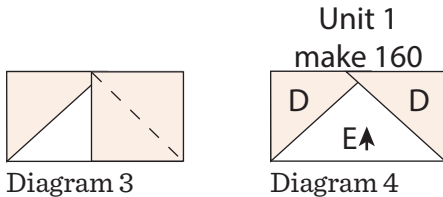
Fabric Requirements

Quilt	Yardage	Fabric
Fabric A columns	2 $\frac{1}{3}$ yard	687-G
Fabric B sashing	2 $\frac{1}{3}$ yard	694-R
Fabric C columns	2 $\frac{1}{3}$ yard	687-L
Fabric D blocks	1 $\frac{1}{2}$ yards	CS-10-Ivory*
Fabric E blocks	$\frac{1}{4}$ yard ea.	688-E
		688-G
		688-P
		688-T
		689-G
		689-L
		689-Y
		690-G
		690-N
		690-T
		691-N
		691-P
		691-T
		692-LE
		692-LG
		693-P
		693-R
		693-T
		694-G
		694-N
		694-P
		694-R
		695-G
		695-N
		695-T
		CS-10-Barn Rose*
		CS-10-Butter*
		CS-10-Cafeaulait*
		CS-10-Cinnamon*
		CS-10-Cocoa*
		CS-10-Faded*
		CS-10-Jade*
		CS-10-Pistachio*
		CS-10-Pressed Flower*
		CS-10-Whisper*
Binding	$\frac{2}{3}$ yard	695-R
Backing	5 yards	689-Y

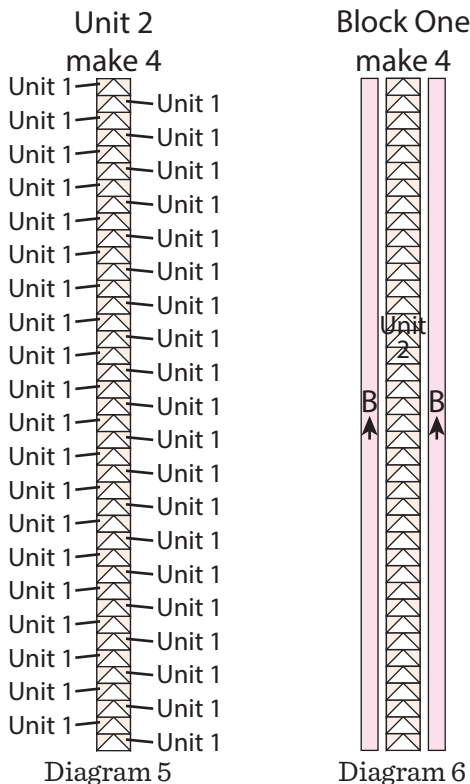
* Century Solids Collection

Sienna's Garden

- Place another 2 1/2" Fabric D square on the right side of the 2 1/2" x 4 1/2" Fabric E strip, right sides together (Diagram 3). Sew across the diagonal of the square from the upper left corner to the lower right corner (Diagram 3). Flip open the triangle formed and press. Trim away the excess fabric from behind the triangle, leaving a 1/4" seam allowance to make (1) Unit 1 strip (Diagram 4).
- Repeat Steps 1-2 to make (160) Unit 1 strips.



- Sew together (40) Unit 1 strips lengthwise to make (1) Unit 2 strip (Diagram 5). Repeat to make (4) Unit 2 strips total.
- Sew (1) 2 1/2" x 80 1/2" Fabric B strip to each side of (1) Unit 2 strip to make (1) Block One strip (Diagram 6). Repeat to make (4) Block One strips total.



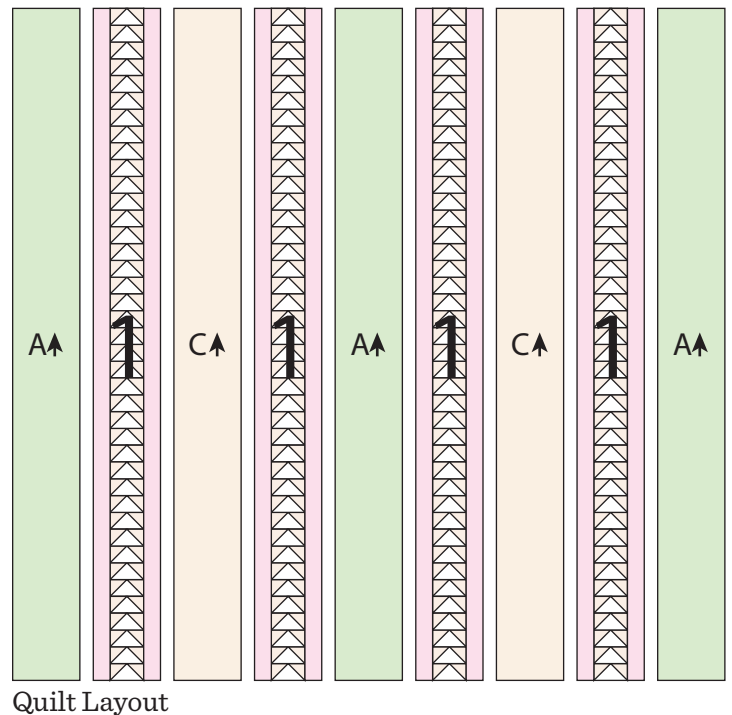
Quilt Top Assembly

(Refer to the Quilt Layout when assembling the quilt top.)

- Sew together (1) 8 1/2" x 80 1/2" Fabric A strip, (1) Block One strip, (1) (1) 8 1/2" x 80 1/2" Fabric C strip, (1) Block One strip, (1) 8 1/2" x 80 1/2" Fabric A strip, (1) Block One strip, (1) 8 1/2" x 80 1/2" Fabric C strip, (1) Block One strip and (1) 8 1/2" x 80 1/2" Fabric A strip, lengthwise and in that order from left to right, to make the quilt top.

Finishing the Quilt

- Layer and quilt as desired.
- Sew the (8) Binding Strips together, end to end with a 45-degree seams, to make the binding. Fold this long strip in half lengthwise with wrong sides together and press.
- Bind as desired.



Sienna

MAX & LOUISE



687-G 2 1/3 yds



687-L 2 1/3 yds



688-E 1/4 yd



688-G 1/4 yd



688-P 1/4 yd



688-T 1/4 yd



689-G 1/4 yd



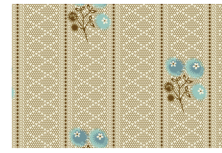
689-L 1/4 yd



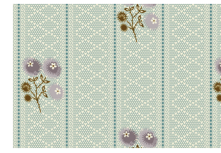
689-Y 5 1/4 yds
(includes backing)



690-G 1/4 yd



690-N 1/4 yd



690-T 1/4 yd



691-N 1/4 yd



691-P 1/4 yd



691-T 1/4 yd



692-LE 1/4 yd



692-LG 1/4 yd



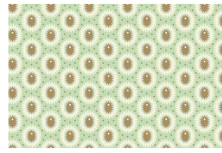
693-P 1/4 yd



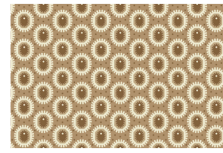
693-R 1/4 yd



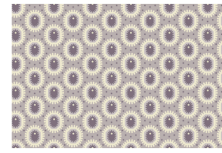
693-T 1/4 yd



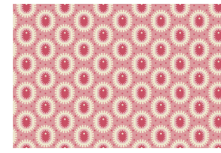
694-G 1/4 yd



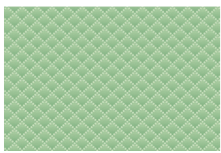
694-N 1/4 yd



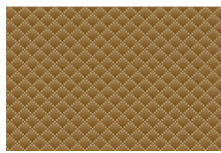
694-P 1/4 yd



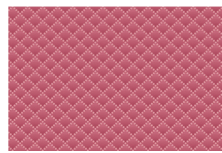
694-R 2 2/3 yds



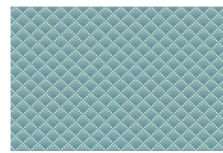
695-G 1/4 yd



695-N 1/4 yd



695-R 2/3 yd
(includes binding)

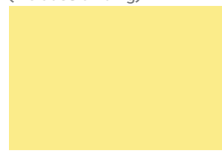


695-T 1/4 yd

Select fabrics from
Century Solids
from
Andover Fabrics



CS-10-Barn Rose
1/4 yd



CS-10-Butter 1/4 yd



CS-10-Cafeaulait
1/4 yd



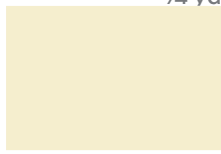
CS-10-Cinnamon
1/4 yd



CS-10-Cocoa 1/4 yd



CS-10-Faded 1/4 yd



CS-10-Ivory 1 1/2 yds



CS-10-Jade 1/4 yd



CS-10-Pistachio
1/4 yd



CS-10-Pressed Flower
1/4 yd



CS-10-Whisper 1/4 yd