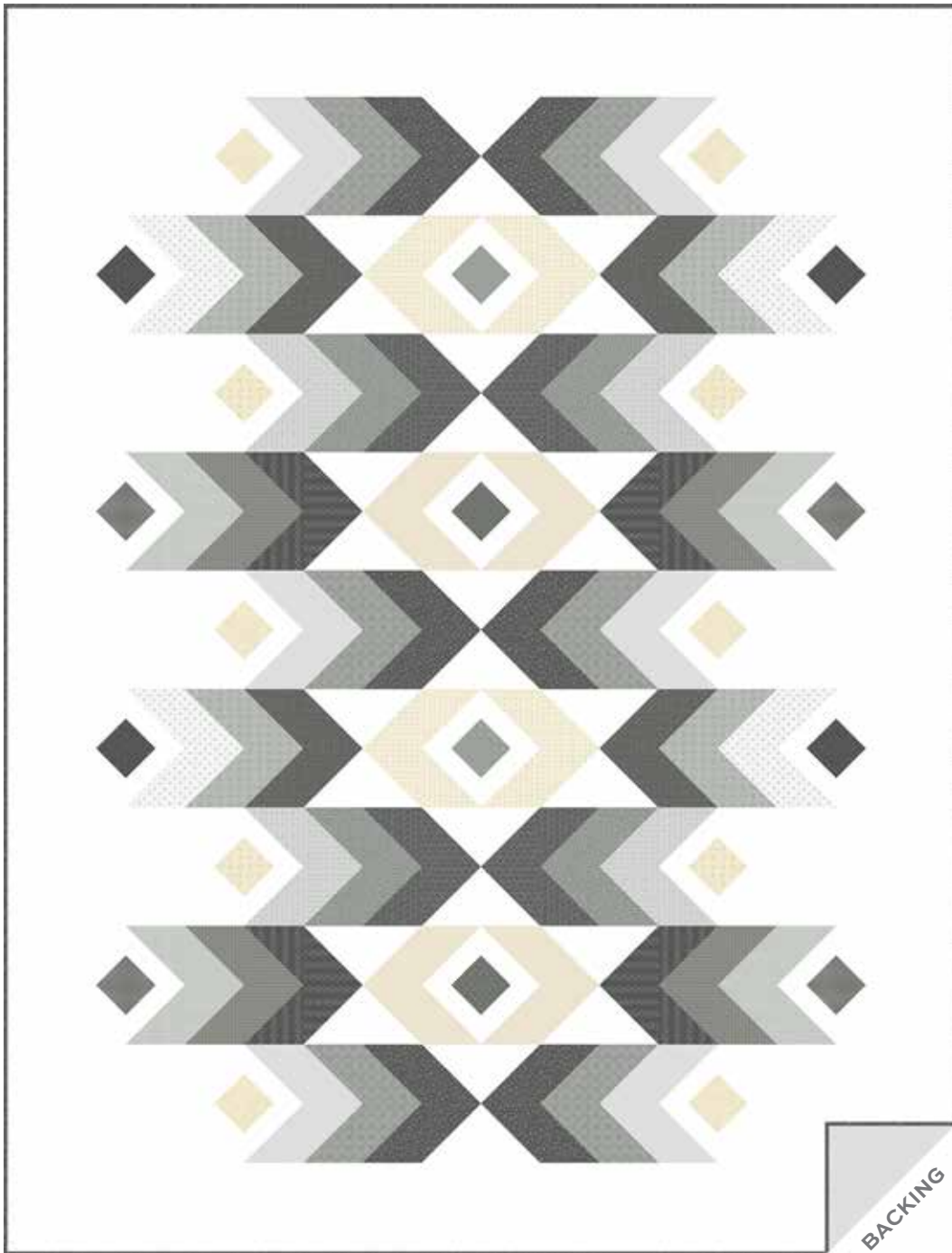


# Dove

ANDOVER FABRICS



Sundown Quilt designed by: **Janet Houts**

Quilt Size: **64" x 84"** • Skill Level: **Intermediate**

andover  [makower.uk](http://makower.uk)

Free Pattern Download Available  
1384 Broadway, 24TH Floor, New York, NY 10018  
Tel. (800) 223-5678 • [andoverfabrics.com](http://andoverfabrics.com)

12/15/22

# Sundown Quilt



Introducing Andover Fabrics new collection: **DOVE** by Andover Fabrics

Quilt designed by Janet Houts

Quilt finishes 64" x 84"

*This contemporary design is reminiscent of Native American tapestries. The drama is enhanced by the careful arrangement of light and dark shades of neutral gray and black prints. Although the piecing is easy, the sewer needs to pay attention to the exact placement of fabrics.*

## Fabric Requirements

		Yardage	Fabric
<b>Fabric A</b>	blocks	fat 1/4	709-C
<b>Fabric B</b>	blocks	fat 1/4	710-C
<b>Fabric C</b>	blocks	fat 1/4	711-C
<b>Fabric D</b>	blocks	1/2 yard	712-C
<b>Fabric E</b>	blocks	fat 1/4	713-C
<b>Fabric F</b>	blocks	fat 1/4	714-C
<b>Fabric G</b>	blocks	fat 1/4	715-C
<b>Fabric H</b>	blocks	fat 1/4	716-C
<b>Fabric I</b>	blocks	fat 1/4	717-C
<b>Fabric J</b>	blocks	fat 1/4	718-C
<b>Fabric K</b>	blocks	1/2 yard	719-C
<b>Fabric L</b>	blocks	fat 1/8	720-C
<b>Fabric M</b>	blocks	1/2 yard	721-C
<b>Fabric N</b>	blocks	fat 1/8	722-C
<b>Fabric O</b>	blocks	fat 1/8	723-C
<b>Fabric P</b>	blocks	fat 1/8	724-C
<b>Fabric Q</b>	blocks	fat 1/8	710-L
<b>Fabric R</b>	blocks	fat 1/4	711-L
<b>Fabric S</b>	blocks	fat 1/8	714-L
<b>Fabric T</b>	blocks	fat 1/4	721-L
<b>Fabric U</b>	set	4 yards	CS-10-Cottonball
<b>Binding</b>		5/8 yard	712-C
<b>Backing</b>		5 1/2 yards	721-C

## Cutting Directions

**Note:** Read assembly directions before cutting patches. All measurements are cut sizes and include 1/4" seam allowances. A fat 1/8 is a 9" x 20"-22" cut of fabric. A fat 1/4 is an 18" x 20"-22" cut. Borders are cut the exact lengths required plus 1/4" seam allowances. WOF designates the width of fabric from selvedge to selvedge (approximately 43" wide).

### Fabric A

Row 4, Block 2: Cut (1) square 9 1/4", cut in half diagonally twice to make 4 triangles  
Row 4, Block 6: Cut (8) squares 4 1/2" for Flying Geese (FG)

### Fabric B

Row 2, Block 6: Cut (8) squares 4 1/2" for FG  
Row 2, Block 6: Cut (4) rectangles 4 1/2" x 8 1/2" for FG

### Fabric C

Row 3, Block 6: Cut (4) rectangles 4 1/2" x 8 1/2" for FG  
Row 3, Block 3: Cut (4) squares 5" for half-square triangles (HST) (Read Step 3 before cutting 5" squares.)

### Fabric D

Row 1, Block 1: Cut (2) squares 9 1/4", cut in half diagonally twice to make 8 triangles (6 needed)  
Row 1, Block 6: Cut (12) squares 4 1/2" for FG

### Fabric E

Row 3, Block 6: Cut (8) squares 4 1/2" for FG  
Row 3, Block 6: Cut (4) rectangles 4 1/2" x 8 1/2" for FG

### Fabric F

Row 4, Block 6: Cut (4) rectangles 4 1/2" x 8 1/2" for FG  
Row 4, Block 4: Cut (4) squares 5" for HST

### Fabric G

Row 3, Block 1: Cut (1) square 9 1/4", cut in half diagonally twice to make 4 triangles  
Row 3, Block 6: Cut (8) squares 4 1/2" for FG

### Fabric H

Row 2, Block 6: Cut (4) rectangles 4 1/2" x 8 1/2" for FG  
Row 2, Block 4: Cut (4) squares 5" for HST

### Fabric I

Row 4, Block 6: Cut (4) rectangles 4 1/2" x 8 1/2" for FG  
Row 4, Block 6: Cut (8) squares 4 1/2" for FG

# Sundown Quilt

## Fabric J

Row 2, Block 2: Cut (1) square 9¼", cut in half diagonally twice to make 4 triangles

Row 2, Block 6: Cut (8) squares 4½" for FG

## Fabric K

Row 1, Block 6: Cut (6) rectangles 4½" x 8½" for FG

Row 1, Block 6: Cut (12) squares 4½" for FG

## Fabric L

Row 4, Block 4: Cut (16) squares 2½"

## Fabric M

Row 1, Block 6: Cut (6) rectangles 4½" x 8½" for FG

Row 1, Block 3: Cut (6) squares 5" for HST

## Fabric N

Row 2, Block 5: Cut (8) squares 2½"

## Fabric O

Row 4, Block 5: Cut (8) squares 2½"

## Fabric P

Row 2, Block 4: Cut (16) squares 2½"

## Fabric Q

Row 3, Block 3: Cut (16) squares 2½"

## Fabric R

Row 2, Block 2: Cut (1) square 9¼", cut in half diagonally twice to make 4 triangles

Row 2, Block 5: Cut (4) squares 5" for HST

## Fabric S

Row 1, Block 3: Cut (24) squares 2½"

## Fabric T

Row 4, Block 2: Cut (1) square 9¼", cut in half diagonally twice to make 4 triangles

Row 4, Block 5: Cut (4) squares 5" for HST

## Fabric U

Cut (2) side borders 4½" x 72½", cut lengthwise

Cut (2) top/bottom borders 6½" x 64½", cut lengthwise

Cut (7) squares 9¼", cut in half diagonally twice to make 28 triangles (26 needed)

Cut (10) squares 8½"

Cut (26) squares 5" for HST

Cut (36) squares 4½"

## Binding

Cut (8) strips 2½" x WOF for binding

## Backing

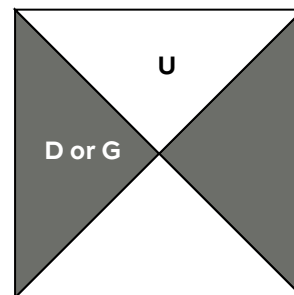
Cut (2) lengths 38" x 96", pieced to fit quilt top with overlap on all sides

## Making the Quilt

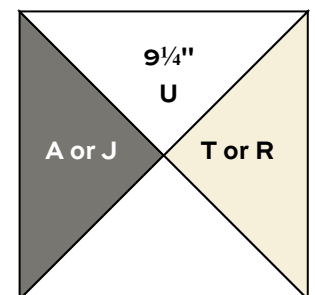
- When making a block, refer not only to the block diagram, but also to the Partial Quilt Piecing diagram to determine what fabrics are combined in each block. Note that the diagram shows only half of each row. See the full Quilt Assembly diagram for the complete rows.

Join 2 Fabric U 9¼" triangles with 2 triangles of colored fabric to make a square. The square should measure 8½" from edge to edge. Make the number of blocks in the fabric combinations shown.

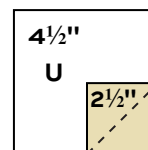
- Blocks 3, 4, and 5 are made with pieced units that use quick-piecing methods. Follow the instructions step by step for success. Units 1 and 2 are made with a stitch-and-flip method. Draw a diagonal line on the back of all the 2½" squares. Align a marked square on one corner of a Fabric U 4½" square (Diagram 1). Stitch along the diagonal line and trim away the excess in the corner. Press the triangle to form a square. Repeat this step to make the number of Unit 1 and Unit 2 shown. The remaining 2½" marked squares are used in Step 4.



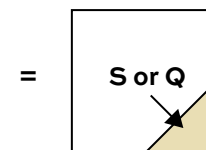
**Block 1**  
Make 3 with D & U  
Make 2 with G & U



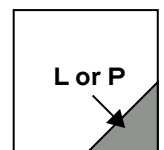
**Block 2**  
Make 4 with J, R, & U  
Make 4 with A, T, & U



**Diagram 1**



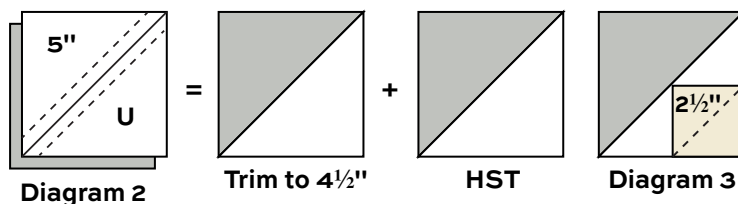
**Unit 1**  
Make 12 with S  
Make 8 with Q



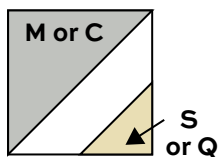
**Unit 2**  
Make 8 with L  
Make 8 with P

# Sundown Quilt

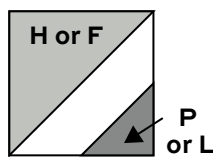
3. Blocks 3, 4, and 5 use HST units. Squares cut 5" will be trimmed after stitching. Cut the squares 4 7/8" if you do not wish to trim later. Draw a diagonal line on the wrong side of the 5" Fabric U squares. With right sides together, position the marked square on top of a colored 5" square. Stitch 1/4" on each side of the diagonal line (Diagram 2). Cut apart on the drawn line. Press the seam allowance toward the darker fabric. Stitch all the 5" squares like this to make HST. Trim HST to 4 1/2" square if needed.



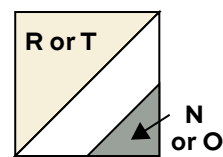
4. To change the HST from Step 3 to the units needed for Blocks 3, 4, and 5, a square is stitched to a corner of each HST. Referring to Diagram 3, position a leftover marked 2 1/2" square on the corner of an HST, aligning the edges with the Fabric U corner. Stitch along the marked line. Trim the excess fabric in the corner. Refer to Units 3, 4, and 5 diagrams to make the number of units in the fabric combinations shown. Refer to the block diagrams and the Partial Quilt Piecing diagram to arrange and join the units into Blocks 3, 4, and 5. Make the number of blocks shown.



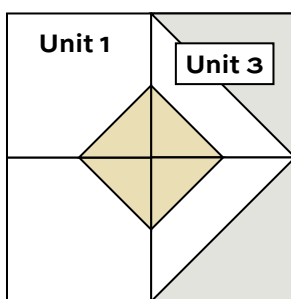
**Unit 3**  
Make 12 with M & S & U  
Make 8 with C & Q & U



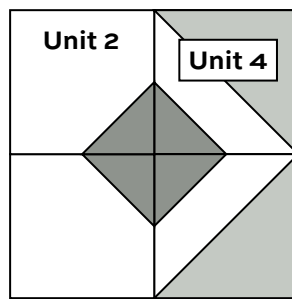
**Unit 4**  
Make 8 with H & P & U  
Make 8 with F & L & U



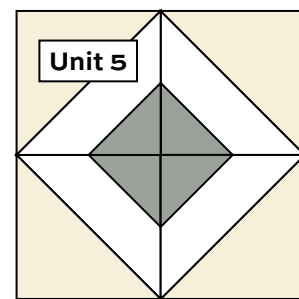
**Unit 5**  
Make 8 with N & R & U  
Make 8 with O & T & U



**Block 3 - Make 10**

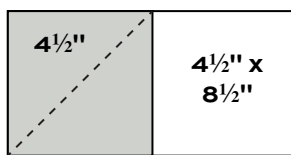


**Block 4 - Make 8**

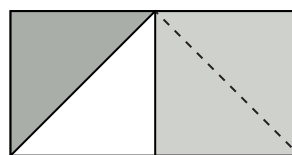


**Block 5 - Make 4**

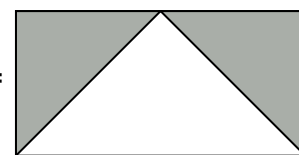
5. Fast Flying Geese are used in Block 6 in this quilt. Refer to all Block 6 in the Partial Quilt Piecing diagram to choose fabric combinations. Note that some fabrics are used in the same block (Fabric K squares and rectangles are used together in Block 6 in Row 1), while other fabrics are used in adjacent blocks. For instance, Fabric M in Row 1 is used in both Block 6 and Block 3. Be careful when making the Flying Geese that you do not inadvertently join the wrong fabrics. We suggest that you draw a line through each Flying Geese on the diagram as you make it for each Block 6.



**Diagram 4**



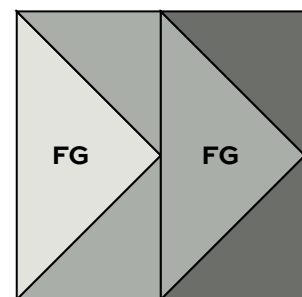
**Diagram 5**



**Flying Geese (FG)**  
Make 36

Draw a diagonal line on the wrong side of all 4 1/2" squares. Position a marked square as shown on one end of a 4 1/2" x 8 1/2" rectangle (Diagram 4). Stitch on the marked diagonal line. Cut away the excess fabric. Press the corner up. Repeat this step on the opposite end of the rectangle (Diagram 5). Make 36 Flying Geese total, all to be used in Block 6.

6. Referring to the Partial Quilt Piecing diagram, join 2 Flying Geese to make each Block 6. It is important to join the correct Flying Geese so that the overall design is maintained. Note that each Row 1 requires 2 Block 6 (with M, K, and D patches). Since there are 3 Row 1 in the quilt, you will be making 6 Block 6 alike for the 3 Row 1.



**Block 6 - Make 18**

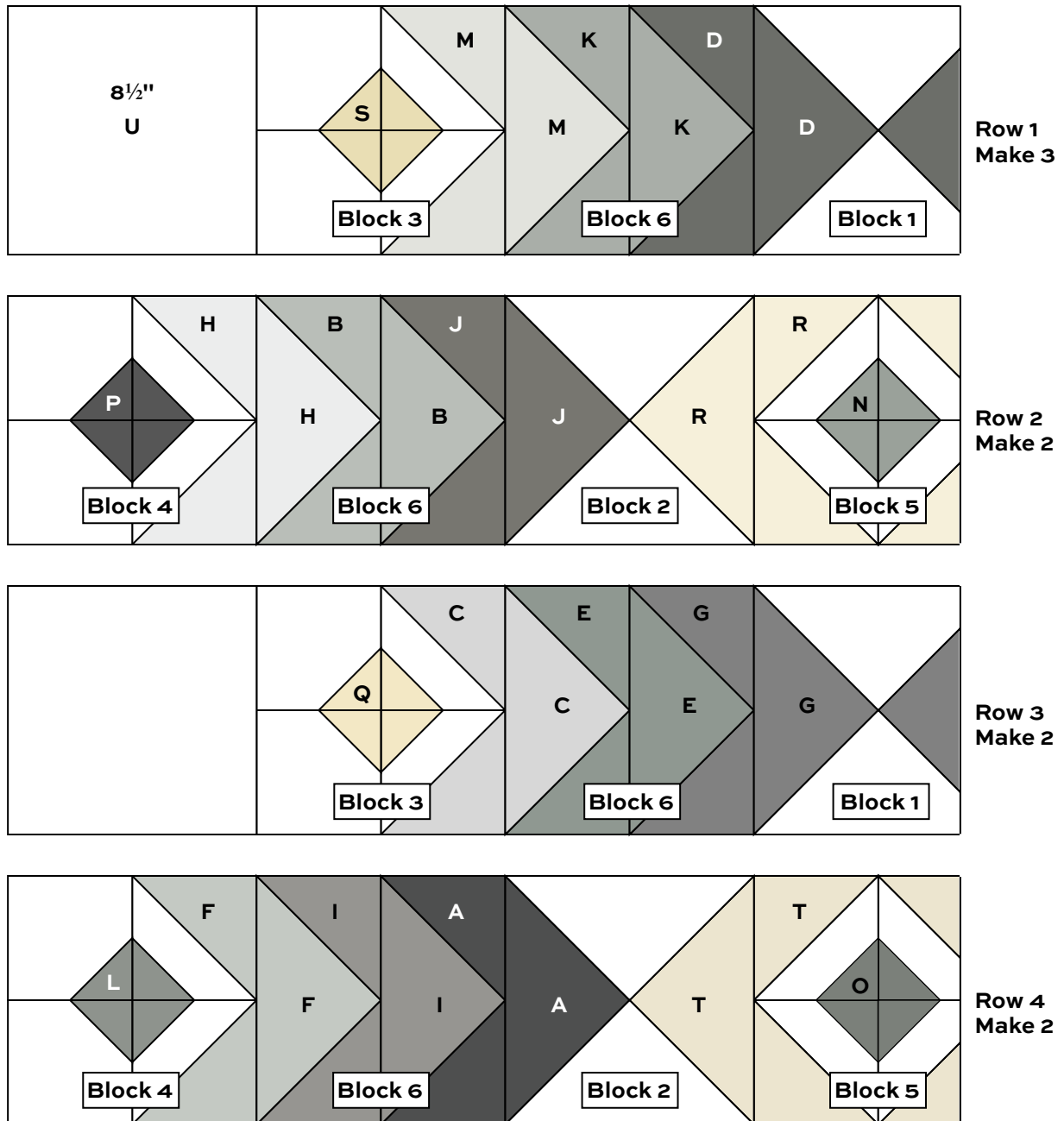
# Sundown Quilt

7. Refer to the Partial Quilt Piecing diagram. Using a design wall or large flat surface, arrange the blocks and Fabric U  $8\frac{1}{2}$ " squares in 4 horizontal rows of 7 blocks each. Stand back or look through the wrong end of binoculars to be certain that the blocks are rotated as needed. Once you are satisfied, join the blocks into the rows. Repeat to make 3 Row 1 all alike, 2 Row 2, 2 Row 3, and 2 Row 4. Finally, join the 9 rows to make the quilt, referring to the Quilt Assembly Diagram.

8. Sew the long borders to the sides of the quilt, and sew shorter borders to the top and bottom.

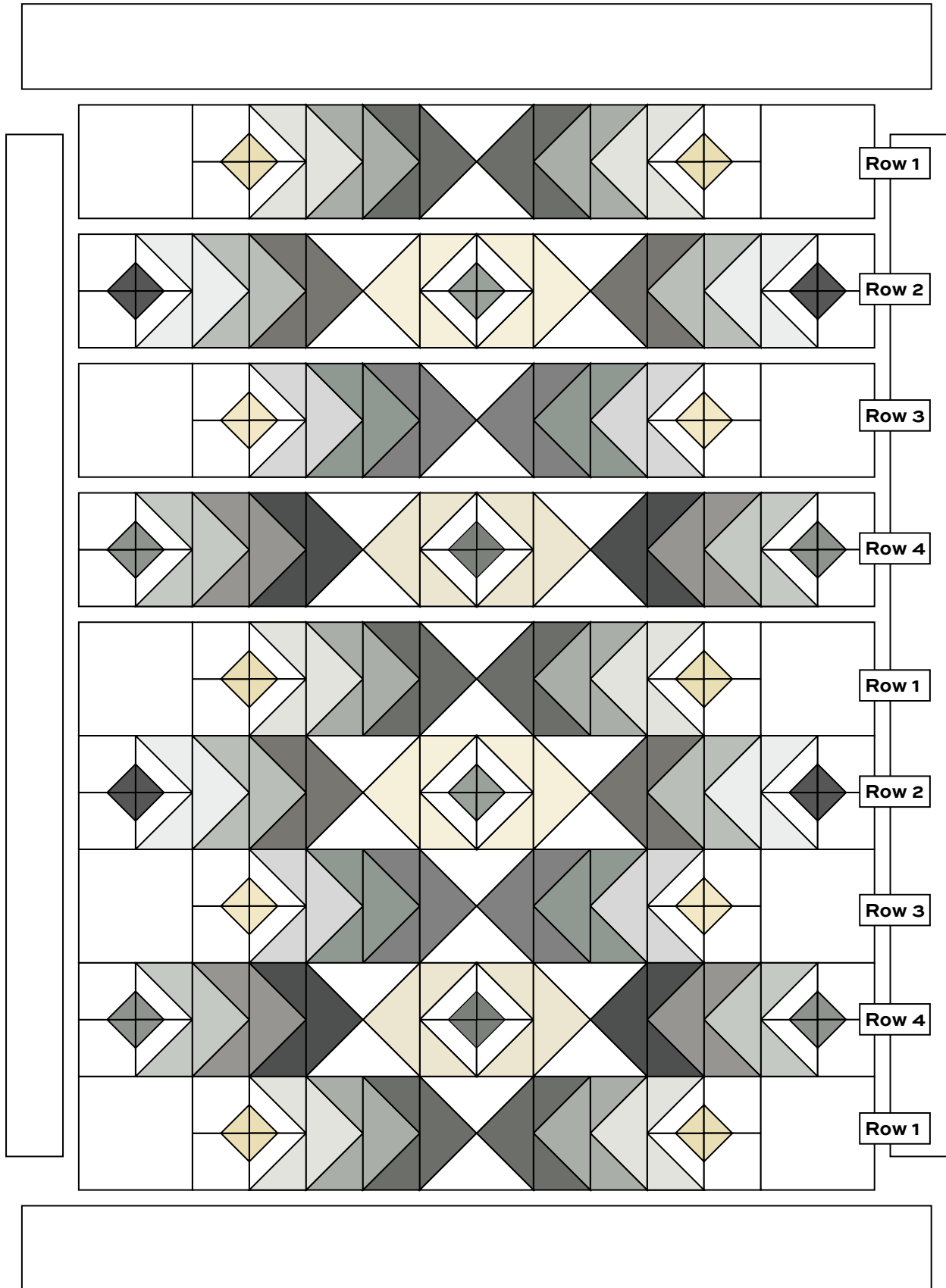
## Finishing the Quilt

9. Layer the quilt with batting and backing and baste. Quilt in the ditch around borders and patches. Or, quilt an overall pattern. Bind to finish the quilt.



Partial Quilt Piecing

# Sundown Quilt

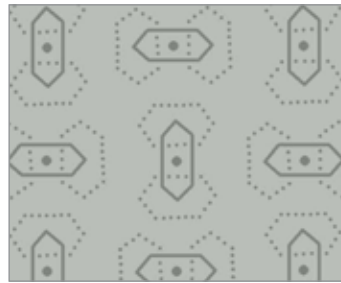


## Quilt Assembly

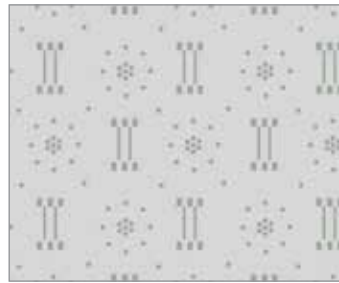
# Dove ANDOVER FABRICS



709-C



710-C



711-C



712-C



713-C



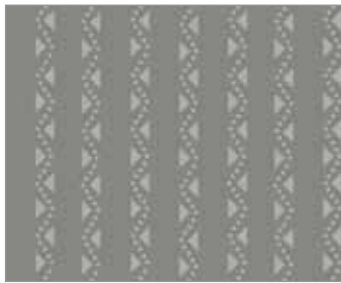
714-C



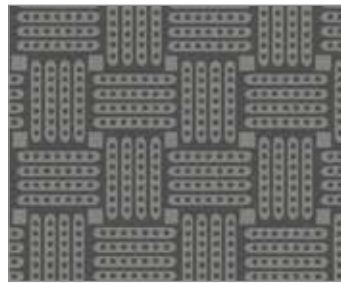
715-C



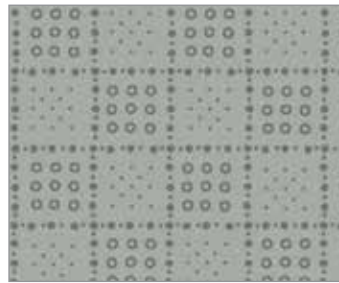
716-C



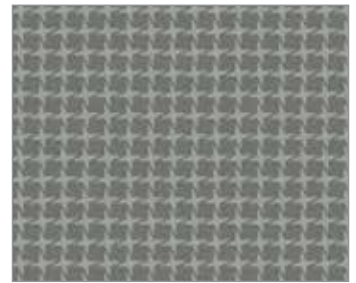
717-C



718-C



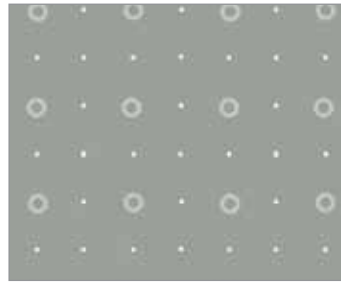
719-C



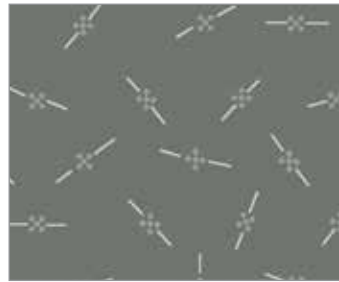
720-C



721-C



722-C



723-C



724-C

Additional fabric from **Gossamer** by Andover Fabrics



710-L



711-L

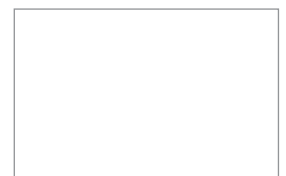


714-L



721-L

Additional fabric from **Century Solids** by Andover Fabrics



CS-10-Cottonball

All fabrics are used in quilt pattern. Fabrics shown are 100% of actual size.