


Autumn Waltz Panel with Borders Pattern

by

 *Material Girlfriends*



42" x 62"

Autumn Waltz Panel with Borders



Material Girlfriends

Finished size 42" x 62"

Read all instructions before starting. All seams are 1/4".

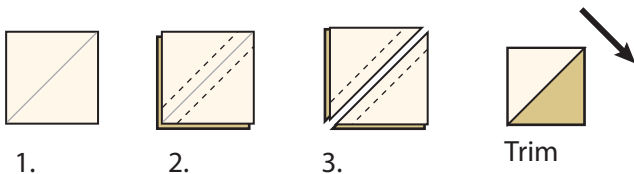
1. Trim Naughty Elves Panel to measure 22 1/2" x 42 1/2".
2. Cut four 1 1/2" x WOF (Width Of Fabric) strips of R590570D **Blue Wishes**
Sub-cut into two 1 1/2" x 42 1/2" strips and two 1 1/2" x 24 1/2" strips.
 - A. Pin and sew the 1 1/2" x 42 1/2" strips of **Blue Wishes** to the left and right sides of the panel. Press seams towards the inner border.
 - B. Pin and sew the 1 1/2" x 24 1/2" strips of **Blue Wishes** to the top and bottom of the panel. Press seams towards the inner border.

Pieced Border

Cut one 4 1/2" x WOF strips of R590570D-**Cream Wishes**.
Sub-cut into one 4 1/2" x 24 1/2" strip and one 4 1/2" x 12 1/2" strip. Set aside.

Pinwheel Block

- Cut three 3" x WOF strips of R590570D-**Cream Wishes**.
Sub-cut into thirty-two 3" squares.
- Cut two 3" x WOF strips of R590568D-**Beige Leaves**
Sub-cut into sixteen 3" squares.
- Cut two 3" x WOF strips of R590568D-**Coffee Leaves**
Sub-cut into sixteen 3" squares.
1. To create the **Half Square Triangles (HSTs)**, draw a diagonal line across the wrong side of a 3" **Cream Wishes** square.
 2. Pair with a 3" **Beige Leaves** square and with right sides together, sew a 1/4" seam on each side of the drawn line.
 3. Cut on the drawn line to create two **HSTs**. Press the seam toward the **Beige Leaves**. Repeat to make thirty-two **HSTs**.
TRIM your **Half Square Triangles** by lining up the seam with the 45° line of your ruler. Trim to 2 1/2" square.



4. Arrange the **HSTs** like diagram 4.
5. Sew the top two squares together and sew the bottom two squares together. Press seams as the arrows indicate.

Autumn Waltz Panel with Borders

Fabric Requirements

R590564P-Tan One Autumn Waltz Panel, 2/3 yard

 1 1/4 yards

R590565D-Brown Music

 3/8 yard

R590566D-Blue Diamonds

 1/8 yard

R590566D-Brown Diamonds

 1/8 yard

R590566D-Green Diamonds

 1/8 yard

R590567D-Ginger Mandala

 1/8 yard

R590567D-Rust Mandala

 1/4 yard

R590568D-Beige Leaves

 1/4 yard

R590568D-Coffee Leaves

 1/8 yard


R590568D-Green Leaves

 1/8 yard

R590569D-Purple Volume

 1/8 yard

R590569D-Red Volume

 1 yard includes binding

R590570D-Blue Wishes

 1 1/4 yards

R590570D-Cream Wishes

 3 yards Backing

R590568D-Orange Leaves

© 2022 Lisa Norton Designs LLC, dba Material Girlfriends. All Rights Reserved. Finished item for personal use only. A basic knowledge of quilting is assumed, therefore detailed instructions are not included. Material Girlfriends can not be held responsible for variants in workmanship and materials.
www.materialgirlfriends.com
materialgirlfriend@yahoo.com

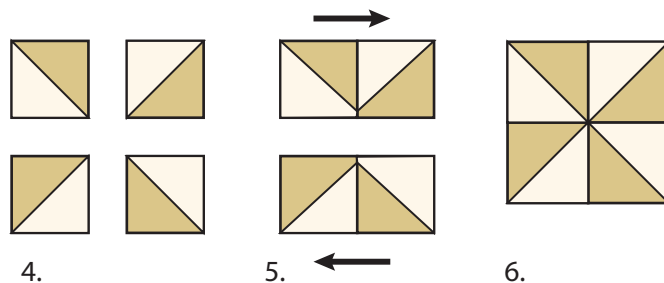
MARCUS
Fabrics.

MarcusFabrics.com
inquiry@marcusfabrics.com
(212) 354-8700
483 Broadway 4th Floor
New York, NY 10013

6. Sew the top half and the bottom half together. Press.
Repeat to make a total of three Pinwheel blocks.
Block should measure 4 1/2" square.

Make 8 Pinwheel blocks using Cream Wishes and Beige Leaves.

Make 8 Pinwheel blocks using Cream Wishes and Coffee Leaves.



Leaf Blocks

Cutting Instructions:

One 2 1/2" x WOF strip of R590570D-Cream Wishes, sub-cut into sixteen 2 1/2" squares for HST

Eight 1 7/8" squares of R590570D-Cream Wishes

Sixteen 1 1/2" squares of R590570D-Cream Wishes for stem unit

Eight 1 7/8" squares of R590566D-Brown Diamonds for stem unit

Two 2 1/2" squares of R590568D-Green Leaves for HST

Three 1 7/8" squares of R590568D-Green Leaves

Two 2 1/2" squares of R590566D-Green Diamonds for HST

Three 1 7/8" squares of R590566D-Green Diamonds

Two 2 1/2" squares of R590559D-Red Volume for HST

Three 1 7/8" squares of R590559D-Red Volume

Two 2 1/2" squares of R590559D-Purple Volume for HST

Three 1 7/8" squares of R590559D-Purple Volume

Two 2 1/2" squares of R590567D-Rust Mandela for HST

Three 1 7/8" squares of R590567D-Rust Mandela

Two 2 1/2" squares of R590567D-Ginger Mandela for HST

Three 1 7/8" squares of R590567D-Ginger Mandela Leaves

Two 2 1/2" squares of R590570D-Blue Wishes for HST

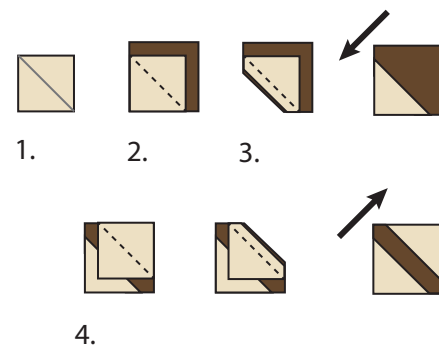
Three 1 7/8" squares of R590570D-Blue Wishes

Two 2 1/2" squares of R590566D-Blue Diamonds for HST

Three 1 7/8" squares of R590570D-Blue Diamonds

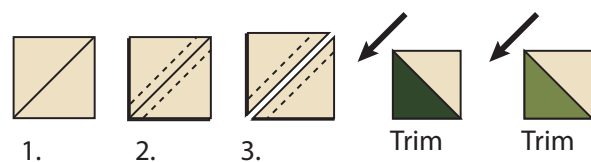
Stem Unit

1. To create the stem unit, draw a diagonal line across the wrong side of two 1 1/2" Cream Wishes squares.
2. With right sides together, position one 1 1/2" Cream Wishes square in the corner of the Brown Diamonds square. Sew on the drawn line.
3. Trim 1/4" from the seam and press seam as the arrow indicates.
4. Repeat for the opposite corner. Unit should measure 1 7/8" square. Make 8 stem units.

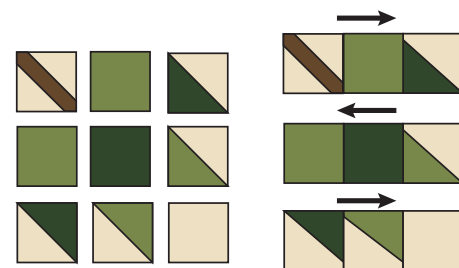


Leaf Block HSTs

1. To create the Half Square Triangles (HSTs), draw a diagonal line across the wrong side of a 2 1/2" Cream Wishes square.
2. Pair with a 2 1/2" Green Leaves square and with right sides together, sew a 1/4" seam on each side of the drawn line.
3. Cut on the drawn line to create two HSTs. Press the seam toward the Green Leaves. Repeat to make four HSTs. TRIM your Half Square Triangles by lining up the seam with the 45° line of your ruler. **Trim to 1 7/8" square.**

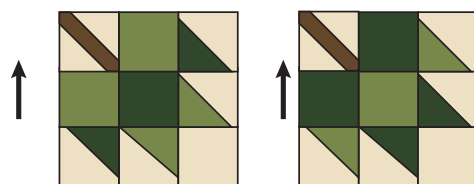


4. Follow steps 1 through 3 above but substitute the **Green Leaves** for the **Green Diamonds** fabric.
5. Arrange the Stem Unit, **HSTs** and the **Green Leaves**, **Green Diamonds**, and **Cream Wishes** $1\frac{7}{8}$ " squares like the diagrams for **Block A** and **Block B**.
6. Sew the top three squares together and sew the middle three squares together. Sew the bottom three squares together. Press as the arrows indicate.
7. Nest seams, pin, and sew the top row to the middle row and the middle row to the bottom row. Press as the arrow indicates. Blocks should measure $4\frac{1}{2}$ " square.
8. Repeat the steps to make
 Block C and Block D with **Red Volume** and **Purple Volume**
 Block E and Block F with **Rust Mandela** and **Ginger Mandela**
 Block G and Block H with **Blue Diamonds** and **Blue Wishes**



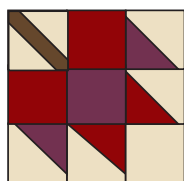
5.

6.

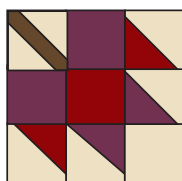


7. Block A

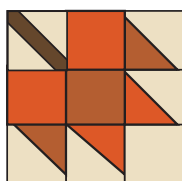
Block B



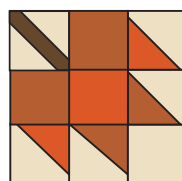
Block C



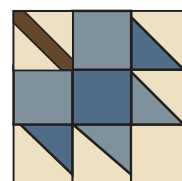
Block D



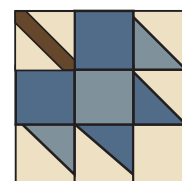
Block E



Block F



Block G



Block H

Paper-Pieced Pumpkin Blocks

1. Make five copies of the pattern at 100% size. Using your favorite paper-piecing technique, construct the Pumpkin Block.
2. When finished paper piecing, trim on the OUTSIDE line. Inside line is the $\frac{1}{4}$ " seam line. Align, pin, and sew the top and bottom together. Unfinished size (outside line) should measure $4\frac{1}{2}$ " square. Remove paper. Make five Pumpkin Blocks.

Cutting Instructions for Five Paper-Pieced Pumpkins

Background - Cream Wishes

Twenty $1\frac{1}{2}$ " x 2" rectangles for Pieces A2, A3, A4, and A5

Five $1\frac{1}{2}$ " squares for Piece B1

Ten 3" x 2" rectangles for Pieces B3, B4

Pumpkin - Piece A1

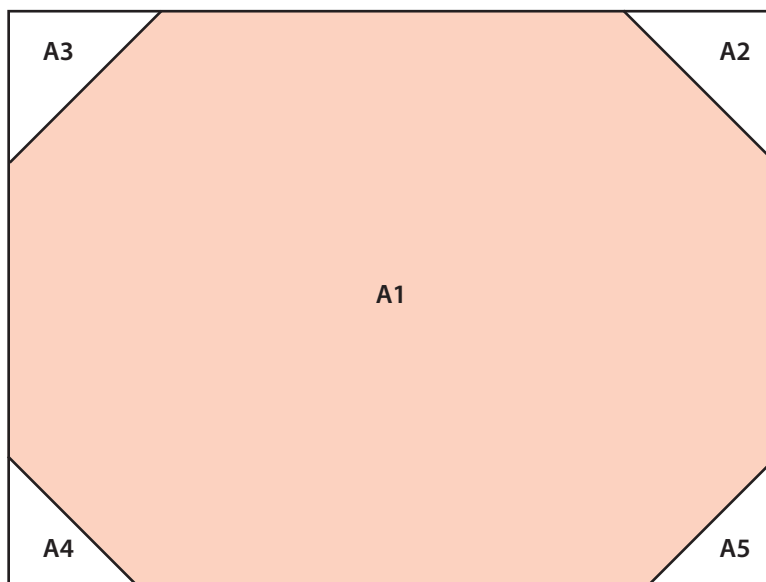
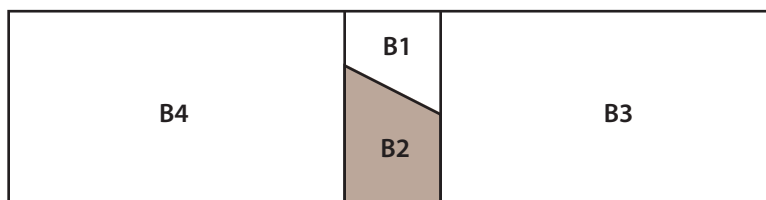
Two 5" x 4" rectangles **Ginger Mandela**

Two 5" x 4" rectangles **Rust Mandela**

One 5" x 4" rectangle **Coffee Leaves**

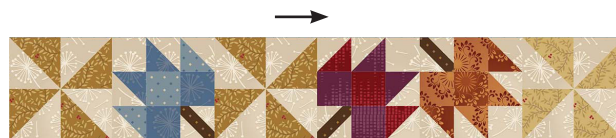
Stem - Brown Diamonds

Piece B2 Five $1\frac{3}{4}$ " squares

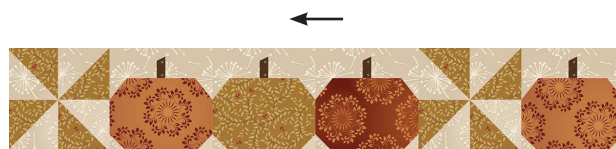


Assemble the Quilt Top

1. Arrange the blocks like the diagram. Align, pin, and sew the blocks together. Press the seams as indicated by the arrow. Row should measure $24\frac{1}{2}" \times 4\frac{1}{2}"$. Pin and sew the row to the top of the panel unit. Press seam toward the inner border.
2. Arrange the blocks like the diagram. Align, pin, and sew the blocks together. Press the seams as indicated by the arrow. Row should measure $24\frac{1}{2}" \times 4\frac{1}{2}"$. Pin and sew the row to the bottom of the panel unit. Press seam toward the inner border.
3. Arrange the blocks and the $4\frac{1}{2}" \times 12\frac{1}{2}"$ rectangle like the diagram. Align, pin, and sew the blocks and rectangle together. Press the seams as indicated by the arrow. Row should measure $4\frac{1}{2}" \times 52\frac{1}{2}"$. Align, pin, and sew the row to the Left side of the panel unit. Press seam toward the inner border.
4. Arrange the blocks and the $4\frac{1}{2}" \times 24\frac{1}{2}"$ rectangle like the diagram. Align, pin, and sew the blocks and rectangle together. Press the seams as indicated by the arrow. Row should measure $4\frac{1}{2}" \times 52\frac{1}{2}"$. Pin and sew the row to the Right side of the panel unit. Press seam toward the inner border. Quilt top should measure $32\frac{1}{2}" \times 52\frac{1}{2}"$.



1.



2.

3.



4.



Borders

Cutting Instructions:

Cut six 1 1/2" x WOF of R590566D-**Blue Diamonds** for accent border

Cut six 4 1/2" x WOF of R590565D-**Brown Music** for outer border

1. Trim selvages from the strips. Cut two of the **Blue Diamonds** strips to 1 1/2" x 34 1/2". Sew two other **Blue Diamonds** strips at the short ends and trim to 1 1/2" x 52 1/2" with the seam at the center. Make two.
2. Align, pin, and sew the **Blue Diamonds** 1 1/2" x 52 1/2" strips to the left and right sides of the quilt top. Press seams toward the accent strips.
3. Align, pin, and sew the **Blue Diamonds** 1 1/2" x 34 1/2" strips to the top and bottom of the quilt top. Press seams toward the accent strips.
4. Cut two of the **Brown Music** strips to 4 1/2" x 42 1/2". Sew two other **Brown Music** strips at the short ends and trim to 4 1/2" x 54 1/2" with the seam at the center. Make two.
5. Align, pin, and sew the **Brown Music** 4 1/2" x 54 1/2" strips to the left and right sides of the quilt top. Press seams toward the outer border.
6. Align, pin, and sew the **Brown Music** 4 1/2" x 34 1/2" strips to the top and bottom of the quilt top. Press seams toward the outer border.
7. Sandwich your quilt top with batting and **Orange Leaves** as your backing. Quilt as desired. Bind with **Blue Wishes**.

Wow! Great job!

