

STAND TALL

by Janet Rae Nesbitt

ONE SISTER



Free Project Sheet
NOT FOR RESALE

Quilt designed by Denise Russell.



Quilt 1

Quilt size: 41" x 62"
Skill Level: Beginner

 Henry Glass & Co., Inc.



facebook

49 West 37th Street
New York, NY 10018
Tel: 212-686-5194 - Fax: 212-532-3525
Toll Free: 800-294-9495
www.henryglassfabrics.com
Please check our website for pattern updates
before starting this project.

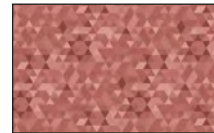
STAND TALL - Fabrics in the Collection



3024-33 Triangle
Texture - Yellow



3024-44 Triangle
Texture - Cream

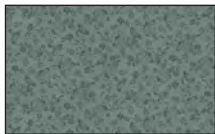


3024-83 Triangle
Texture - Lt. Red



3025-33 Bird
Stamp - Yellow

3031P-13 Sunflowers
Panel 24" - Gray



3025-77 Bird
Stamp - Blue



3025-98 Bird Stamp
Gray Taupe



3026-35 Textured
Tile - Gold



3026-38 Textured
Tile - Taupe



3026-44 Textured
Tile - White Wash



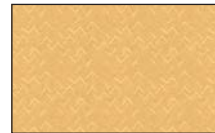
3027-33 X Texture
Lt. Yellow



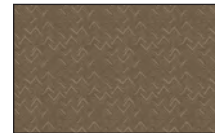
3027-38 X Texture
Taupe



3027-66 X Texture
Green



3028-33 Broken
Chevron - Yellow



3028-38 Broken
Chevron - Brown



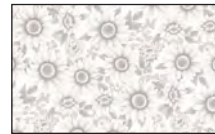
3028-66 Broken
Chevron - Green



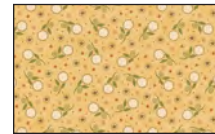
3029-13 Sunflower
Allover - Gray



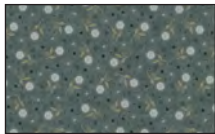
3029-33 Sunflower
Allover - Yellow



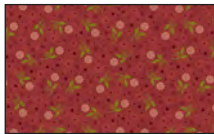
3029-44 Sunflower
Allover - White Wash



3030-33 Sunflower
Mini - Lt. Yellow



3030-77 Sunflower
Mini - Blue



3030-88 Sunflower
Mini - Red

STAND TALL - Quilt 1

Page 1

Materials

Yardages and cutting instructions are based on 42" of usable fabric width.

One 3031P-13 Sunflower Panel 24" x 44" - Gray
1/4 yard 3024-44 Triangle Texture - Cream
1/4 yard 3024-83 Triangle Texture - Lt. Red
1/3 yard 3026-44 Textured Tile - White Wash
3/8 yard 3027-38 X Texture - Taupe
1/2 yard 3029-33 Sunflower Allover - Yellow
1/2 yard 3030-77 Sunflower Mini - Blue
2/3 yard 3030-88 Sunflower Mini - Red
2-7/8 yards 3029-13 Sunflower Allover - Gray
for backing

Cut Fabrics

Note: All strips are cut across the width of the fabric (WOF) from selvage to selvage unless otherwise indicated.

From 3031P-13 Sunflower Panel 24" x 44" – Gray:

*Trim panel to 21-1/2" x 42-1/2".

From 3024-44 Triangle Texture – Cream, cut:

*Four 1-1/2" x WOF strips for border 1.

From 3024-83 Triangle Texture - Lt. Red, cut:

*Four 1-1/2" x WOF strips for border 3.

From 3026-44 Textured Tile - White Wash, cut:

*Five 1-1/2" x WOF strips for border 7.

From 3027-38 X Texture – Taupe, cut:

*Nine 1-1/4" x WOF strips for borders 4 and 6.

From 3029-33 Sunflower Allover – Yellow, cut:

*Five 2-1/2" x WOF strips for border 5.

From 3030-77 Sunflower Mini – Blue, cut:

*Five 3" x WOF strips for border 8.

From 3030-88 Sunflower Mini – Red, cut:

*Four 1-1/2" x WOF strips for border 2.

*Six 2-1/2" x WOF strips for binding.

Assemble Quilt Top

1. For border 1, trim two 1-1/2" 3024-44 Triangle Texture – Cream strips to 42-1/2" and sew one strip to each side of the 3031P-13 Sunflower – Gray panel. Press the seams toward the border. Trim two more 1-1/2" Cream strips to 23-1/2" and sew one to the top and one to the bottom of the panel. Press as before.
2. For border 2, sew four 1-1/2" 3030-88 Sunflower Mini – Red border strips together end to end using diagonal seams. Measure the vertical length of the quilt top through the center and cut two border strips that length. Sew one strip to each side of the quilt top. Measure the width of the quilt top through the center. Cut two border strips that length and sew one to the top and one to the bottom. Press the seams toward the borders.
3. Repeat Step 2 with four 1-1/2" 3024-83 Triangle Texture - Lt. Red strips to make and add border 3.
4. Repeat Step 2 with four 1-1/4" 3027-38 X Texture – Taupe strips to make and add border 4.
5. Repeat Step 2 with five 2-1/2" 3029-33 Sunflower Allover – Yellow strips to make and add border 5.
6. Repeat Step 2 with five 1-1/4" 3027-38 X Texture – Taupe strips to make and add border 6.
7. Repeat Step 2 with five 1-1/2" 3026-44 Textured Tile - White Wash strips to make and add border 7.
8. Repeat Step 2 with five 3" 3030-77 Sunflower Mini – Blue strips to make and add border 8.

Finishing

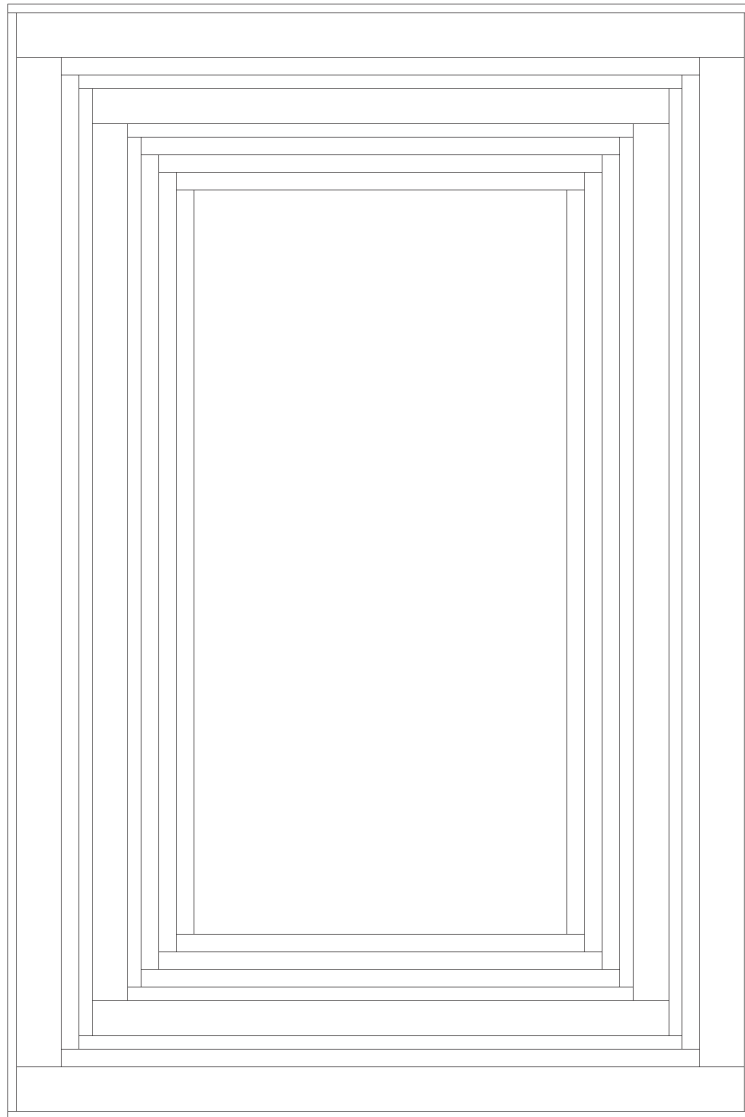
9. Create a quilt sandwich with the batting between the quilt top and the backing. Pin or

STAND TALL - Quilt 1

Page 2

baste layers together, mark the quilting design, and quilt by hand or machine. When quilting is complete, remove pins or basting, and trim batting and backing even with raw edges of the quilt top.

10. Join the six 2-1/2" 3030-88 Sunflower Mini – Red binding strips together end to end using a diagonal seam to make one long strip. With wrong sides together, fold in half lengthwise and press. Sew binding to the edges of the quilt, mitering corners, and overlapping ends. Fold binding to the back of the quilt and stitch it in place by hand to finish.



Quilt Diagram

©2022 Henry Glass & Co. Inc.

Every effort has been made to ensure that all projects are error free. All the information is presented in good faith; however, no warranty can be given nor results guaranteed as we have no control over the execution of instructions. Therefore, we assume no responsibility for the use of this information or damages that may occur as a result. When errors are brought to our attention, we make every effort to correct and post a revision as soon as possible. Please make sure to check www.henryglassfabrics.com for pattern updates prior to starting the project. We also recommend that you test the project prior to cutting for kits. Finally, all free projects are intended to remain free to you and are not for resale.