

Natale

GIUCY GIUCE

a
100
years



Natale Quilt designed by: **Giucy Giuce**

Quilt Size: **66½" x 86"** • Skill Level: **Intermediate**

andover

•
•
• makower uk
•

Free Pattern Download Available
1384 Broadway, 24TH Floor, New York, NY 10018
Tel. (800) 223-5678 • andoverfabrics.com

9/15/22

Natale Quilt

Introducing Andover Fabrics new collection: **NATALE** by Giucy Giuce
Quilt designed by Giucy Giuce

Quilt finishes 66½" x 86"

Just in time to celebrate the season, this contemporary quilt has paper-foundation trees made with an interesting array of floral, geometric, and striped prints. The color-wheel order of the trees adds an interesting diagonal element.

Fabric Requirements

		Yardage	Fabric	
Fabric A	backgrd.	6 yards	676-L	
Fabric B	trunks	fat ¼	9248-N3	
Fat ⅛s	trees	fat ⅛ each		
9872-G	9873-L	9874-T	9879-G1	9879-P
9881-G	9881-T	673-C	673-LG	673-LY
675-T	676-G	676-R		
Fat ¼s	blocks	fat ¼ each		
9873-G	9873-R	9874-G1	9874-R	9881-O
674-R	674-T	675-LC	675-Y	
Binding		⅝ yard		674-LR
Backing		5½ yards		9872-G

Cutting Directions

Note: Read assembly directions before cutting patches. All measurements are cut sizes and include ¼" seam allowances. A fat ¼ is an 18" x 20"-22" cut. WOF designates the width of fabric from selvedge to selvedge (approximately 43" wide).

Fabric A

Cut (8) sashes 2½" x 67"
Cut (6) rectangles 7½" x 10½"
Cut (11) rectangles 6" x 10½"
Cut (12) rectangles 3½" x 10½"
Cut PFP background patches #2, 3, 5, and 6 as needed for each tree

Fabric B

Cut fabric for PFP patch #1 as needed for each tree trunk

Fat ⅛s and Fat ¼s

Cut fabric for PFP patch #4 as needed for each tree

Binding

Cut (8) strips 2½" x WOF for binding

Backing

Cut (2) lengths 39" x 96", pieced to fit quilt top with overlap on all sides

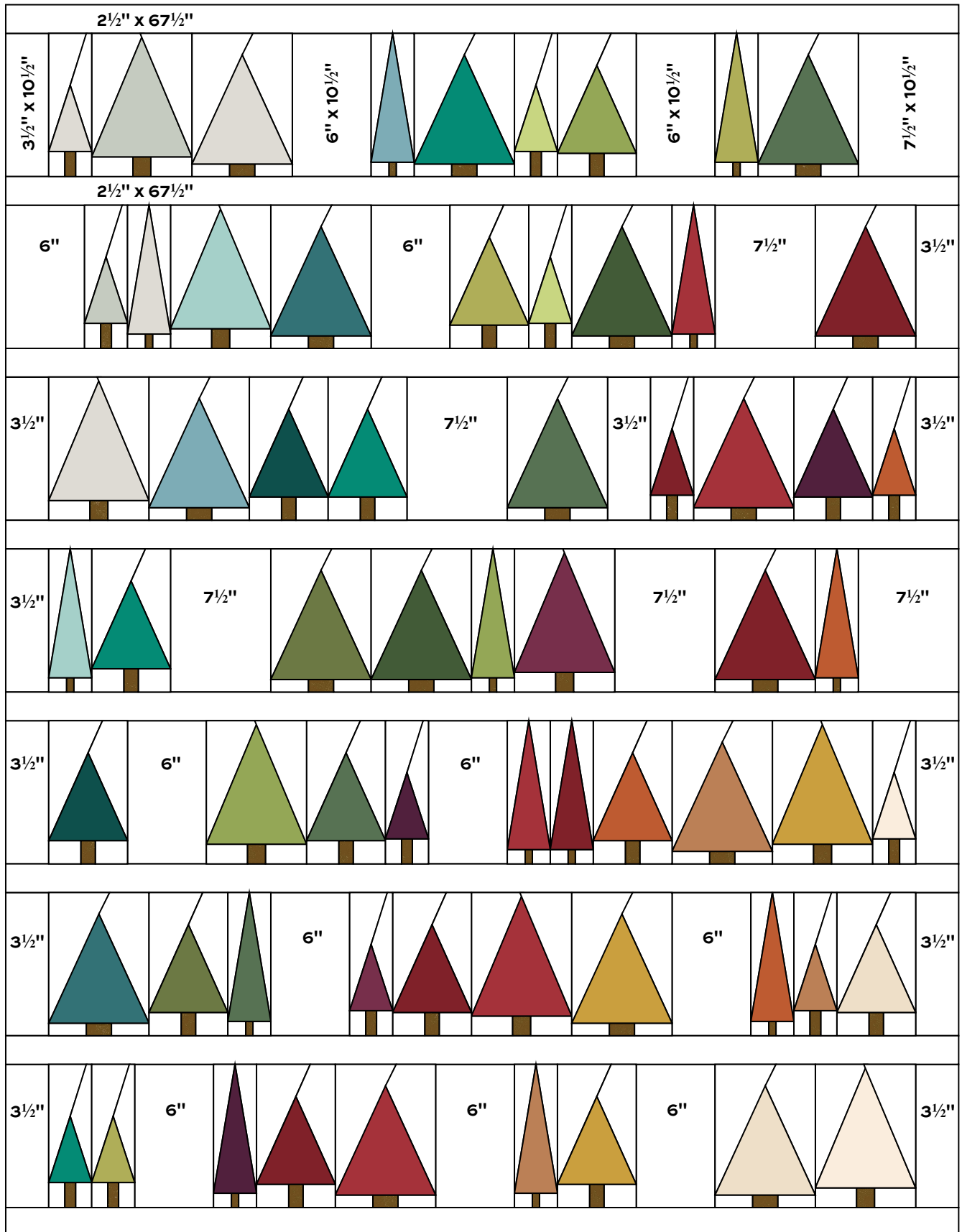
Making the Quilt

1. The blocks use paper-foundation piecing methods (PFP). Photocopy or trace the PFP patterns the number of times shown on each pattern. Hint: Paper made specifically for PFP or good quality tracing paper is ideal because it is sturdy enough to stitch on, and it tears away easily. Be sure the printer is printing at 100%. You will make 2-5 trees from each fabric. Feel free to alter the number you make of each fabric.
2. If you have not used the PFP method before, seek directions online or from a quilting book on the subject. On template plastic, trace the 6 shapes of each tree separately, adding a generous ¼" allowance all around each shape. Label Tree #1-#5 as needed on each template so there is no confusion.
3. We suggest that you cut the 6 patches for one tree from the appropriate fabrics to make a test block to be certain that you understand the PFP stitching. Using PFP methods, join the patches in numerical order, stitching through the fabric and the paper foundation. Because patches 4, 5, and 6 are large, you might use a fabric glue stick to add dots of glue in a couple of places to secure the patch to the paper while stitching. Use a shorter stitch length to make it easier to tear the paper away later. Be sure to stitch from edge to edge as indicated by the dashed lines. Once all 6 patches have been stitched to the paper, trim the fabric even with the outer solid lines.
4. Refer to the Quilt Diagram to determine the fabrics used for each tree, or cut trees as you wish from the prints. Make a total of 64 trees. You can remove the paper from the backs of the trees now or after the blocks are joined into rows in Step 5.
5. Referring to the Quilt Diagram, arrange the trees and Fabric A patches in 7 horizontal rows. Stand back to see if you like the arrangement. Once you are satisfied, join the parts into the rows. Remove the paper from the backs of the trees.
6. Sew the tree rows alternately with Fabric A sashes. Press seam allowances away from the trees.

Finishing the Quilt

7. Layer the quilt with batting and backing and baste. Quilt in the ditch around patches. Quilt around the printed motifs in the trees, and quilt the sashes as desired. Or quilt an overall pattern across the quilt. Bind to finish the quilt.

Natale Quilt



Quilt Diagram

Tree 1
7" x 10" Finished
Make 8

6

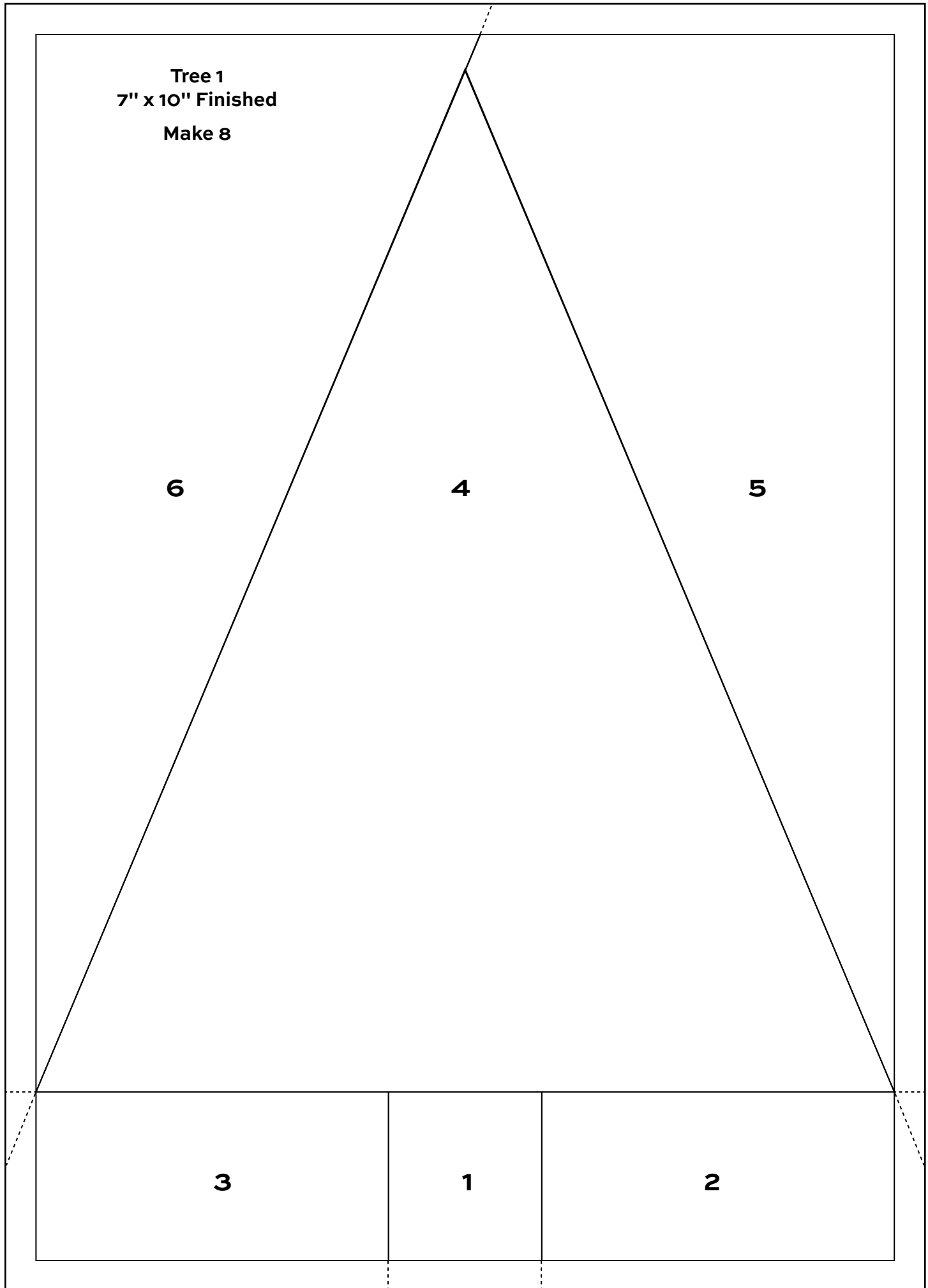
4

5

3

1

2



Tree 2
7" x 10" Finished
Make 17

6

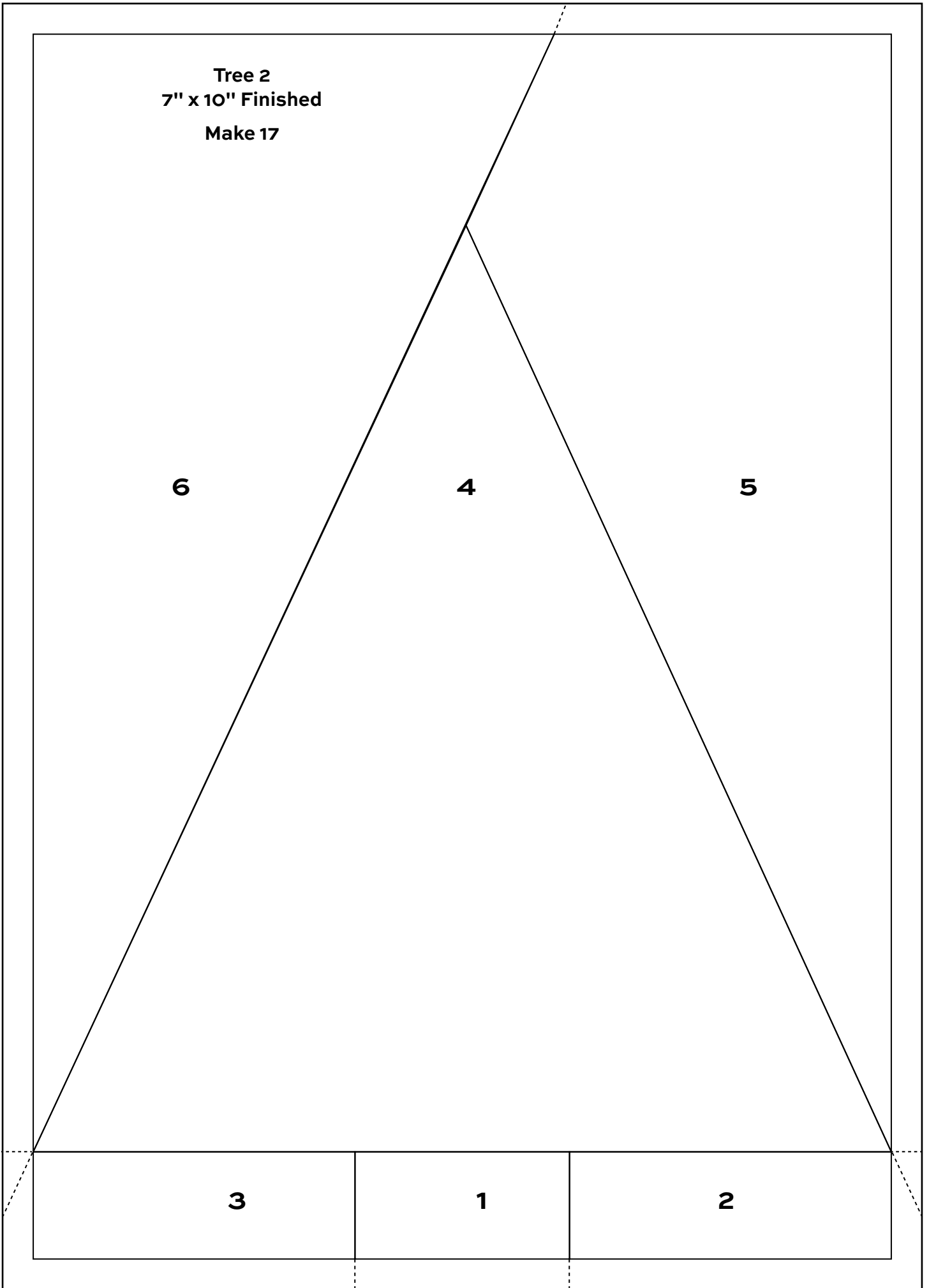
4

5

3

1

2



Tree 3
5½" x 10" Finished
Make 14

6

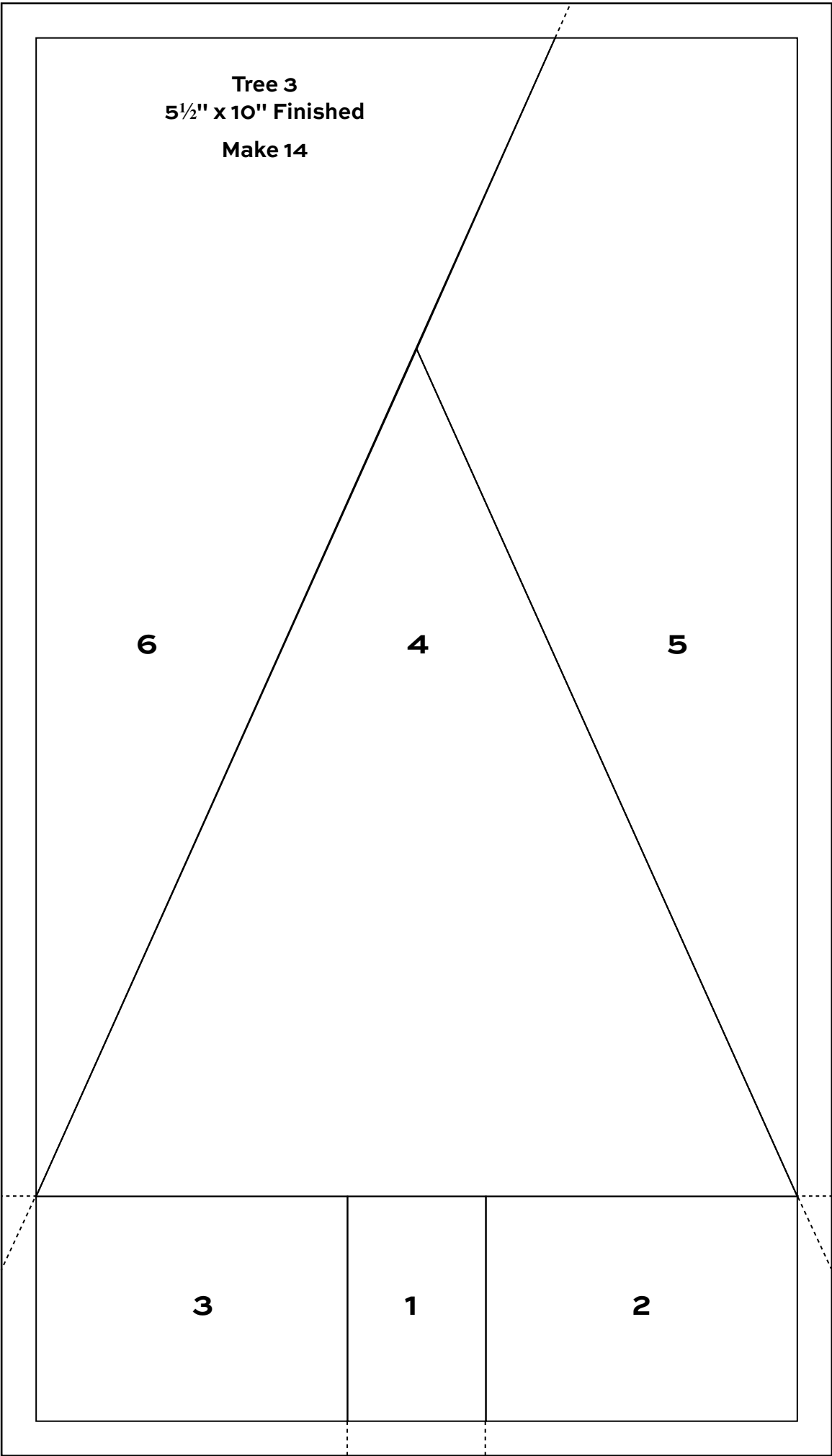
4

5

3

1

2



Tree 4
3" x 10" Finished
Make 12

6

5

4

3

1

2

Tree 5
3" x 10" Finished

Make 13

6

5

4

3

1

2

Natale

GIUCY GIUCE



9872-G



9873-G



9873-L



9873-R



9874-G1



9874-R



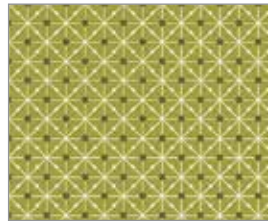
9874-T



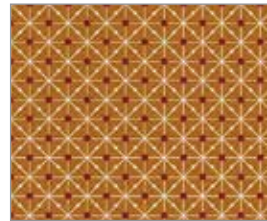
9879-G1



9879-P



9881-G



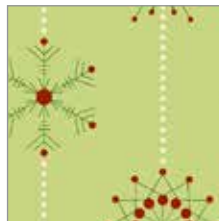
9881-O



9881-T



673-C



673-LG



673-LY



674-LR



674-R



674-T



675-LC



675-T



675-Y



676-G



676-L



676-R



9248-N3

Blend with fabric
from Spectrastic
by Giucy Giuce

All fabrics are used in quilt pattern. Fabrics shown are 50% of actual size.

andover • makower uk

Free Pattern Download Available
1384 Broadway, 24TH Floor, New York, NY 10018
Tel. (800) 223-5678 • andoverfabrics.com