

Spooky Vibe

by Erin Wilde



Quilt design by Denise Russell.

Quilt size: 70.5" x 86"

Skill Level: Advanced Beginner

Blank Quilting Corporation
 49 West 37th Street ♦ New York, NY 10018
 Tel: 800-294-9495 ♦ Fax: 212-679-4578
 www.blankquilting.net

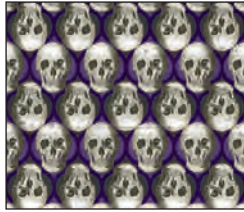
facebook

Free Project
 NOT FOR RESALE

Spooky Vibe - Fabrics in the Collection



2720-55 Potion Labels
Purple



2721-55 Skulls
Purple



2722-90 Spiders and
Webs - Lt. Gray



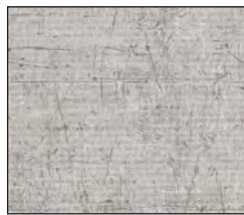
2723-90 Crows in Bell
Jars - Lt. Gray



2724-99 Halloween
Motifs - Charcoal



2725-33 Potion
Bottles - Orange



2726-90 Distressed
Typewritten Paper
Lt. Gray



2727-99 Chandeliers
with Cobwebs
Charcoal



2730P-55 Halloween Panel 24"
Purple



2729P-99 Halloween Block Panel 36"
Charcoal



2728-99 Halloween Border Stripe
Charcoal

Selected fabric from the
Jot Dot Collection



9570-09
Marshmallow



7101-55
Dk. Purple

Selected fabric from the
Urban Legend Collection
by Tana Muller

Materials

Yardages and cutting instructions are based on 42" of usable fabric width.

Three panels 2729P-99 Halloween Block Panel - 36"-Charcoal
1/3 yard 2727-99 Chandeliers with Cobwebs - Charcoal
3/8 yard 2723-90 Crows in Bell Jars - Lt. Gray
3/8 yard 2725-33 Potion Bottles - Orange
1/2 yard 2721-55 Skulls - Purple
5/8 yard 2726-90 Distressed Typewritten Paper - Lt. Gray
2/3 yard 7101-55 Urban Legend – Dk. Purple
3/4 yard 2720-55 Potion Labels - Purple
2-1/8 yards 9570-09 Jot Dot - Marshmallow
5-1/3 yards 2724-99 Halloween Motifs - Charcoal for backing
78-1/2" x 94" piece of Air Lite® Colour Me 100% Cotton batting

Cut Fabrics

Note: All strips are cut across the width of the fabric (WOF) from selvage to selvage unless otherwise indicated.

From 2729P-99 Halloween Block Panel - 36", trim:

*Ten 14-1/2" squares.

From 2727-99 Chandeliers with Cobwebs – Charcoal, cut:

*One 8-1/4" x WOF strip. Sub-cut five 8-1/4" squares; cut twice diagonally. (A)

From each, cut:

2723-90 Crows in Bell Jars - Lt. Gray

2725-33 Potion Bottles - Orange

*Two 5-1/8" x WOF strips. Sub-cut ten 5-1/8" squares.

From 2721-55 Skulls – Purple, cut:

*Three 4-3/8" x WOF strips. Sub-cut twenty 4-3/8" squares.

From 2726-90 Distressed Typewritten Paper - Lt. Gray, cut:

*One 8-1/4" x WOF strip. Sub-cut five 8-1/4" squares; cut twice diagonally. (B)

*Eight 1-1/2" x WOF strips for border 2.

From 7101-55 Urban Legend – Dk. Purple, cut:

*One 2" x WOF strip. Sub-cut twelve 2" squares.

*Eight 2-1/2" x WOF strips for binding.

From 2720-55 Potion Labels – Purple, cut:

*Eight 3" x WOF strips for border 3.

From 9570-09 Jot Dot – Marshmallow, cut:

*One 4-3/8" x WOF strip. Sub-cut nine 4-3/8" squares.

*Two 5-1/8" x WOF strips. Sub-cut forty 1-5/8" x 5-1/8" strips and three 4-3/8" squares.

*Two 7-1/2" x WOF strips. Sub-cut forty 1-5/8" x 7-1/2" strips and three 4-3/8" squares.

*Two 14-1/2" x WOF strips. Sub-cut thirty-five 2" x 14-1/2" strips and five 4-3/8" squares (for a total of 20).

*Seven 2" x WOF strips for border 1.

From 2724-99 Halloween Motifs - Charcoal, cut:

*Two 94" x WOF panels, pieced vertically.

Assemble Blocks

Notes: Measurements include 1/4" seam allowances. Sew with right sides together unless otherwise stated. If no direction is specified, press the seam toward the darker fabric.

1. Sew a 2726-90 Distressed Typewritten Paper - Lt. Gray B triangle to a 2727-99 Chandeliers with Cobwebs – Charcoal A triangle. Make another unit. Press the seams toward the darker fabric. Sew the units together to make a 7-1/2" unit (*figure 1*). Press the seam open. Make a total of ten units.

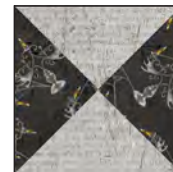


Figure 1 – Make (10) 7-1/2" units.

2. Draw a diagonal line from corner to corner on the wrong side of the 4-3/8" 9570-09 Jot Dot – Marshmallow squares. With right sides together

er, layer the marked Marshmallow squares atop the 4-3/8" 2721-55 Skulls – Purple squares. Stitch 1/4" from each side of the diagonal line, cut on the drawn line, press each unit open with seams toward the darker fabric, and trim dog ears (*figure 2*). Make forty 4" half-square triangles (HST). Sew the HST four by four to make ten 7-1/2" units.

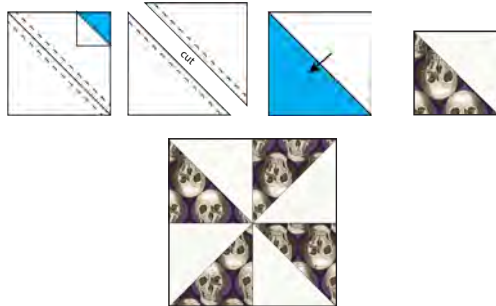


Figure 2 – Make (10) 7-1/2" units.

3. Sew a 1-5/8" x 5-1/8" 9570-09 Jot Dot – Marshmallow strip to opposite sides of a 5-1/8" 2723-90 Crows in Bell Jars - Lt. Gray square. Press the seams away from the center. Sew a 1-5/8" x 7-1/2" Marshmallow strip to the top and one to the bottom (*figure 3*). Press as before. Repeat to make ten 7-1/2" units.



Figure 3 – Make (10) 7-1/2" units.

4. Repeat Step 3 with the 1-5/8" x 5-1/8" and 1-5/8" x 7-1/2" 9570-09 Jot Dot – Marshmallow strips, and the 5-1/8" 2725-33 Potion Bottles – Orange squares to make ten 7-1/2" units (*figure 4*).



Figure 4 – Make (10) 7-1/2" units.

5. Noting the configuration of the units below, assemble ten 14-1/2" blocks (*figure 5*).

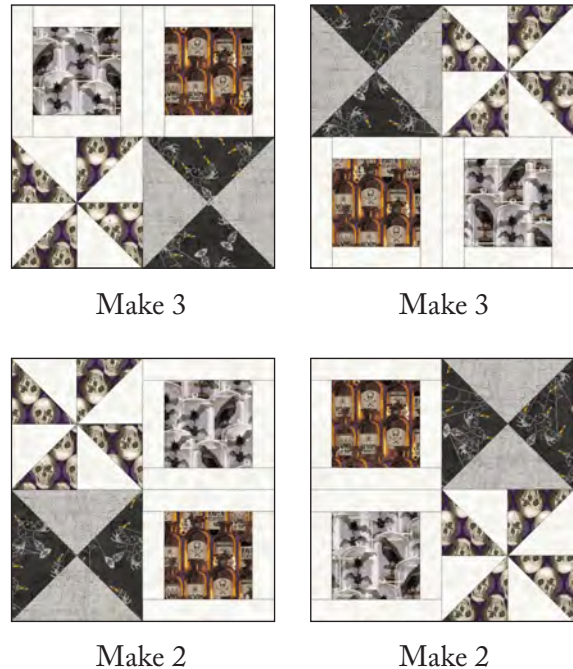


Figure 5 – Make 10 assorted 14-1/2" blocks.

Assemble Quilt Top

6. Referring to the quilt photo for block placement, lay out four blocks and three 2" x 14-1/2" 9570-09 Jot Dot – Marshmallow sashing strips in five rows, and join the blocks and sashing strips together in each row. Press the seams toward the sashing.
7. To make the horizontal sashing rows, sew together four 2" x 14-1/2" Marshmallow sashing strips and three 2" 7101-55 Urban Legend – Dk. Purple cornerstone squares. Repeat to make four sashing strips. Press the seams toward the sashing.
8. Matching adjacent seams, sew block rows and horizontal sashing strips together. Press the seams in one direction.
9. For border 1, sew seven 2" 9570-09 Jot Dot – Marshmallow border strips together end to end using diagonal seams. Measure the verti-

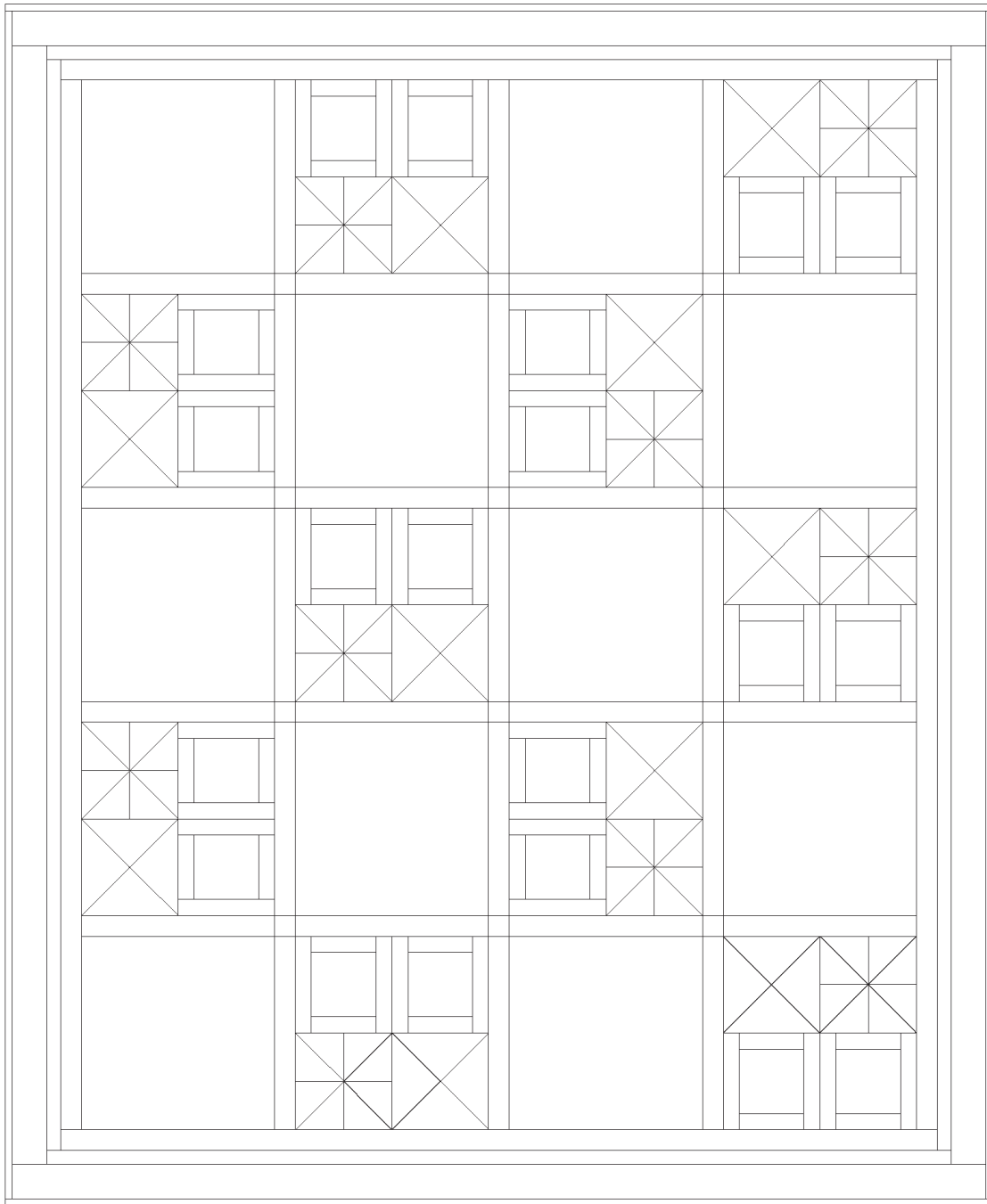
cal length of the quilt top through the center and cut two border strips that length. Sew one strip to each side of the quilt top. Measure the width of the quilt top through the center. Cut two border strips that length and sew one to the top and one to the bottom. Press the seams toward the borders.

10. Repeat Step 9 with the eight 1-1/2" 2726-90 Distressed Typewritten Paper - Lt. Gray strips to make and add border 2.
11. Repeat Step 9 with the eight 3" 2720-55 Potion Labels – Purple strips to make and add border 3.

Finishing

12. Create a quilt sandwich with the batting between the quilt top and the backing. Pin or baste layers together, mark the quilting design, and quilt by hand or machine. When quilting is complete, remove pins or basting, and trim batting and backing even with raw edges of the quilt top.
13. Join the eight 2-1/2" 7101-55 Urban Legend – Dk. Purple binding strips together end to end using a diagonal seam to make one long strip. With wrong sides together, fold in half lengthwise and press. Sew binding to the edges of the quilt, mitering corners, and overlapping ends. Fold binding to the back of the quilt and stitch it in place by hand to finish.

Spooky Vibe - Quilt 2



Quilt Diagram