

# Reminiscence

ANDOVER FABRICS



100  
years



Yesteryear Quilt designed by: **Janet Houts**  
Quilt Size: **62" x 72"** • Skill Level: **Beginner**

andover • [makower uk](http://makower.uk)

Free Pattern Download Available

1384 Broadway New York, NY 10018  
Tel. (800) 223-5678 • [andoverfabrics.com](http://andoverfabrics.com)

12/15/21

# Yesteryear Quilt

Introducing Andover Fabrics new collection: **REMINISCENCE** by Andover Fabrics

Quilt designed by Janet Houts



Quilt finishes 62" x 72"  
30 BlockS: 10" x 10"

*Traditional prints with a quietly elegant palette make up this peaceful topper. Note the diagonal placement of the subtle light and dark blocks.*

## Cutting Directions

**Note:** Read assembly directions before cutting patches. All measurements are cut sizes and include 1/4" seam allowances. A fat 1/8 is a 9" x 20"-22" cut of fabric. A fat 1/4 is an 18" x 20"-22" cut. Borders are cut the exact lengths required plus 1/4" seam allowances. WOF designates the width of fabric from selvedge to selvedge (approximately 43" wide).

### Cutting for ONE block:

#### Fabric A or B:

Cut (4) squares 3"  
Cut (1) square 5 7/8", cut in half diagonally to make 2 half-square triangles

#### 1 Med. or Dk. Print:

Cut (4) squares 3"  
Cut (1) square 5 7/8", cut in half diagonally to make 2 half-square triangles

### Cutting for quilt:

#### Fabric A

Cut (4) borders 5 1/2" x 62 1/2"  
Cut (15) squares 5 7/8", cut in half to make 30 half-square triangles  
Cut (60) squares 3"

#### Fabric B

Cut (15) squares 5 7/8", cut in half to make 30 half-square triangles  
Cut (60) squares 3"

#### 14 Med. and Dk. Prints From each:

Cut (8) squares 3"  
Cut (2) squares 5 7/8", cut in half to make 2 half-square triangles

#### 2 Prints From each:

Cut (4) squares 3"  
Cut (1) square 5 7/8", cut in half to make 2 half-square triangles

## Fabric Requirements

		Yardage	Fabric
<b>Fabric A</b>	border	2 yards	339-P
<b>Fabric B</b>	border	1 1/2 yards	337-P
<b>7 Med.</b>	blocks	fat 1/4 each	
	331-K	332-K	332-P
	335-K	335-P	337-K
<b>7 Dk.</b>	blocks	fat 1/4 each	
	331-P	333-P	334-K
	338-K	338-P	339-K
<b>2 Prints</b>	blocks	fat 1/8 each	
	340-K	340-P	
<b>2 Stripes</b>	border	fat 1/4 each	
	336-K	336-P	
<b>Binding</b>		1/2 yard	340-K
<b>Backing</b>		4 yards	337-K

#### 2 Stripes From each:

Cut (11) rectangles 1 1/2" x 10 1/2", cut crosswise  
Cut (2) squares 1 1/2" for border corners

#### Binding

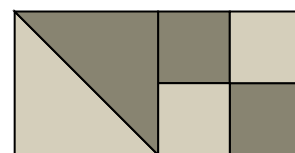
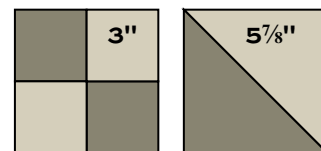
Cut (7) strips 2 1/2" x WOF for binding

#### Backing

Cut (2) lengths 40" x 70", pieced to fit quilt top with overlap on all sides

## Making the Quilt

- The 7 medium prints are each used in 2 blocks with the Fabric A print. The 340-P print is used in 1 block with Fabric A. The 7 dark prints are each used in 2 blocks with Fabric B, and the 340-K print is in 1 block with Fabric B.
- Referring to the Block diagram, arrange the 3" squares and the half-square triangles to make 4 units. Each unit should measure 5 1/2" square. If they do not, adjust your stitching and/or pressing techniques. Join the 4 units to make a block that should measure 10 1/2" square from edge to edge. Make a total of 30 blocks.

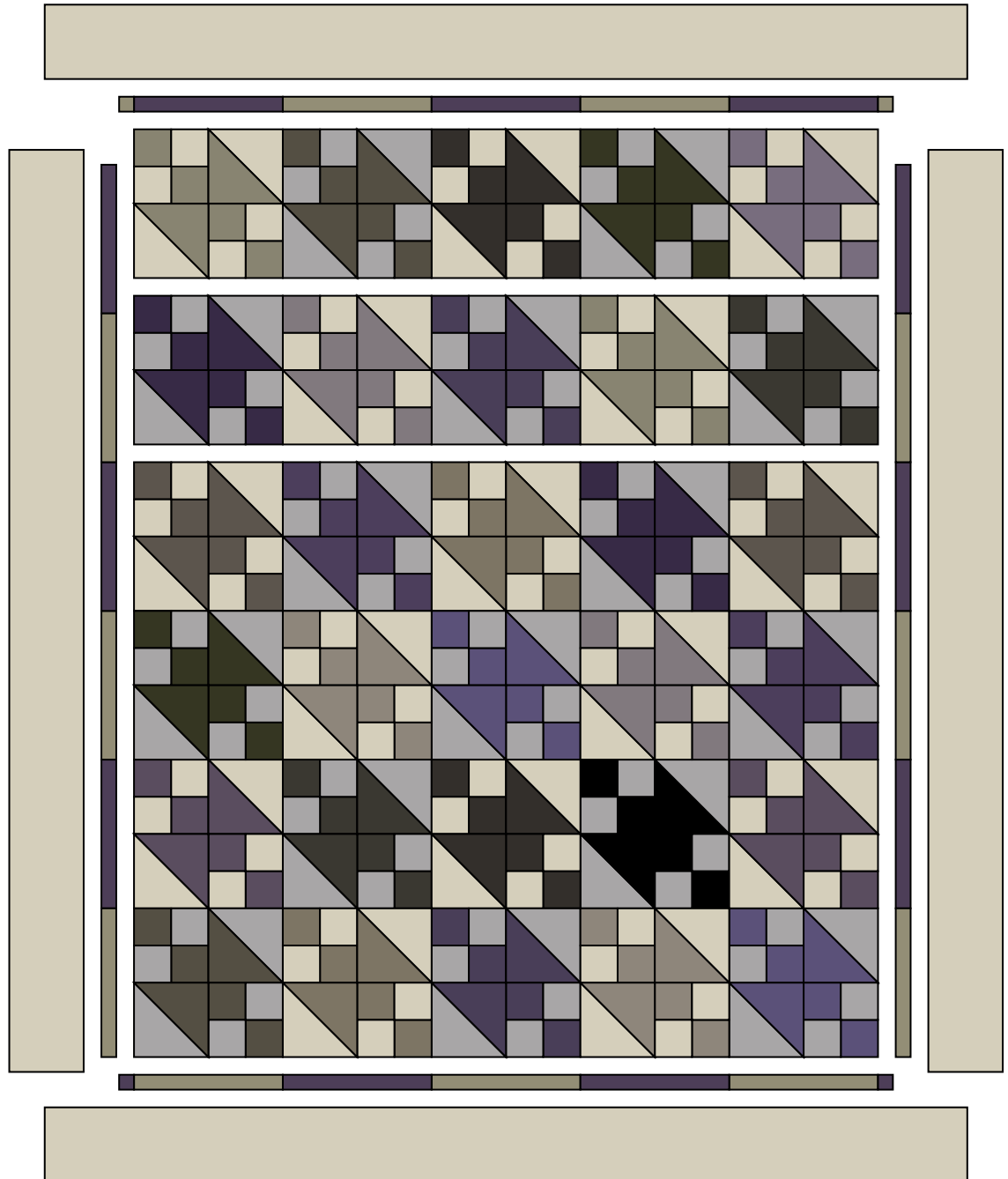


**Block – Make 30**

3. Arrange the blocks in rows, alternating the light and dark blocks as shown in the Quilt Diagram. The single blocks are in the top right and bottom left corners. Looking through a camera or the wrong end of binoculars may help you find mistakes. Once you are satisfied with the arrangement, join the blocks and patches in horizontal rows, and then join the rows.
4. Join the stripe print rectangles end to end to make pieced borders, referring to the Quilt Diagram for color placement. Sew the longer pieced borders to the sides. Add the 1/2" squares at ends of shorter borders, and sew to the top and bottom.
5. Sew Fabric A borders to the sides, and then sew remaining borders to the top and bottom.

## Finishing the Quilt

6. Layer the quilt with batting and backing and baste. Quilt in the ditch around borders and block patches. Or, quilt an overall motif. Bind to finish the quilt.



Quilt Diagram



# Reminiscence

ANDOVER FABRICS

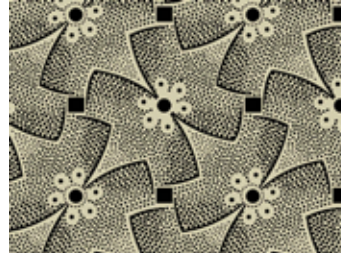
**a**  
100  
years



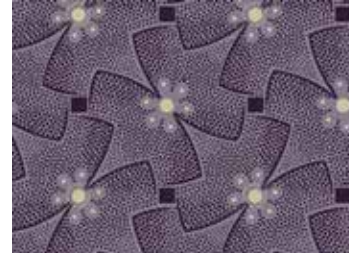
331-K



331-P



332-K



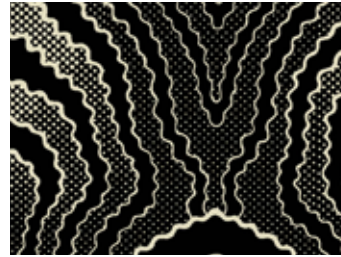
332-P



333-K



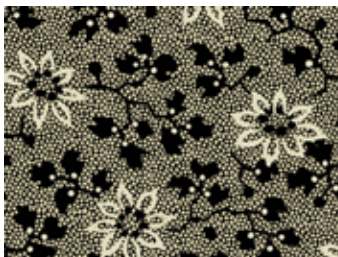
333-P



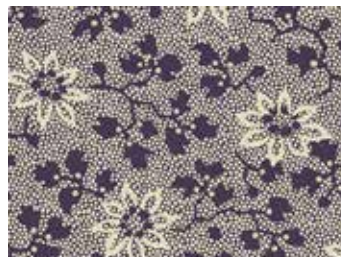
334-K



334-P



335-K



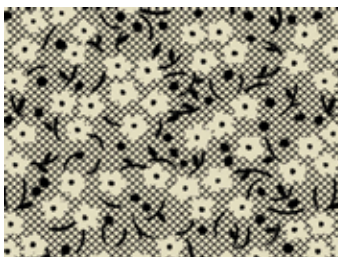
335-P



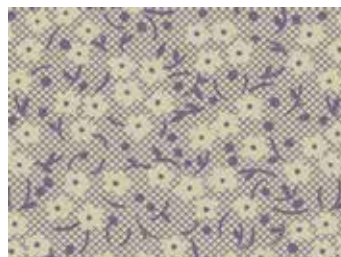
336-K



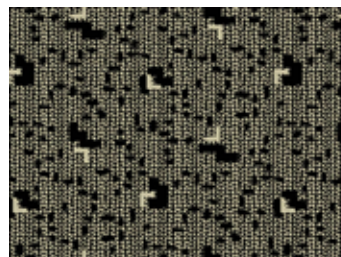
336-P



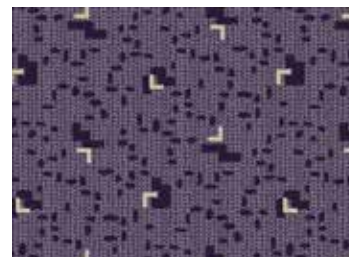
337-K



337-P



338-K



338-P



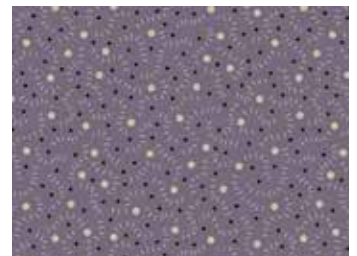
339-K



339-P



340-K



340-P

All fabrics are used in quilt pattern. Fabrics shown are 75% of actual size.

andover

makower uk

Free Pattern Download Available

1384 Broadway New York, NY 10018  
Tel. (800) 223-5678 • andoverfabrics.com