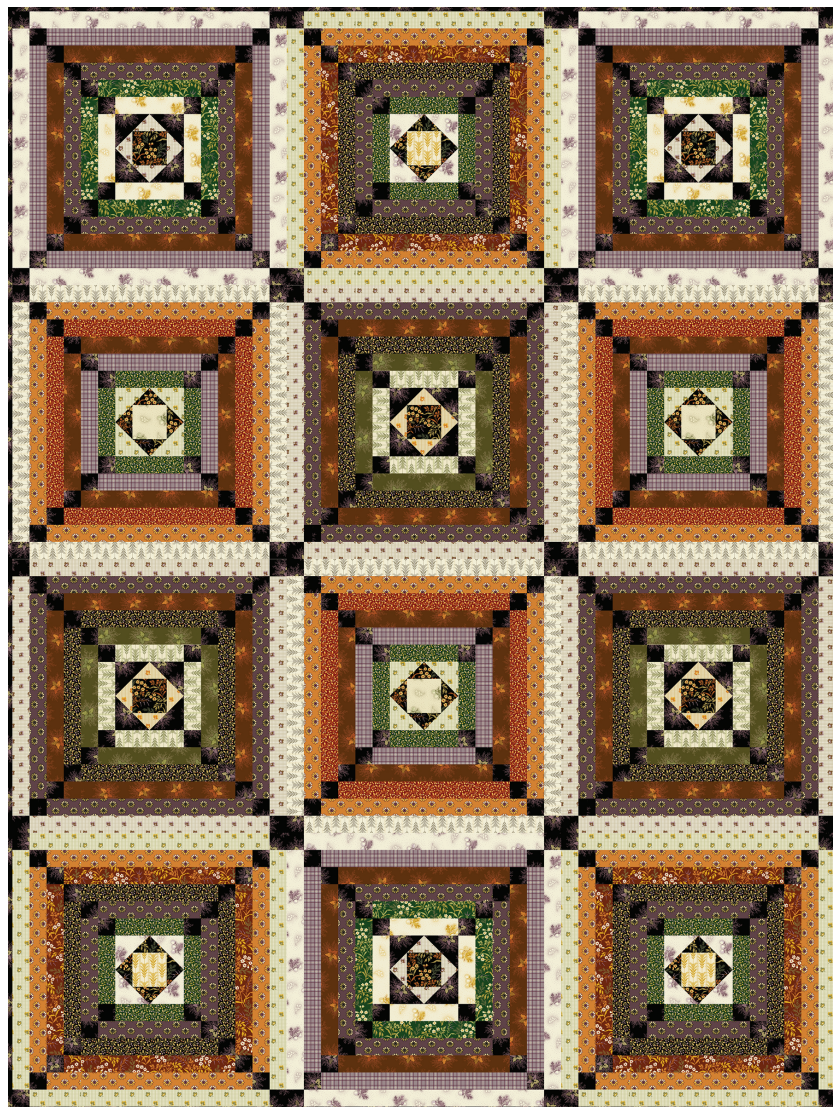


# Spiced Cider

ANDOVER FABRICS



100  
years



Colors of Fall Quilt designed by: Heidi Pridemore • Quilt Size: 48" x 64"

Skill Level: **Advanced Beginner**

andover • makower uk

Free Pattern Download Available

1384 Broadway New York, NY 10018

Tel. (800) 223-5678 • [andoverfabrics.com](http://andoverfabrics.com)

# Colors of Fall



Featuring Andover Fabrics new Collection: Spiced Cider

Quilt designed by Heidi Pridemore of The Whimsical Workshop

Quilt finished 48" x 64"

## Cutting Directions

**Note: Read assembly directions before cutting patches.** Borders are cut to exact length required plus 1/4" seam allowance. WOF designates the width of fabric from selvedge to selvedge (approximately 42" wide).

**Fabric A** Cut (1) 2 1/2" x WOF strip. Sub-cut the strip into (6) 2 1/2" squares.  
Cut (1) 1 1/2" x WOF strip. Sub-cut the strip into (12) 1 1/2" x 2 1/2" strips.  
Cut (2) 1 1/2" x WOF strips. Sub-cut the strips into (12) 1 1/2" x 4 1/2" strips.

**Fabric B** Cut (1) 1 1/2" x WOF strip. Sub-cut the strip into (6) 1 1/2" x 2 1/2" strips.  
Cut (1) 1 1/2" x WOF strip. Sub-cut the strip into (6) 1 1/2" x 4 1/2" strips.  
Cut (6) 1 1/2" x WOF strips. Sub-cut the strips into (12) 1 1/2" x 14 1/2" strips.

**Fabric C** Cut (2) 2 1/2" x WOF strips. Sub-cut the strips into (24) 2 1/2" squares.  
Cut (11) 1 1/2" x WOF strips. Sub-cut the strips into (288) 1 1/2" squares.  
Cut (6) 2 1/2" x WOF strips for the binding.

**Fabric D** Cut (2) 1 1/2" x WOF strips. Sub-cut the strips into (12) 1 1/2" x 4 1/2" strips.

**Fabric E** Cut (2) 1 1/2" x WOF strips. Sub-cut the strips into (12) 1 1/2" x 6 1/2" strips.

**Fabric F** Cut (3) 1 1/2" x WOF strips. Sub-cut the strips into (12) 1 1/2" x 8 1/2" strips.  
Cut (2) 1 1/2" x WOF strips. Sub-cut the strips into (12) 1 1/2" x 6 1/2" strips.  
Cut (4) 1 1/2" x WOF strips. Sub-cut the strips into (12) 1 1/2" x 12 1/2" strips.

**Fabric G** Cut (6) 1 1/2" x WOF strips. Sub-cut the strips into (24) 1 1/2" x 10 1/2" strips.  
Cut (3) 1 1/2" x WOF strips. Sub-cut the strips into (12) 1 1/2" x 8 1/2" strips.

## Fabric Requirements

		Yardage	Fabric
<b>Fabric A</b>	<b>blocks</b>	3/8 yard	245-K
<b>Fabric B</b>	<b>blocks</b>	1/2 yard	250-P
<b>Fabric C</b>	<b>blocks, binding</b>	1 1/4 yards	246-P
<b>Fabric D</b>	<b>blocks</b>	1/4 yard	249-Y
<b>Fabric E</b>	<b>blocks</b>	1/4 yard	245-G
<b>Fabric F</b>	<b>blocks</b>	1/2 yard	248-P
<b>Fabric G</b>	<b>blocks</b>	1/2 yard	246-O
<b>Fabric H</b>	<b>blocks</b>	3/8 yard	252-P
<b>Fabric I</b>	<b>blocks</b>	1/2 yard	249-P
<b>Fabric J</b>	<b>blocks</b>	1/8 yard	249-G
<b>Fabric K</b>	<b>blocks</b>	1/2 yard	250-G
<b>Fabric L</b>	<b>blocks</b>	1/4 yard	247-G
<b>Fabric M</b>	<b>blocks</b>	1/4 yard	247-O
<b>Fabric N</b>	<b>blocks</b>	1/2 yard	248-O
<b>Fabric O</b>	<b>blocks</b>	3/8 yard	251-N
<b>Fabric P</b>	<b>blocks</b>	1/8 yard	251-Y
<b>Fabric Q</b>	<b>blocks</b>	3/8 yard	247-P
<b>Fabric R</b>	<b>blocks</b>	1/4 yard	245-R
<b>Fabric S</b>	<b>blocks</b>	1/4 yard	250-O
<b>Fabric T</b>	<b>blocks</b>	1/4 yard	251-G
<b>Fabric U</b>	<b>blocks</b>	1/4 yard	246-G
<b>Backing</b>		3 1/4 yards	252-Y

**Fabric H** Cut (4) 1 1/2" x WOF strips. Sub-cut the strips into (12) 1 1/2" x 12 1/2" strips.  
Cut (2) 1 1/2" x WOF strips. Sub-cut the strips into (12) 1 1/2" x 6 1/2" strips.

**Fabric I** Cut (1) 2 1/2" x WOF strip. Sub-cut the strip into (12) 2 1/2" squares.  
Cut (6) 1 1/2" x WOF strips. Sub-cut the strips into (12) 1 1/2" x 14 1/2" strips.

**Fabric J** Cut (1) 2 1/2" x WOF strip. Sub-cut the strip into (3) 2 1/2" squares.

**Fabric K** Cut (1) 2 1/2" x WOF strip. Sub-cut the strip into (12) 2 1/2" squares.  
Cut (6) 1 1/2" x WOF strips. Sub-cut the strips into (12) 1 1/2" x 14 1/2" strips.

**Fabric L** Cut (3) 1 1/2" x WOF strips. Sub-cut the strips into (24) 1 1/2" x 4 1/2" strips.

# Colors of Fall

## Cutting Directions - Continued

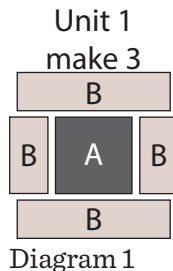
- Fabric M** Cut (3) 1 1/2" x WOF strips. Sub-cut the strips into (12) 1 1/2" x 10 1/2" strips.
- Fabric N** Cut (8) 1 1/2" x WOF strips. Sub-cut the strips into (24) 1 1/2" x 12 1/2" strips.
- Fabric O** Cut (6) 1 1/2" x WOF strips. Sub-cut the strips into (12) 1 1/2" x 14 1/2" strips.
- Fabric P** Cut (1) 2 1/2" x WOF strip. Sub-cut the strip into (3) 2 1/2" squares.
- Fabric Q** Cut (6) 1 1/2" x WOF strips. Sub-cut the strips into (24) 1 1/2" x 8 1/2" strips.
- Fabric R** Cut (3) 1 1/2" x WOF strips. Sub-cut the strips into (12) 1 1/2" x 10 1/2" strips.
- Fabric S** Cut (1) 1 1/2" x WOF strip. Sub-cut the strip into (6) 1 1/2" x 2 1/2" strips.  
Cut (1) 1 1/2" x WOF strip. Sub-cut the strip into (6) 1 1/2" x 4 1/2" strips.
- Fabric T** Cut (2) 1 1/2" x WOF strips. Sub-cut the strips into (12) 1 1/2" x 4 1/2" strips.
- Fabric U** Cut (2) 1 1/2" x WOF strips. Sub-cut the strips into (12) 1 1/2" x 6 1/2" strips.
- Backing** Cut (2) 56" x WOF strips. Sew the strips together and trim to make (1) 56" x 72" backing.

## Making the Quilt

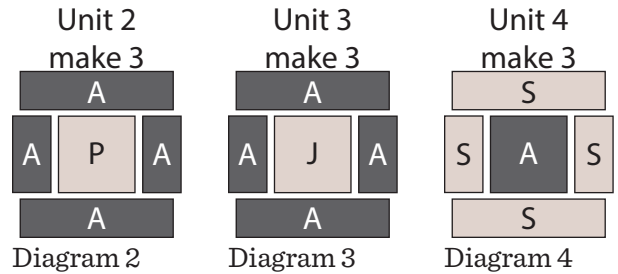
*Note: The arrows in figures represent the fabric print direction. Pay attention to the fabric and unit orientations when assembling the various components.*

### 1. Block Assembly

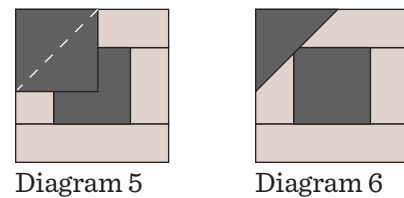
Sew (1) 1 1/2" x 2 1/2" Fabric B strip to each side of (1) 2 1/2" Fabric A square. Sew (1) 1 1/2" x 4 1/2" Fabric B strip to the top and to the bottom of the Fabric A square to make (1) 4 1/2" Unit 1 square (Diagram 1). Repeat to make (3) Unit 1 squares total.



2. Repeat Step 1 and refer to Diagrams 2-4 for fabric identification and placement to make (3) Unit 2 squares, (3) Unit 3 squares and (3) Unit 4 squares.

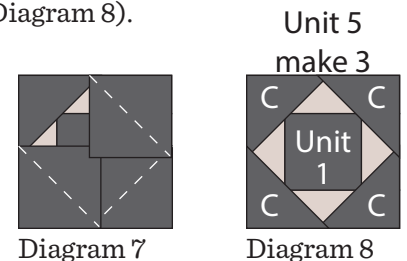


3. Place (1) 2 1/2" Fabric C square on the top left corner of (1) Unit 1 square, right sides together (Diagram 5). Sew across the diagonal of the smaller square from the upper right corner to the lower left corner (Diagram 5). Flip open the triangle formed and press. Trim away the excess fabric from behind the triangle 1/4" away from the sewn seam (Diagram 6).

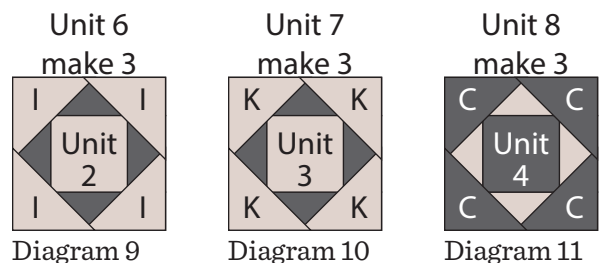


4. Follow Diagram 7 for the seam direction to add a 2 1/2" Fabric C square to each of the remaining corners of the Unit 1 square to make (1) Unit 5 square (Diagram 8).

5. Repeat Steps 3-4 to make (3) Unit 5 squares total.



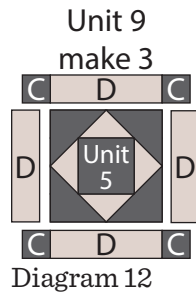
6. Repeat Steps 3-4 and refer to Diagrams 9-11 for component identification, placement and seam direction to make (3) Unit 6 squares, (3) Unit 7 squares and (3) Unit 8 squares.



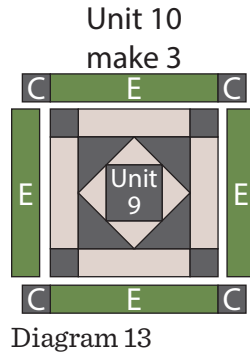


# Colors of Fall

7. Sew (1) 1 1/2" Fabric C square to each end of (1) 1 1/2" x 4 1/2" Fabric D strip to make the top row. Repeat to make the bottom row. Sew (1) 1 1/2" x 4 1/2" Fabric D strip to each side of (1) Unit 5 square to make the middle row. Sew together the (3) rows lengthwise to make (1) 6 1/2" Unit 9 square (Diagram 12). Repeat to make (3) Unit 9 squares total.

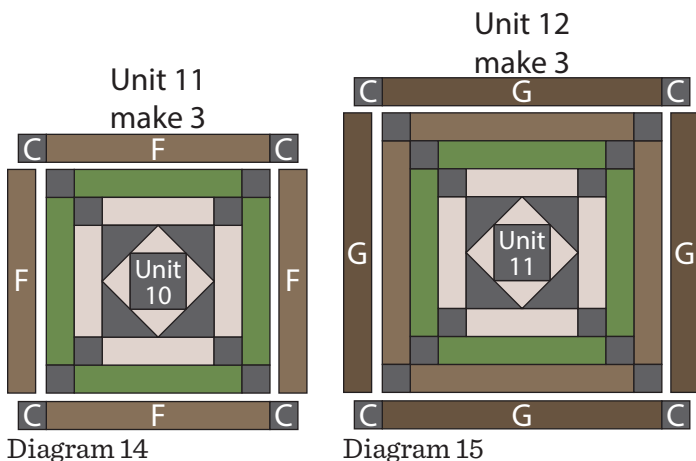


8. Sew (1) 1 1/2" Fabric C square to each end of (1) 1 1/2" x 6 1/2" Fabric E strip to make the top row. Repeat to make the bottom row. Sew (1) 1 1/2" x 6 1/2" Fabric E strip to each side of (1) Unit 9 square to make the middle row. Sew together the (3) rows lengthwise to make (1) 8 1/2" Unit 10 square (Diagram 13). Repeat to make (3) Unit 10 squares total.

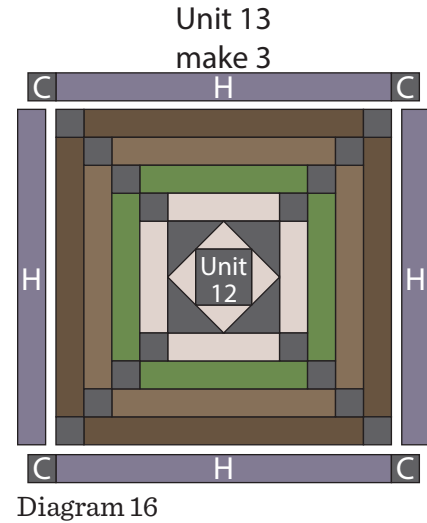


9. Sew (1) 1 1/2" Fabric C square to each end of (1) 1 1/2" x 8 1/2" Fabric F strip to make the top row. Repeat to make the bottom row. Sew (1) 1 1/2" x 8 1/2" Fabric F strip to each side of (1) Unit 10 square to make the middle row. Sew together the (3) rows lengthwise to make (1) 10 1/2" Unit 11 square (Diagram 14). Repeat to make (3) Unit 11 squares total.

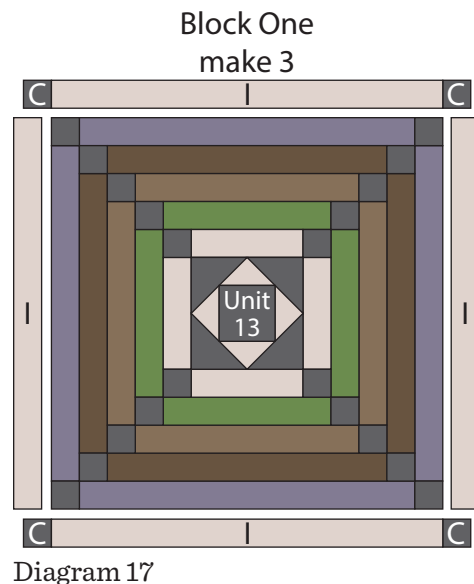
10. Sew (1) 1 1/2" Fabric C square to each end of (1) 1 1/2" x 10 1/2" Fabric G strip to make the top row. Repeat to make the bottom row. Sew (1) 1 1/2" x 10 1/2" Fabric G strip to each side of (1) Unit 11 square to make the middle row. Sew together the (3) rows lengthwise to make (1) 12 1/2" Unit 12 square (Diagram 15). Repeat to make (3) Unit 12 squares total.



11. Sew (1) 1 1/2" Fabric C square to each end of (1) 1 1/2" x 12 1/2" Fabric H strip to make the top row. Repeat to make the bottom row. Sew (1) 1 1/2" x 12 1/2" Fabric H strip to each side of (1) Unit 12 square to make the middle row. Sew together the (3) rows lengthwise to make (1) 14 1/2" Unit 13 square (Diagram 16). Repeat to make (3) Unit 13 squares total.



12. Sew (1) 1 1/2" Fabric C square to each end of (1) 1 1/2" x 14 1/2" Fabric I strip to make the top row. Repeat to make the bottom row. Sew (1) 1 1/2" x 14 1/2" Fabric I strip to each side of (1) Unit 13 square to make the middle row. Sew together the (3) rows lengthwise to make (1) 16 1/2" Block One square (Diagram 17). Repeat to make (3) Block One squares total.





# Colors of Fall

13. Repeat Steps 7-12 and refer to Diagrams 18-20 for component identification and placement to make (3) Block Two squares, (3) Block Three squares and (3) Block Four squares.

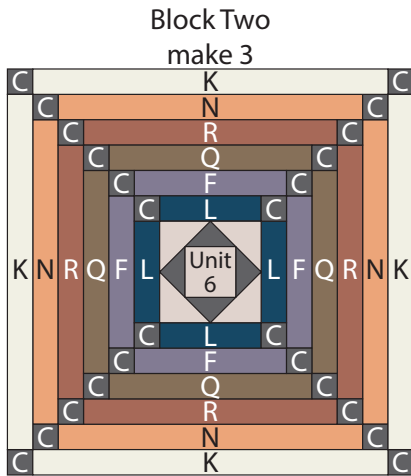


Diagram 18

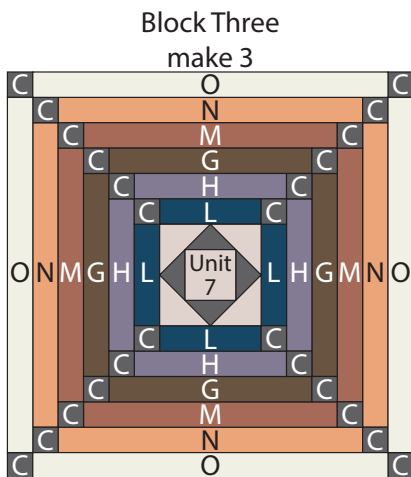


Diagram 19

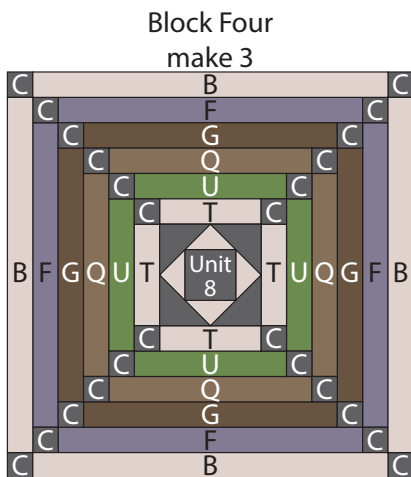


Diagram 20

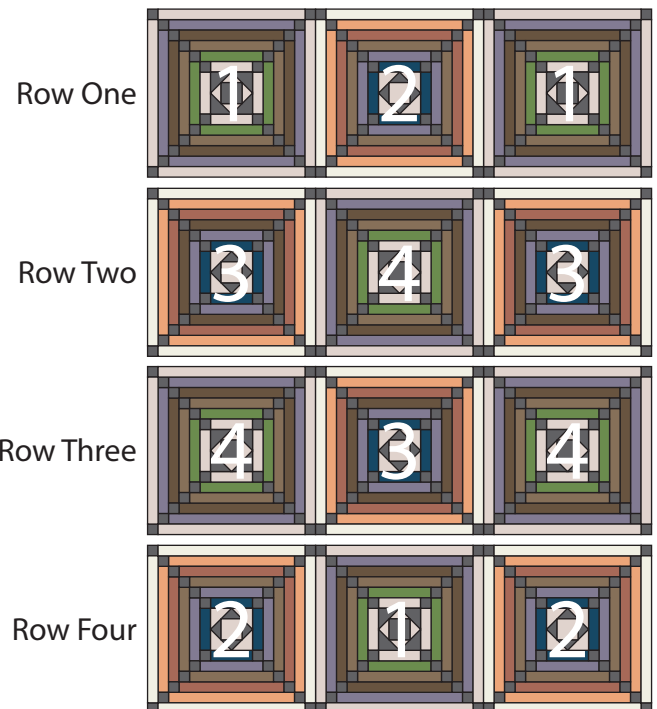
## Quilt Top Assembly

*(Refer to the Quilt Layout when assembling the quilt top.)*

14. Sew (1) Block One square to each side of (1) Block Two square to make Row One.
15. Sew (1) Block Three square to each side of (1) Block Four square to make Row Two.
16. Sew (1) Block Four square to each side of (1) Block Three square to make Row Three.
17. Sew (1) Block Two square to each side of (1) Block One square to make Row Four.
18. Sew together the (4) Rows from Steps 14-17, lengthwise and in numerical order from the top to the bottom, to make the quilt top.

## Finishing the Quilt

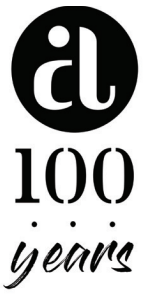
19. Layer and quilt as desired.
20. Sew the (6) Fabric C binding strips together, end to end with a 45-degree seams, to make the binding. Fold this long strip in half lengthwise with wrong sides together and press.
22. Bind as desired.



Quilt Layout

# Spiced Cider

ANDOVER FABRICS



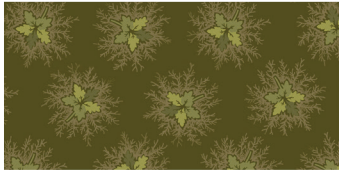
245-G 1/4 yd



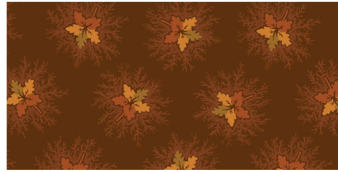
245-K 3/8 yd



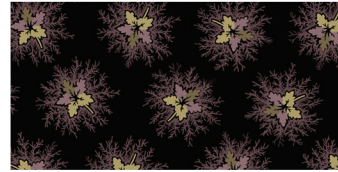
245-R 1/4 yd



246-G 1/4 yd



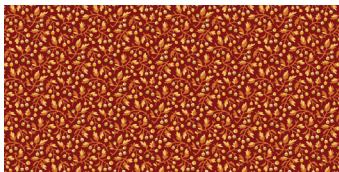
246-O 1/2 yd



246-P 1 1/4 yds  
(includes binding)



247-G 1/4 yd



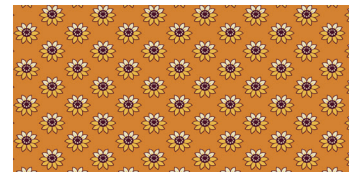
247-O 1/4 yd



247-P 3/8 yd



248-G



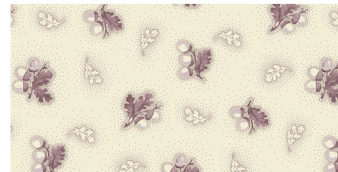
248-O 1/2 yd



248-P 1/2 yd



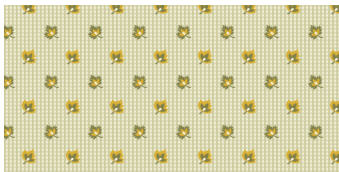
249-G 1/8 yd



249-P 1/2 yd



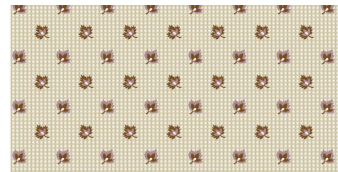
249-Y 1/4 yd



250-G 1/2 yd



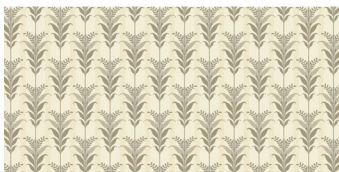
250-O 1/4 yd



250-P 1/2 yd



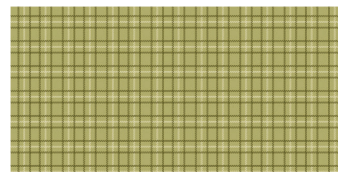
251-G 1/4 yd



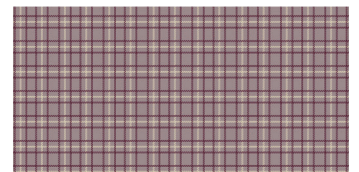
251-N 3/8 yd



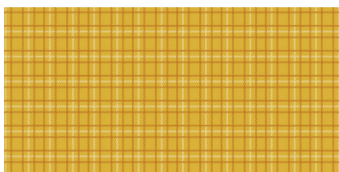
251-Y 1/8 yd



252-G



252-P 3/8 yd



252-Y 3 1/4 yds  
(includes backing)

## About Our Fabrics

A recognized leader in the quilting industry, Andover Fabrics features designs by a wide variety of talented artists and licenses, including Downton Abbey and Eric Carle's The Very Hungry Caterpillar. Catering to the tastes of creative and dedicated quilters, Andover has a style for everyone — authentic reproductions, romantic florals, modern and more.

Fabrics shown are 25% of actual size.

andover

•  
• [makower.uk](http://makower.uk)  
•

Free Pattern Download Available

1384 Broadway New York, NY 10018  
Tel. (800) 223-5678 • [andoverfabrics.com](http://andoverfabrics.com)