

# Midnight Magic

RENÉE NANNEMAN

**a**  
100  
*years*



Midnight Tumble Quilt designed by: **Renée Nanneman**

Quilt Size: **37" x 37"** • Skill Level: **Beginner**

andover : makower uk

Free Pattern Download Available

1384 Broadway New York, NY 10018  
Tel. (800) 223-5678 • [andoverfabrics.com](http://andoverfabrics.com)

10/15/21

# Midnight Tumble Quilt

Introducing Andover Fabrics new collection: **MIDNIGHT MAGIC** by Renée Nanneman

Quilt designed by Renée Nanneman



Quilt finishes 37" x 37"  
16 Blocks: 8" x 8"

*Lovely jewel-colored Flying Geese are enhanced by the surrounding black prints. The small wall quilt is perfect to decorate a place in your home that would benefit from a touch of color. Easy-to-piece units make quick work of this project.*

## Cutting Directions

**Note:** Read assembly directions before cutting patches. All measurements are cut sizes and include 1/4" seam allowances. A fat 1/8 is a 9" x 20"-22" cut of fabric. Sashes are cut the exact lengths required plus 1/4" seam allowances. WOF designates the width of fabric from selvedge to selvedge (approximately 43" wide).

**Read Steps 1 and 2 before cutting patches.**

**For ONE Block:**

**8 Black Prints:** From each:  
Cut (2) squares 2 1/2"  
(Use 8 different black fabrics per block.)

**2 Bright Solids** From each:  
Cut (2) rectangles 2 1/2" x 4 1/2"

**4 Bright Prints** From each:  
Cut (1) rectangle 2 1/2" x 4 1/2"

**For Quilt:**

**Black Solid** Cut (5) sashes 1 1/2" x 37 1/2", cut crosswise  
Cut (20) sashes 1 1/2" x 8 1/2"

**16 Black Prints** From each:  
Cut (16) squares 2 1/2" (256 total)

**8 Bright Solids** From each:  
Cut (8) rectangles 2 1/2" x 4 1/2" (64 total)

**14 Bright Prints** From each:  
Cut (3-6) rectangles 2 1/2" x 4 1/2" (64 total)

**Binding** Cut (1) square 25" for bias binding (Read Step 7).  
OR Cut (4) strips 2 1/2" x WOF for traditional binding

**Backing** Cut (1) panel 43" x 43"

## Fabric Requirements

		Yardage	Fabric	
<b>16 Black Prints</b>	blocks	fat 1/8 yard each		
	264-KC	265-KN	265-KC	265-KN
	266-KC	266-KN	267-KC	267-KP
	268-KC	268-KP	269-KC	269-KN
	270-KC	270-KG	271-KC	271-KN
<b>8 Bright Solids</b>	blocks	fat 1/8 yard each		
From Linen Texture by MakowerUK				
	1473-L5	1473-L6	1473-S4	1473-Y7
From Linen Texture by Laundry Basket Quilts				
	9057-O	9057-O1	9057-O2	9057-R1
<b>14 Bright Prints</b>	blocks	fat 1/8 yard each		
From Witchypoo by Renée Nanneman				
	255-O	256-K	256-N	257-KN
	257-KO	258-O	259-P	260-K
	260-O	261-N	261-O	263-N
	263-O	263-P		
<b>Black Solid</b>	sashes	1/2 yard	CS-10 Black*	
<b>Binding</b>		3/4 yard	268-KC	
<b>Backing</b>		1 1/4 yards	270-KC	

\*Century Solids by Andover Fabrics (10 yard bolts)

1. The quilt is made with easy Flying Geese units. With a white or yellow pencil, lightly draw a diagonal line on the wrong side of each black 2 1/2" square. Place a marked square on one end of a 2 1/2" x 4 1/2" rectangle, right sides together (Diagram 1). Sew on the marked line; trim away and discard excess fabric. Press open. Using the same black fabric for the second square, repeat this process on the opposite end of the rectangle (Diagram 2) to make a Flying Geese unit. Study the quilt photograph for color combinations, or combine the fabrics as you wish. Make 128 total Flying Geese.



Diagram 1



Diagram 2

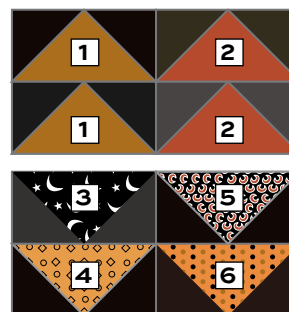


Flying Geese  
Make 128

# Midnight Tumble Quilt



2. Choose 2 Flying Geese made with the same solid fabrics, but with 2 different black prints. Choose another pair of Flying Geese with a second solid fabric and 2 more black prints. Choose 4 more Flying Geese with 4 different bright prints and 4 different black prints. Study the quilt photograph for color combinations, or combine the fabrics as you wish.



Block – Make 16

3. Referring to the block diagram, arrange the Flying Geese into 4 rows, rotating them as shown. Take careful note of placement of the solid and print fabrics. Join the units to make a block. Make 16 blocks.

4. Referring to the Quilt Diagram, arrange the blocks in 4 rows of 4 blocks each, rotating the blocks alternately as shown. Again, note carefully the placement of the solid fabrics. Looking through a camera or the wrong end of binoculars may help you find mistakes.

5. Position 5 short black sashes between blocks and at ends of rows. Once you are satisfied with the arrangement, join the blocks and short sashes in rows. Finally, join the long black sashes between rows and at the top and bottom.

## Finishing the Quilt

6. Layer the quilt with batting and backing and baste. Quilt in the ditch around sashes and block patches. Or, quilt an overall pattern.

7. Bias Binding: If you choose to use bias binding as shown, follow these directions. Cut the black 25" square in half diagonally (Diagram 3). Shift the left triangle and sew it to the opposite straight side of the other triangle (Diagram 4). Press the seam allowance in one direction. Cut 2½"-wide strips parallel to the angled edge as shown. Join the bias strips end to end and bind the quilt in the usual manner.

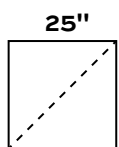


Diagram 3

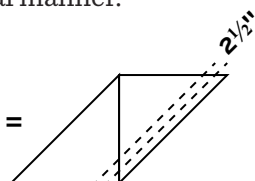
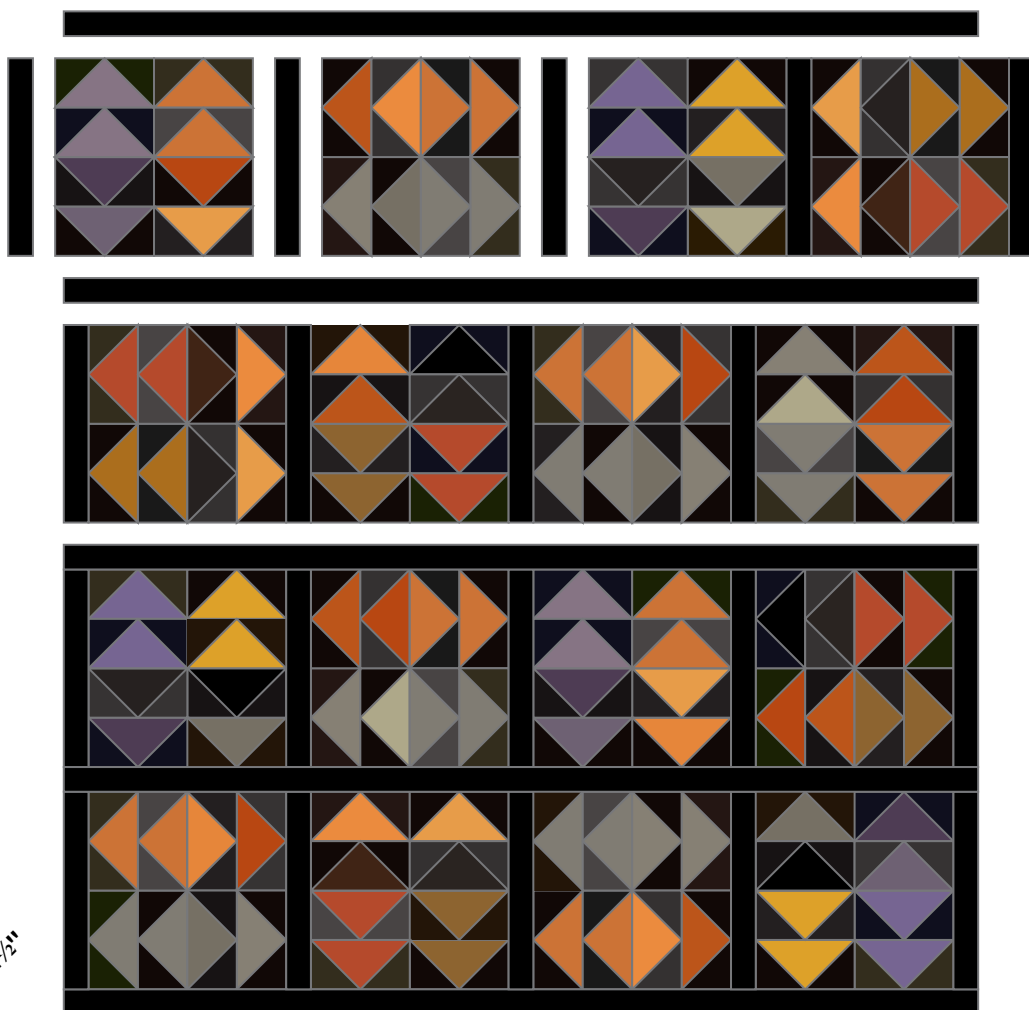


Diagram 4



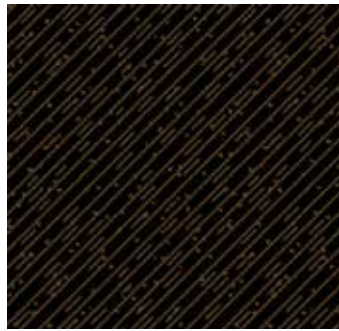
Quilt Diagram

# Midnight Magic

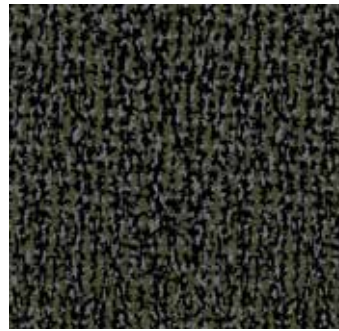
RENÉE NANNEMAN



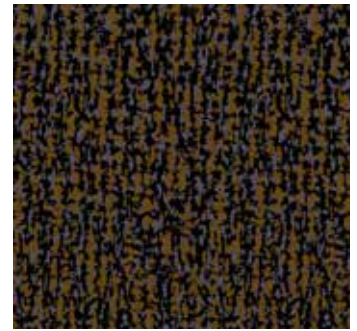
264-KC



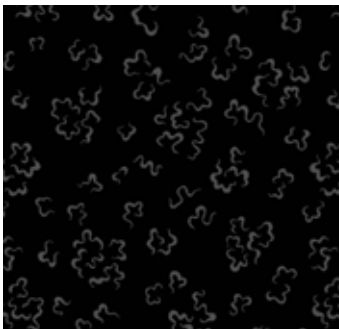
264-KN



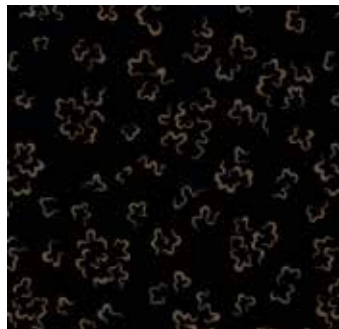
265-KC



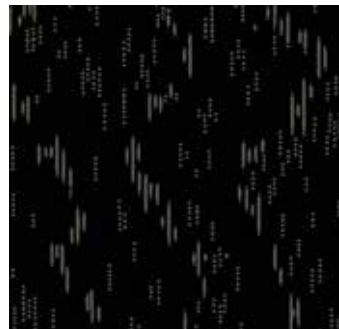
265-KN



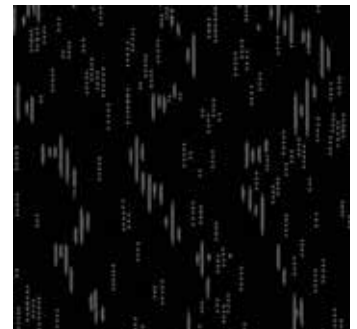
266-KC



266-KN



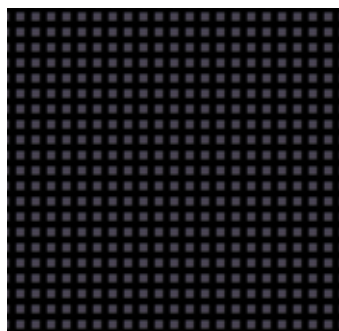
267-KC



267-KP



268-KC



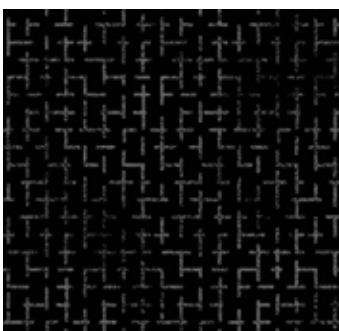
268-KP



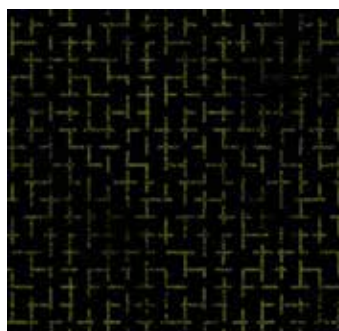
269-KC



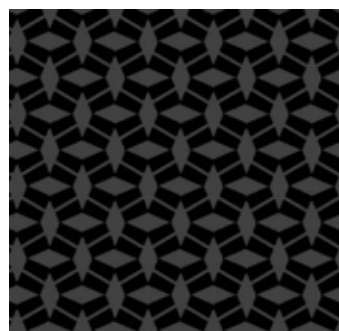
269-KN



270-KC



270-KG



271-KC



271-KN



CS-10-Black (10 yard bolts)  
(from Century Solids by Andover Fabrics)

All fabrics are used in quilt pattern. Fabrics shown are 100% of actual size.

See Fabric Requirements chart for list of Linen Textures fabrics used to make the quilt.

Free Pattern Download Available

1384 Broadway New York, NY 10018  
Tel. (800) 223-5678 • [andoverfabrics.com](http://andoverfabrics.com)

andover • [makower.uk](http://makower.uk)