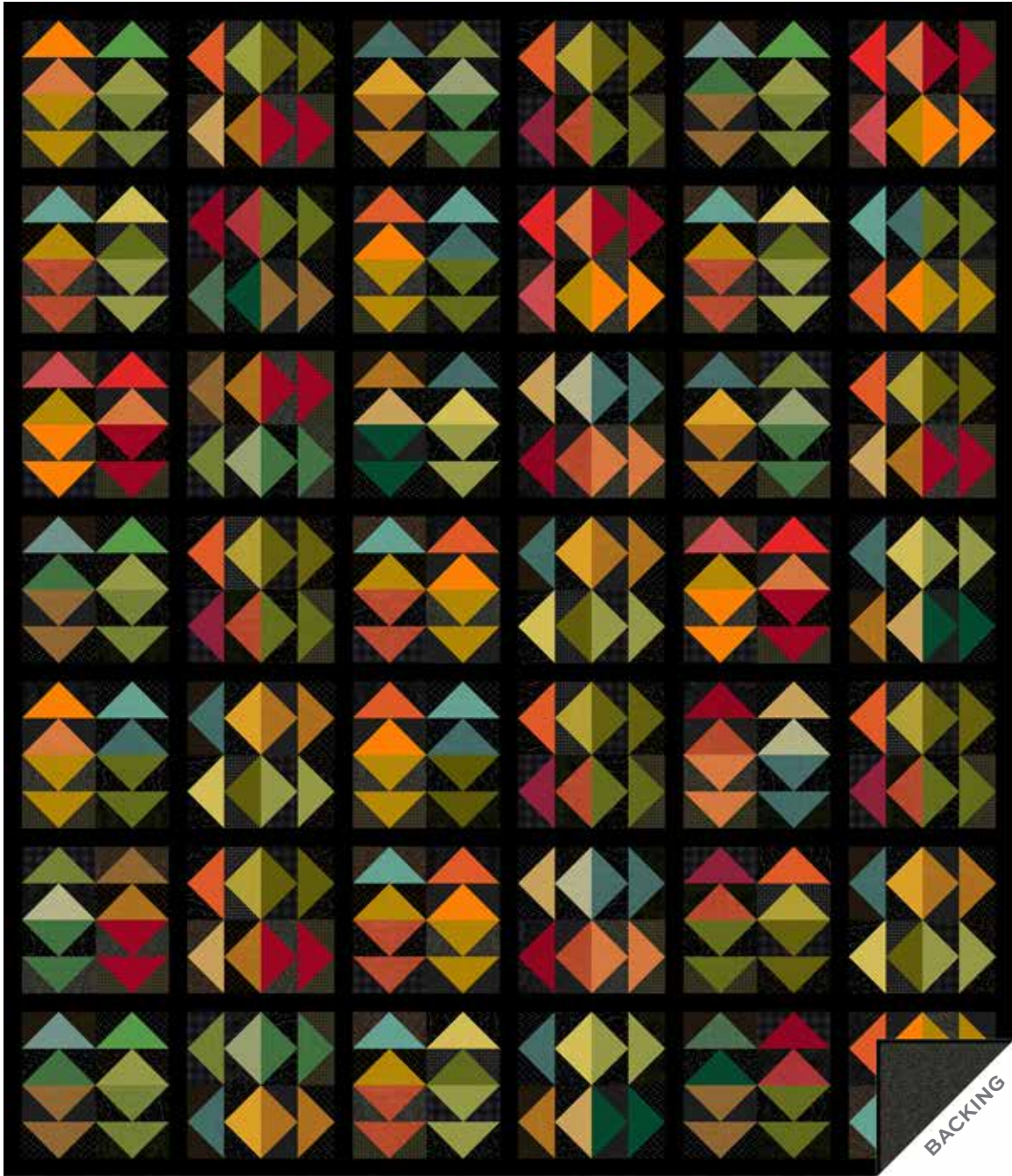


Midnight Magic

RENÉE NANNEMAN



100
years



Magic Carpet Ride Quilt designed by: **Renée Nanneman**

Quilt Size: **55" x 64"** • Skill Level: **Beginner**

andover



[makower uk](http://makower.uk)

Free Pattern Download Available

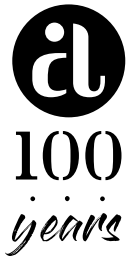
1384 Broadway New York, NY 10018
Tel. (800) 223-5678 • andoverfabrics.com

10/15/21

Magic Carpet Ride Quilt

Introducing Andover Fabrics new collection: **MIDNIGHT MAGIC** by Renée Nanneman

Quilt designed by Renée Nanneman



Quilt finishes 55" x 64"

42 Blocks: 8" x 8"

As pretty as an Arabian flying carpet fit for Aladdin, this multihued throw will transport you to sewing adventures. The scrappy black prints that surround the simple Flying Geese blocks add drama to the design.

Cutting Directions

Note: Read assembly directions before cutting patches. All measurements are cut sizes and include 1/4" seam allowances. A fat 1/8 is a 9" x 20"-22" cut of fabric. A fat 1/4 is an 18" x 20"-22" cut. Sashes are cut the exact lengths required plus 1/4" seam allowances. WOF designates the width of fabric from selvedge to selvedge (approximately 43" wide).

For ONE Flying Geese Block:

- 8 Black Prints From each, cut (2) squares 2 1/2"
- 2 Solids From each, cut (2) rectangles 2 1/2" x 4 1/2"
- 4 Solids From each, cut (1) rectangle 2 1/2" x 4 1/2"

For Quilt

Black Solid Cut (8) sashes 1 1/2" x 55 1/2", cut crosswise and pieced
Cut (49) sashes 1 1/2" x 8 1/2"

16 Black Prints From each:
Cut (42) squares 2 1/2" (672 total)

18 Solids From each:
Cut (6-12) rectangles 2 1/2" x 4 1/2"

13 Solids From each:
Cut (6-12) rectangles 2 1/2" x 4 1/2"

Note: Cut a total of 336 bright solid rectangles.

Binding Cut (7) strips 2 1/2" x WOF for binding

Backing Cut (2) panels 36" x 63", pieced to fit quilt top with overlap on all sides

Fabric Requirements

		Yardage	Fabric	
Black Solid	sashes	1 yard	CS-10 Black	
16 Black Prts.	blocks	fat 1/4 yard ea.		
	264-KC	264-KN	265-KC	265-KN
	266-KC	266-KN	267-KC	267-KP
	268-KC	268-KP	269-KC	269-KN
	270-KC	270-KG	271-KC	271-KN
From Linen Texture by Laundry Basket Quilts				
18 Solids	blocks	fat 1/8 yard each		
	9057-G	9057-G1	9057-G2	9057-G3
	9057-G4	9057-N	9057-O	9057-O1
	9057-O2	9057-R	9057-R1	9057-R2
	9057-T	9057-T1	9057-T2	9057-Y
	9057-Y1	9057-Y2		
From Linen Texture by Makower UK				
13 Solids	blocks	fat 1/8 yard each		
	1473-G4	1473-G5	1473-G6	1473-G7
	1473-G10	1473-N4	1473-N8	1473-Q5
	1473-R	1473-R4	1473-R7	1473-R8
	1473-Y7			
Binding		1/2 yard	CS-10 Black	
Backing		3 1/2 yards	265-KC	

- The quilt is made with easy Flying Geese units. With a white or yellow pencil, lightly draw a diagonal line on the wrong side of each black 2 1/2" square. Place a marked square on one end of a 2 1/2" x 4 1/2" rectangle, right sides together (Diagram 1). Sew on the marked line; trim away and discard excess fabric. Press open. Using the same black fabric for the second square, repeat this process on the opposite end of the rectangle (Diagram 2) to make a Flying Geese unit. Refer to the quilt photograph for color combinations, or combine the fabrics as you wish. Make 336 total Flying Geese units.

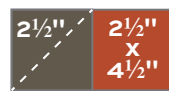


Diagram 1



Diagram 2

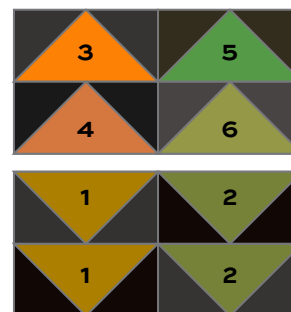


Flying Geese
Make 336

Magic Carpet Ride Quilt

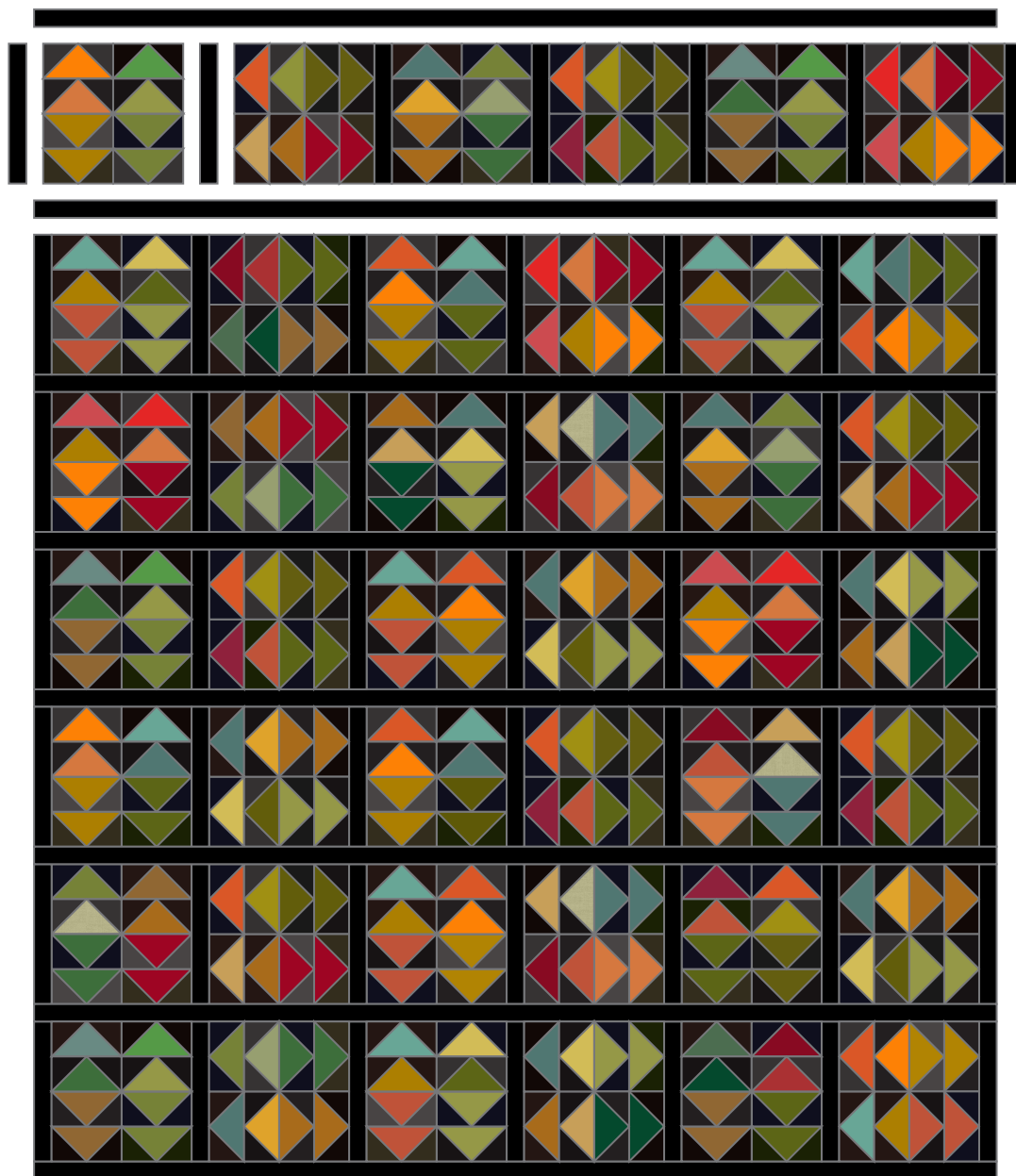


- Choose 2 Flying Geese made with the same solid fabrics but with different black prints. Choose another pair of Flying Geese with a second solid fabric and 2 more black prints. Choose 4 more Flying Geese with 4 different bright solids and 4 different black prints.
- Referring to the block diagram, arrange the Flying Geese into 4 rows, rotating them as shown. Take careful note of placement of the fabrics. Join the units to make a block. Make 42 blocks.
- Referring to the Quilt Diagram, arrange the blocks in 7 rows of 6 blocks each, rotating the blocks alternately as shown, again noting placement of the colors. Looking through a camera or the wrong end of binoculars may help you find mistakes.



Block – Make 42

- Position 7 short sashes between blocks and at ends of rows. Once you are satisfied with the arrangement, join the blocks and short sashes in rows. Finally, join the long black sashes between rows and at the top and bottom.



Quilt Diagram

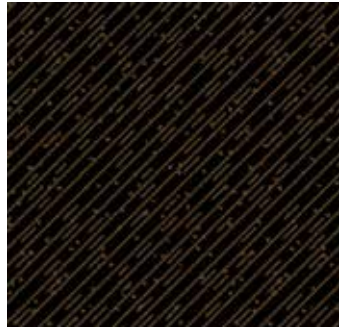
Finishing the Quilt

- Layer the quilt with batting and backing and baste. Quilt in the ditch around sashes and block patches. Quilt the bright triangles as you wish. Bind to finish the quilt.

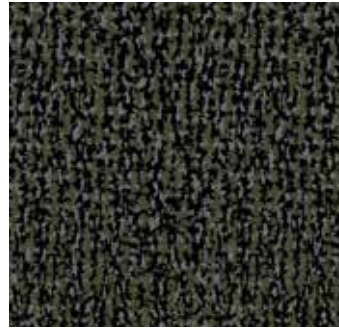
Midnight Magic RENÉE NANNEMAN



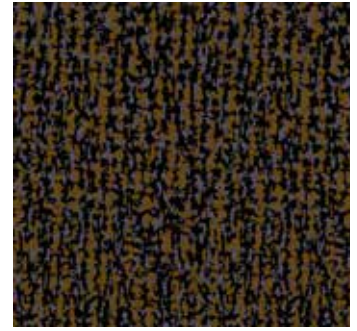
264-KC



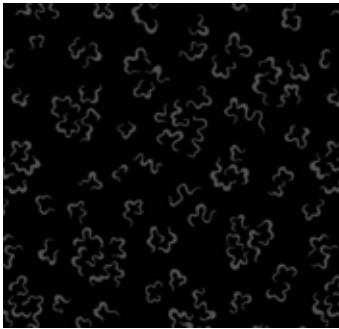
264-KN



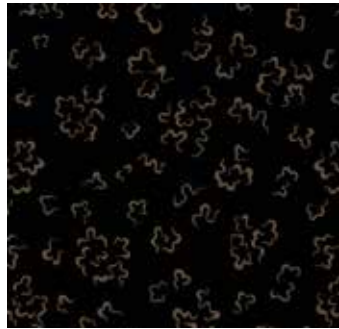
265-KC



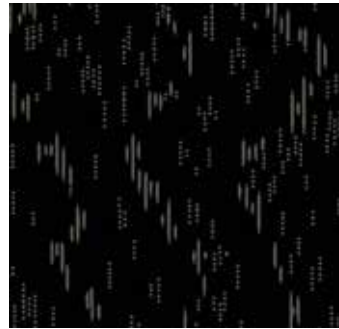
265-KN



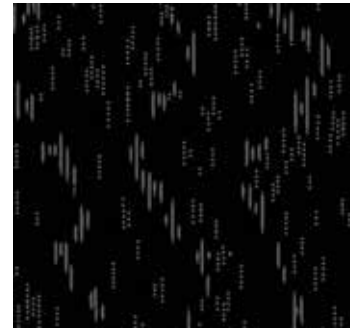
266-KC



266-KN



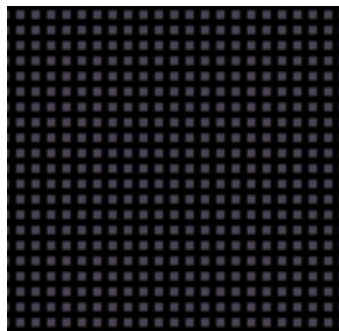
267-KC



267-KP



268-KC



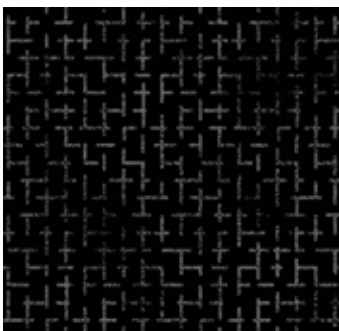
268-KP



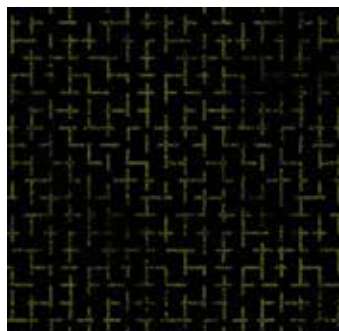
269-KC



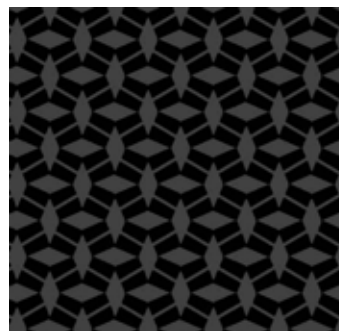
269-KN



270-KC



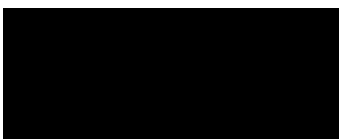
270-KG



271-KC



271-KN



CS-10-Black
(from Century Solids by Andover Fabrics)

All fabrics are used in quilt pattern. Fabrics shown are 100% of actual size.

See Fabric Requirements chart for list of Linen Textures fabrics used to make the

Free Pattern Download Available

1384 Broadway New York, NY 10018
Tel. (800) 223-5678 • andoverfabrics.com