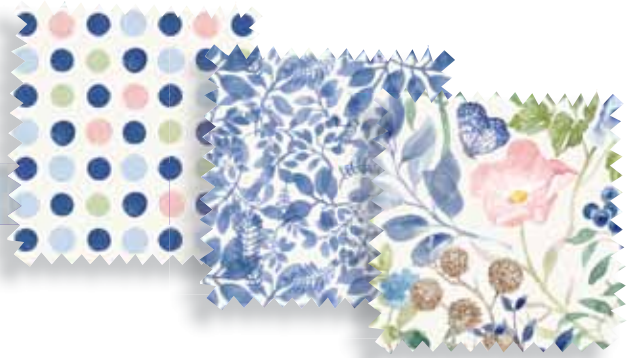


# Indigo Petals

Quilt Design by Cyndi Hershey



Quilt size: approximately 49" x 55"



Featuring fabrics from *Indigo Petals* by Beth Grove  
for P&B Textiles



P&B Textiles • [pbtex.com](http://pbtex.com) • 800-351-9087 • 208 Clock Tower Square, Portsmouth, RI 02871

# Indigo Petals

Fabric collection by Beth Grove for P&B Textiles

Quilt designed by Cyndi hershey

Skill level: Confident Beginner • Finished Quilt Size: approx. 49" x 55"

## Quilt Yardages:

Fabric A: <b>IPET 4978 E</b>	1 1/4 yards
Fabric B: <b>IPET 4978 N</b>	1 yard
Fabric C: <b>IPET 4980 P</b>	1/8 yard
Fabric D: <b>IPET 4981 B</b>	7/8 yard
Fabric E: <b>IPET 4981 N</b>	5/8 yard
Fabric F: <b>IPET 4982 B</b>	1 1/8 yards
Fabric G: <b>IPET 4983 MU</b>	1/3 yard
Backing: <b>IPET 4977 MU suggested</b>	3 1/4 yards
Batting	57" x 63"

Additional supplies: Plastic or freezer paper to create Dresden Petal Block template/s. Paper-backed fusible web such as Heat & Bond Light. Water soluble glue stick or glue pen such as Roxanne Glue Baste-It.

## Cutting Instructions:

*PLEASE READ ALL INSTRUCTIONS CAREFULLY BEFORE BEGINNING. Strips are cut across the width of fabric (perpendicular to selvages) unless otherwise stated. All seams are sewn with a 1/4" seam unless otherwise stated. Label all pieces.*

### From Fabric A:

1. Cut three 5 1/2" strips; subcut four 5 1/2" squares, four 5 1/2" x 9" rectangles, and two 5 1/2" x 12 1/2" rectangles. (Center Block)
2. Cut one 9" strip; subcut two 9" x 12 1/2" rectangles. (Center Block)
3. Cut two 5 1/2" strips. Use template to cut sixteen petal shapes. Flip-flop template across strip to maximize fabric use. (Dresden Petal Blocks)

### From Fabric B:

1. Cut three 5 1/2" strips. Use template to cut twenty petal shapes. Flip-flop templates across strip to maximize fabric use. (Dresden Petal Blocks)
2. Cut nine 1 1/4" strips. Use two strips to cut two 1 1/4" x 38" strips. Sew remaining strips together end to end with diagonal seams. Trim seams and press open. From this pieced strip, cut two 1 1/4" x 41 1/2" strips, two 1 1/4" x 42 1/2" strips, and two 1 1/4" x 46" strips. (1st & 3rd Border)

### From Fabric C:

1. Use template to cut twelve quarter-circles for block centers. (Dresden Petal Blocks)

### From Fabric D:

1. Cut four 6 1/2" strips; subcut twelve 6 1/2" squares, two 6 1/2" x 12 1/2" rectangles, and two 6 1/2" x 18 1/2" rectangles. (Dresden Petal Border)

### From Fabric E:

1. Cut one 1 1/2" strip; subcut six 1 1/2" squares. (Center Block)
2. Cut six 2 1/2" strips. (Binding)

### From Fabric F:

1. Cut four 1 1/2" strips; subcut ten 1 1/2" x 5 1/2" strips, four 1 1/2" x 9" strips, and three 1 1/2" x 12 1/2" strips. (Center Block)
2. Cut six 4 1/2" strips. Sew strips together end to end with diagonal seams. Trim seams and press open. From this pieced strip, cut two 4 1/2" x 47 1/2" strips and two 4 1/2" x 49 1/2" strips. (Outer Border)

### From Fabric G:

1. Cut five 1 1/2" strips. Use two strips to cut two 1 1/2" x 40" strips. Sew remaining strips together end to end with diagonal seams. Trim seams and press open. From this pieced strip, cut two 1 1/2" x 44" strips. (2nd Border)

## Piecing Instructions:

### Center Block

1. Sew together into a row: two 5 1/2" A squares, two 1 1/2" x 5 1/2" F strips, and one 5 1/2" x 12 1/2" A rectangle. Press toward the F strips. Repeat to make Rows 1 & 4. (Figure 1)



Figure 1

### Make 2. 5 1/2" x 24 1/2" unfinished

2. Sew together into a row: two 5 1/2" x 9" A rectangles, two 1 1/2" x 9" F strips, and one 9" x 12 1/2" A rectangle. Press toward the F strips. Repeat to make Rows 2 & 3. (Figure 2)

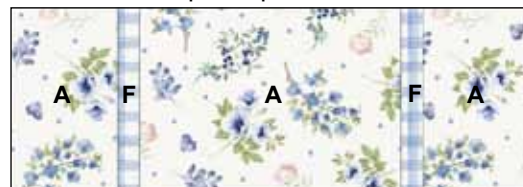


Figure 2

### Make 2. 9" x 24 1/2" unfinished

3. Sew together into a row: two 1 1/2" x 5 1/2" F strips, two 1 1/2" E squares, and one 1 1/2" x 12 1/2" F strip. Press toward the F strips. Repeat to make three horizontal sashing rows. (Figure 3)

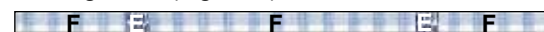


Figure 3

### Make 3. 1 1/2" x 24 1/2" unfinished



- Sew Rows 1- 4 alternately with Horizontal Sashing Rows to complete Center Block. Press. (Figure 4)



Figure 4

**Make 1. 24 1/2" x 30 1/2" unfinished**

#### Dresden Petal Blocks & Border

- Sew together one A and two B petals along long sides of A petal. Press seams open. Place petal unit on right side of one 6 1/2" D square aligning outer edges. Pin in place. Use glue stick or pen to lightly adhere raw edges of petal tops to D square.
- Place one C quarter-circle on top of Step 1 block aligning raw edges. Use glue stick or pen to lightly adhere raw edges of quarter-circle to petal unit. Repeat to make eight B-A-B petal blocks. (Figure 5)

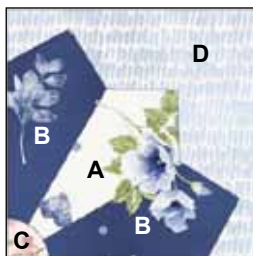


Figure 5

**Make 8.  
6 1/2" x 6 1/2" unfinished**

- Repeat Steps 1 and 2 using two A petals and one B petal for each block. Repeat to make four A-B-A blocks. (Figure 6)

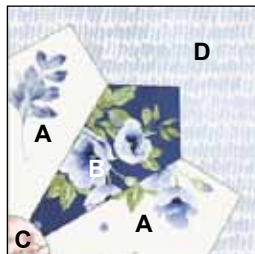


Figure 6

**Make 4.  
6 1/2" x 6 1/2" unfinished**

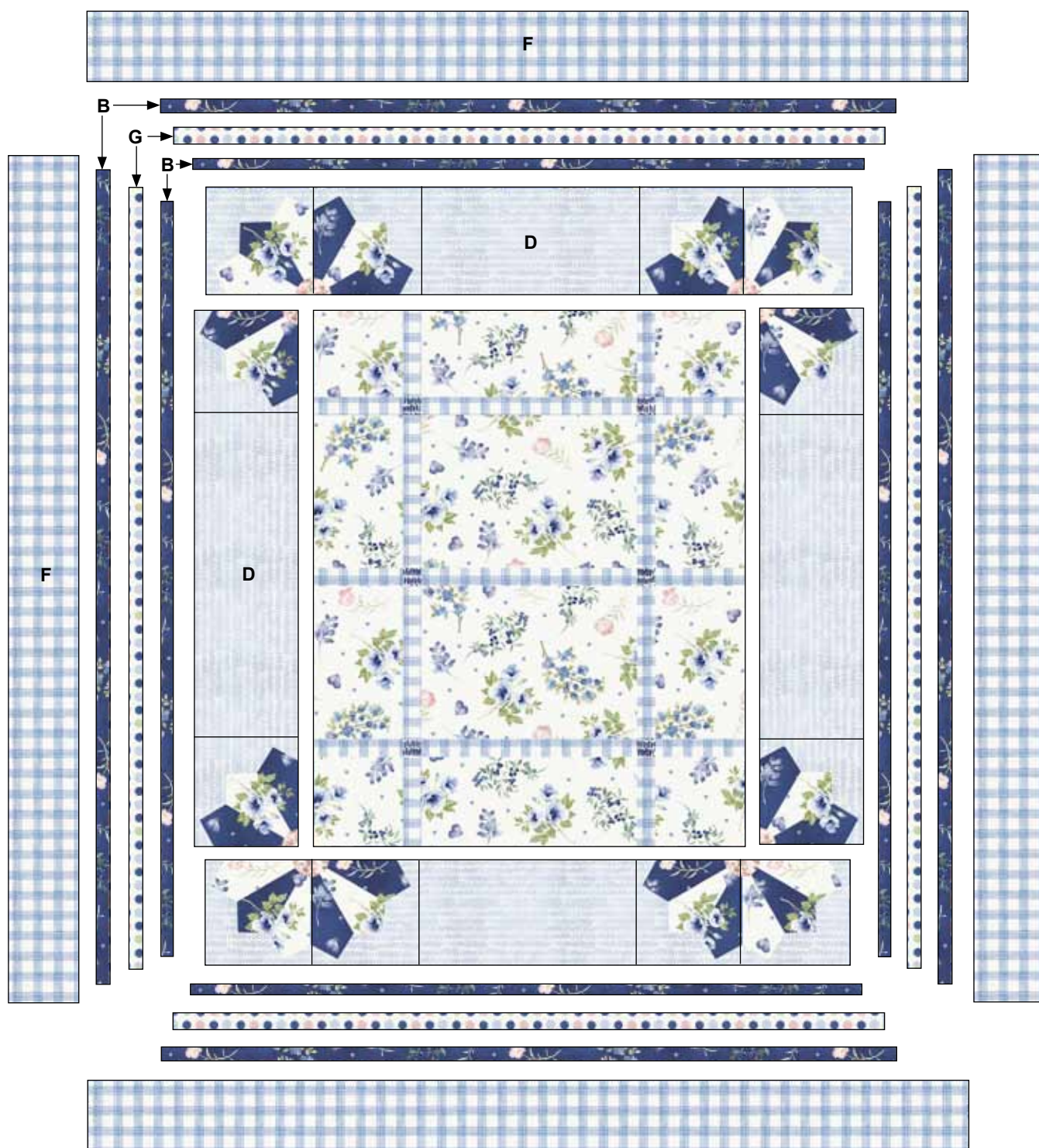
- Sew together two B-A-B Blocks alternately with one 6 1/2" x 18 1/2" D rectangle. Press seams open. Repeat. Sew one border to each side of the Center Block. Press seams open.
- Sew together two A-B-A Blocks, two B-A-B Blocks, and one 6 1/2" x 12 1/2" D rectangle. Press seams open. Repeat. Sew one border to the top and bottom of the Center Block. Press seams open. Make one. 36 1/2" x 42 1/2" unfinished. (Quilt Diagram)
- Use threads of choice and narrow zigzag stitch (or buttonhole stitch) to stitch raw edges of petal tops as well as top of quarter-circles. Stitching after blocks have been sewn to Center Block allows for smooth, continuous stitching of raw edges. It also helps to disguise any areas where raw edges may not be perfectly aligned.

#### Quilt Assembly: Refer to Quilt Diagram.

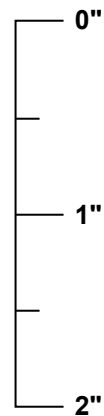
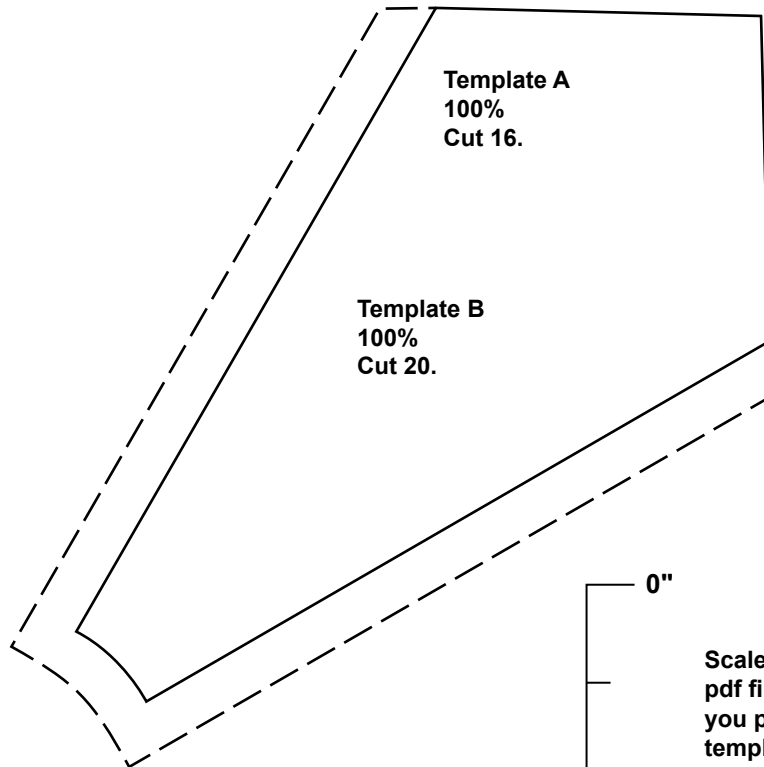
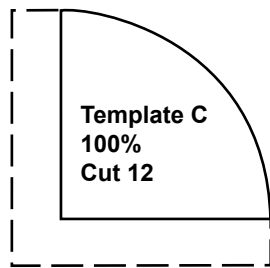
- Sew one 1 1/4" x 42 1/2" B strip to both sides of the quilt; press. Sew one 1 1/4" x 38" B strip to the top and bottom of the quilt; press.
- Sew one 1 1/2" x 44" G strip to both sides of the quilt; press. Sew one 1 1/2" x 40" G strip to the top and bottom of the quilt; press.
- Sew one 1 1/4" x 46" B strip to both sides of the quilt; press. Sew one 1 1/4" x 41 1/2" B strip to the top and bottom of the quilt; press.
- Sew one 4 1/2" x 47 1/2" F strip to both sides of the quilt; press. Sew one 4 1/2" x 49 1/2" F strip to the top and bottom of the quilt; press.

#### Finishing:

- Prepare backing using two widths with a horizontal seam. Press seam open. Trim to 57" x 63".
- Layer quilt top, batting, and backing. Baste layers together.
- Quilt as desired.
- Trim layers even with quilt top squaring corners.
- Join six 2 1/2" E binding strips with diagonal seams. Press seams open. Attach binding using your favorite method
- Make a label and sew to the back of the quilt.



*Quilt Diagram*



Scale Check for pdf files. When you print these templates, this ruler should measure 2 inches long. If it does not, change, "page scaling" to "none" in the print dialog box.



# Indigo Petals

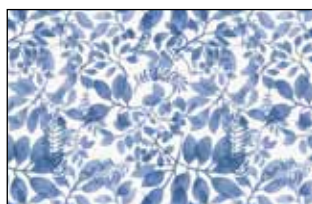
Fabric Collection by Beth Grove for P&B Textiles



IPET 4977 MU†



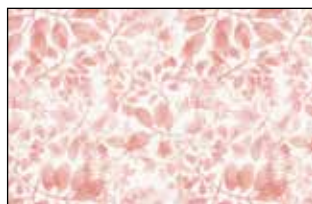
IPET 4978 E\*



IPET 4979 B



IPET 4979 G



IPET 4979 P



IPET 4980 B



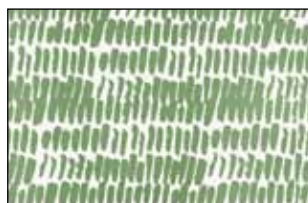
IPET 4978 N\*



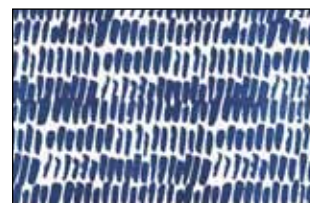
IPET 4980 P\*



IPET 4981 B\*



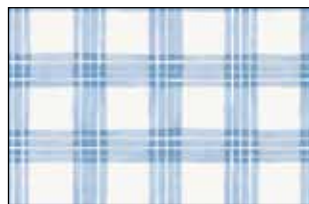
IPET 4981 G



IPET 4981 N\*



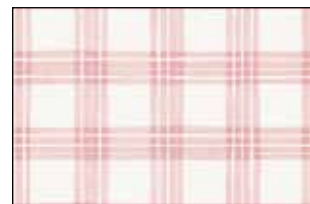
IPET 4981 P



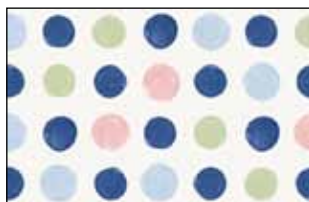
IPET 4982 B\*



IPET 4982 G



IPET 4982 P



IPET 4983 MU\*

\*Fabrics used in quilt

†Backing

