

Misty Morning

ANDOVER FABRICS

a
100
years



Morning Dew Quilt designed by: **Janet Houts**

Quilt Size: **52" x 52"** • Skill Level: **Intermediate / Advanced**

andover

•
•
• [makower uk](http://makower.uk)
•

Free Pattern Download Available

1384 Broadway New York, NY 10018
Tel. (800) 223-5678 • andoverfabrics.com

12/15/21

Morning Dew Quilt

Introducing Andover Fabrics new collection: **MISTY MORNING** by Andover Fabrics

Quilt designed by Janet Houts



Quilt finishes 52" x 52"

This original medallion quilt with multiple stars is made with easy Flying Geese and half-square triangle piecing techniques. What a spectacular wall quilt with a neutral color palette that will fit into nearly any color décor.

Fabric Requirements

		Yardage	Fabric
Fabric A	blocks	fat 1/8	307-C
Fabric B	border	fat 1/8	308-C
Fabric C	blocks	3/8 yard	309-C
Fabric D	setting	3/8 yard	310-C
Fabric E	blocks	fat 1/8	311-C
Fabric F	border	3/4 yard	312-C
Fabric G	blocks	fat 1/4	313-C
Fabric H	blocks	fat 1/4	314-C
Fabric I	setting	3/8 yard	315-C
Fabric J	setting	3/8 yard	316-C
Fabric K	setting	fat 1/8	317-C
Fabric L	blocks	fat 1/4	318-C
Fabric M	border	1/4 yard	319-C
Fabric N	setting	3/8 yard	320-C
Fabric O	setting	3/8 yard	321-C
Fabric P	blocks	1/2 yard	322-C
Binding		1/2 yard	317-C
Backing		3 1/2 yards	322-C

Cutting Directions

Note: Read assembly directions before cutting patches. All measurements are cut sizes and include 1/4" seam allowances. A fat 1/8 is a 9" x 20"-22" cut of fabric. A fat 1/4 is an 18" x 20"-22" cut. Borders are cut the exact lengths required plus 1/4" seam allowances. WOF designates the width of fabric from selvedge to selvedge (approximately 43" wide).

Fabric A Cut (8) squares 3 1/2" for Flying Geese #1 (F.G.)
Cut (4) rectangles 2" x 3 1/2" for Star #1
Cut (4) squares 2" x 2" for Star #1

Fabric B Cut (4) squares 3 1/2"
Cut (4) squares 3 7/8" (4") for half-square triangles (HST #1)
Read Step 1 before cutting.

Fabric C Cut (16) rectangles 2" x 3 1/2" for Star #3
Cut (16) squares 2" for Star #3
Cut (16) squares 3 1/2" for F.G. #4
Cut (8) squares 3 1/2" for Pieced Square

Fabric D Cut (8) rectangles 3 1/2" x 6 1/2" for F.G. #2
Cut (4) squares 3 1/2"
Cut (4) squares 3 7/8" (4") for HST #1

Fabric E Cut (1) square 3 1/2" for Star #1
Cut (8) squares 2" for Star #1

Fabric F Cut (5) strips 4 1/2" x WOF, pieced to make the following:
(2) borders 4 1/2" x 52 1/2"
(2) borders 4 1/2" x 42 1/2"

Fabric G Cut (4) squares 3 1/2" for Star #2
Cut (32) squares 2" for Star #2

Fabric H Cut (16) rectangles 2" x 3 1/2" for Star #2
Cut (16) squares 2" for Star #2

Fabric I Cut (8) rectangles 3 1/2" x 6 1/2" for F.G. #1 & #3
Cut (16) squares 3 1/2" for F.G. #2

Fabric J Cut (8) rectangles 3 1/2" x 6 1/2" for F.G. #4
Cut (16) squares 3 1/2" for F.G. #5

Fabric K Cut (8) squares 3 1/2" for F.G. #3

Fabric L Cut (4) squares 3 1/2" for Star #3
Cut (32) squares 2" for Star #3

Fabric M Cut (5) strips 1 1/2" x WOF, pieced to make the following:
(2) borders 1 1/2" x 44 1/2"
(2) borders 1 1/2" x 42 1/2"

Fabric N Cut (8) rectangles 3 1/2" x 6 1/2" for F.G. #5
Cut (12) squares 3 7/8" (4") for HST #2
Cut (12) squares 3 1/2"

Fabric O Cut (12) squares 3 7/8" (4") for HST #2
Cut (12) squares 3 1/2"

Fabric P Cut (8) squares 6 1/2" for Pieced Square

Binding Cut (6) strips 2 1/2" x WOF for binding

Backing Cut (2) panels 30" x 60", pieced to fit quilt top with overlap on all sides

Making the Quilt

1. The quilt uses half-square triangles (HST) that finish 3" square. Cut squares 4" for HST that will be trimmed after stitching. If you prefer not to trim, cut squares 3⁷/₈". Draw a diagonal line on the wrong side of each Fabric B square. Place a marked square on a Fabric D square, right sides together. Sew 1/4" seam on each side of the marked line (Diagram 1). Cut apart on the marked line. Press open to make pieced HST #1. Make 8. Likewise, make 24 HST #2 with Fabrics N and O. Set HST aside.

2. Refer to Diagram 2. Draw a diagonal line on the wrong side of each Fabric C 3¹/₂" square. Place a marked square on a Fabric P 6¹/₂" square, right sides together, aligning raw edges at one corner. Stitch on the drawn line; trim away and discard excess fabric. Press open. Make 8 Pieced Squares. Set aside.

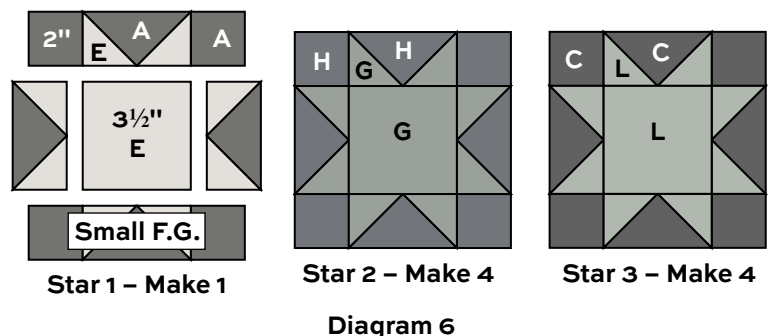
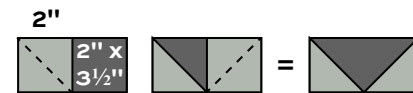
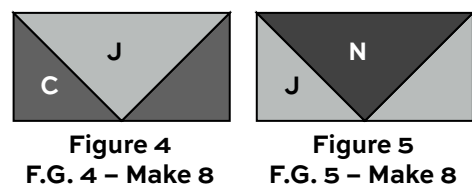
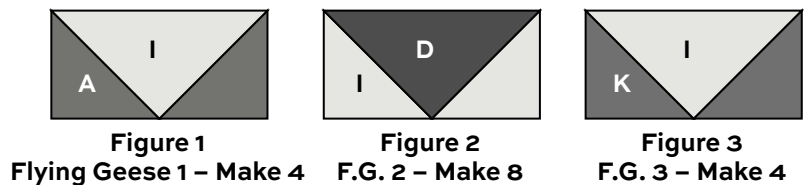
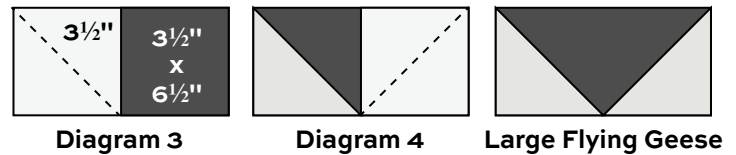
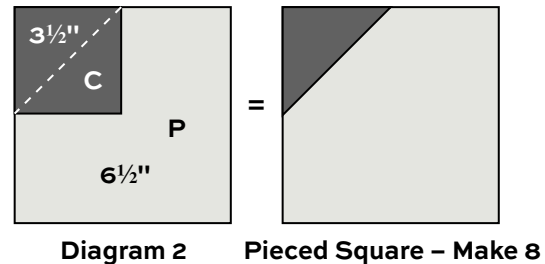
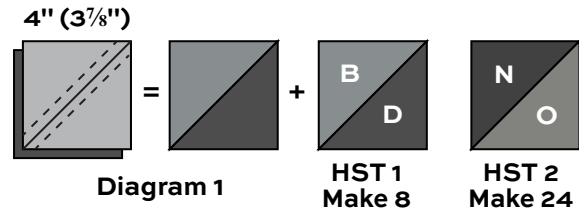
3. Flying Geese are used in many places in the quilt. Refer to Diagram 3. Draw a diagonal line on the wrong side of the appropriate 3¹/₂" squares. Place a marked square on one end of the appropriate 3¹/₂" x 6¹/₂" rectangle, right sides together. Sew on the marked line; trim away and discard excess fabric from the corner. Press open. Repeat this process on the opposite end of the rectangle (Diagram 4). Make the number of Flying Geese as shown in the diagrams. Set aside.

4. The 9 Star blocks are made with small Flying Geese. Refer to Diagram 5, and follow the directions in Step 3 to make 8 Small flying Geese for each star. Refer to the diagrams for fabric combinations and number needed of each star.

5. Join the patches and small Flying Geese to make each star (Diagram 6).

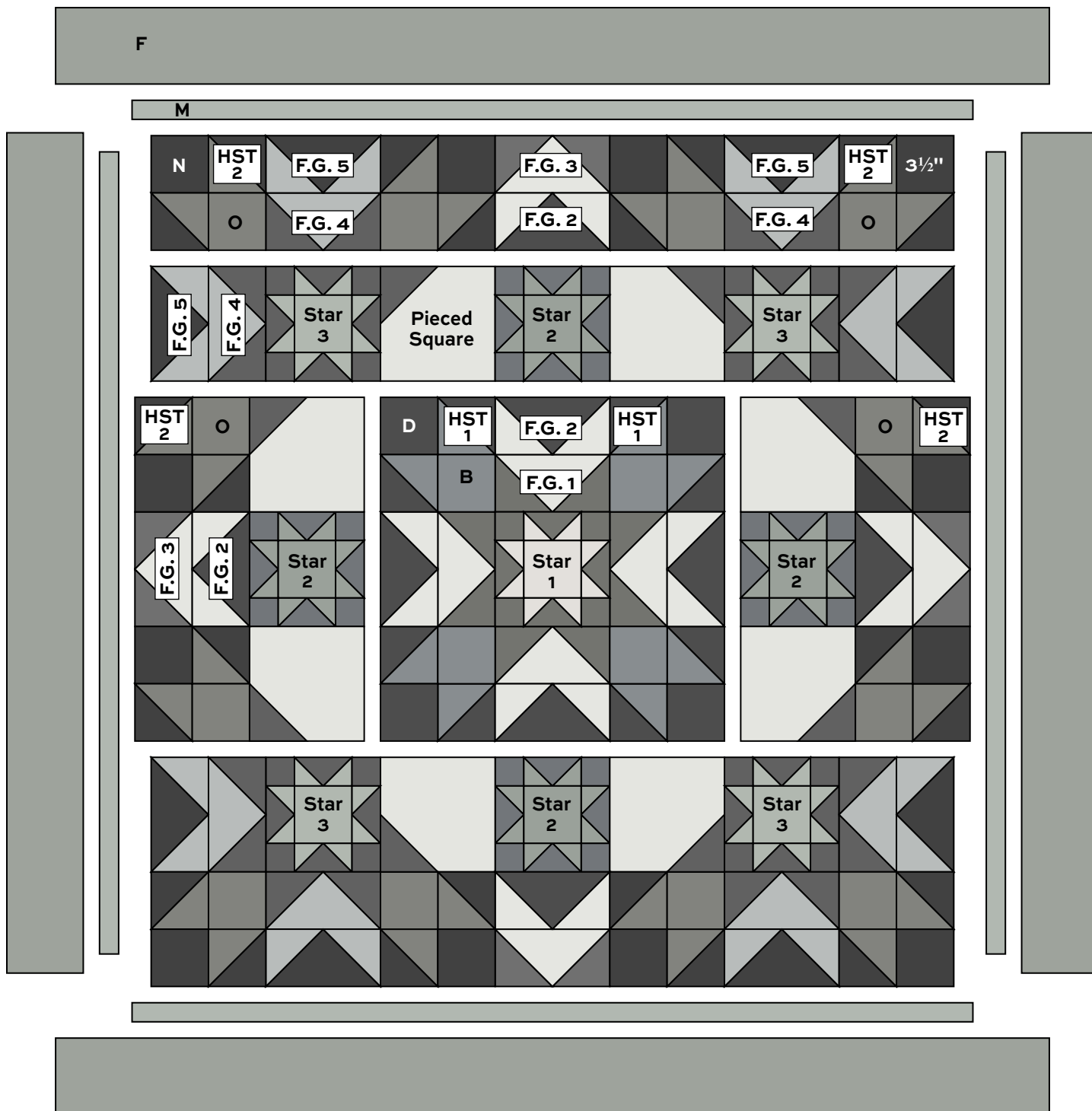
6. The Quilt Diagram looks complicated, but if you take it step by step, you will soon have the design in place. Arrange the various Flying Geese, HST, Star blocks, Pieced Squares, and other patches into rows and units. Looking through a camera or the wrong end of binoculars may help you find mistakes. Once you are satisfied with the arrangement, join the various parts into rows and units. Finally, join the units to make the quilt.

7. Sew Fabric M borders to the sides, and then to the top and bottom. Join Fabric F borders in the same order.



Finishing the Quilt

8. Layer the quilt with batting and backing and baste. Quilt in the ditch around borders and patches. Quilt the Pieced Squares, larger patches, and outer border as you wish. Bind to finish the quilt.



Quilt Diagram

Misty Morning

ANDOVER FABRICS

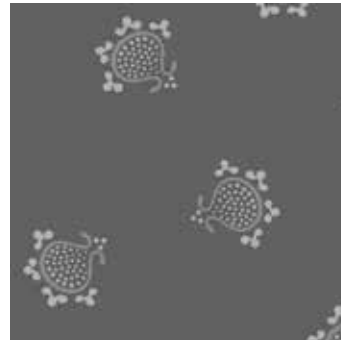
a
100
years



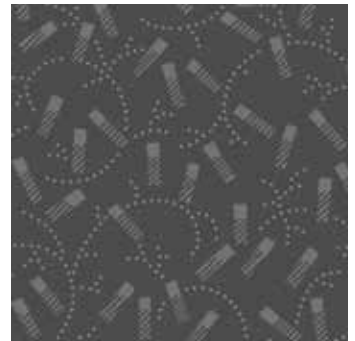
307-C



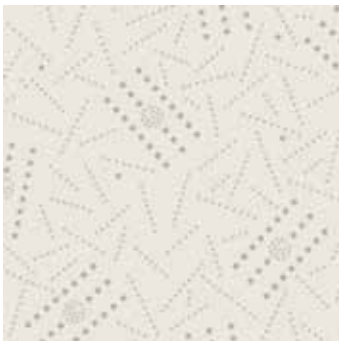
308-C



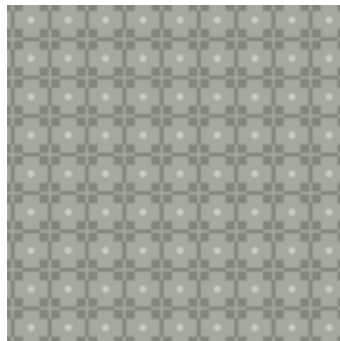
309-C



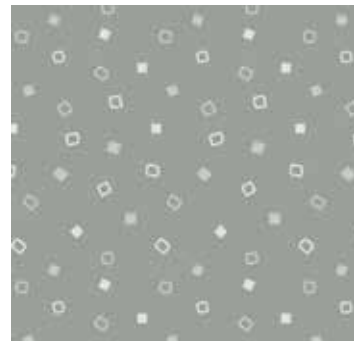
310-C



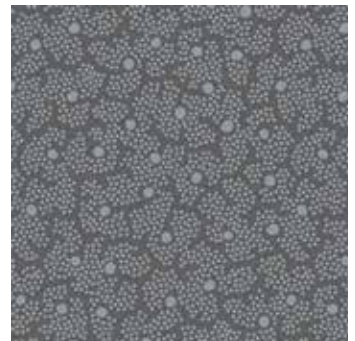
311-C



312-C



313-C



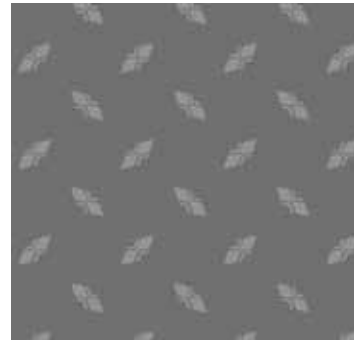
314-C



315-C



316-C



317-C



318-C



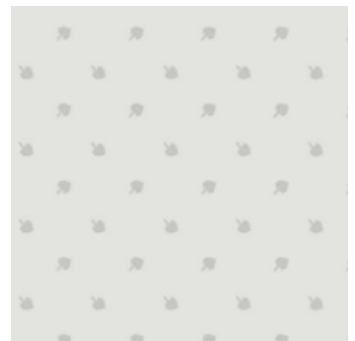
319-C



320-C



321-C



322-C

All fabrics are used in quilt pattern. Fabrics shown are 100% of actual size.

andover • makower.uk

Free Pattern Download Available

1384 Broadway New York, NY 10018
Tel. (800) 223-5678 • andoverfabrics.com

12/15/21