

MAYWOOD  STUDIO

FOREST CHATTER REVERSIBLE QUILT



Forest Chatter Reversible Quilt by Maywood Studio

Featuring the Forest Chatter collection from Maywood Studio.

58½" x 65½"

maywoodstudio.com

FOREST CHATTER

WORKSHOP



Fabric 1
10297-E



Fabric 2
10297-M



Fabric 3
10297-Q



Fabric 4
10296-Q



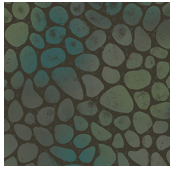
Fabric 5
10292-BZ



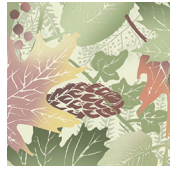
Fabric 6
10295-Q



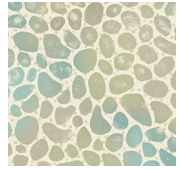
Fabric 7
10298-B



Fabric 8
10300-Q



Fabric 9
10294-E



Fabric 10
10300-E



Fabric 11
10294-G



Fabric 12
10298-C



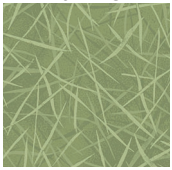
Fabric 13
10296-B



Fabric 14
10296-M



Fabric 15
10297-O



Fabric 16
10299-G



Fabric 17
10296-E



Fabric 18
10298-T

Fabric requirements are for a reversible quilt. If you would like to make two separate quilts you will need to buy additional backing and binding.

Day
10290-EZ



Night
110290-MZ



MAYWOOD  STUDIO

Maywood Studio makes every effort to make sure our patterns are accurate.
Check for updates at maywoodstudio.com/projects

Fabric Requirements

Fabric 1	10297-E	2 yards
Fabric 2	10297-M	3/8 yard
Fabric 3	10297-Q	2-1/2 yards
Fabric 4	10296-Q	1/2 yard
Fabric 5	10292-BZ	F8
Fabric 6	10295-Q	F8
Fabric 7	10298-B	F8
Fabric 8	10300-Q	F8
Fabric 9	10294-E	F8
Fabric 10	10300-E	F8
Fabric 11	10294-G	F8
Fabric 12	10298-C	F8
Fabric 13	10296-B	3/4
Fabric 14	10298-T	FQ
Fabric 15	10296-E	FQ
Fabric 16	10296-M	FQ
Fabric 17	10297-O	FQ
Fabric 18	10299-G	FQ
Day	10290-EZ	1 panel
Night	10290-MZ	1 panel

Cut Sizes:

F8 - Fat Eighth 9" x 22"
 FQ - Fat Quarter: 18" x 20"

WOF - Width of Fabric
 LOF - Length of Fabric
 RST - Right Sides Together
 HST - Half Square Triangle

Note: The Night Forest Chatter quilt top takes the place of a backing for this project. The borders will be wider than the Day Forest Chatter quilt top.

Cutting

Quilt: 58-1/2" x 65-1/2"
Fussy Cut Panels 35" x 42"

Fabric 1 - Cream Stars

Cut (4) 4-1/2" x WOF strips into
 (8) 4-1/2" squares
 (2) 4-1/2" x 7" rectangles
 (2) 4-1/2" x 14-1/2" rectangles
 (2) 4-1/2" x 15" rectangles
 (2) 4-1/2" x 22-1/2" rectangles
 Cut (5) 5-1/2" x WOF strips into
 (32) 5-1/2" squares

Inner Borders

(2) 2-1/2" x 39" inner top/bottom border
 (2) 2-1/2" x 42" inner side borders

Outer Borders:

Cut (7) 2" x WOF Strips. Sew end to end and cut into
 (2) 2" x 58-1/2" outer top/bottom border
 (2) 2" x 62-1/2" outer side borders

Fabric 2 - Brown Stars

(2) 2-1/2" x 39" inner top/bottom borders
 (2) 2-1/2" x 42" inner side borders

Fabric 3 - Blue Stars

(20) 4-1/2" squares
 (22) 5-1/2" squares
 (4) 7-1/4" x 8-1/2" rectangles
 (4) 3-3/4" x 8-1/2" rectangles
 Cut (7) 6" x WOF strips. Sew end to end and cut into:
 (2) 6" x 62" side borders
 (2) 6" x 66" top/bottom borders

Fabric 4 - Blue Flowers

Cut (1) 5-1/2" x WOF strip into
 (2) 5-1/2" squares
 (20) 4-1/2" squares

Fabrics 5, 6, 7, 8, 9, 10, 11, 12

From each F8 cut (2) 5-1/2" squares

Fabrics 14, 15, 16

From each FQ Cut (6) 5-1/2" squares

Fabric 13 *Cut binding strips first

Cut (7) 2-1/4" x WOF strips for binding
 Cut (6) 5-1/2" squares

Fabrics 17 and 18

From each FQ Cut (4) 5-1/2" squares

Forest Chatter Reversible Quilt Instructions

Please read all instructions before you begin. Seam allowance is 1/4. Fabric is abbreviated as 'F' - for example, F1 refers to Fabric 1. Press in the direction of arrows.

Panels

1. Fussy cut the Day and the Night Forest Chatter panels to 35" x 42".

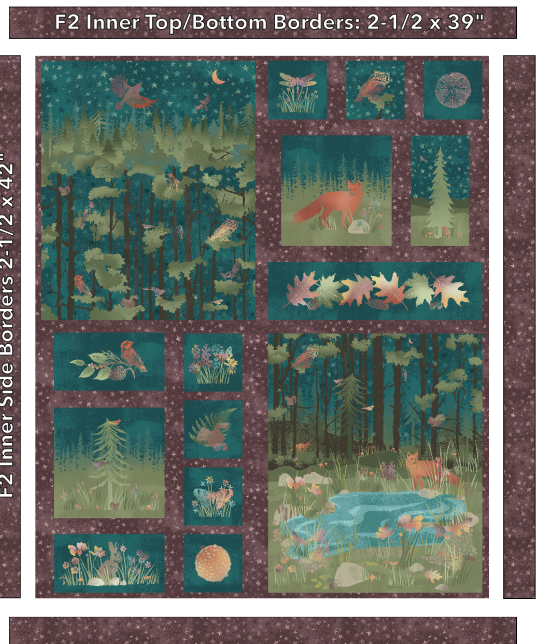
Day Panel

2. Sew the (F1) inner side borders to the sides of the panel. Press toward F1.

3. Sew the F1 inner top and bottom borders to the panel. Press toward F1.

4. Repeat steps 1 and 2 with the Night Panel and the F2 inner border strips.

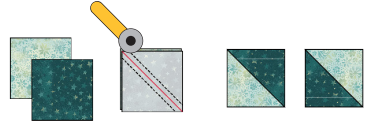
Tip: Pin the borders to the panels starting at the center and pinning out to the edge.



Partial Star Blocks

Make 2 at a Time Half Square Triangles (HST)

1. Draw a diagonal line from corner to corner on the wrong side of (10) 5-1/2" F3 squares.



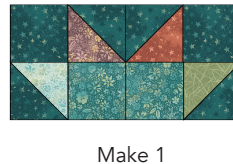
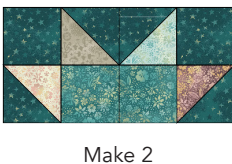
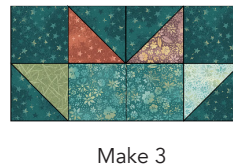
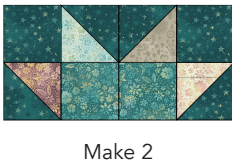
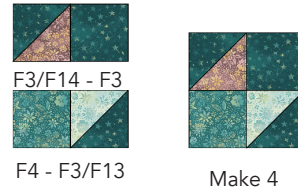
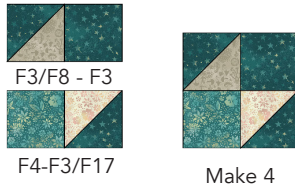
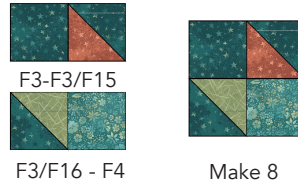
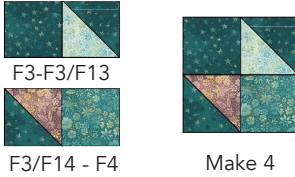
2. Place an F3 square RST, over a 5-1/2" F13 square. Sew 1/4" away from either side of the marked line. Cut on the marked line. Press toward F3. Trim both pieces to 4-1/2" square. Make 4 for a total of 8 HSTs. Repeat for the following combinations: F3/F14, F3/F16, and F3/F15.



3. Make 2 sets of each of the HSTs using the illustrations to the right for a total of 4 for the F3/F8 and F3/F17 combinations.

4. Gather (20) 4-1/2" F3 and F4 squares. Sew into the 4 patch units illustrated below. Press to nest.

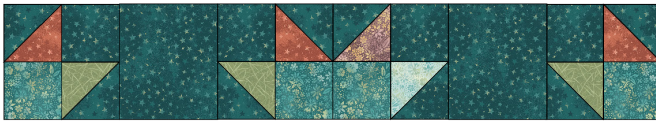
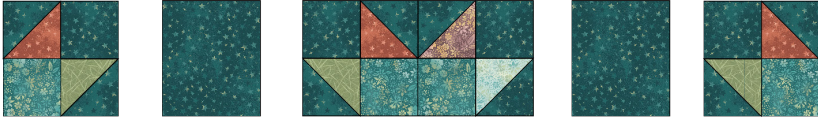
5. Sew the 4 patch units into the Partial Star Blocks as illustrated below. Press open.



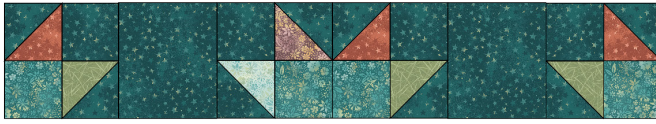
Partial Star Rows and Outer Borders

Side Partial Star Rows

1. Gather (2) F3/F15/F16 partial stars, (2) F3 7- $\frac{1}{4}$ "x 8- $\frac{1}{2}$ " rectangles and (1) F3/F13/F14/F15/F16 half star block. Sew them into a row as illustrated below. Press.
2. Repeat step one, but flipping the half star to be a mirror image.



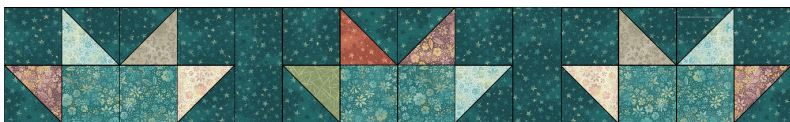
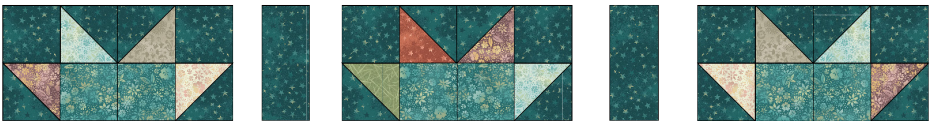
Make 1



Make 1

Top/Bottom Partial Star Rows

1. Gather the remaining half star blocks and (4) F3 3- $\frac{3}{4}$ "x 8- $\frac{1}{2}$ " rectangles. Sew them into 2 identical rows as illustrated below. Press.



Make 2

Night Forest Top Assembly Diagram

Tip: Pin the borders to the quilt top starting at the center and pinning out to the edge.



1. Sew the side partial star rows to the left and right sides of the quilt top. Press toward the inner border. Pay attention to the orientation.
2. Sew the top and bottom rows to the quilt top. Press toward the inner border. Pay attention to the orientation of the partial stars.
3. Sew the F3 side outer borders to the sides of the quilt top. Press toward the outer border.
4. Sew the F3 top/bottom outer borders to the top/bottom of the quilt top. Press toward the outer border.

Half Square Triangles (HST)

Additional illustrations on p. 5

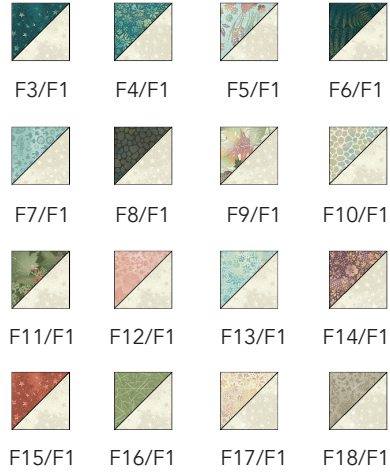
Make 2 sets of each pair
for a total of 4 units of each HST.

Make 2 at a Time Half Square Triangles (HST)

1. Draw a diagonal line from corner to corner on the wrong side of (32) 5-1/2" F1 squares.

2. Place an F1 square RST, over a 5-1/2" F3 square. Sew 1/4" away from either side of the marked line. Cut on the marked line. Press away from F1. Trim both pieces to 4-1/2" square. Make (2) for a total of (4) HSTs.

3. Make 2 sets of each of the HSTs using the illustrations to the right for a total of 4 of each pair.



Side HST borders - Illustrations p.9

1. Gather (2) of each HST along with (2) F1 4-1/2" x 14-1/2" rectangles and (2) F1 4-1/2" x 22-1/2" rectangles.
2. Sew the HSTs, F1 squares, and F1 rectangles together into rows, as illustrated on p.9. Press in one direction.
3. Sew the two rows together, nesting seams. Press open.
4. Repeat to have two side HST borders.

Top/Bottom HST borders - Illustrations p. 9

1. Gather (2) of each HST along with (8) F1 4-1/2" squares, (2) F1 4-1/2" x 15-1/2" rectangles and (2) F1 4-1/2" x 7-1/2" rectangles.
2. Sew the HSTs and F1 rectangles and squares together into rows, as illustrated on p.9. Press in one direction.
3. Sew the two rows together, nesting seams. Press open.
4. Repeat to have one top and one bottom HST borders.

Top Assembly Diagram on p.11

Day Forest HST Borders

Side Borders



F10/F16/F3/F7

F1 4-½" x 14-½"

F9/F8/F7/F14



F15/F11/F12

F1 4-½" x 22-½"

F5/F17/F18



Side HST Borders
Make 2

Top and Bottom Borders



F1-square - F4/F18/F17/F5

F1 4-½" x 15-½"

F12/F11/F15/F6 - F1 square



F6 - F1-square - F14/F7/F8/F9

F1 4-½" x 7-½"

F13/F3/F16/F10 - F1-square - F4



Top/Bottom HST Borders
Make 2

Day Forest Top Assembly

1. Sew the side HST borders to the inner bordered panel, paying attention to the orientation of the HSTs. Press toward the inner border.
2. Sew the top and bottom rows to the quilt top. Press toward the inner border. Pay attention to the orientation of the HSTs.
3. Sew the F1 side outer borders to the sides of the quilt top. Press toward the outer border.
4. Sew the F1 top/bottom outer borders to the top/bottom of the quilt top. Press toward the outer border.

Finishing

Note: The Night Forest Chatter quilt top takes the place of a backing for this project.

1. Layer the Night Forest Chatter quilt top (wrong side up), batting and Day Forest Chatter quilt top (right side up, centered). Baste layers to secure. Quilt as desired. Trim the excess Night Forest chatter quilt top and batting.
2. Sew the binding strips together into one continuous strip. Press in half lengthwise. Sew the binding to the Day Forest chatter quilt side with a $\frac{1}{4}$ " seam allowance. Turn the binding to the Night Forest Chatter side of the quilt and stitch down by hand with matching thread

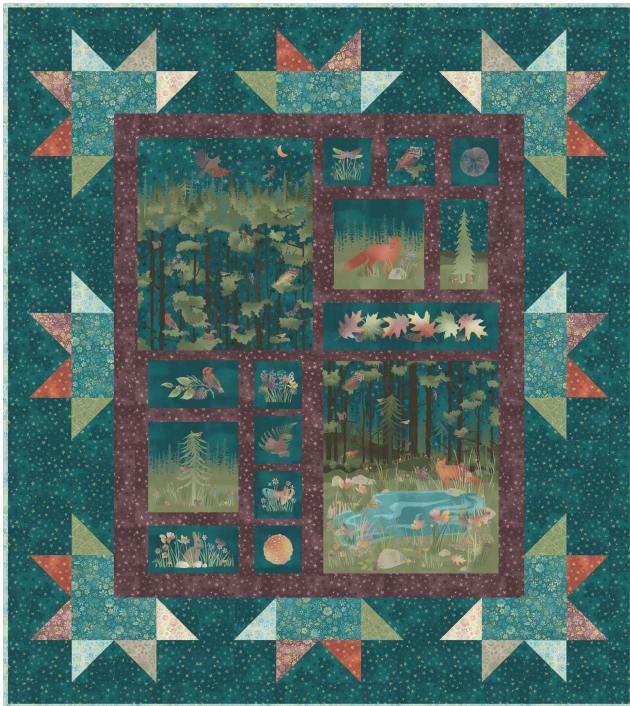
Day Forest Top Assembly Diagram

Tip: Pin the borders to the quilt top starting at the center and pinning out to the edge.



Forest Chatter Quilt

Make it reversible or make two quilts!



Find more projects and inspiration at maywoodstudio.com