

MAYWOOD  STUDIO

Adelaide Quilt



Adelaide Quilt by Maywood Studio

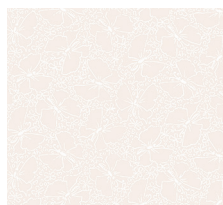
Featuring the Adelaide collection by Marti Michell from Maywood Studio.

54" x 72"

maywoodstudio.com

Adelaide

BY MARTI MICHELL



Fabric 1
10286-E



Fabric 2
10285-V



Fabric 3
10283-G



Fabric 4
10283-E



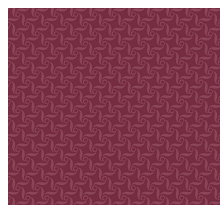
Fabric 5
10284-W



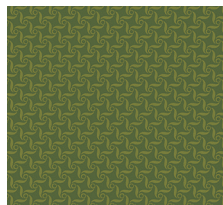
Fabric 6
10282-V



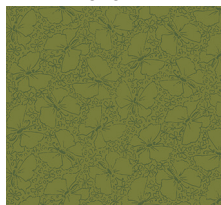
Fabric 7
10282-B



Fabric 8
10287-V



Fabric 9
10287-G



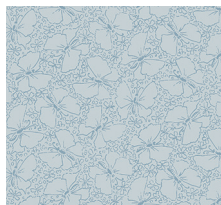
Fabric 10
10286-G



Fabric 11
10286-V



Fabric 12
10281-B



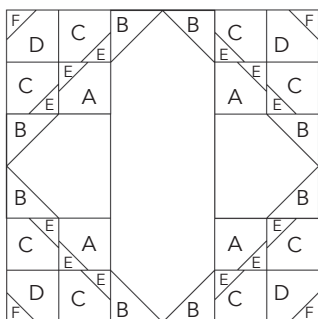
Binding
10286-B

MAYWOOD  STUDIO

Maywood Studio makes every effort to make sure our patterns are accurate.
Check for updates at maywoodstudio.com/projects

Fabric Requirements

Fabric 1	10286-E	5/8 yard
Fabric 2	10285-V	5/8 yard
Fabric 3	10283-G	5/8 yard
Fabric 4	10283-E	5/8 yard
Fabric 5	10284-W	5/8 yard
Fabric 6	10282-V	1/3 yard
Fabric 7	10282-B	1/3 yard
Fabric 8	10287-V	3/8 yard
Fabric 9	10287-G	3/8 yard
Fabric 10	10286-G	1/4 yard
Fabric 11	10286-V	1/4 yard
Fabric 12	10281-B	2-3/4 yard
Binding	10286-B	1/2 yard
Backing	108" wide	2 yards
	44/45" wide	4 yards



Adelaide Block Diagram

Cutting

Fabric 1 - Cream

Cut (5) 3-1/2" x WOF strips into
A: (48) 3-1/2" x 3-1/2" squares

Fabrics 2 and 3

Cut (5) 3-1/2" x WOF strips into
B: (48) 3-1/2" x 3-1/2" squares

Fabrics 4 and 5

Cut (5) 3-1/2" x WOF strips into
C: (48) 3-1/2" x 3-1/2" squares

Fabric 6 and 7

Cut (3) 3-1/2" x WOF strips into
D: (24) 3-1/2" x 3-1/2" squares

Fabrics 8 and 9

Cut (5) 2-1/2" x WOF strips into
E: (72) 2-1/2" x 2-1/2" squares

Fabric 10 and 11

Cut (2) 2-1/2" x WOF strips into
F: (24) 2-1/2" x 2-1/2" squares

Fabric 12 - Stripe

Fussy Cut Length of Fabric
(12) 6-1/2" x 18-1/2" rectangles
(24) 6-1/2" x 6-1/2" squares

Binding - Blue Butterflies

(7) 2-1/4" x WOF strips

WOF - Width of Fabric

LOF - Length of Fabric

RST - Right Sides Together

HST - Half Square Triangle

Adelaide Quilt Instructions

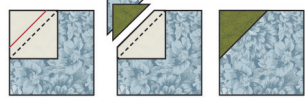
Please read all instructions before you begin. Seam allowance is 1/4. Fabric is abbreviated as 'F' - for example, F1 refers to Fabric 1.

Cut-away Corner Units

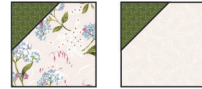
Gather: (48) F1-A, (48) F4-C, (48) F5-C, (24) F6-D, (24) F7-D, (72) F8-E, (72) F9-E, (24) F10-F, and (24) F11-F squares

Blue CAC Units

1. Mark a diagonal line from corner to corner on the E and F squares.
2. Place a F10-F square RST over the F7-D square. Sew on the marked line. Cut 1/4" away from the stitching. Press. Make 24.
3. Repeat step 2 with F9-E squares and F4-C squares. Make 48.
4. Repeat step 2 with F9-E squares and F1-A squares. Make 24.



F10-F
F7-D
Make 24

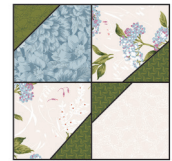
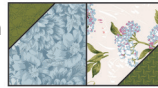


F9-E
F4-C
Make 48



F9-E
F1-A
Make 24

5. Lay out your cut-away corner squares as shown to the right.



6. Sew a F7 unit to a F4 unit. Press.



7. Sew a F4 unit to a F1 unit, paying close attention to the orientation. Press.

8. Sew these two pairs of squares together. Press. Make 24 Blue Corner units.

Blue CAC Units
Make 24

Pink CAC Units

9. Repeat step 2 with F8-E squares and F5-C squares. Make 48.
10. Repeat step 2 with F11-F squares and F6-D squares. Make 24.
11. Repeat step 2 with F8-E squares and F1-A squares. Make 24.
12. Lay out your cut away corner squares as shown to the right.
13. Sew a F5 square to a F6 square. Press.
14. Sew a F1 square to a F5 square. Press.



F8-E
F5-C
Make 48



F11-F
F6-D
Make 24



F8-E
F1-A
Make 24



Pink CAC Units
Make 24

15. Sew these two pairs of squares together. Press. Make 24 Pink Corner units.

Short Stripe Unit

Gather (24) F12, (24) F2-B, and (24) F3-B squares

1. Mark a diagonal line from corner to corner on the B squares.
2. Place a F2-B square RST over the top left corner of a F12 square, making sure the stripe is vertical. Sew on the marked line. Cut $\frac{1}{4}$ " away from the stitching. Press.
3. Place a F3-B square RST over the top right corner of the F12 square. Sew on the marked line. Cut $\frac{1}{4}$ " away from the stitching. Press.
4. Make 24 small stripe units.



F2-B - F3-B,
F12-Square



Make 24

Tall Stripe Unit

Gather (12) F12 rectangles, (12) F2-B squares, and (12) F3-B squares

1. Mark a diagonal line from corner to corner on the B squares.
2. Place a F3-B square RST over the top left corner of a F12 rectangle, making sure the stripe is vertical. Sew on the marked line. Cut $\frac{1}{4}$ " away from the stitching. Press.
3. Place another F3-B square RST over the bottom right corner of the F12 rectangle. Sew on the marked line. Cut $\frac{1}{4}$ " away from the stitching. Press.
4. Place a F2-B square RST over the top right corner of the F12 rectangle. Sew on the marked line. Cut $\frac{1}{4}$ " away from the stitching. Press.
5. Place another F2-B square RST over the bottom left corner of the F12 rectangle. Sew on the marked line. Cut $\frac{1}{4}$ " away from the stitching. Press.
6. Make 12 tall stripe units.



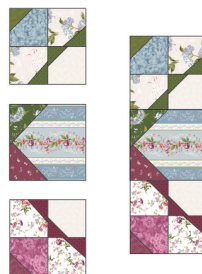
Upper: F3-B - F2-B
F12-Rectangle
Lower: F2-B - F3-B



Make 12

Quilt Blocks

1. Sew a blue cut-away corner unit to the top of the short stripe unit, as laid out to the right. Press.
2. Sew a pink cut-away corner unit to the bottom of the step 1 unit. Press.
3. Make 24.
4. Sew a step 2 unit to the left and right of a tall stripe unit. Press. Make 12.



Make 24

Quilt Top Rows

1. Lay out the quilt blocks as shown on p.7. Press in one direction. Make (2) Row As and (2) Row Bs.
2. Sew blocks into rows.
3. Sew rows together. Press.



Quilt Blocks
Step 4

Finishing

1. Layer the backing (wrong side up), batting and quilt top (right side up). Baste layers to secure. Quilt as desired. Trim the excess backing and batting.
2. Sew the binding strips together into one continuous strip. Press in half length-wise. Sew the binding to the quilt top with a 1/4" seam allowance. Turn the binding to the back side of the quilt and stitch down by hand with matching thread.



Make 12

Quilt Top Rows Diagram

Row A



Row B



Row A



Row B



Quilt Planning Diagram

Use this diagram to plan your quilt top.

