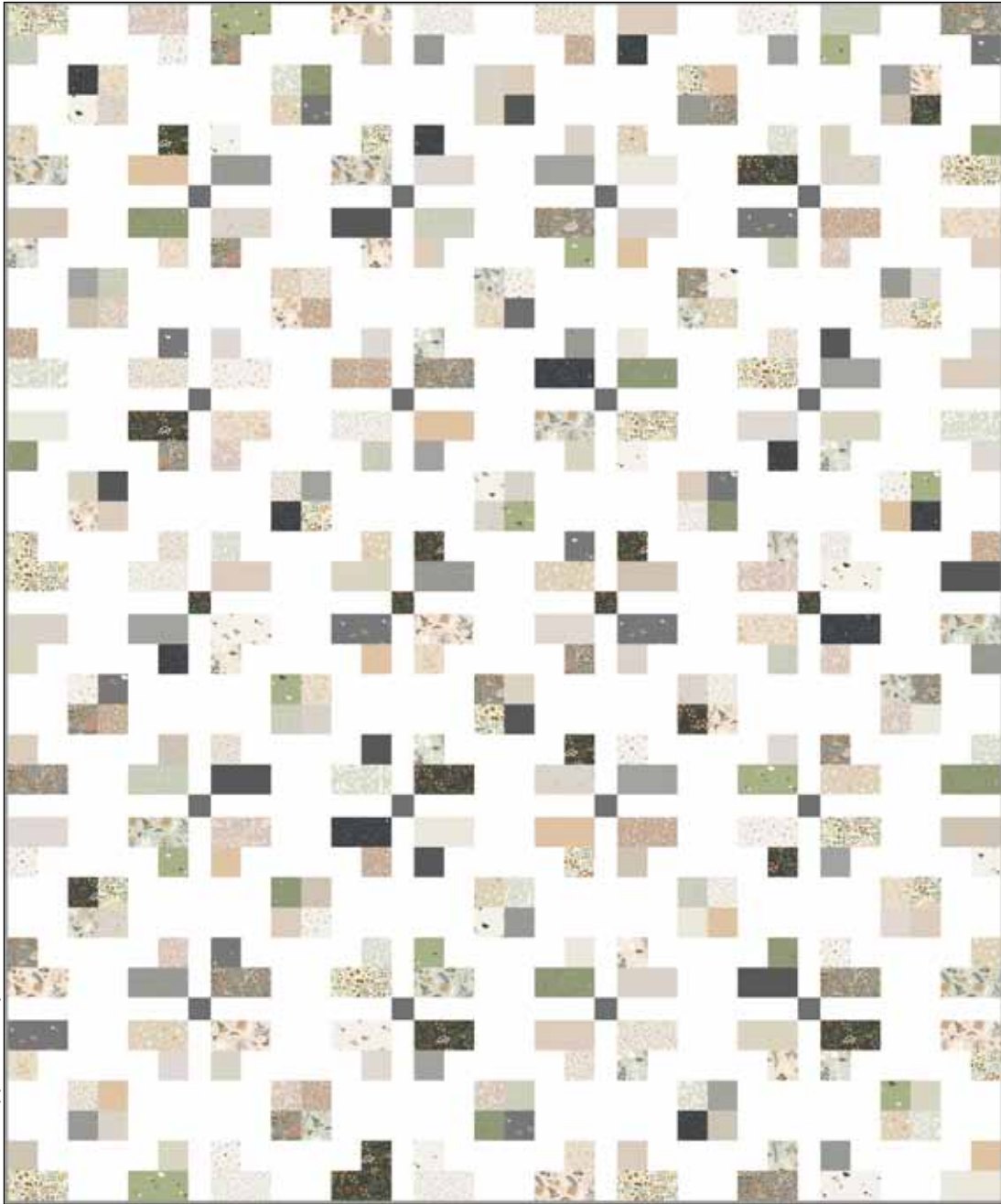
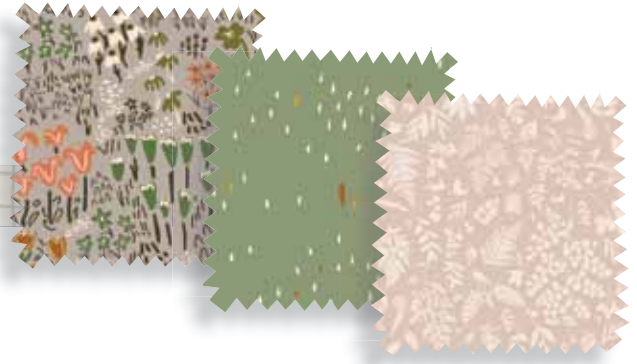


Au Naturel

Quilt Design by Wendy Sheppard



Quilt size: approximately 66" x 80"

*Au Naturel by Jacqueline Schmidt
for P&B Textiles
Uses one 2 1/2" Au Naturel Strip Set.*



P&B Textiles • pbtex.com • 800-351-9087 • 208 Clock Tower Square, Portsmouth, RI 02871

Au Naturel

Fabric collection by Jacqueline Schmidt for P&B Textiles
 Quilt design by Wendy Sheppard • Uses one 2 1/2" Au Naturel Strip Set
 Skill level: Advanced Beginner • Finished Quilt Size: approximately 66" x 80"

Quilt Yardages:

Background

Fabric: **RA10 762 W**..... 3 5/8 yards

One 2 1/2" strip package of Au Naturel (42 skus)

Binding: **ANAT 4895 S**..... 5/8 yard

Backing: **ANAT 4903 G suggested** 5 yards

Batting: 74" x 88"

Cutting Instructions:

Please read all instructions carefully before beginning. Strips are cut across the width of fabric (perpendicular to selvages) unless otherwise stated. All seams are sewn with a 1/4" seam unless otherwise stated. Label all pieces.

From Background:

1. Cut twelve 4 1/2" strips. Subcut sixty 4 1/2" squares and sixty 2 1/2" x 4 1/2" rectangles. (Pieced Blocks)
2. Cut four 8 1/2" strips. Subcut sixty 2 1/2" x 8 1/2" rectangles. (Pieced Blocks)
3. Cut three 12 1/2" strips. Subcut forty-nine 2" x 12 1/2" rectangles (Sashing)

From one 2 1/2" strip package (42 skus):

1. From two strips, subcut twenty 2" squares. (Cornerstones)
2. From 30 strips (may use more for a scrappier quilt), subcut (120) 2 1/2" x 4 1/2" rectangles and (240) 2 1/2" squares. **NOTE:** One strip is sufficient to cut eight 2 1/2" x 4 1/2" rectangles, or sixteen 2 1/2" squares, or a combination of four 2 1/2" x 4 1/2" rectangles and eight 2 1/2" squares.

From Binding:

1. Cut eight 2 1/4" strips. (Binding)

Piecing Instructions:

Pieced Blocks (Use as many different prints as desired to construct pieced blocks.)

1. Sew together four 2 1/2" print squares (P) to make a four-patch unit. Add two 4 1/2" Background squares (BKGD) to the left and right sides to make a row unit. (Figure 1)

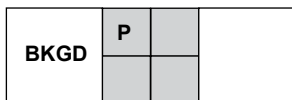


Figure 1
Make one.
 4 1/2" x 12 1/2" unfinished.

2. Sew two 2 1/2" print squares to the opposite short sides of one 2 1/2" x 8 1/2" Background rectangle to make a row unit. Make a total of two row units. (Figure 2)



Figure 2
Make two.
 2 1/2" x 12 1/2" unfinished.

3. Sew two 2 1/2" x 4 1/2" print rectangles to the opposite short sides of one 2 1/2" x 4 1/2" Background rectangle to make a row unit. Make a total of two row units. (Figure 3)



Figure 3
Make two.
 2 1/2" x 12 1/2" unfinished.

4. Sew together row units made in steps 1-3 to complete one pieced block. Block measures 12 1/2" square unfinished. Make a total of thirty pieced blocks. (Figure 4)

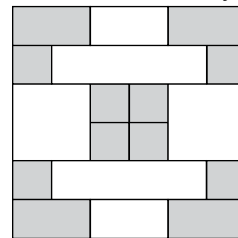


Figure 4
Make 30.
 12 1/2" x 12 1/2" unfinished.

Quilt Assembly:

1. **Pieced rows.** Sew together five pieced blocks, alternating with four 2" x 12 1/2" Background sashing rectangles to make a pieced row. Make a total of six pieced rows. (Figure 5)



Figure 5 **Make six.**

2. **Pieced sashing rows.** Sew together five 2" x 12 1/2" Background rectangles and four 2" cornerstone squares to make a pieced sashing row. Make a total of five pieced sashing rows. (Figure 6)

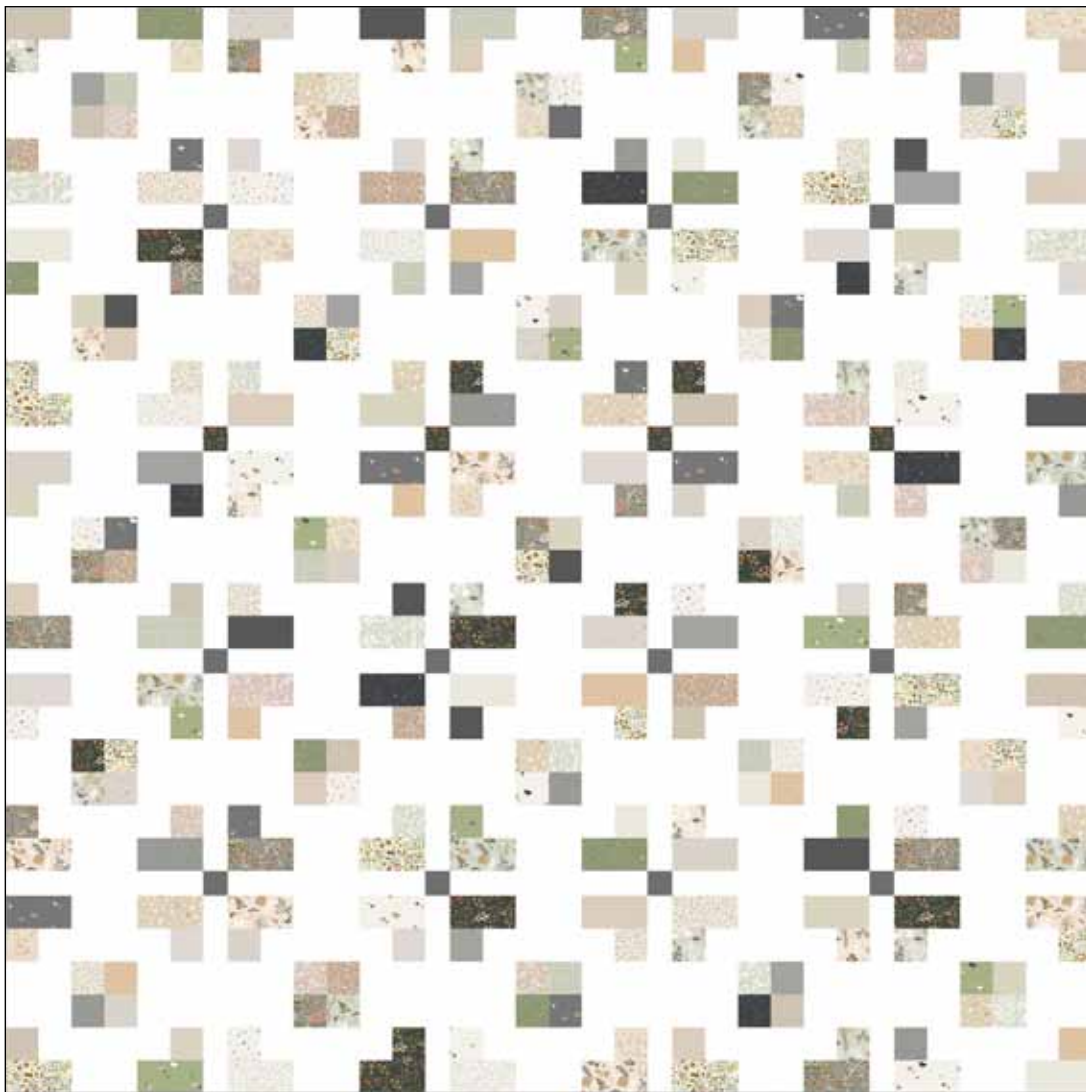
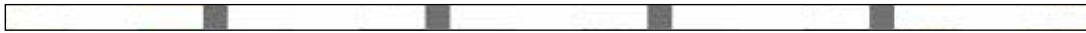
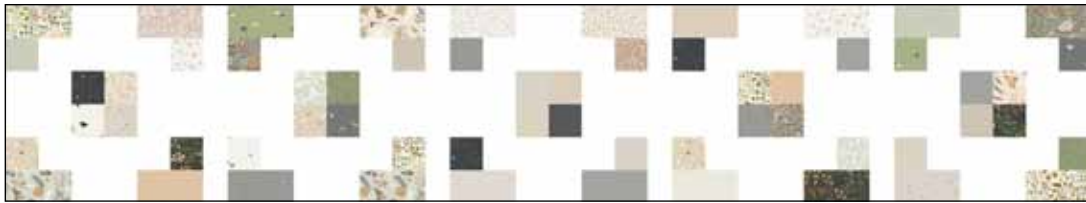


Figure 6 **Make five.**

3. **Quilt center.** Sew together pieced rows, alternating with pieced sashing rows, to complete quilt top. (Quilt Diagram)

Finishing:

1. Prepare backing using two widths of fabric with vertical seam. Press seams open. Trim to 74" x 88".
2. Layer quilt, batting, and backing. Baste layers together.
3. Quilt as desired.
4. Trim layers even with quilt top.
5. Join eight 2 1/4" A binding strips with diagonal seams. Press seams open. Attach binding using your favorite method. **Tip:** Lay binding on the quilt before sewing to make sure that binding seams do not meet any of the corners.
6. Make a label and sew to the back of the quilt.



Quilt Diagram

Ana Natural

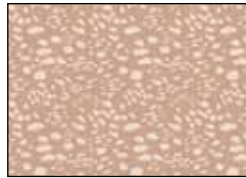
Fabric Collection
by Jacqueline Schmidt for P&B Textiles



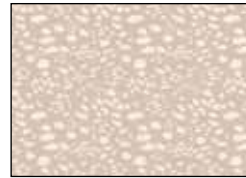
ANAT 4893 E



ANAT 4893 NE



ANAT 4894 LZ



ANAT 4894 NE



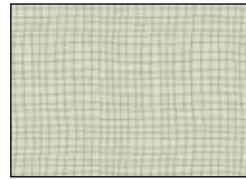
ANAT 4895 NE



ANAT 4895 S*



ANAT 4896 E



ANAT 4896 G



ANAT 4896 S



ANAT 4897 E



ANAT 4897 G



ANAT 4897 K



ANAT 4898 E



ANAT 4898 MU



ANAT 4898 SS



ANAT 4899 AU



ANAT 4899 DS



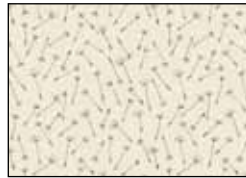
ANAT 4899 LG



ANAT 4899 LS



ANAT 4900 AU



ANAT 4900 LG



ANAT 4900 LS



ANAT 4900 NE



ANAT 4901 E



ANAT 4901 G



ANAT 4901 S



ANAT 4902 G†



ANAT 4902 NE



ANAT 4902 S



ANAT 4903 G



ANAT 4903 K



ANAT 4903 LZ



RA10 762 W*

Quilt uses one 2 1/2" strip set of 42 skus

*Additional fabrics used in quilt

†Backing