

Canyon Birds

Free Project
NOT FOR RESALE

TABLE
RUNNER SET



Featuring fabrics from the **Canyon Birds** collection by Jennifer Brinley for **STUDIO C fabrics**

Fabric Requirements

- | | |
|-----------------|-------------|
| (A) 6774-33 | 1 panel |
| (B) 6770-38 | 1/3 yard |
| (C) 6769-22 | 1/2 yard |
| (D) 6772-22 | 2/3 yard |
| (E) 6768-38 | 1 yard |
| (F) Merlot-53+* | 1 yard |
| Back 6771-33 | 3-1/2 yards |

Additional Supplies Needed

- Batting: (1) 68" x 26", (4) 19" x 25"
 (Recommended: Air Lite® Colour Me
 100% Cotton)
 Sewing and Quilting thread
 Sewing and Quilting supplies

Table Runner size: 63" x 21"
 Placemat size: 15" x 22"

+Includes binding.

*Peppered Cottons Collection.

Please check our website for pattern updates before starting this project.

Skill Level: Beginner
 Set designed by Denise Russell

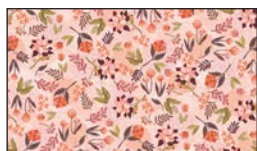
Fabrics in the Collection



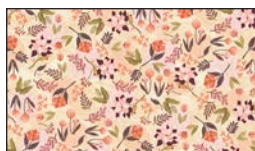
6774-33 Canyon Birds Blocks - Cream



6775-33 Border Stripe - Cream



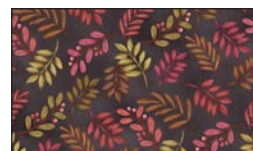
6767-22 Large Botanical Blush



6767-33 Large Botanical Cream



6768-33 Tossed Leaves Cream



6768-38 Tossed Leaves Brown



6769-22 Marble Texture Blush



6770-22 Wildflower Silhouette - Med. Pink



6770-38 Wildflower Silhouette - Brown



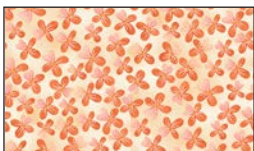
6771-22 Bird Allover Blush



6771-33 Bird Allover Cream



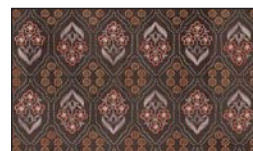
6772-22 Small Tossed Flowers - Blush



6772-33 Small Tossed Flowers - Cream



6773-33 Small Foulard Cream



6773-38 Small Foulard Brown

Selected fabric from the
Peppered Cottons collection



Merlot-53

Cutting

Cutting Instructions

Please note: All strips are cut across the width of the fabric (WOF) from selvage to selvage unless otherwise noted. (WOF = Width of Fabric, LOF = Length of Fabric).

Fabric A (6774-33 Canyon Birds Blocks Panel), trim:

*(11) 7" squares and (2) 7" x 15" rectangles.

Fabric B (6770-38 Wildflower Silhouette - Brown), cut:

* (5) 1" x WOF strips for border 1 – Placemats.

* (3) 1-1/2" x WOF strips for border 1 - Table Runner.

Fabric C (6769-22 Marble Texture - Blush), cut:

*(5) 1-1/2" x WOF strips for border 2 – Placemats.

*(4) 2" x WOF strips for border 2 – Table Runner.

Fabric D (6772-22 Small Tossed Flowers - Blush), cut:

*(8) 1-1/2" x WOF strips for border 4 – Placemats.

*(4) 2" x WOF strips for border 4 – Table Runner.

Fabric E (6768-38 Tossed Leaves - Brown), cut:

*(8) 2" x WOF strips for border 3 – Placemats.

*(4) 3-1/2" x WOF strips for border 3 – Table Runner.

Fabric F (Peppered Cottons-53 Merlot), cut:

*(13) 2-1/2" x WOF strips for binding: (5) for Table Runner and (8) for Placemats.

TABLE RUNNER ASSEMBLY

(Follow the quilt diagram and photograph while assembling the table runner and placemats.)

1. Following the photograph for block placement, lay out three 7" squares and two 7" x 15" rectangles. Sew the units together and press the seams in one direction.

2. For border 1, sew the three 1-1/2" Fabric B strips together end to end using diagonal seams. Cut two 7" strips and sew one strip to each side of the runner. Measure the width of the runner through the center. Cut two border strips that length and sew one to the top and one to the bottom. Press the seams toward the borders.

3. For border 2, sew the four 2" Fabric C strips together end to end using diagonal seams. Cut two 8" strips and sew one strip to each side of the runner. Repeat Step 2 to add the top and bottom border strips.

4. For border 3, sew the four 3-1/2" Fabric E strips together end to end using diagonal seams. Cut two 12" strips and sew one strip to each side of the runner. Repeat Step 2 to add the top and bottom border strips.

5. For border 4, sew the four 2" Fabric D strips together as before. Measure the vertical length of the runner through the center and cut two border strips that length. Sew one strip to each side of the runner. Measure the width of the runner through the center. Cut two border strips that length and sew one to the top and one to the bottom. Press the seams toward the borders.

Layering, Quilting, and Finishing

6. Cut a 26" x 68" rectangle of the backing fabric. Create a quilt sandwich with the batting between the runner and the backing. Pin or baste layers together, mark quilting design, and quilt by hand or machine. When quilting is complete, remove pins or basting and trim batting and backing even with raw edges of the table runner.

Binding

7. Join the five 2-1/2" Fabric F binding strips together end to end using a diagonal seam to make one long strip. Fold in half lengthwise and press. Sew binding to the edges of the table runner, mitering corners, and overlapping ends. Fold binding to the back of the runner and stitch it in place by hand to finish.

PLACEMAT ASSEMBLY

1. Referring to the photograph for block placement, lay out the 7" squares and sew them together two by

Sewing

two to make four 7" x 13-1/2" center strips. Press the seams in one direction.

2. For border 1, sew the five 1" Fabric B strips together end to end using diagonal seams. Cut two 7" strips and sew one strip to each side of the center strips. Measure the width of the placemats through the center. Cut two border strips that length and sew one to the top and one to the bottom. Press the seams toward the borders.

3. For border 2, sew the five 1-1/2" Fabric C strips together end to end using diagonal seams. Cut two 8" strips and sew one strip to each side of the placemats. Repeat Step 2 to add the top and bottom border strips.

4. For border 3, sew the eight 2" Fabric E strips together end to end using diagonal seams. Cut two 10" strips and sew one strip to each side of the placemats. Repeat Step 2 to add the top and bottom border strips.

5. For border 4, sew the eight 1-1/2" Fabric D strips together as before. Measure the vertical length of the placemats through the center and cut two border strips

that length. Sew one strip to each side. Measure the width of the placemats through the center. Cut two border strips that length and sew one to the top and one to the bottom. Press the seams toward the borders.

Layering, Quilting, and Finishing

6. Cut the remaining 6771-33 Bird Allover - Cream backing fabric into four 25" x 19" backing rectangles. Create a quilt sandwich with four 25" x 19" batting pieces between the placemats and the backing. Pin or baste layers together, mark quilting design, and quilt by hand or machine. When quilting is complete, remove pins or basting, and trim batting and backing even with raw edges of the placemats.

Binding

7. Join the eight 2-1/2" Fabric F binding strips together end to end using a diagonal seam to make one long strip. Fold in half lengthwise and press. Sew binding to the edges of the placemats, mitering corners, and overlapping ends. Fold binding to the back of each placemat and stitch it in place by hand to finish.

Diagrams

