

# A CAMPING WE WILL GO

Quilt design by Larene Smith of The Quilted Button featuring fabrics from the  
"Suzy's Zoo The Great Outdoors" collection by Hoffman California Fabrics

Finished Size 56 1/4" x 65"



**HOFFMAN FABRICS**  
CALIFORNIA-INTERNATIONAL

# “A Camping We Will Go” featuring fabrics by Hoffman California Fabrics

## Quilt Yardage Chart

Fabric		
A	M4200 03-White	1 ¾ yards
B	L7300 607-Tiramisu	¾ yard
C	M4202 139-Periwinkle	1 ¾ yards
D	L7300 542-Dove	½ yard
E	M7500 414-Biscotti*	1 yard
F	M4202 03-White	½ yard
G	M4201 07-Blue	½ yard
H	M4201 64-Tan	½ yard
I	L7300 16-Sky	⅞ yard
J	M7500 77-Sage	½ yard
K	L7300 96-Olive	½ yard

\*Yardage includes binding.

BACKING: Suzy's Zoo The Great Outdoors coordinate of your choice. 4 yards



M4200  
03-White



M4201  
07-Blue



M4201  
64-Tan



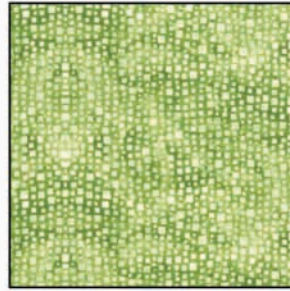
M4202  
139-Periwinkle



M4202  
03-White



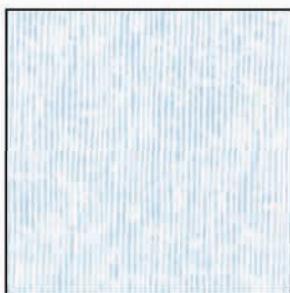
M7500  
414-Biscotti



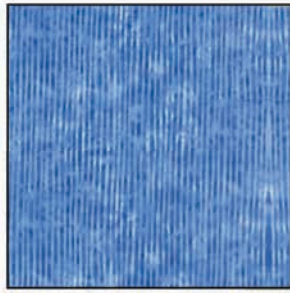
M7500  
77-Sage



L7300  
607-Tiramisu



L7300  
542-Dove



L7300  
16-Sky



L7300  
96-Olive

View swatches and download quilt patterns at [www.HoffmanFabrics.com](http://www.HoffmanFabrics.com)

# A Camping We Will Go

“The Great Outdoors” Collection by Hoffman California International Fabric

Finished Quilt Size: 56-1/4” x 65”

© 2014 – Copyright – All Rights Reserved Design and Instruction by Larene Smith of The Quilted Button



## Fabric Requirements

Fabric Label	Yardage	Fabric Color	Location
Fabric A	1 3/4 Yards	M4200-3 White	Border 5 and Quilt Center
Fabric B	3/8 Yard	L7300-607 Tiramisu	Border 4
Fabric C	1-3/8 Yards	M4202-139 Periwinkle	Border 3
Fabric D	1/3 Yard	L7300-542 Dove	Border 2
Fabric E	1 Yard	M7500-414 Biscotti	Border 1, Sashing, Binding and Wood for Tent
Fabric F	1/2 Yard	M4202-3 White	Quilt Center
Fabric G	1/2 Yard	M4201-7 Blue	Inside of Tent
Fabric H	1/2 Yard	M4201-64 Tan	Inside of Tent
Fabric I	7/8 Yard	L7300-16 Sky	Sky for Tent Blocks
Fabric J	1/2 Yard	M7500-77 Sage	Inside of Tent Flap
Fabric K	1/2 Yard	M7300-96 Olive	Outside of Tent Flap
Backing		M4201-7 Blue	
Batting	62" x 71"		
PLASTIC MYLAR	(2) 8-1/2" x 11" Sheets	Templates	
DOUBLE SIDED FUSIBLE WEB	1/8 Yard (12" Wide)	Fusible Web	Posts of Tents

## General Information

- All seams are sewn with a 1/4" seam allowance.
- Pre-wash and press with spray starch before cutting.
- WOF = Width of Fabric.
- Press seams open as much as possible to decrease bulk.
- Finished Block is 8" Square – Sashing is 3/4".
- There are 5 (FIVE) Borders beginning from the INSIDE towards the OUTSIDE.

## Instructions

### Step 1 – Cutting the Fabric

1. Fabric A – Cut as follows:
  - a. Cut (2) strips at 55-1/2" x 5-1/4" rectangle (Left and Right Sides) along the SELVAGE EDGE to ensure that the fabric goes in the proper direction.
  - b. Cut (4) strips from the balance width of the fabric as if you were cutting from SELVAGE to SELVAGE at 5-1/4" then sew the strips together and sub-cut into (2) 56-1/4" x 5-1/4" rectangles (Top and Bottom) for the BORDER 5.
  - c. From the remainder of the fabric cut (5) 8-1/2" squares – Label Block A.
2. Fabric B – Cut (6) strips at 1-1/2" x WOF – Sew all the strips together at the 1-1/2" edge then sub-cut into (2) 1-1/2" x 53-1/2" rectangles (Left and Right Sides) and (2) 1-1/2" x 46-3/4" rectangles (Top and Bottom) – BORDER 4.
3. Fabric C – Cut (2) 3-1/2" x 47-1/2" rectangles ALONG the SELVAGE (Left and Right Sides) and (4) strips (3 1/2" wide) from the balance from the remaining WIDTH of fabric. Sew together at the 3-1/2" edge and sub-cut into (2) 3-1/2" x 44-3/4" rectangles (Top and Bottom) – BORDER 3.

4. Fabric D – Cut (5) strips at 1-3/4" x WOF – Sub-cut (2) of the 1-3/4" strips to measure 1-3/4" x 38-3/4" (Top and Bottom) – Sew the remaining (3) strips together at the 1-3/4" edge then sub-cut into (2) 1-3/4" x 45" rectangles (Left and Right Sides) – BORDER 2.
5. Fabric E – Cut as follows:
  - a. Cut (4) strips at 1-1/4" x WOF – Sub-cut into (15) 1-1/4" x 8-1/2" rectangles – SASHING BETWEEN BLOCKS – Label Sashing.
  - b. Cut (4) strips at 1-1/4" x WOF – Sub-cut into (4) 1-1/4" x 34-3/4" rectangles – SASHING BETWEEN ROWS.
  - c. Cut (2) strips at 1-1/4" x WOF – Sub-cut into (2) 1-1/4" x 36-1/4" rectangle (Top and Bottom) – BORDER 1.
  - d. Cut (3) strips at 1-1/4" x WOF – Sew all the strips together at the 1-1/4" edge then sub-cut into (2) 1-1/4" x 43-1/2" rectangles (Left and Right Sides) – BORDER 1.
  - e. Cut (7) strips at 2 1/2" WOF for the binding.
  - f. The balance of the fabric fuse the DOUBLE SIDED WEB to the wrong side and cut (40) 2-1/4" x 1/4" rectangles as these will be used for the WOOD that is at the TOP of the Tent.
6. Fabric F – Cut (2) strips at 8-1/2" x WOF – Sub-cut into (5) 8-1/2" squares – Label Block B.
7. Fabric G through Fabric K will be cut when preparing the TENT BLOCKS as this will allow for less confusion.

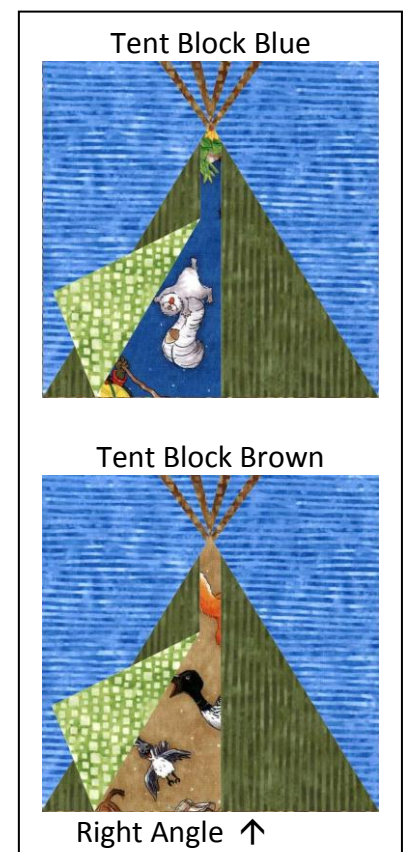
### Step 2 – Preparing the Fabric for the Tents

*Note: ADD 1/4" seam allowance all the way around the outer line when cutting the template out of the "Plastic Mylar". Cut all (3) THREE templates and label "A, B, and C" as shown at the end of the pattern. Cut (1) additional Template of A and C with 1/2" seam allowance all the way around the outer line as this will make the 3D Flaps on the Tent Blocks.*

8. Using the TEMPLATES cut as follows:
  - a. Fabric G – Fussy Cut (5) of Template B for the inside of the "Tent Block Blue".
  - b. Fabric H – Fussy cut (5) of Template B for the inside of the "Tent Block Brown".
  - c. Fabric I – Cut as follows for the SKY part of the block – *When cutting the Templates keep in mind the direction of the STRIPES:*

*NOTE: When cutting the Templates for A and C it is best to cut a single layer with RIGHT SIDE UP.*

    - i. Cut (4) strips at 4-1/2" x WOF – Using "Template A" cut (10) pieces (Label "A").
    - ii. Using the balance of the strips cut (10) of "Template C" pieces (Label "C").
    - iii. Cut (1) strip at 8-1/2" x WOF – Sub-cut into (10) 8-1/2" x 2" rectangles – Mark the middle at 4-1/4" in from the 2" edge – place and fuse (4) of Fabric E 2-1/4" x 1/4" rectangles overlapping at the BOTTOM and expanding out towards the top as shown in the "Tent Block Blue or Brown" – Make (10) – Label "Top".
9. Fabric J (Outside) and K (Inside) – Cut (2) strips at 7-3/8" x WOF from each color – Using "Template A1" cut (10) from each color (Label "A1") – Using "Template C1" cut (10) from each color (Label "C1") – Inside and Outside Tent Flaps.



### Step 3 – Sewing the Tents

10. Sew (1) Fabric J “A1” to (1) Fabric K “C1” with RIGHT sides together on the RIGHT ANGLE – Do not sew on the ANGLE edge as this will be sewn into the seam – Make (10) – RIGHT FLAP.
11. Sew (1) Fabric J “C1” to (1) Fabric K “A1” exactly as previously done – Make (1) – LEFT FLAP.
12. Layer the RIGHT and LEFT FLAPS onto (1) Fabric G “Tent Block Brown” – pin to secure then layer (1) of Fabric I “A” onto the LEFT side and sew the seam – press towards Fabric I – Make (5).
13. Layer (1) Fabric I “C” onto the RIGHT side and sew the seam – press towards Fabric I – Make (5) – this finishes the tent section at 8-1/2” x 7”.
14. Sew (1) of Fabric I “TOP” to the top of the tent to finish the “Tent Block Brown” at 8-1/2” square – Make (5) – Label “Tent Block Brown” and set aside for use later.
15. Repeat from Instruction No. 12 except CHANGE Fabric G to Fabric H to make the “Tent Block Blue” – Make (5) – Label “Tent Block Blue” and set aside for use later.

### Step 4 – Sewing the Quilt Center – Refer to the COVER PICTURE as a Guide

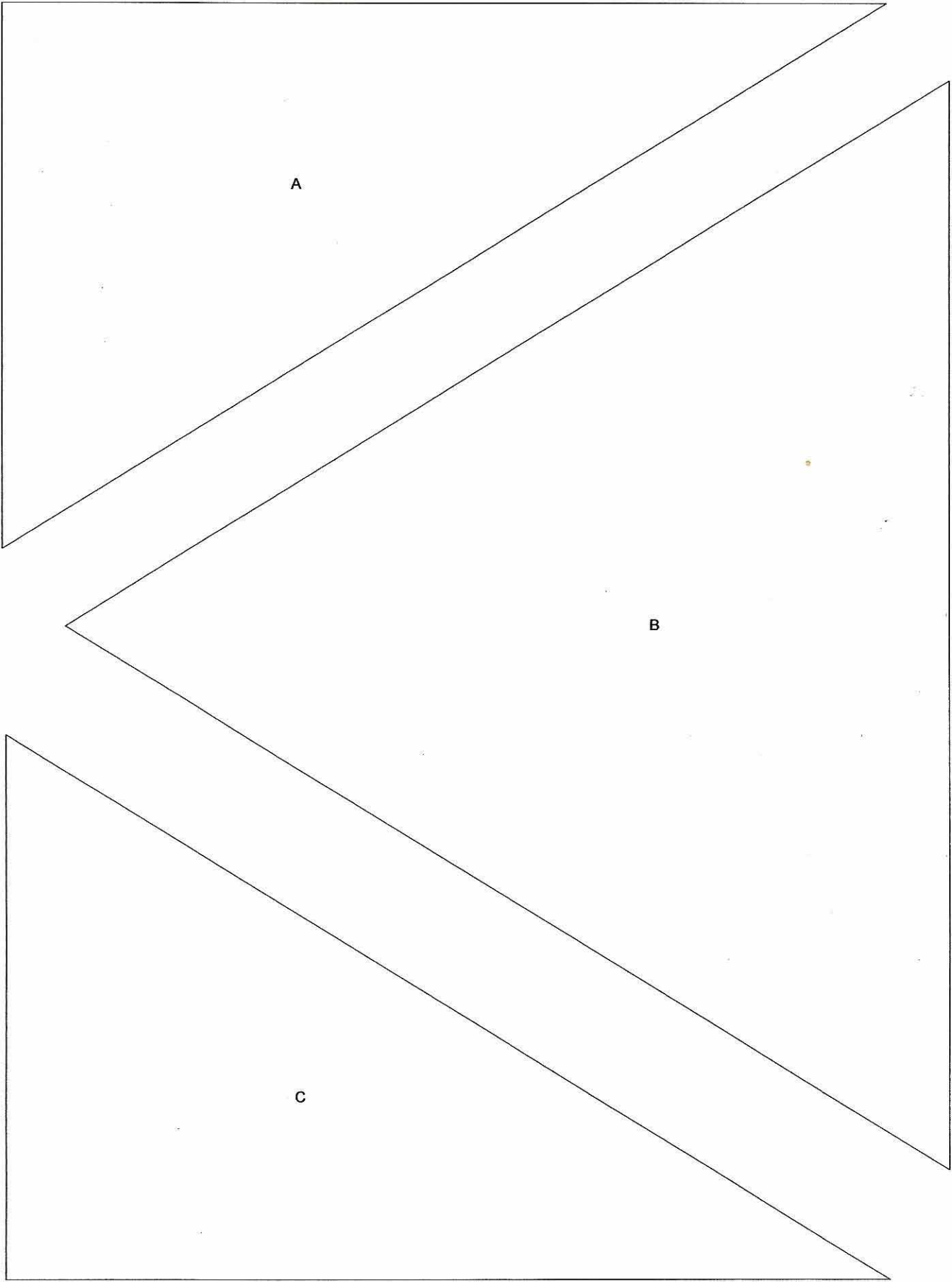
16. Sew the ROWS together as follows to measure 34-3/4” x 8-1/2”:
  - a. Row 1: Block A, Sashing, Tent Block Blue, Sashing, Block B, Sashing, Tent Block Brown
  - b. Row 2: Tent Block Blue, Sashing, Block A, Sashing, Tent Block Brown, Sashing, Block B
  - c. Row 3: Block B, Sashing, Tent Block Brown, Sashing, Block A, Sashing, Tent Block Blue
  - d. Row 4: Tent Block Brown, Sashing, Block B, Sashing, Tent Block Blue, Sashing, Block A
  - e. Row 5: Block A, Sashing, Tent Block Blue, Sashing, Block B, Sashing, Tent Block Brown
17. Sew the ROWS together by inserting (1) Fabric E 1-1/4” x 34-3/4” rectangles between each row to finish the center as 34-3/4” x 43-1/2”.

### Step 5 – Adding the Borders

18. Border 1: Sew (1) Fabric E 1-1/4” x 43-1/2” rectangle to the LEFT and RIGHT sides, then sew (1) 1-1/4” x 36-1/4” rectangle to the TOP and BOTTOM to measure 36-1/4” x 45”.
19. Border 2: Sew (1) Fabric D 1-3/4” x 45” rectangle to the LEFT and RIGHT sides, then sew (1) 1-3/4” x 38-3/4” rectangle to the TOP and BOTTOM to measure 38-3/4” x 47-1/2”.
20. Border 3: Sew (1) Fabric C 3-1/2” x 47-1/2” rectangle to the LEFT and RIGHT sides, then sew (1) 3-1/2” x 44-3/4” rectangle to the TOP and BOTTOM to measure 44-3/4” x 53-1/2”.
21. Border 4: Sew (1) Fabric B 1-1/2” x 53-1/2” rectangle to the LEFT and RIGHT sides, then sew (1) 1-1/2” x 46-3/4” rectangle to the TOP and BOTTOM to measure 46-3/4” x 55-1/2”.
22. Border 5: Sew (1) Fabric A 5-1/4” x 55-1/2” rectangle to the LEFT and RIGHT sides, then sew (1) 5-1/4” x 56-1/4” rectangle to the TOP and BOTTOM to finish the quilt top at 56-1/4” x 65”.

### Step 7 – Finishing the Quilt

23. Layer the backing, batting, and quilt top and quilt as desired.
24. Bind the quilt to finish.



A

B

C

NOTE: WHEN PRINTING, MAKE SURE TO SELECT  
"AT ACTUAL SIZE" ON YOUR HOME PRINTER  
TO ENSURE ACCURACY OF TEMPLATES.

A



B



C

