

## Primrose Path

69" x 87"

Fabrics: "Shades Apart" from RJR Fabrics

Plum Dots #0808-03	3/4 yard
Dark Pink #0815-03	1/2 yard
Green Dots #0808-05	1/2 yard
Yellow Dots #0808-01	3/4 yard
Cream Floral #0806-01	7/8 yard
Lt. Blue Geometric #0816-03	1/2 yard
Green Leaf #0818-01	1/4 yard
Lt. Cream #0813-01	3 yards
Dk. Green #0807-04	1/4 yard
Basketweave #0820-02	1/8 yard
Blue Floral #0806-03	2 yards
Blue Vine #0811-03	1/2 yard
Pink Dots #0808-02	1/2 yard
Rose Print #0817-01	3/4 yard
Cream Vine #0811-01	1 yard
Yellow Floral #0806-02	1/2 yard
Blue Geometric #0816-04	1/2 yard
Olive Print #0813-04	3/4 yard
Pink Geometric #0816-01	1/4 yard
Backing #0806-03	5 yards
Batting:	77" x 86"

Notions: Thread for piecing, applique and quilting,  
Batting used is Warm & Natural® by The Warm Company

Designed by Christine Stainbrook

The information in this pattern is presented in good faith.  
Every effort has been taken to assure the accuracy herein.  
This pattern may not be reproduced in any form, either electronic  
or hard copy. The finished product may not be used for mass  
retail, commercial, or wholesale purposes, markets, or trade  
shows without written permission.

© 2012 Project House 360

# Primrose Path



A Project House 360 Quilt Pattern  
featuring fabric collections from



# Primrose Path

## COLOR CARD



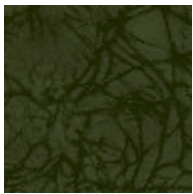
Cream Floral  
#0806-01



Blue Floral  
#0806-03



Yellow Floral  
#0806-02



Dk. Green  
#0807-04



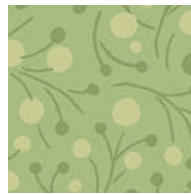
Yellow Dots  
#0808-01



Pink Dots  
#0808-02



Plum Dots  
#0808-03



Green dots  
#0808-05



Cream Vine  
#0811-01



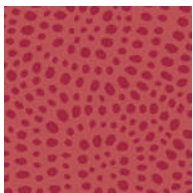
Blue Vine  
#0811-03



Lt. Cream  
#0813-01



Olive Print  
#0813-04



Dk. Pink  
#0815-03



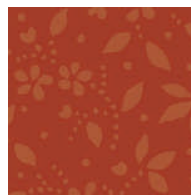
Pink  
Geometric  
#0816-01



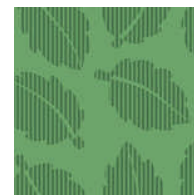
Lt. Blue  
Geometric  
#0816-03



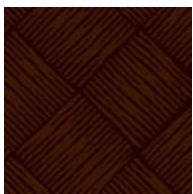
Blue  
Geometric  
#0816-04



Rose Print  
#0817-01



Green Leaf  
#0818-01



Basketweave  
#0820-02

# Primrose Path

Block Size: 9" x 9"

## Cutting:

Plum Dots:  
9 – 5 3/8" squares  
40 – petals

Yellow Dots:  
9 – 5 3/8" squares  
44 – petals

Dk. Green:  
52 – leaves

Blue Vine:  
9 – 5 3/8" squares

Rose Print:  
9 – 5 3/8" squares  
40 – petals

Olive Print:  
216" of 1/2" bias stems

Dk. Pink:  
9 – 5 3/8" squares

Cream Floral:  
9 – 5 3/8" squares  
34 – 3 1/8" squares

Lt. Blue Geometric:  
9 – 5 3/8" squares

Basketweave:  
52 – flower centers

Pink Dots:  
9 – 5 3/8" squares

Cream Vine:  
9 – 5 3/8" squares

Pink Geometric:  
40 – petals

Green Dots:  
9 – 5 3/8" squares

Green Leaf:  
17 – 3 1/8" squares

Lt. Cream:  
9 – 10 1/2" x 44"

Blue Floral:  
9 – 5 3/8" squares  
7 – 2 1/2" x 44"  
44 – petals

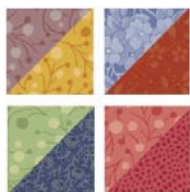
Yellow Floral:  
17 – 3 1/8" squares  
44 – petals

Blue Geometric:  
9 – 5 3/8" squares

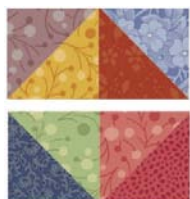
Block A:  
Make 18

Use the 5 3/8" squares to make 18 of each half-square triangle unit. Trim to 5" square if necessary.

plum dots/yellow dots  
blue floral/rose print  
green dots/blue vine  
pink dots/dk. pink



Stitch the units together as shown. Trim to 9 1/2" square if necessary.



Block B:  
Make 17

Make half-square triangle units as for block A, making 17 of each color combination:

blue geometric/cream floral  
dk. blue geometric/cream vine



Make half-square triangle units using the 3 1/8" squares, making 34 of each color combination:

yellow floral/cream floral  
green leaf/cream floral

Trim to 2 3/4" square if necessary.



Combine the units along with the cream vine 2 3/4" squares to complete the block. Trim to 9 1/2" square if necessary.





Stitch the blocks together, rotating and alternating as shown, to complete the center of the quilt.



Image shows 1/4 of design. Refer to cover picture for color placement of flowers

Layer, baste and quilt as desired.

Bind with the remaining blue floral fabric.

Cut one blue floral 2 1/2" x 44" strip in half. Add a whole strip to each piece. Add to the top and bottom of the quilt.

Stitch the remaining blue floral 2 1/2" x 44" strips together in pairs. Add to the sides of the quilt, mitering corners.

Cut one lt. cream 10 1/2" x 44" strip in half. Add a whole strip to each end of the half-strips. Add to the sides of the quilt.

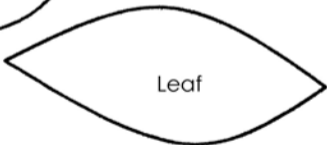
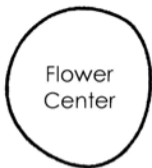
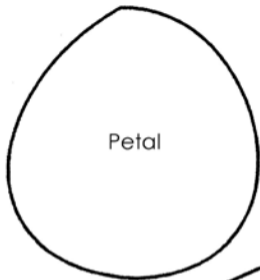
Stitch the remaining lt. cream 10 1/2" x 44" strips together in pairs. Add to the top and bottom of the quilt, mitering corners.

Appliqué:

Prepare pieces for appliqué

Refer to the picture for placement.

Appliqué pieces in place using your favorite method.



Square  
measures  
1"

Full Size Templates  
NO SEAM ALLOWANCE  
INCLUDED