

BOUQUET MEMORIES

Quilt design by Monique Dillard of Open Gate Quilts featuring fabrics from the "Bouquet Memories" collection by Hoffman California Fabrics



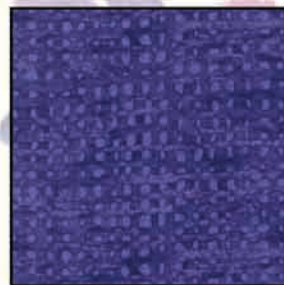
K7208 223-Orchid



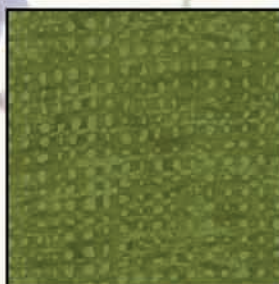
K7210 223-Orchid



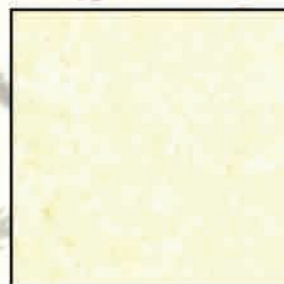
K7211 437-Pansy



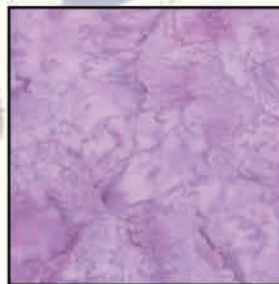
K7212 14-Purple



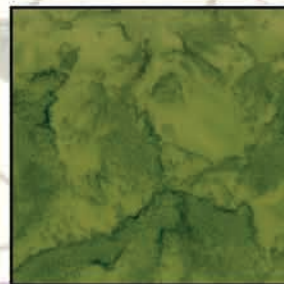
K7212 96-Olive



1895 500-Gardenia



1895 357-Cairo



1895 220-Fern

Free pattern available from www.hoffmanfabrics.com

Quilt Size 72" x 88 1/2"

Orchid Colorway	
K7208 223-Orchid	2 1/4 yards
K7210 223-Orchid	1 5/8 yards
K7211 437-Pansy	7/8 yard
K7212 14-Purple	3/4 yard
K7212 96-Olive*	1 yard
1895 357-Cairo	1/2 yard
1895 220-Fern	1/2 yard
1895 500-Gardenia	3/8 yard

*Yardage includes binding.

BACKING: Coordinate of your choice. 5 1/2 yards

HOFFMAN FABRICS
CALIFORNIA-INTERNATIONAL

“Bouquet Memories” featuring fabrics by Hoffman California Fabrics

Yardage Chart

Iris Colorway	Wild Rose Colorway	
K7208 40-Iris	K7208 94-Wild Rose	2 1/4 yards
K7210 40-Iris	K7210 94-Wild Rose	1 5/8 yards
K7211 40-Iris	K7211 94-Wild Rose	7/8 yard
K7212 18-Royal	K7212 212-Berry	3/4 yard
K7212 96-Olive*	K7212 96-Olive*	1 yard
1895 40-Iris	1895 599-Valentine	1/2 yard
1895 220-Fern	1895 220-Fern	1/2 yard
1895 500-Gardenia	1895 500-Gardenia	3/8 yard

*Yardage includes binding.

BACKING: Coordinate of your choice. 5 1/2 yards

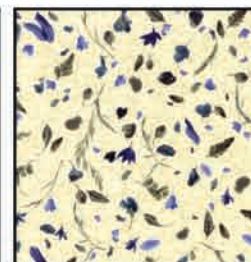
Iris Colorway



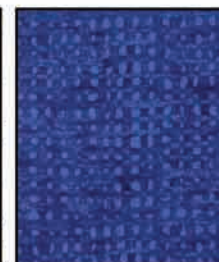
K7208 40-Iris



K7210 40-Iris



K7211 40-Iris



K7212 18-Royal



K7212 96-Olive



1895 40-Iris



1895 220-Fern



1895 500-Gardenia

Wild Rose Colorway



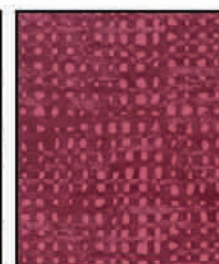
K7208 94-Wild Rose



K7210 94-Wild Rose



K7211 94-Wild Rose



K7212 212-Berry



K7212 96-Olive



1895 599-Valentine



1895 220-Fern



1895 500-Gardenia

Window Box

72" X 88-1/2"

design and pattern by Monique Dillard of Open Gate Quilts

featuring the Bouquet Memories collection by Hoffman California Fabrics

Please read through all the instructions first. Note there is a time-saving cutting guide on Page 7.

Yardage:

Fabric A - 2 1/4 yards pansy print - K7208

Fabric B - 3/8 yard cream fabric - 1895-500

Fabric C - 7/8 yard petal print - K7211

Fabric D - 3/4 yard dark fabric in pink, purple or blue - K7212

Fabric F - 1 yard dark fabric in green - K7212

Fabric G - 1/2 yard light hand-dye in pink, violet or blue - 1895

Fabric H - 1/2 yard light hand-dye in green - 1895

Fabric J - 1 5/8 yards floral stripe - K7210 **Note - Because this fabric is directional, when cutting this print, make sure to cut the first measurement in the cutting instructions first. For example, if it says :12 1/2" x 6 1/2", cut the 12 1/2" along the selvage.

5 1/2 yards backing

Cut Borders & Binding

From Fabric A, cut:

8 - 6 1/2" strips for 3rd border

From Fabric C, cut:

6 - 2" strips for first border

From Fabric D, cut:

6 - 2" strips for second border

From Fabric F, cut:

8 - 2 1/2" strips

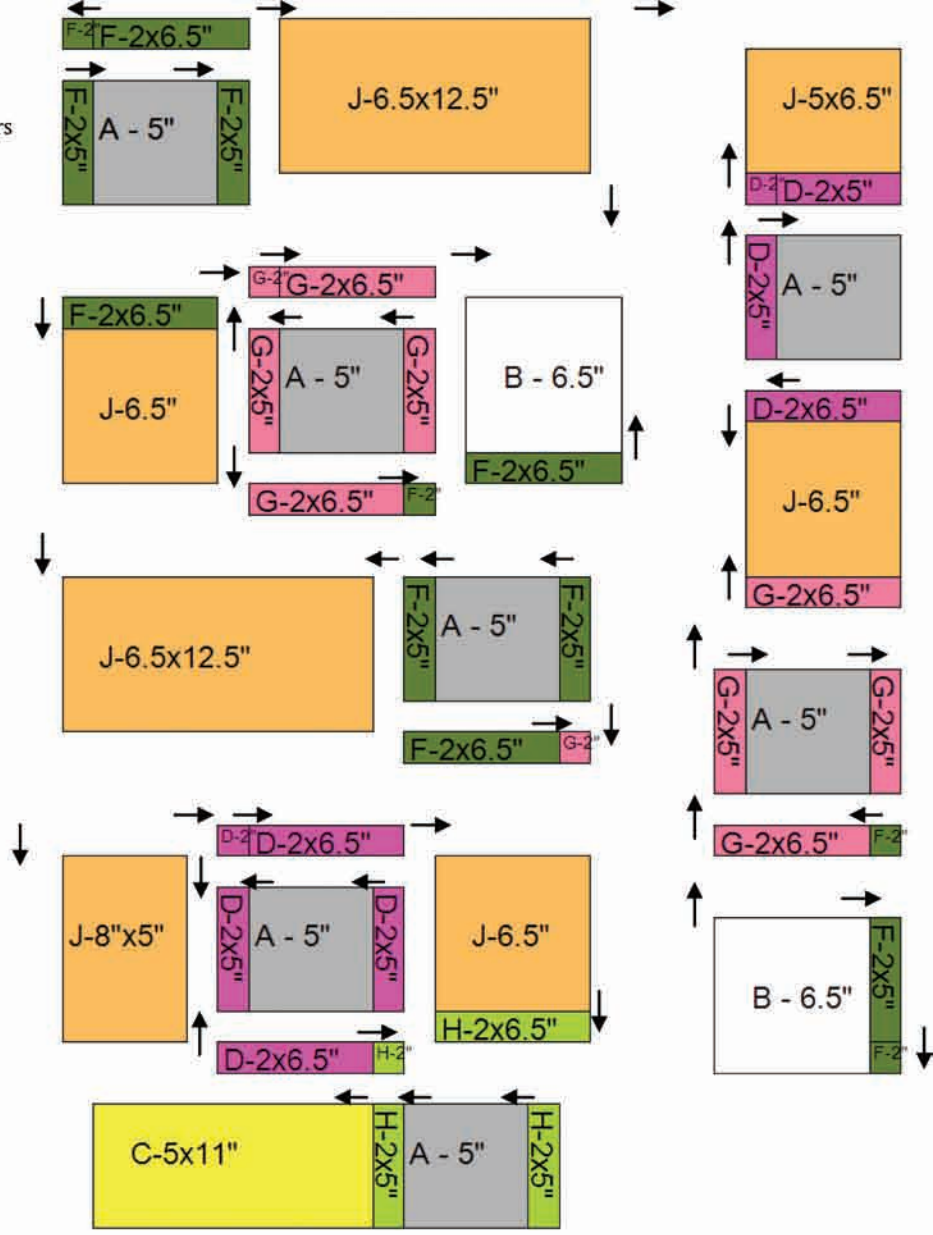
This quilt is made in 4 sections. Make each section, following the cutting and piecing instructions then put the quilt top together.

As you are cutting each fabric, make your first cut and use the leftover for the next cuts of the same fabric. Make sure that you save all the extra pieces of each fabric after cutting for the next section.

1. Starting with the **top left** corner of the quilt, sew the pieces together following the size and letters of each piece. Press in the direction of the arrows.

Cutting:

- Fabric A: 7 - 5" squares
- Fabric B: 2 - 6 1/2" squares
- Fabric C: 1 - 5" x 11" piece
- Fabric D: 2 - 2" squares
4 - 2" x 5" pieces
3 - 2" x 6 1/2" pieces
- Fabric F: 4 - 2" squares
5 - 2" x 5" pieces
4 - 2" x 6 1/2" pieces
- Fabric G: 2 - 2" squares
4 - 2" x 5" pieces
4 - 2" x 6 1/2" pieces
- Fabric H: 1 - 2" square
2 - 2" x 5" pieces
1 - 2" x 6 1/2" piece
- Fabric J: 2 - 6 1/2" x 12 1/2" piece
3 - 6 1/2" squares
1 - 5" x 6 1/2" piece
1 - 8" x 5" piece



2. Next, sew the **top right** corner together following the size and letters of each piece.

Press in the direction of the arrows.

Cutting:

Fabric A: 5 - 5" squares

1 - 2" x 5" piece

Fabric B: 1 - 6 1/2" squares

1 - 2" x 6 1/2" piece

Fabric C: 1 - 6 1/2" square

1 - 5" x 12 1/2" piece

1 - 8" x 14" piece

Fabric D: 6 - 2" squares

3 - 2" x 5" pieces

3 - 2" x 6 1/2" pieces

Fabric F: 1 - 2" square

4 - 2" x 5" pieces

3 - 2" x 6 1/2" pieces

Fabric G: 1 - 2" square

1 - 2" x 6 1/2" piece

Fabric H: 2 - 2" squares

4 - 2" x 5" pieces

4 - 2" x 6 1/2" pieces

Fabric J: 1 - 9 1/2" x 15 1/2" piece

1 - 6 1/2" x 12 1/2" piece

1 - 5" x 9 1/2" piece

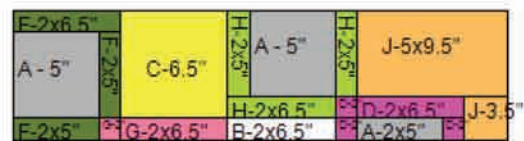
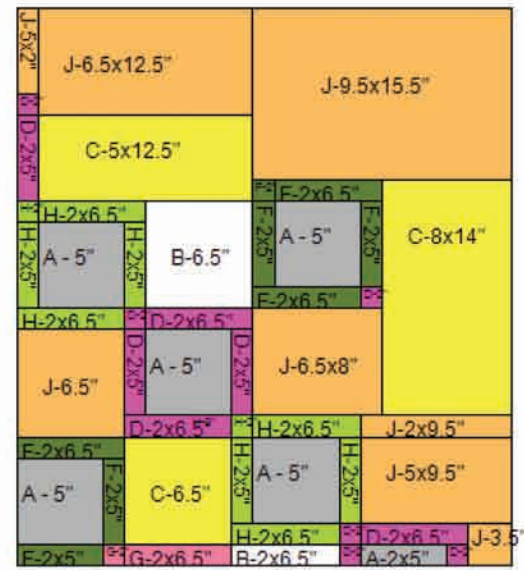
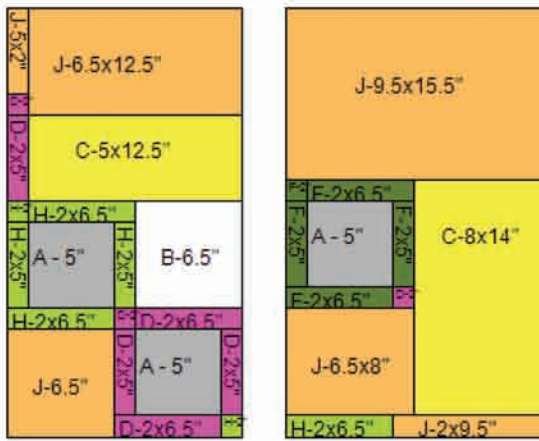
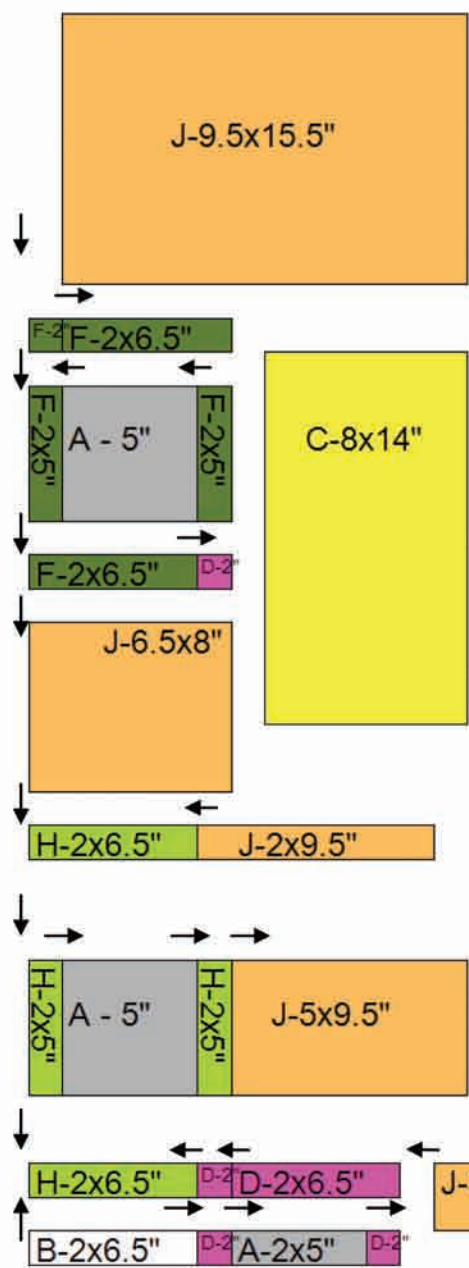
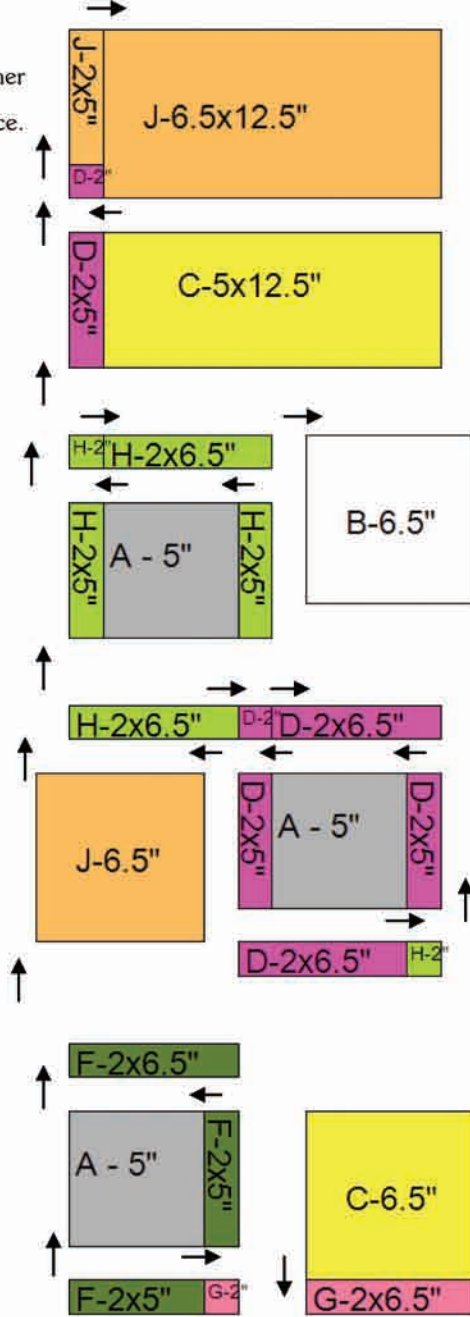
1 - 2" x 9 1/2" piece

1 - 6 1/2" x 8" piece

1 - 6 1/2" square

1 - 3 1/2" square

1 - 5" x 2" piece



3. Next, sew the **bottom left** corner together following the size and letters of each piece.

Press in the direction of the arrows.

Cutting:

Fabric A: 7 - 5" squares

Fabric B: 2 - 6 1/2" squares

Fabric C: 1 - 6 1/2" square
 1 - 5" x 15 1/2" piece
 1 - 2" x 11" piece
 1 - 2" x 5" piece

Fabric D: 3 - 2" squares
 4 - 2" x 5" pieces
 4 - 2" x 6 1/2" pieces

Fabric F: 2 - 2" square
 4 - 2" x 5" pieces
 4 - 2" x 6 1/2" pieces

Fabric G: 3 - 2" square
 3 - 2" x 5"
 2 - 2" x 6 1/2" piece

Fabric H: 2 - 2" squares
 4 - 2" x 5" pieces
 4 - 2" x 6 1/2" pieces

Fabric J: 1 - 5" x 27 1/2" piece
 1 - 5" x 15 1/2" piece
 1 - 2" x 15 1/2" piece
 1 - 6 1/2" x 12 1/2" piece
 1 - 8" square
 2 - 6 1/2" squares
 1 - 6 1/2" x 5" piece
 1 - 14" x 3 1/2" piece



4. Sew the **bottom right** corner together following the size and letters of each piece.

Press in the direction of the arrows.

Cutting:

Fabric A: 8 - 5" squares

1 - 3 1/2" x 5"

Fabric B: 1 - 6 1/2" squares

1 - 5" x 6 1/2" piece

Fabric C: 1 - 6 1/2" square

2 - 5" x 6 1/2" piece

1 - 2" x 5" piece

Fabric D: 1 - 2" squares

2 - 2" x 5" pieces

3 - 2" x 6 1/2" pieces

2 - 2" x 3 1/2" pieces

Fabric F: 3 - 2" square

4 - 2" x 5" pieces

4 - 2" x 6 1/2" pieces

Fabric G: 4 - 2" square

9 - 2" x 5"

5 - 2" x 6 1/2" piece

Fabric H: 4 - 2" squares

3 - 2" x 5" pieces

2 - 2" x 6 1/2" pieces

Fabric J: 1 - 6 1/2" x 12 1/2" piece

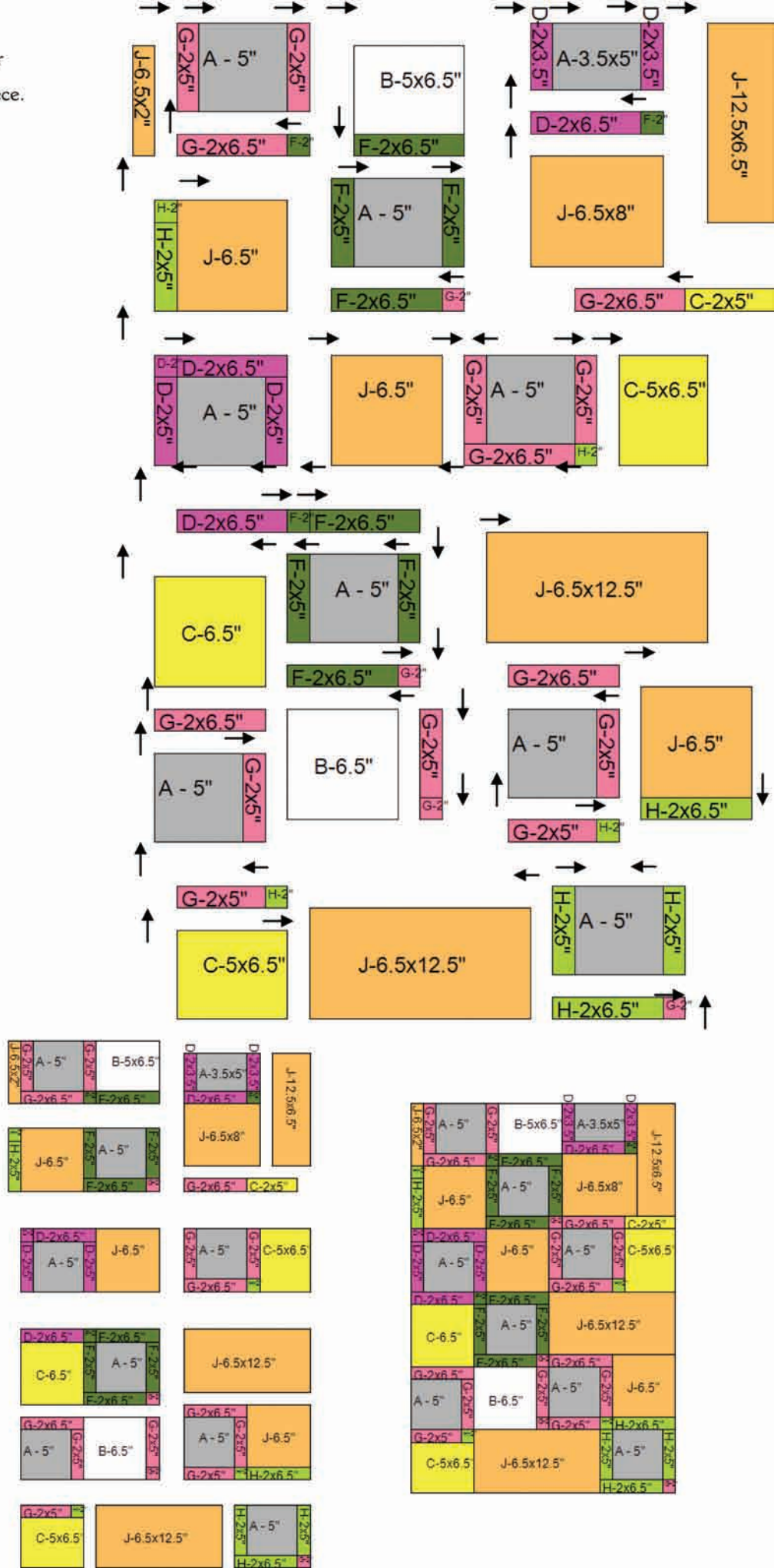
1 - 12 1/2" x 6 1/2" piece

1 - 6 1/2" x 8" piece

3 - 6 1/2" squares

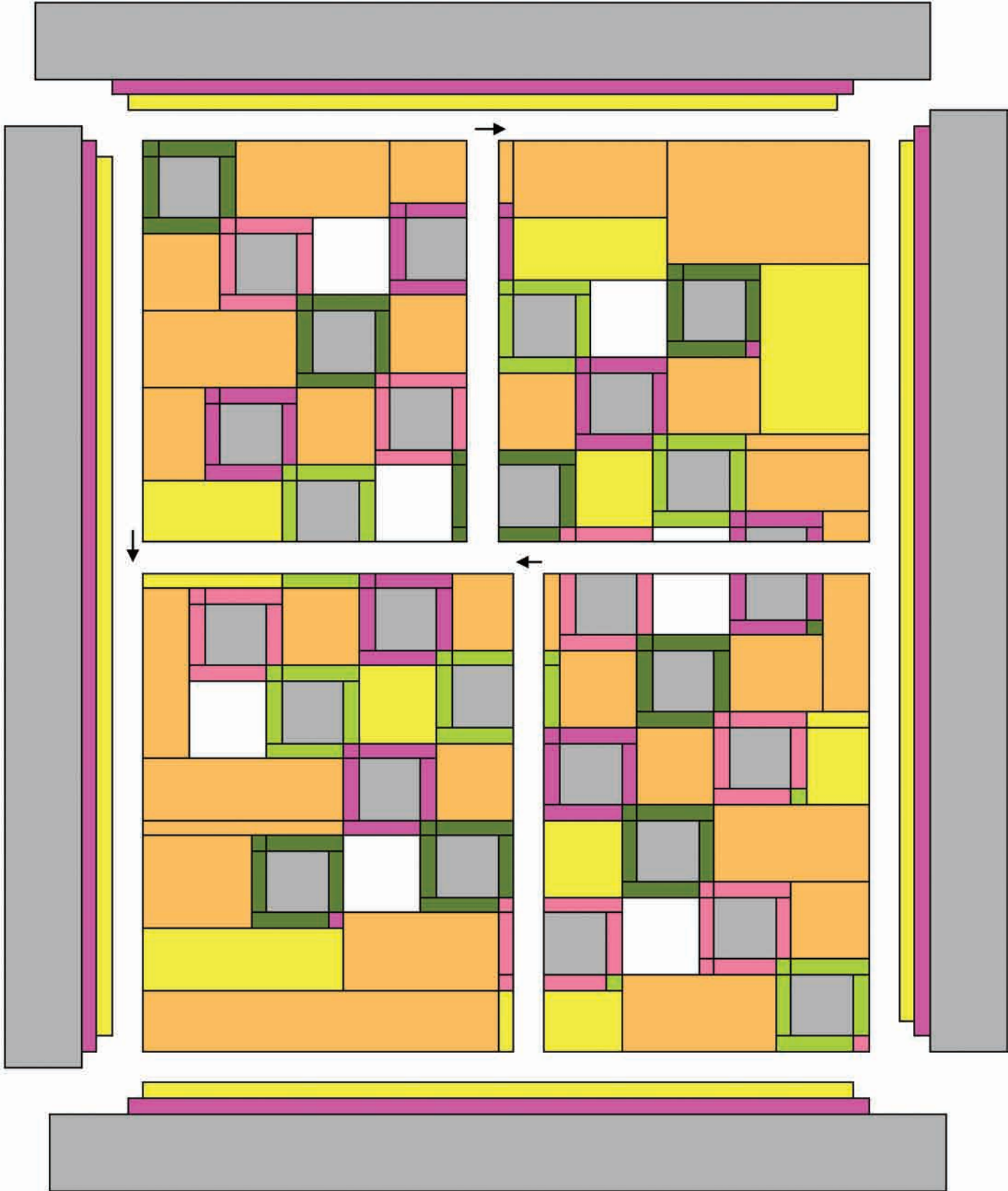
1 - 12 1/2" x 3 1/2" piece

1 - 6 1/2" x 2" piece



5. Sew the four sections together. Press in the direction of the arrows. Sew on the 3 borders.

6. Quilt, bind and enjoy!



To save a bit of time, the following is a condensed cutting guide. A suggestion, start with the largest pieces and work your way down to the smallest.

Fabric A

- 1- 2 x 5"
- 1- 3 ½ x 5"
- 27- 5" squares

Fabric B

- 1- 2 x 6 ½ "
- 1- 5 x 6 ½ "
- 6- 6 ½ " squares

Fabric C

- 2- 2 x 5"
- 1- 2 x 11"
- 2- 5 x 6 ½ "
- 1- 5 x 11"
- 1- 5 x 12 ½ "
- 1- 5 x 15 ½ "
- 3- 6 ½ " squares
- 1- 8 x 14

Fabric D

- 12- 2" squares (cut after the 13- 2 x 6 ½ ")
- 2- 2 x 3 ½ "
- 13- 2 x 5"
- 13- 2 x 6 ½ "

Fabric F

- 10- 2" squares (cut after the 15 – 2x 6 ½ ")
- 17- 2 x 5"
- 15- 2 x 6 ½ "

Fabric G

- 10- 2" squares
- 16- 2 x 5"
- 12- 2 x 6 ½ "

Fabric H

- 9- 2" squares
- 13- 2 x 5"
- 11- 2 x 6 ½ "

Fabric J

- 1- 2 x 9 ½ "
- 1- 2 x 15 ½ "
- 1- 3" square

- 1- 5x2"
- 1- 5 x 6 ½ "
- 1 5 x 9 ½ "
- 1- 5 x 15 ½ "
- 1- 5 x 27 ½ "

- 1- 6 ½ x 2"
- 1- 6 ½ x 5"
- 9- 6 ½ " squares
- 2- 6 ½ x 8"
- 6- 6 ½ " x 12 ½ "

- 1- 8" square
- 1- 8 x 5"
- 1- 9 ½ x 15 ½ "
- 1- 12 ½ x 3 ½ "
- 1- 14 x 3 ½ "