

Black, White & Currant III

by Color Principle



70" x 70"

49 West 37th Street
New York, NY 10018
Tel: 212-686-5194 fax: 212-532-3525
Toll Free: 800-294-9495
www.henryglassfabrics.com



Henry Glass & Co., Inc.



To view the entire collection and download a free pattern,
please visit our website at www.henryglassfabrics.com

Black, White & Currant III

by Color Principle



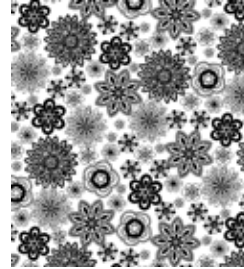
7710-98



7710-99



7711-99



7711-44



7711-88



7712-44



7712-81



7712-88



7712-99



7713-44



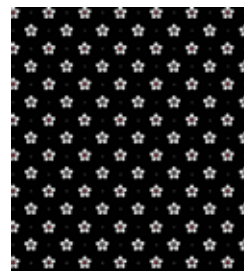
7713-99



7714-44



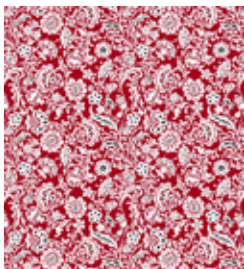
7714-88



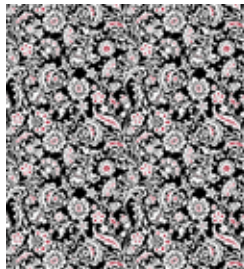
7714-99



7715-44



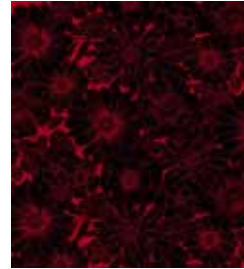
7715-88



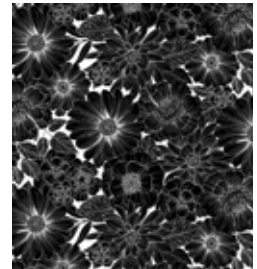
7715-99



7716-44



7716-88



7716-99

Black, White & Currant III

70" x 70" Quilt Designed by Sue Falkowski

Fabric Requirements

7710-98 Red Paisley	1 ¼ yd	Outer Border
7710-99 Black Paisley	¼ yd	Blocks
7711-44 White/Black Flowers	¼ yd	Blocks
7711-88 Red/Black Flowers	¼ yd	Blocks (HST)
7711-99 Black/ Flowers	¼ yd	Blocks
7712-44 White/Black Swirl	¼ yd	Blocks
7712-81 Red/White Swirl	¼ yd	Blocks (HST)
7712-88 Red/Black Swirl	¼ yd	Blocks (HST)
7712-99 Black Swirl	¼ yd	Blocks
7713-44 White Damask	¼ yd	Blocks
7713-99 Black Damask	¼ yd	Blocks

7714-44 White/Small Black Flowers	1 yd	Blocks (HST)
7714-88 Red/Small White Flowers	7/8 yd	Binding & Blocks (HST)
7714-99 Black/Small White Flowers	¼ yd	Blocks
7715-44 White/Black all-over flowers	¾ yd	Inner Border #1/Blocks
7715-88 Red/ White all-over Flowers	¼ yd	Blocks
7715-99 Black/Red all-over Flowers	¼ yd	Blocks
7716-44 White/Large Flowers	¼ yd	Blocks
7716-88 Red/Lg. Black Flowers	½ yd	Inner Border #2
7716-99 Black Large Flowers	¼ yd	Blocks

Note

- Please visit www.henryglassfabrics.com for any pattern updates and read through the instructions before beginning the project.
- wof = width of fabric - HST = half-square triangle
- Seam allowance is ¼"
- Before cutting border strips, measure your quilt top through the middle, both ways, to determine the exact border length. Measurements are given, however, your quilt may differ slightly in size. Press seams toward the border.

Cutting:

Black: 7710-99, 7711-99, 7712-99, 7713-99, 7714-99, 7715-99, 7716-99

From each cut:: (2) 3 ½" x wof strips, cut into:
16 - 3 ½" squares for blocks (you will have a few extra)

Red: 7711-88, 7712-81, 7712-88, 7714-88 (save remainder of 7714-88 for binding.)

From each cut: (2) 3 7/8" x wof strips, cut into:
(14) 3 7/8" squares for HST (you will have a few extra)

White: 7712-44, 7713-44, 7716-44, 7711-44

From each cut: (2) 3 1/2" x wof strips, cut into:
18 - 3 ½" squares for blocks (you will have a few extra)

7710-98 Red Paisley

(7) 5 ½" x wof strips, pieced together end to end and cut:
(2) 5 ½" x 60 ½" outer border sides
(2) 5 ½" x 70 ½" outer border top & bottom

7714-44 White/Small Black Flowers

(6) 3 7/8" x wof strips, cut into:
(54) 3 7/8" squares for HST
(2) 3 ½" x wof strips, cut into:
(18) 3 ½" squares for blocks (you will have a few extra)

7715-44 White/Black all-over Flowers

(2) 3 ½" x wof strips, cut into:
(18) 3 ½" squares for blocks
(6) 2" x wof strips, pieced together end to end and cut:
(2) 2" x 54 ½" strips for first inner border sides
(2) 2" x 57 ½" strips for first inner border top & bottom

7716-88 Red/Black Large Flowers

(6) 2" x wof strips, pieced together end to end and cut:
(2) 2" x 57 ½" strips for second inner border sides
(2) 2" x 60 ½" strips for second inner border top & bottom

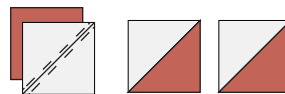
7714-88 Red/Small White Flowers

(8) 2 ½" x wof strips, pieced together end to end for binding

Assembly

Half Square Triangles (HST)

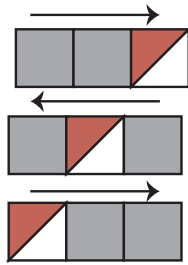
1. Draw a line from corner to corner on the wrong side of a 3 7/8" White/Small Black Flowers square.
2. With right sides together, place it on a 3 7/8" assorted red square.
3. Stitch ¼" from each side of the line.
4. Cut apart on the line and press toward the red. Trim the "ears". This will give you (2) 3 1/2" HST.



Repeat 53 times, creating a total of 108 half square triangle blocks. (HST)

Blocks

Each block is made with 3 HST blocks and (6) 3 ½" assorted squares. Sew 3 1/2 squares and HST as shown, pressing each row in different directions and then sew the rows together.



together in 6 rows of 6 blocks, pressing seams in opposite directions. Sew the rows together.

Borders

- Measure your quilt through the middle, both ways, to determine the length of the borders. Measurements are given, however, your quilt may differ slightly in size.
- Add border strips to sides of the quilt first. Press seams toward the borders. Next, add the top and bottom borders.

Add borders to the quilt

First Inner Border 7715-44 white

Add 2" x 54 1/2" border strips to each side.

Add 2" x 57 1/2" border strips to the top and bottom.

Second Inner Border 7716-88

Add 2" x 57 1/2" border strips to each side.

Add 2" x 60 1/2" strips to the top and bottom.

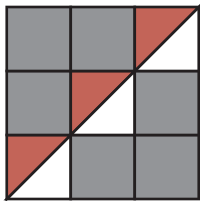
Outer Border Red Paisley 7710-98

Add 5 1/2" x 60 1/2" border strips to each side.

Add 5 1/2" x 70 1/2" border strips to the top and bottom.

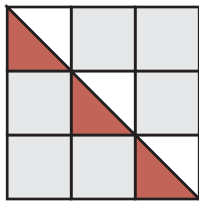
Layer, quilt and bind with 2 1/2" 7714-88 red with white flower strips

1. To achieve the subtle gradation of light to dark in the quilt,
2. **20** blocks are made with all dark 3 1/2" squares (Block **A**),
3. **12** blocks are made with all light 3 1/2" squares (Block **B**).
4. **4** blocks are made with light and dark 3 1/2" squares (Block **C**) in the placement shown. The block measures 9 1/2" unfinished. Make 36 blocks.



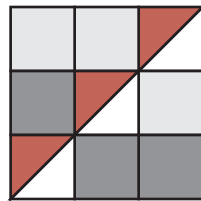
Block A

Make 20



Block B

Make 12



Block C

Make 4

Use the diagram of the quilt as a guide for block placement. Arrange and rotate your blocks on a design wall or other surface to find a pleasing arrangement. Sew the blocks

