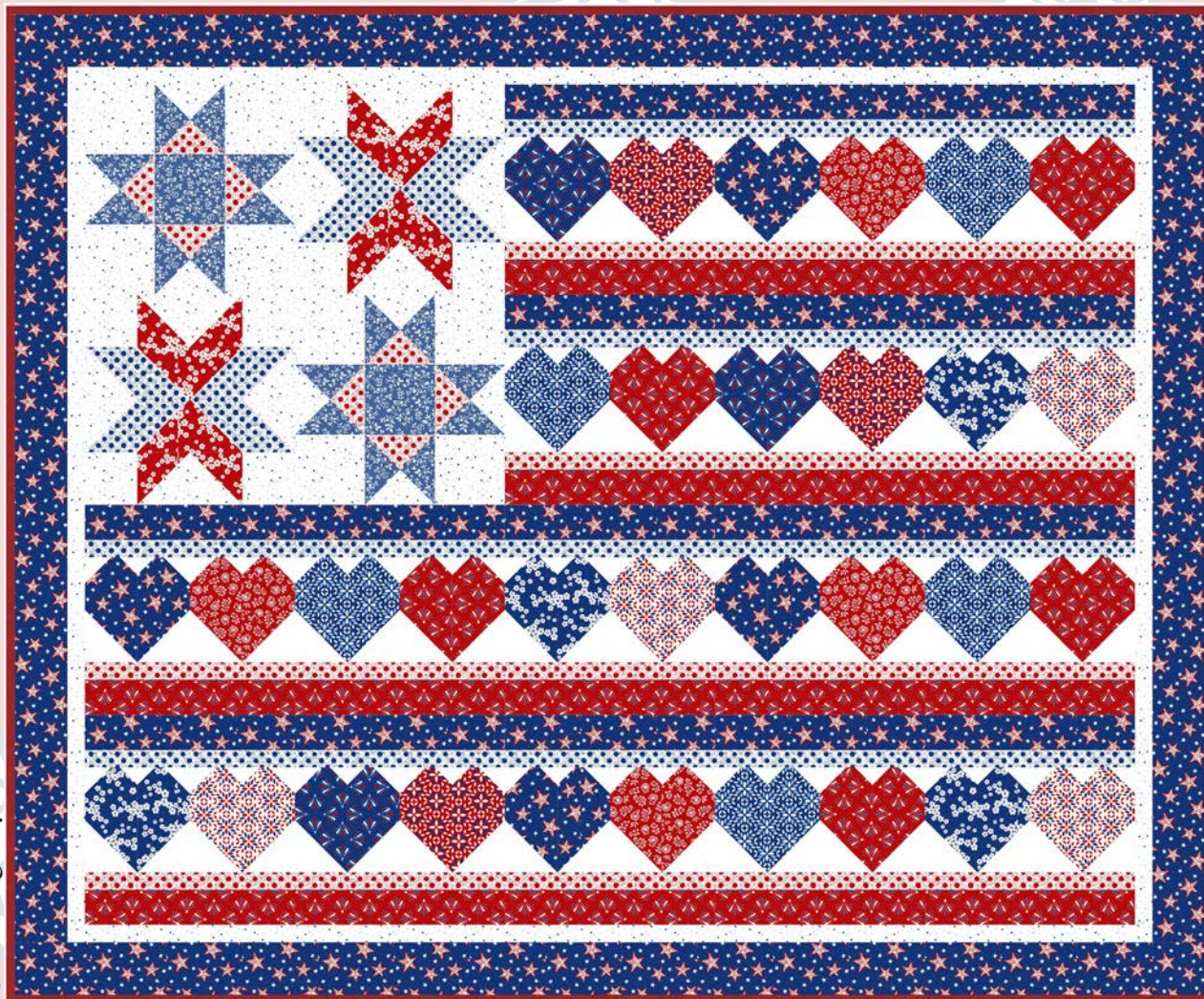




Quilt 2

ANTHEM

by Satin Moon Designs



Quilt design by Denise Russell.

Quilt size: 69" x 57"

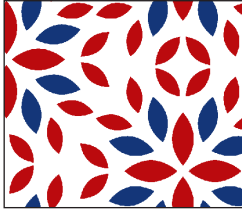
Skill Level: Advanced Beginner

Blank Quilting Corporation
49 West 37th Street ♦ New York, NY 10018
Tel: 800-294-9495 ♦ Fax: 212-679-4578
www.blankquilting.net

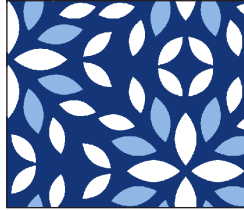
facebook

Free Project
NOT FOR RESALE

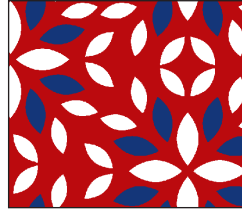
ANTHEM - Fabrics in the Collection



2480-01 Tiles
White



2480-77 Tiles
Dk. Blue



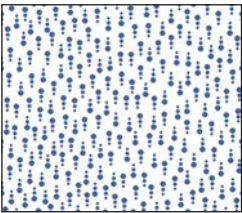
2480-88 Tiles
Red



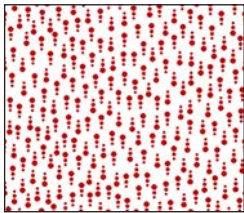
2481-76 Mini Floral
Med. Blue



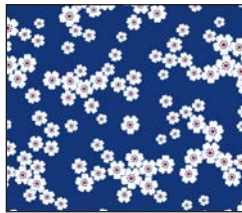
2481-88 Mini Floral
Red



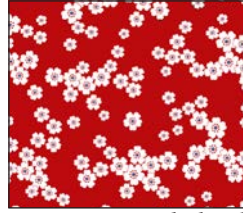
2482-07 Line Dots
White/Blue



2482-08 Line Dots
White/Red



2483-77 Spaced Floral
Dk. Blue



2483-88 Spaced Floral
Red



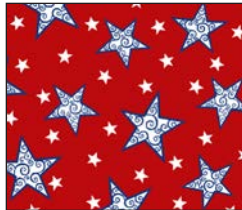
2484-07 Floral Petals
White/Blue



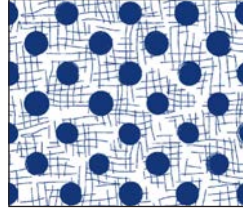
2484-88 Floral Petals
Red



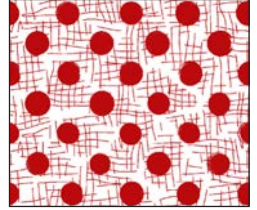
2485-77 Stars
Dk. Blue



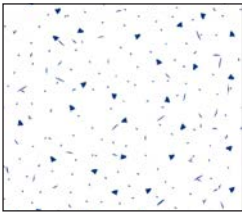
2485-88 Stars
Red



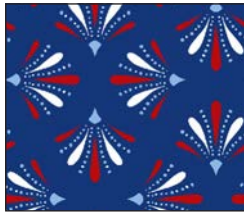
2486-07 Dots
White/Blue



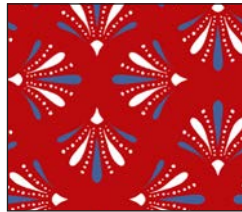
2486-08 Dots
White/Red



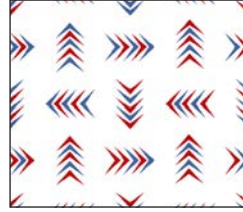
2487-07 Specks
White/Blue



2488-77 Fans
Dk. Blue



2488-88 Fans
Red



2489-01 Arrows
White

Selected fabrics from the
Eclipse Collection



3955
White



3955
Red

Materials

Yardages and cutting instructions are based on 42" of usable fabric width.

1/4 yard 2480-01 Tiles - White
1/4 yard 2480-77 Tiles - Dk. Blue
1/4 yard 2480-88 Tiles - Red
1/4 yard 2481-76 Mini Floral - Med. Blue
1/4 yard 2483-77 Spaced Floral - Dk. Blue
1/4 yard 2488-77 Fans - Dk. Blue
1/4 yard 2484-88 Floral Petals - Red
1/4 yard 2483-88 Spaced Floral - Red
1/2 yard 2486-07 Dots - White/Blue
1/2 yard 2486-08 Dots - White/Red
5/8 yard 3955 Eclipse - Red
5/8 yard 2488-88 Fans - Red
7/8 yard 2487-07 Specks - White/Blue
7/8 yard 3955 Eclipse - White
1-1/3 yards 2485-77 Stars - Dk. Blue
3-3/4 yards 2480-01 Tiles - White for backing
77" x 65" piece of Air Lite® Colour Me 100% Cotton batting

Cut Fabrics

Note: All strips are cut across the width of the fabric (WOF) from selvaige to selvaige unless otherwise indicated.

From each:

2480-01 Tiles - White

2484-88 Floral Petals - Red

2483-77 Spaced Floral - Dk. Blue

*Cut one 6-1/2" x WOF strip. Sub-cut eight 3-1/2" x 6-1/2" **N** rectangles.

From 2480-77 Tiles - Dk. Blue

*Cut one 6-1/2" x WOF strip. Sub-cut ten 3-1/2" x 6-1/2" **N** rectangles.

From each:

2488-77 Fans - Dk. Blue

2480-88 Tiles - Red

*Cut one 3-1/2" x WOF strip. Sub-cut six 3-1/2" x 6-1/2" **N** rectangles.

From 2481-76 Mini Floral - Med. Blue:

*Cut one 5-1/4" x WOF strip. Sub-cut:

- Four 5-1/4" squares; cut twice diagonally (**B** triangles)
- Two 4-1/2" **E** squares

From 2483-88 Spaced Floral - Red:

*Cut one 7-1/4" x WOF strip. Sub-cut:

- One 7-1/4" square; cut twice diagonally (**I** triangles)
- Eight 3-1/2" **H** squares

From 2486-07 Dots - White/Blue:

*Cut one 7-1/4" x WOF strip. Sub-cut:

- One 7-1/4" square; cut twice diagonally (**K** triangles)
- Eight 3-1/2" **J** squares

*Five 1-1/2" x WOF strips for sashing.

From 2486-08 Dots - White/Red:

*Cut one 5-1/4" x WOF strip. Sub-cut two 5-1/4" squares; cut twice diagonally (**D** triangles).

*Five 1-1/2" x WOF strips for sashing.

From 3955 Eclipse - Red:

*Cut seven 2-1/2" x WOF strips for binding.

From 2488-88 Fans - Red:

*Cut one 6-1/2" x WOF strip. Sub-cut ten 3-1/2" x 6-1/2" **N** rectangles.

*Cut five 2-1/2" x WOF strips for sashing.

From 2487-07 Specks - White/Blue:

*Cut one 4-1/2" x WOF strip. Sub-cut eight 4-1/2" **A** squares.

*Cut one 5-1/4" x WOF strip. Sub-cut:

- Two 5-1/4" squares; cut twice diagonally (**C** triangles)

- Eight 3-1/2" **F** squares

*Cut one 6-1/2" x WOF strip. Sub-cut eight 3-1/2" x 6-1/2" **G** rectangles.

*Cut six 1-1/2" x WOF strips for border 1.

From 3955 Eclipse - White:

*Cut two 1-1/4" x WOF strips. Sub-cut sixty-four 1-1/4" **M** squares.

*Cut three 1-1/2" x WOF strips. Sub-cut sixty-four 1-1/2" **L** squares.

*Cut six 3-1/2" x WOF strips. Sub-cut sixty-four 3-1/2" **O** squares.

ANTHEM - Quilt 2

From 2485-77 Stars - Dk. Blue:

*Cut five 2-1/2" x WOF strips for sashing.

*Cut one 6-1/2" x WOF strip. Sub-cut eight 3-1/2" x 6-1/2" N rectangles.

*Cut six 3-1/2" x WOF strips for border 2.

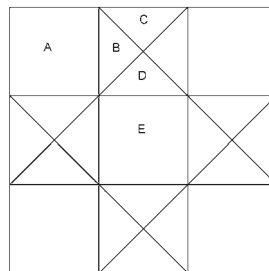
Assemble Blocks

Notes:

- Measurements include 1/4" seam allowances. Sew with right sides together unless otherwise stated. If no direction is specified, press the seam toward the darker fabric.
- The number of blocks varies by the color combination (refer to the quilt photo), so note the difference in unit numbers constructed. The block colorways are listed on Table 1 below. **Group fabrics by block for ease of construction.**

Block	Main and Accent Colors	Quantity
1	Main: 2487-07 Specks – White/Blue Accents: 2481-76 Mini Floral - Med. Blue 2486-08 Dots - White/Red	2
2	Main: 2487-07 Specks – White/Blue Accents: 2483-88 Spaced Floral – Red 2486-07 Dots - White/Blue	2
3	Main: 3955 Eclipse – White Accents: 2488-77 Fans - Dk. Blue 2480-88 Tiles - Red	3
4	Main: 3955 Eclipse – White Accents: 2485-77 Stars - Dk. Blue 2484-88 Floral Petals – Red	4
5	Main: 3955 Eclipse – White Accents: 2480-77 Tiles - Dk. Blue 2488-88 Fans - Red	5
6	Main: 3955 Eclipse – White Accents: 2483-77 Spaced Floral - Dk. Blue 2480-01 Tiles - White	4

Table 1. Block colorways.



Block 1 Diagram

1. Sew a 2487-07 Specks - White/Blue **C** triangle to a 2481-76 Mini Floral - Med. Blue **B** triangle. Press the seam toward the dark fabric. Sew another Med. Blue **B** triangle to a 2486-08 Dots - White/Red **D** triangle. Press as before. Sew the two units together to make a 4-1/2" hourglass unit. Press the seams open. Repeat to make eight units. Sew one 2487-07 Specks - White/Blue **A** square to opposite sides of one hourglass unit (*figure 1, next page*). Press the seams away from the center. Repeat to make four rows. There are four units left.

ANTHEM - Quilt 2



Figure 1 – Make 4 rows.

2. Sew one Step 1 unit to opposite sides of a 2481-76 Mini Floral - Med. Blue **E** square. Press the seams toward the center. Repeat to make two center rows. Sew a Step 1 row to the top and one to the bottom of the center rows to make two 12-1/2" blocks (figure 2). Press the seams open.

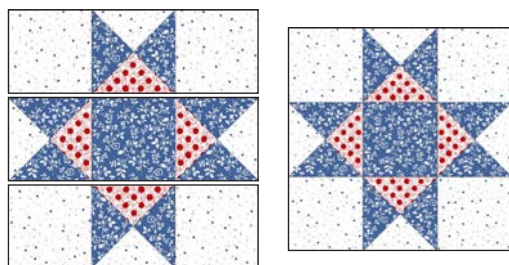
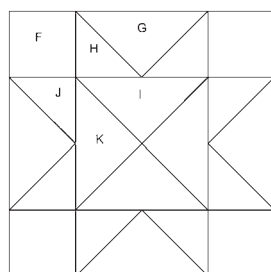


Figure 2 – Make 2.



Block 2 Diagram

3. Sew a 2483-88 Spaced Floral – Red **I** triangle to a 2486-07 Dots - White/Blue **K** triangle. Press the seam toward the dark fabric. Repeat to make four units. Sew the units two by two to make a 6-1/2" hourglass unit (figure 3). Press the seams open. Repeat to make another unit.

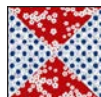


Figure 3 – Make 2.

4. Draw a diagonal line on the wrong side of the 2483-88 Spaced Floral – Red **H** squares. With right sides together, layer a marked **H** square on the left short end of a 2487-07 Specks - White/Blue **G** rectangle and stitch on the drawn line. Trim 1/4" away from the

seam line and press open. In the same manner, stitch another **H** square to the opposite end of the same rectangle. Repeat to make four 3-1/2" x 6-1/2" flying-geese units.

Repeat this step with the 2486-07 Dots - White/Blue **J** squares and the remaining Specks White/Blue **G** rectangles to make four 3-1/2" x 6-1/2" flying geese (figure 4).



Unit W Unit X
Figure 4 – Make 4 of each.

5. Sew one Step 4 X unit to opposite sides of the Step 3 units (figure 5) to make two center rows. Press the seams toward the center.

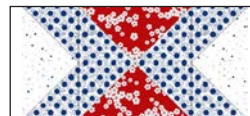


Figure 5 – Make 2.

6. Sew a 2487-07 Specks - White/Blue **F** square to opposite sides of the Step 4 W unit. Press the seams away from the center. Repeat to make four rows. Sew one row to the top and one to the bottom of the Step 5 center rows to make two 12-1/2" blocks (figure 6). Press the seams toward the center.

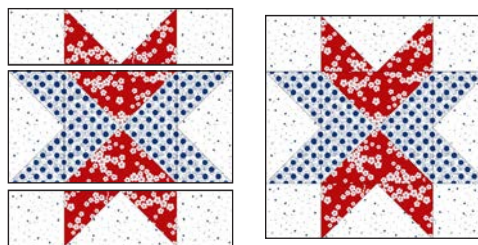


Figure 6 – Make 2.

7. Sew one Step 2 and one Step 6 blocks together to make a strip. Press the seams in one direction. Noting block placement, make another strip. Sew the strips together to make a 24-1/2" x 24-1/2" block (figure 7, next page). Press the seam open.

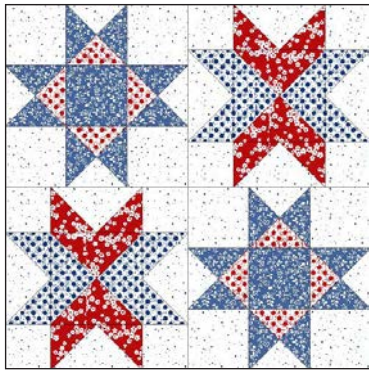
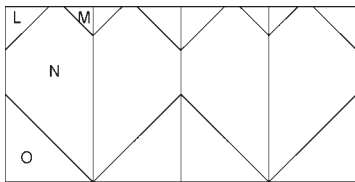


Figure 7



Blocks 3 - 6 Diagram. Block 3 depicted below.

Note: Divide the **N** rectangles of each fabric into two groups – left and right sides of the heart – as the White squares will be stitched in different positions for each group.

8. Draw a diagonal line on the wrong side of the 3955 Eclipse – White **L**, **M**, and **O** squares. Choose the rectangles from the “left side group” of one fabric. With right sides together, place one marked **L** square on the top left corner of an **N** rectangle and stitch on the drawn line. Place an **M** square on the top right corner of the same rectangle and stitch as before. Noting stitching direction, place and sew an **O** square on the bottom of the rectangle. Trim seam allowances to 1/4” and press open. Repeat with the **N** rectangles from the ‘right side group,’ this time stitching the **L** squares to the top right corner, the **M** squares to the top left corner, and the **O** square to the bottom of the rectangle but with the stitching line going in another direction. Sew the left and right sides of the heart together and press the seams open (*figure 8*). Make thirty-two assorted hearts.

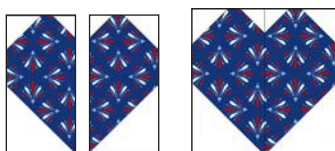


Figure 8 – Make 32 assorted.

9. Referring to the quilt photo and Table 1, sew the Step 8 blue and red hearts together to make sixteen 6-1/2” x 12-1/2” blocks (*figure 9*). Press the seams open.

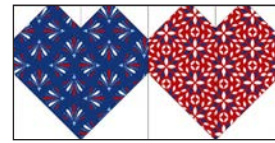


Figure 9 – Make 16 assorted.

Assemble Quilt Top

10. Join the five 2-1/2” 2485-77 Stars – Dk. Blue strips together end to end using diagonal seams. From this long strip, cut two 36-1/2” lengths and two 60-1/2” lengths. Similarly, sew and cut the five 2-1/2” 2488-88 Fans – Red strips. Set aside.

11. Repeat Step 11 with the five 1-1/2” 2486-07 Dots – White/Blue and 2486-08 Dots – White/Red strips.

12. Refer to the quilt photo for block placement as you lay out two rows of three blocks each. Sew the blocks together in each row and press the seams open. Sew together the 2-1/2” x 36-1/2” Stars – Dk. Blue strips and the 1-1/2” x 36-1/2” 2486-07 Dots – White/Blue strips. Repeat to make another set. Sew one set to the top of each block row. Repeat with the 2-1/2” x 36-1/2” Fans – Red strips and the 1-1/2” x 36-1/2” 2486-08 Dots – White/Red strips, and sew the strip set to the bottom of each block row. Press the seams away from the center.

13. Repeat Step 12 with two rows of five blocks each, the 2-1/2” x 60-1/2” Stars – Dk. Blue and Fans – Red strips, and the 1-1/2” x 60-1/2” Dots – White/Blue and Dots – White/Red strips.

14. Sew the rows together and press the seams in one direction.

15. For border 1, join the six 1-1/2” 2487-07 Specks – White/Blue strips together end to end using diagonal seams. Measure the vertical length of the quilt top through the center and cut two border strips that length. Sew one strip to each side of the quilt top and

ANTHEM - Quilt 2

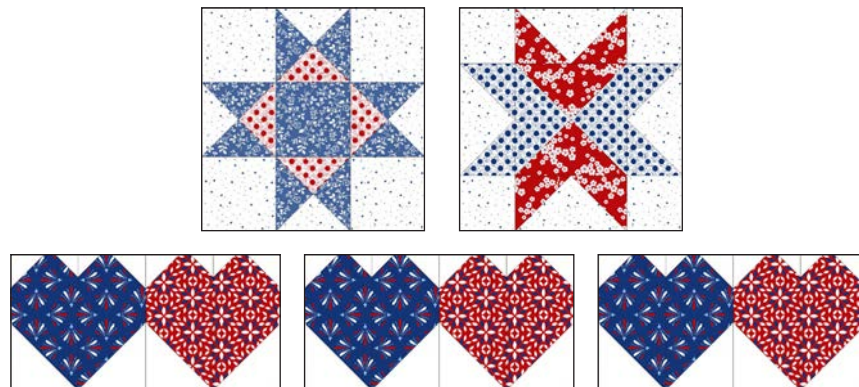
press the seams toward the border strips. Measure the width of the quilt top through the center. Cut two border strips that length and sew one to the top and one to the bottom. Press the seams toward the borders.

16. Repeat Step 15 with the six 3-1/2" 2485-77 Stars - Dk. Blue strips to make and add border 2.

Finishing

17. Create a sandwich with the batting between the quilt top and the backing. Pin or baste layers together, mark quilting design, and quilt by hand or machine. When quilting is complete, remove pins or basting, and trim batting and backing even with raw edges of the quilt top.

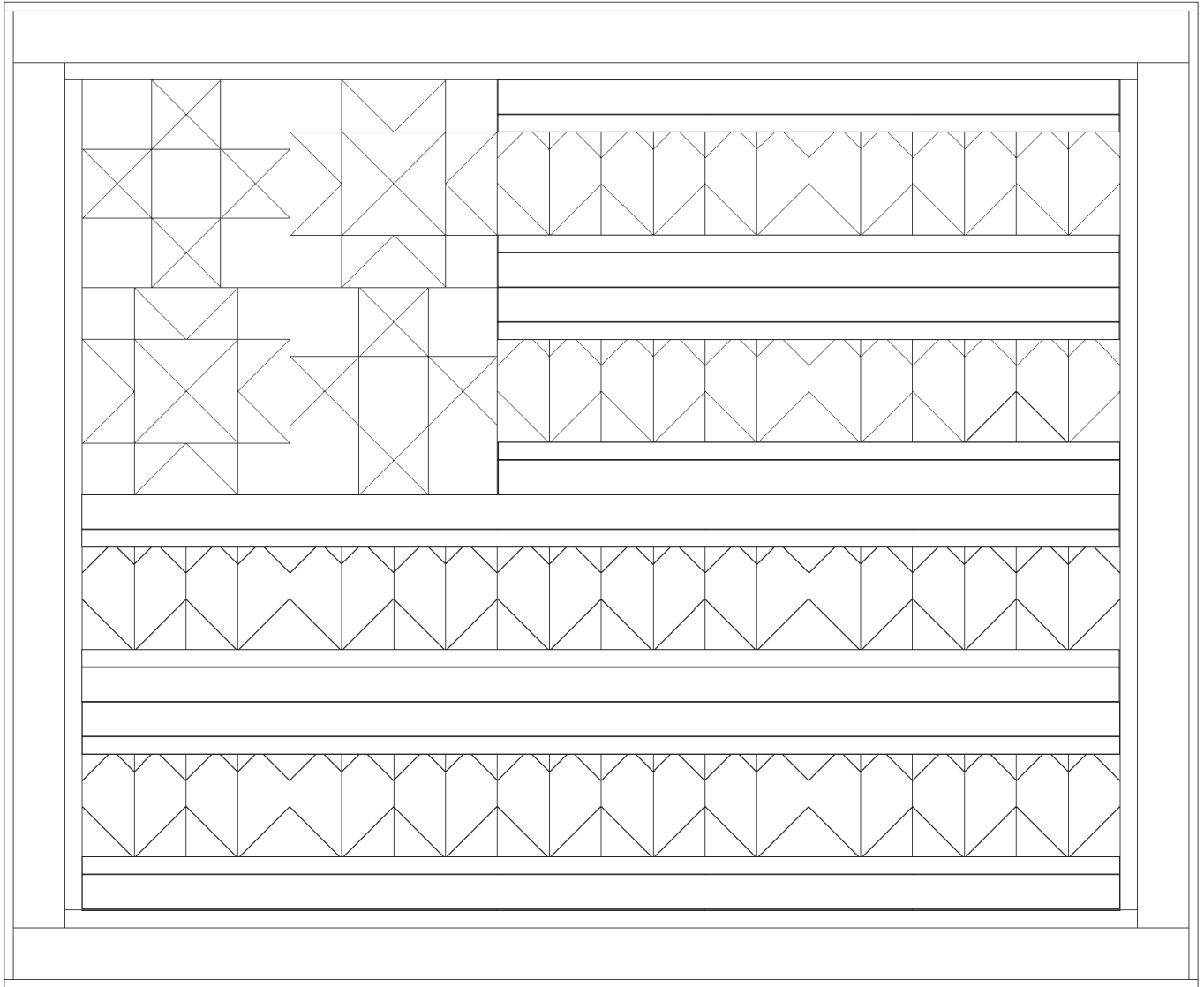
18. Join the seven 2-1/2" 3955 Eclipse – Red binding strips together end to end using a diagonal seam to make one long strip. Fold in half lengthwise and press. Sew binding to the edges of the quilt, mitering corners, and overlapping ends. Fold binding to the back of the quilt and stitch it in place by hand to finish.



©2022 Blank Quilting Corporation

Every effort has been made to ensure that all projects are error free. All the information is presented in good faith; however, no warranty can be given nor results guaranteed as we have no control over the execution of instructions. Therefore, we assume no responsibility for the use of this information or damages that may occur as a result. When errors are brought to our attention, we make every effort to correct and post a revision as soon as possible. Please make sure to check www.blankquilting.net for pattern updates prior to starting the project. We also recommend that you test the project prior to cutting for kits. Finally, all free projects are intended to remain free to you and are not for resale.

ANTHEM - Quilt 2



Quilt Diagram