

# Forest Family

Quilt Design by Cyndi Hershey



Quilt size: approximately 55" x 64"

Featuring fabrics from Forest Family  
by Deane Beesley Designs Inc. for P&B Textiles



P&B Textiles • pbtex.com • 800-351-9087 • 208 Clock Tower Square, Portsmouth, RI 02871

# Forest Family

Fabric collection by Deane Beesley Designs Inc. for P&B Textiles

Quilt design by Cyndi Hershey

Skill level: Advanced Beginner • Finished Quilt Size: approximately 55" x 64"

## Quilt Yardages:

Fabric A: <b>FFAM 4776 PA</b> .....	1 panel
Fabric B: <b>FFAM 4777 MU</b> .....	1/2 yard
Fabric C: <b>FFAM 4778 MU</b> .....	1 1/2 yards
Fabric D: <b>FFAM 4781 LY</b> .....	5/8 yard
Fabric E: <b>FFAM 4781 R</b> .....	1 yard
Fabric F: <b>SUED 300 LZ</b> .....	1 1/3 yards
Backing: <b>FFAM 4777 MU suggested</b> .....	3 1/2 yards
Batting: .....	63" x 72"

## Cutting Instructions:

Please read all instructions carefully before beginning. Strips are cut across the width of fabric (perpendicular to selvages) unless otherwise stated. All seams are sewn with a 1/4" seam unless otherwise stated. Label all pieces.

### From Fabric A:

1. Cut five 12 1/2" blocks centering design within each one.

### From Fabric B:

1. Cut one 5 1/2" strip; subcut four 5 1/2" squares. (Block B)
2. Cut one 8 1/2" strip; subcut four 8 1/2" squares. (Block A)

### From Fabric C:

1. Cut four 8" repeats from the *length of the fabric* (LOF). From these strips, cut two 8" x 38 1/2" strips and two 8" x 47 1/2" strips. (Outer Border)

### From Fabric D:

1. Cut two 1 1/8" strips. (Strip Set #3/Block B)
2. Cut one 1 1/8" strip. (Strip Set #4/ Block B)
3. Cut four 1 1/4" strips; subcut four 1 1/4" x 36 1/2" strips. (Horizontal Sashing)
4. Cut four 1 1/2" strips. (Strip Set #1/Block A)
5. Cut two 1 1/2" strips. (Strip Set #2/Block A)

### From Fabric E:

1. Cut two 1 1/8" strips. (Strip Set #3/Block B)
2. Cut one 1 1/8" strip. (Strip Set #4/ Block B)
3. Cut four 1 1/2" strips. (Strip Set #1/Block A)
4. Cut two 1 1/2" strips. (Strip Set #2/Block A)
5. Cut one 1 1/2" strip; subcut eight 1 1/2" squares. (Border Corner Squares)
6. Cut seven 2 1/2" strips. (Binding)

### From Fabric F:

1. Cut five 1 1/2" strips. Sew strips together end to end with diagonal seams. Press seams open. From this pieced strip, cut two 1 1/2" x 36 1/2" strips and two 1 1/2" x 45 1/2" strips. (1st Border)

2. Cut seven 1 1/2" strips. Sew strips together end to end with diagonal seams. Press seams open. From this pieced strip, cut two 1 1/2" x 55 1/2" strips and two 1 1/2" x 62 1/2" strips. (3rd Border)
3. Cut two 3" strips; subcut sixteen 3" squares. (Block B)
4. Cut two 3 1/2" strips; subcut two 3 1/2" x 36 1/2" strips. (Horizontal Sashing)
5. Cut two 4 1/2" strips; subcut sixteen 4 1/2" squares. (Block A)

## Piecing Instructions:

### Block A

1. Strip Set #1: Sew one 1 1/2" D strip with one 1 1/2" E strip along the long sides. Press toward E. Repeat to make four strip sets. Cut sets into sixteen 8 1/2" segments. (Figure 1)



Figure 1 Make 16.  
2 1/2" x 8 1/2"  
unfinished.

2. Strip Set #2: Sew one 1 1/2" D strip with one 1 1/2" E strip along the long sides. Press toward E. Repeat to make two strip sets. Cut sets into thirty-two 1 1/2" segments. (Figure 2)



Figure 2 Make 32.  
1 1/2" x 2 1/2"  
unfinished.

3. Sew two SS#2 segments together into a four-patch unit. Press seam open or to one side. Repeat to make sixteen units. (Figure 3)



Figure 3 Make 16.  
2 1/2" x 2 1/2"  
unfinished.

4. Draw a diagonal line on the back side of each 4 1/2" F square. With right sides together, place one marked F square in one corner of one 8 1/2" B square. Sew on drawn line and trim seam to 1/4". Press toward resulting triangle. Repeat in opposite corner of B square. Repeat for remaining corners of B square. Repeat to make four block center units. (Figure 4)

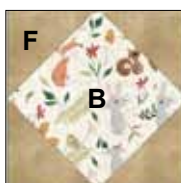


Figure 4 Make 4.  
8 1/2" x 8 1/2"  
unfinished.

- Sew one SS#1 segment and two SS#2 segments together into a row. Press toward SS#1. Repeat.
- Sew one SS#1 segment to both sides of one block center unit to create a row. Press toward SS#1.
- Sew Step 5 and Step 6 rows alternately together to complete one Block A; press. Repeat to make four blocks. (Figure 5)



Figure 5 **Make 4.**  
12 1/2" x 12 1/2" unfinished.

### Block B

- Repeat Block A steps using 1 1/8" D and E strips, 5 1/2" B squares and 3" F squares. (Figure 6)



Figure 6 **Make 4.**  
8" x 8" unfinished.

### Quilt Assembly: (Refer to the Quilt Diagram)

- Sew one 1 1/4" x 36 1/2" D strip to both sides of one 3 1/2" x 36 1/2" F strip. Press toward D. Repeat to make two horizontal sashing units. (Figure 7)



Figure 7 **Make 2.** 5" x 36 1/2" unfinished.

- Sew two 12 1/2" A squares alternately with one Block A into a row. Press toward A. Repeat to make two rows.
- Sew two Block A alternately with one 12 1/2" A square into a row. Press toward A.
- Sew rows alternately together inserting one horizontal sashing unit between each row. Press toward the sashing units.
- Sew one 1 1/2" x 45 1/2" F strip to both sides of quilt center. Press toward F. Sew one 1 1/2" E square to both ends of both 1 1/2" x 36 1/2" F strips. Press toward F. Sew one pieced strip to the top and bottom of the quilt center. Press toward F.
- Sew one 8" x 47 1/2" C strip to both sides of the quilt. Press toward C. Sew one Block B to both ends of one 8" x 38 1/2" C strip. Press toward C. Sew one pieced strip to the top and bottom of the quilt. Press toward C.
- Sew one 1 1/2" x 62 1/2" F strip to both sides of the quilt. Press toward F. Sew one 1 1/2" E square to both ends of both 1 1/2" x 55 1/2" F strips. Press toward F. Sew one pieced strip to the top and bottom of the quilt. Press toward F.

### Finishing:

- Prepare backing using two widths with horizontal seam/s. Press seams open. Trim backing to 63" x 72".
- Layer quilt, batting, and backing. Baste layers together.
- Quilt as desired.
- Trim layers even with quilt top.
- Join seven 2 1/2" E binding strips with diagonal seams. Press seams open. Attach binding using your favorite method.
- Make a label and sew to the back of the quilt.





Quilt Diagram

# Forest Family

Fabric Collection by Deane Beesley  
Designs Inc. for P&B Textiles



FFAM 4776 PA\*



FFAM 4777 MU\*



FFAM 4777 Y



FFAM 4778 MU\*



FFAM 4783 J



FFAM 4779 MU



FFAM 4780 K



FFAM 4780 O



FFAM 4780 S



FFAM 4781 LS



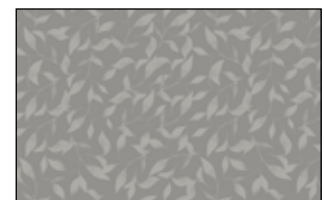
FFAM 4781 LY\*



FFAM 4781 R\*



FFAM 4782 G



FFAM 4782 S



SUED 300 LZ\*



\*Fabrics used in quilt  
†Backing